

Company

TERRA EP

Well

RU 523-7

Field

RULISON

County

GARFIELD

State

COLORADO

Location:

API # : 05-045-23129-00

Other Services

QtrQtr: SENW

LAT . 39.456907

LOG. -107.819746

SEC 7

TWP 7S

RGE 93W

Permanent Datum

G.L.

Elevation

7339'

Log Measured From

K.B.

Elevation

Ft Above PD 24.0'

Drilling Measured From

K.B.

Elevation

G.L. 7339'

Date	08-08-2016						
Run Number	ONE						
Depth Driller	9660'						
Present Depth Driller	9621'						
Depth Logger	9620'						
Bottom Logged Interval	9620'						
Top Log Interval	SURFACE						
Fluid Level	FULL						
Type Fluid	WATER						
Max. Recorded Temp.	184.5 ° F						
Estimated Cement Top	4330'						
Equipment Number	216						
Location	GRAND JCT.						
Recorded By	MCBROOM						
Witnessed By	MR. BROWN			MR. OAKS			
Run Number	Borehole Record			Casing Record			
	Bit	From	To	Size	Weight	From	To
				4.50"	11.6#	SURFACE	T.D.

<<< Fold Here >>>

All interpretations are opinions based on inferences from electrical or other measurements and we cannot and do not guarantee the accuracy or correctness of any interpretation, and we shall not, except in the case of gross or willful negligence on our part, be liable or responsible for any loss, costs, damages, or expenses incurred or sustained by anyone resulting from any interpretation made by any of our officers, agents or employees. These interpretations are also subject to our general terms and conditions set out in our current Price Schedule.

WARRIOR 7.0 SOFTWARE - Comments

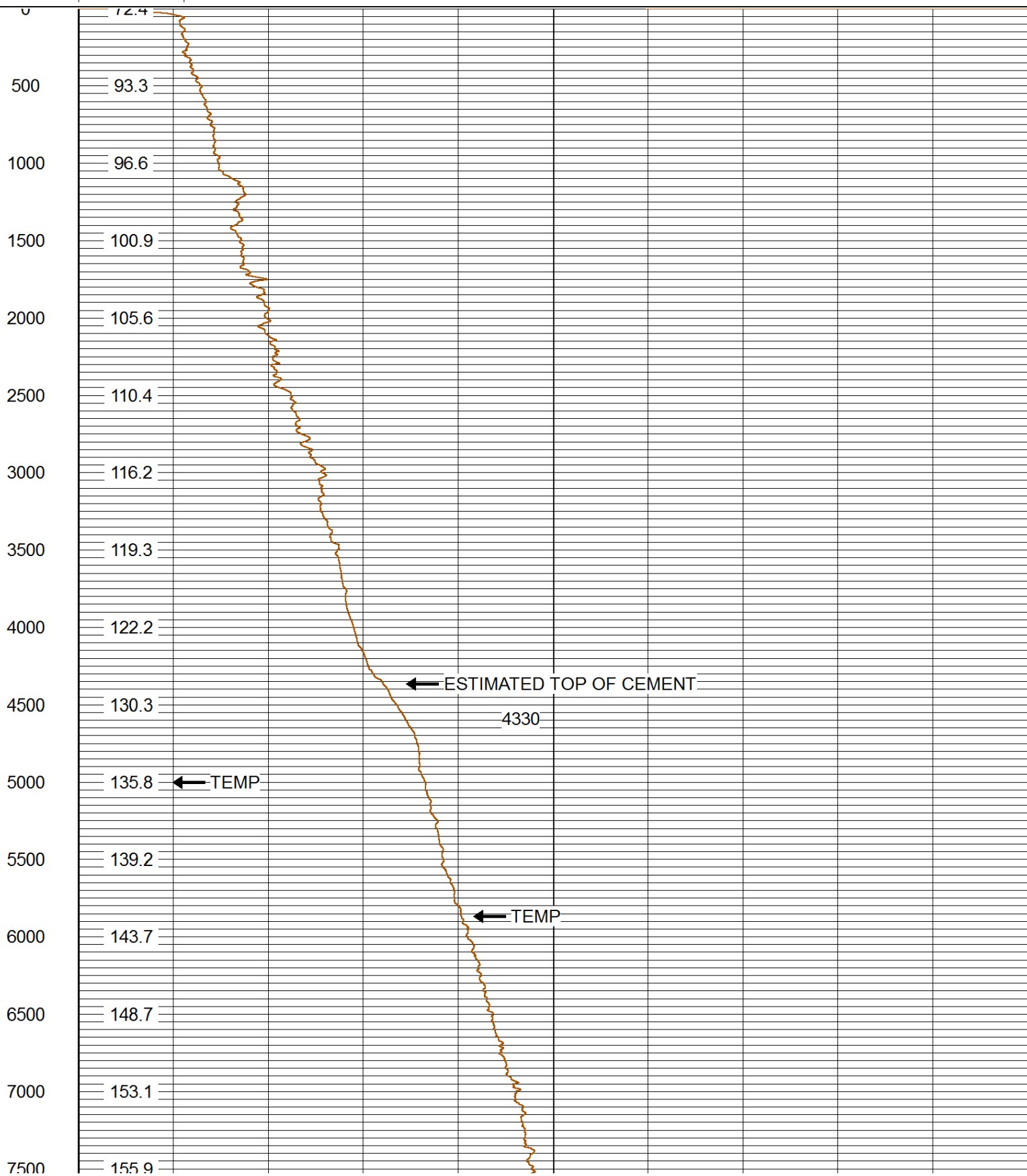
NOTE; THERE WAS NO LOG FOR DEPTH CONTROL.

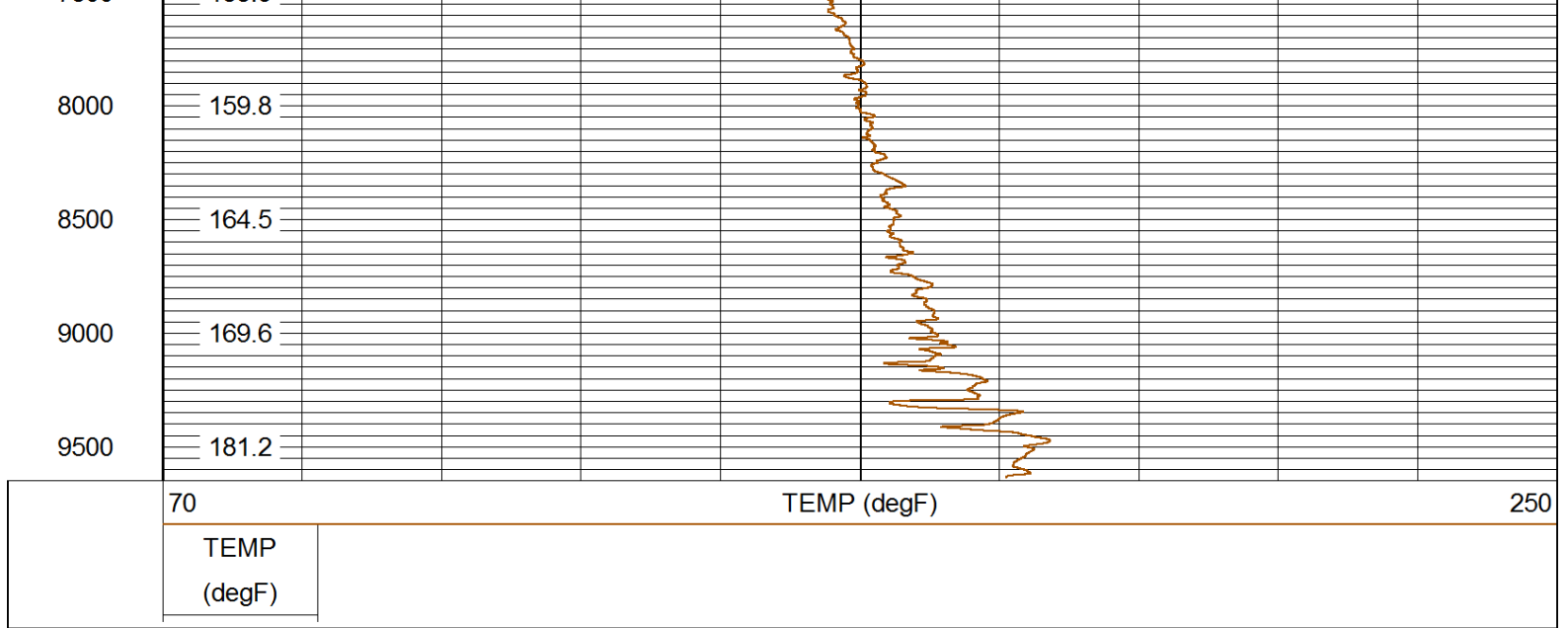
SCALE MAIN PASS 5"= 100'.


NOTE; SHORT JOINT AT 5536' TO 5558'.

Database File: 08082016_terraep{ _ru 523-7.db
 Dataset Pathname: mainpass/pass1
 Presentation Format: rmtemp_q
 Dataset Creation: Mon Aug 08 18:53:06 2016 by Log SCH 120430
 Charted by: Depth in Feet scaled 1:10000

70	TEMP (degF)		250
TEMP (degF)			





	Company	TERRA EP
	Well	RU 523-7
	Field	RULISON
	County	GARFIELD
	State	COLORADO