

WELLBORE DIAGRAM: After P&A operations

Company: Ward Petroleum

Lease:

Location: SESE, 30, 1S, 66 W, 6TH PM

Well No.: AMEND #1

County: ADAMS

API: 05-001-07215

Field: WATTENBERG

State: COLORADO

WELLHEAD:

Surface Casing

Size: 8-5/8"

Wght: 23#

Type:

Depth: 210'

Csg ID:

Csg Drift:

TOC: SURFACE

Hole Size: 12-1/4"

Open Hole

Size: 7-7/8"

Wght:

Type:

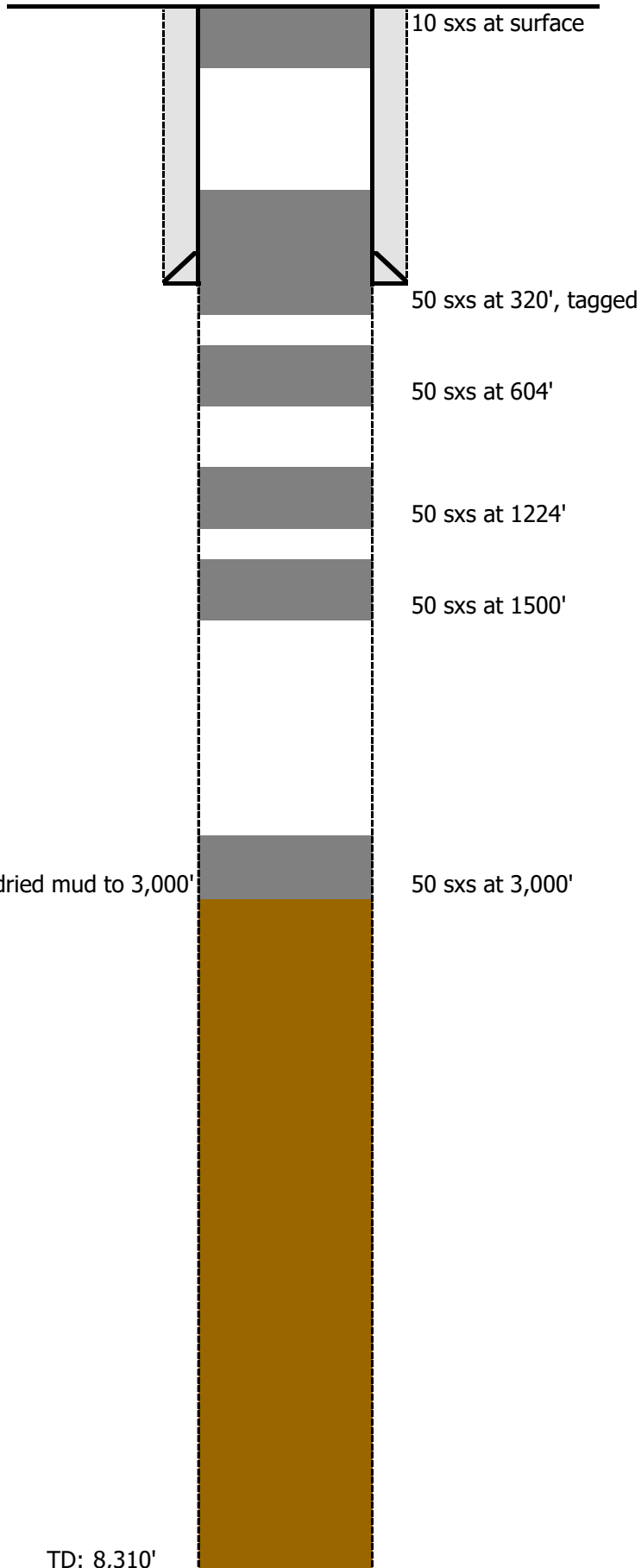
Depth: 8310'

Csg ID:

Csg Drift:

TOC:

Hole Size: 7-7/8"



Updated:

By: Aron Rascon

TD: 8,310'