

Final Reclamation Inspection

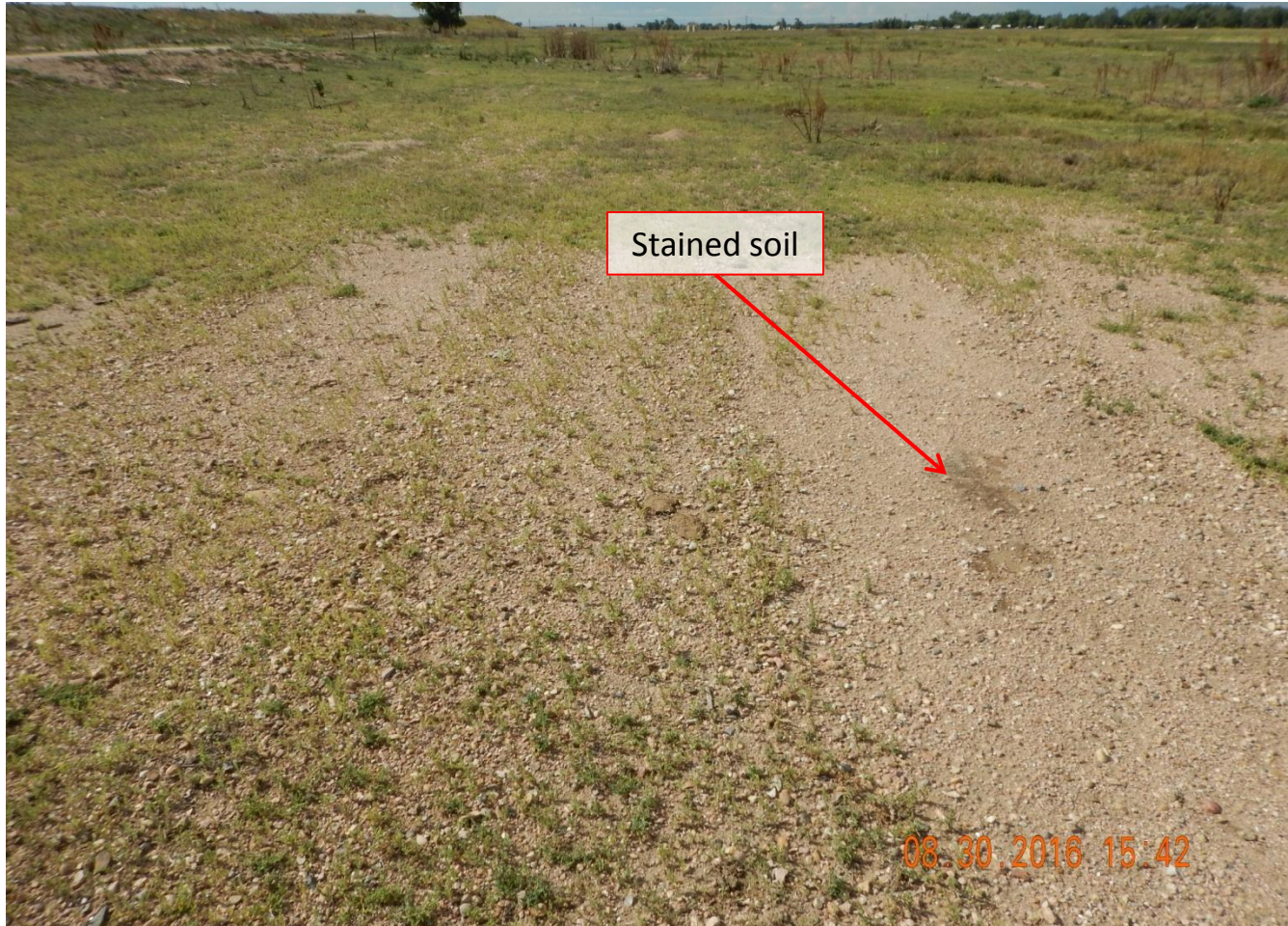


Photo 1. Photo taken from center of location, facing North. Location has not been reclaimed per Rule 1004. Little to no perennial vegetative growth has established at location. Does not appear all of the gravel was removed. Stained soil remains at location and needs to be removed.

Final Reclamation Inspection



Photo 2. Photo taken from center of location, facing East. Location has not been reclaimed per Rule 1004. Little to no perennial vegetative growth has established at location. Does not appear all of the gravel was removed.

Final Reclamation Inspection



Photo 3. Photo taken from center of location, facing South. Location has not been reclaimed per Rule 1004. Little to no perennial vegetative growth has established at location. Does not appear all of the gravel was removed. Stained soil remains at location and needs to be removed.

Final Reclamation Inspection



Photo 4. Reference photo taken south of location, facing South. Vegetative growth does not appear to be reflective of reference areas.