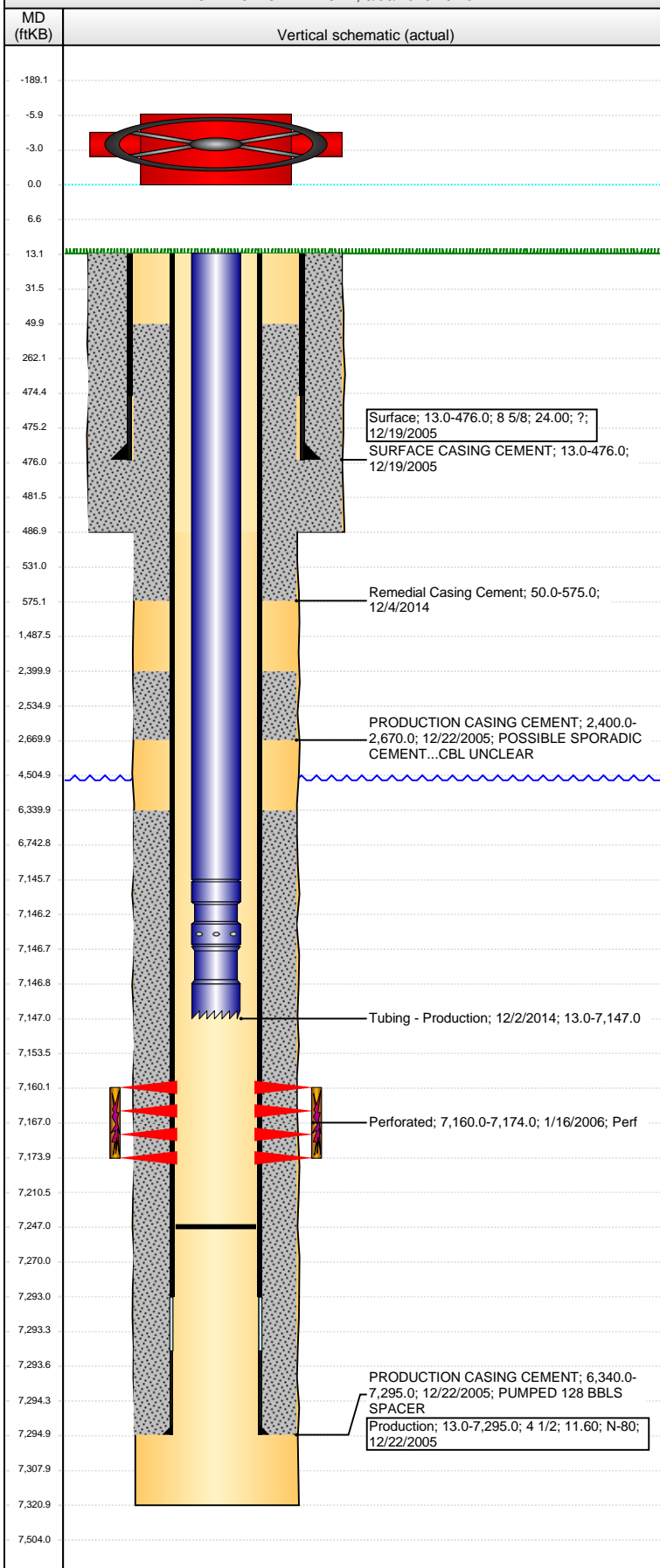


**Well Name:** ALM 13-11

VERTICAL - ORIGINAL HOLE, 8/30/2016 10:49:12 AM



## Well Header

API	Business Unit	District	Well Config
05-123-23305	DJ BASIN	15	VERTICAL
Original KB Elevation (ft)	KB - GL / MSL (ftKB)	Spud Date	P & A Date
4,788	13.00	12/18/2005	
Comment			

## Directions To Well

WCRs 45 & 70, NORTH - 0.4 MILE TO TANK BATTERY, THEN EAST - 0.1 MILE INTO.

## Congressional Location

Quarter 3	Quarter 4	Section	Township	Twship N/S Dir	Range	Range E/W Dir
NW	SW	11	6	N	65	W

## Bottom Hole Location

North-South Distance (ft)	From N or S Line	East-West Distance (ft)	From E or W Line
---------------------------	------------------	-------------------------	------------------

## Plug Back Total Depths

Date	Depth (ftKB)	Method	Com
1/10/2006	7,247.0	CASED HOLE LOG	DEPTH LOGGER ON CBL
10/4/2006	7,247.0	TAG	CLEAN OUT TO LAND TUBING

## Wellbore Sections

Section Des	Size (in)	Act Top, MD (ftKB)	Act Btm, MD (ftKB)
SURFACE	12 1/4	13	487
PRODUCTION	7 7/8	487	7,321

## Zone Statuses

Zone Name	Status Date	Status	Fluid Type	Job	Prod Method
CODELL	1/25/2006	PR		DRILLING/CO...	

## Casing Strings

### Surface, 476.0ftKB

Casing Description	Run Date	OD (in)	Wt/Len (l...)	Grade	Top, MD (ft...)	MD (ftKB)
Surface	12/19/2005	8 5/8	24.00	?	13.0	476.0

### Production, 7,295.0ftKB

Casing Description	Run Date	OD (in)	Wt/Len (l...)	Grade	Top, MD (ft...)	MD (ftKB)
Production	12/22/2005	4 1/2	11.60	N-80	13.0	7,295.0

## Cement

Description	Top Depth (ftKB)	Bottom Depth (ftKB)
SURFACE CASING CEMENT	13.0	476.0
PRODUCTION CASING CEMENT	2,400.0	2,670.0
PRODUCTION CASING CEMENT	6,340.0	7,295.0
Remedial Casing Cement	50.0	575.0

## Tubing Strings

Tubing Description	Run Date	String...	ID (in)	Wt (lb/ft)	Grade	Len (ft)	Set De...
Tubing	10/4/2006	2 3/8	1.995	4.70	J-55	7,135.57	
Tubing - Production	12/2/2014	2 3/8	1.995	4.70	J-55	7,134.02	

## Tubing Components

Item Des	OD (in)	Wt (lb/ft)	Grade	Jts	Len (ft)	Btm (ftKB)	Btm (TVD) (ftKB)
Tubing	2 3/8	4.70	J-55	220	7,132.52	7,145.5	
Pump Seating Nipple	2 3/8	1.10	X	1	1.10	7,146.6	
Notched collar	2 3/8	0.00	X	1	0.40	7,147.0	

## Perforation Data

Zone	Bnch/St g	Entered Shot Total	Top (ftKB)	Btm (ftKB)	Date
CODELL, ORIGINAL HOLE		56	7,160.00	7,174.00	1/16/2006

## Stimulations & Treatments

Date	Zone	Primary Job Type
1/17/2006	CODELL, ORIGINAL HOLE	DRILLING/COMPLETION - ORIGINAL
Technical Result	Tech Result Details	Tech Result Note

Comment

## Other In Hole

Run Date	Des	OD (in)	Top (ftKB)	Btm (ftKB)

**Well Name: ALM 13-11**

VERTICAL - ORIGINAL HOLE, 8/30/2016 10:49:14 AM

## Logs

