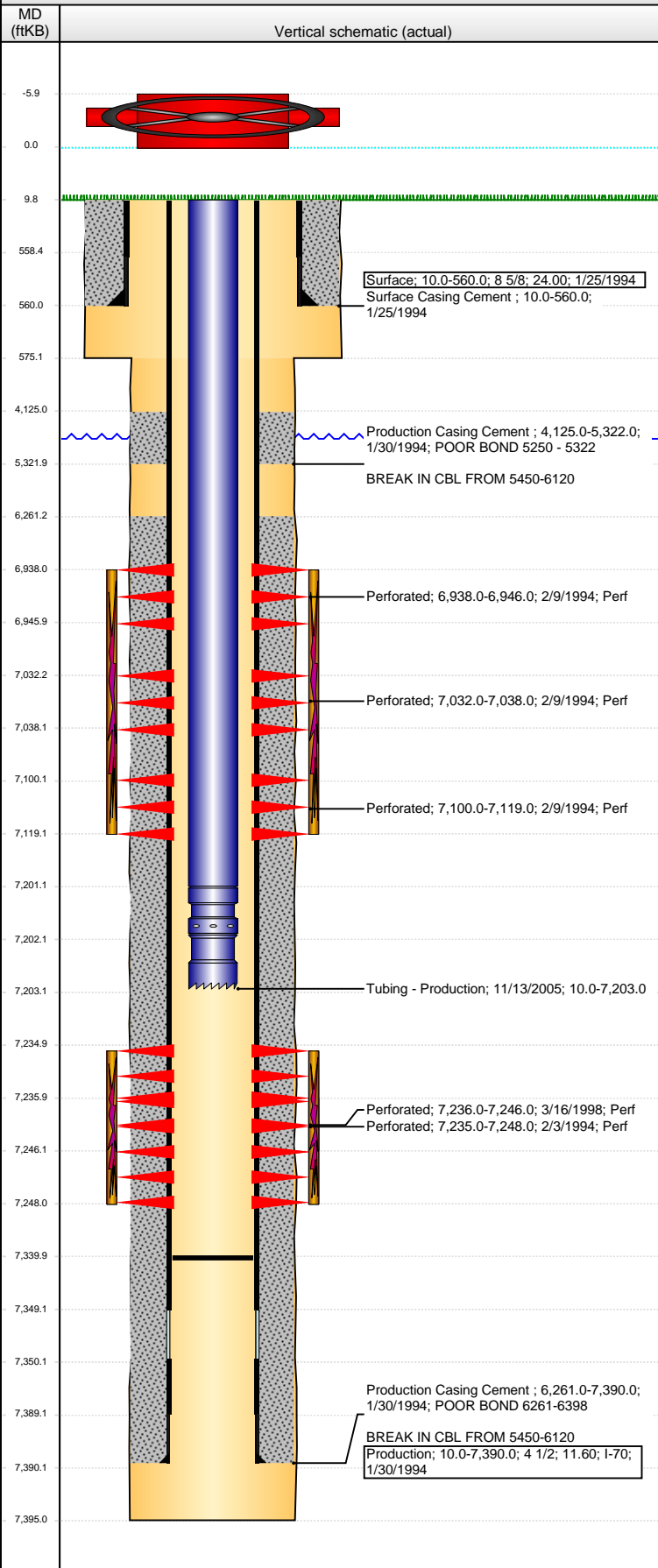


Well Name: SCHMIDT 2-26

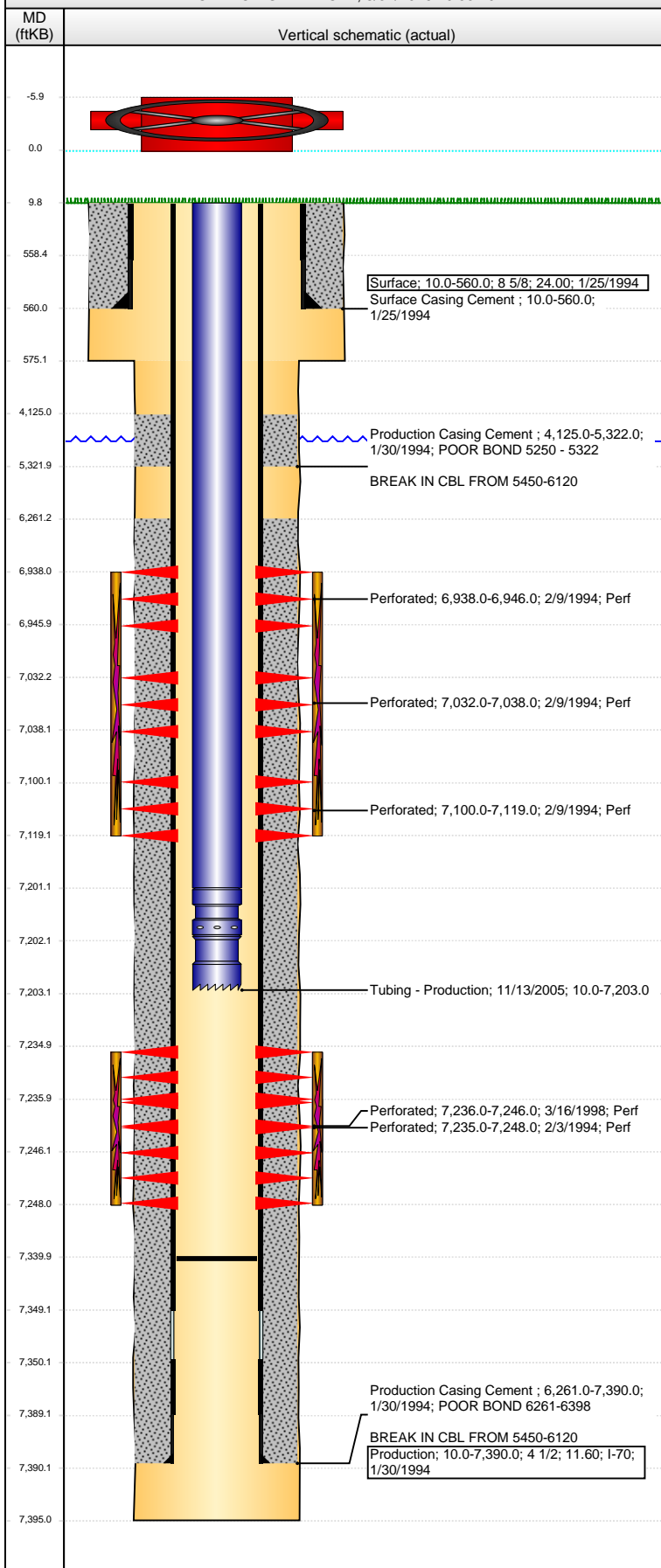
VERTICAL - ORIGINAL HOLE, 8/31/2016 10:53:17 AM



Well Header								
API 05-123-17913		Business Unit DJ BASIN		District 15		Well Config VERTICAL		
Original KB Elevation (ft) 4,752		KB - GL / MSL (ftKB) 10.00		Spud Date 1/25/1994		P & A Date		
Comment								
Directions To Well								
Congressional Location								
Quarter 3 NW		Quarter 4 NE	Section 26	Township 4	Twnshp N/S Dir N	Range 66		Range E/W Dir W
Bottom Hole Location								
North-South Distance (ft)			From N or S Line		East-West Distance (ft)		From E or W Line	
Plug Back Total Depths								
Date		Depth (ftKB)	Method		Com			
2/3/1994		7,336.0	CASED HOLE LOG		DEPTH LOGGER FROM CBL			
3/12/1998		7,335.0	TAG		CLEAN OUT			
9/14/2003		7,375.0	TAG		CLEAN OUT AND LAND TBG			
11/1/2005		7,352.0	TAG		CLEAN OUT			
11/13/2005		7,340.0	TAG		CLEAN OUT AND LAND TBG			
Wellbore Sections								
Section Des			Size (in)	Act Top, MD (ftKB)		Act Btm, MD (ftKB)		
SURFACE			12 1/4	10		575		
PRODUCTION			7 7/8	575		7,395		
Zone Statuses								
Zone Name		Status Date	Status	Fluid Type	Job	Prod Method		
NIOBRARA		2/18/1994	PR	Water	DRILLING/CO...	Flowing		
NIOBRARA		3/24/1998	PR		RE-FRAC, 3/13...			
NIOBRARA		9/21/2003	PR		TRI-FRAC, 9/2/...			
NIOBRARA		4/5/2014	PR					
NIOBRARA		1/19/2015	PR					
CODELL		2/18/1994	PR	Water	DRILLING/CO...	Flowing		
CODELL		3/24/1998	PR		RE-FRAC, 3/13...			
CODELL		9/21/2003	PR		TRI-FRAC, 9/2/...			
CODELL		4/5/2014	PR					
CODELL		1/19/2015	PR					
Casing Strings								
Surface, 560.0ftKB								
Casing Description Surface		Run Date 1/25/1994	OD (in) 8 5/8	Wt/Len (l...) 24.00	Grade	Top, MD (ft...) 10.0	MD (ftKB) 560.0	
Production, 7,390.0ftKB								
Casing Description Production		Run Date 1/30/1994	OD (in) 4 1/2	Wt/Len (l...) 11.60	Grade I-70	Top, MD (ft...) 10.0	MD (ftKB) 7,390.0	
Cement								
Description Surface Casing Cement					Top Depth (ftKB) 10.0		Bottom Depth (ftKB) 560.0	
Description Production Casing Cement					Top Depth (ftKB) 4,125.0		Bottom Depth (ftKB) 5,322.0	
Description Production Casing Cement					Top Depth (ftKB) 6,261.0		Bottom Depth (ftKB) 7,390.0	
Tubing Strings								
Tubing Description Tubing - Production		Run Date 11/13/2005	String... 2 3/8	ID (in) 1.995	Wt (lb/ft) 4.70	Grade J-55	Len (ft) 7,193.00	Set De...
Tubing Components								
Item Des		OD (in)	Wt (lb/ft)	Grade	Jts	Len (ft)	Btm (ftKB)	Btm (TVD) (ftKB)
EUE 8rd Tubing		2 3/8	4.70	J-55	234	7,191.00	7,201.0	
Pump Seating Nipple		2 3/8	1.10		1	1.00	7,202.0	
Notched collar		2 3/8			1	1.00	7,203.0	
Perforation Data								
Zone		Bnch/St g	Entered Shot Total	Top (ftKB)		Btm (ftKB)		Date
NIOBRARA, ORIGINAL HOLE		A	8	6,938.00		6,946.00		2/9/1994
NIOBRARA, ORIGINAL HOLE		B	6	7,032.00		7,038.00		2/9/1994

Well Name: SCHMIDT 2-26

VERTICAL - ORIGINAL HOLE, 8/31/2016 10:53:20 AM



Perforation Data					
Zone	Bnch/St g	Entered Shot Total	Top (ftKB)	Btm (ftKB)	Date
NIOBRARA, ORIGINAL HOLE	C	19	7,100.00	7,119.00	2/9/1994
CODELL, ORIGINAL HOLE		28	7,235.00	7,248.00	2/3/1994
CODELL, ORIGINAL HOLE		40	7,236.00	7,246.00	3/16/1998

Stimulations & Treatments			
Date	Zone	Primary Job Type	
2/7/1994	CODELL, ORIGINAL HOLE	DRILLING/COMPLETION - ORIGINAL	
Technical Result		Tech Result Details	Tech Result Note

Comment FRAC'D VIA CSG & TBG			
Date	Zone	Primary Job Type	
2/10/1994	NIOBRARA, ORIGINAL HOLE	DRILLING/COMPLETION - ORIGINAL	
Technical Result		Tech Result Details	Tech Result Note

Comment FRAC'D VIA CSG & TBG			
Date	Zone	Primary Job Type	
3/17/1998	CODELL, ORIGINAL HOLE	RE-FRAC	
Technical Result		Tech Result Details	Tech Result Note

Comment			
Date	Zone	Primary Job Type	
9/5/2003	CODELL, ORIGINAL HOLE	TRI-FRAC	
Technical Result		Tech Result Details	Tech Result Note
Failure		Mechanical	

Comment PACKER FAILED 50BBLs INTO KCL PUMP			
Date	Zone	Primary Job Type	
9/9/2003	CODELL, ORIGINAL HOLE	TRI-FRAC	
Technical Result		Tech Result Details	Tech Result Note

Comment			
---------	--	--	--

Other In Hole				
Run Date	Des	OD (in)	Top (ftKB)	Btm (ftKB)

Logs			
Date	Type	Top, MD (ftKB)	Btm, MD (ftKB)
1/29/1994	INDUCTION	561.0	7,393.0
2/3/1994	CBL/CCL/GR	3,980.0	7,330.0