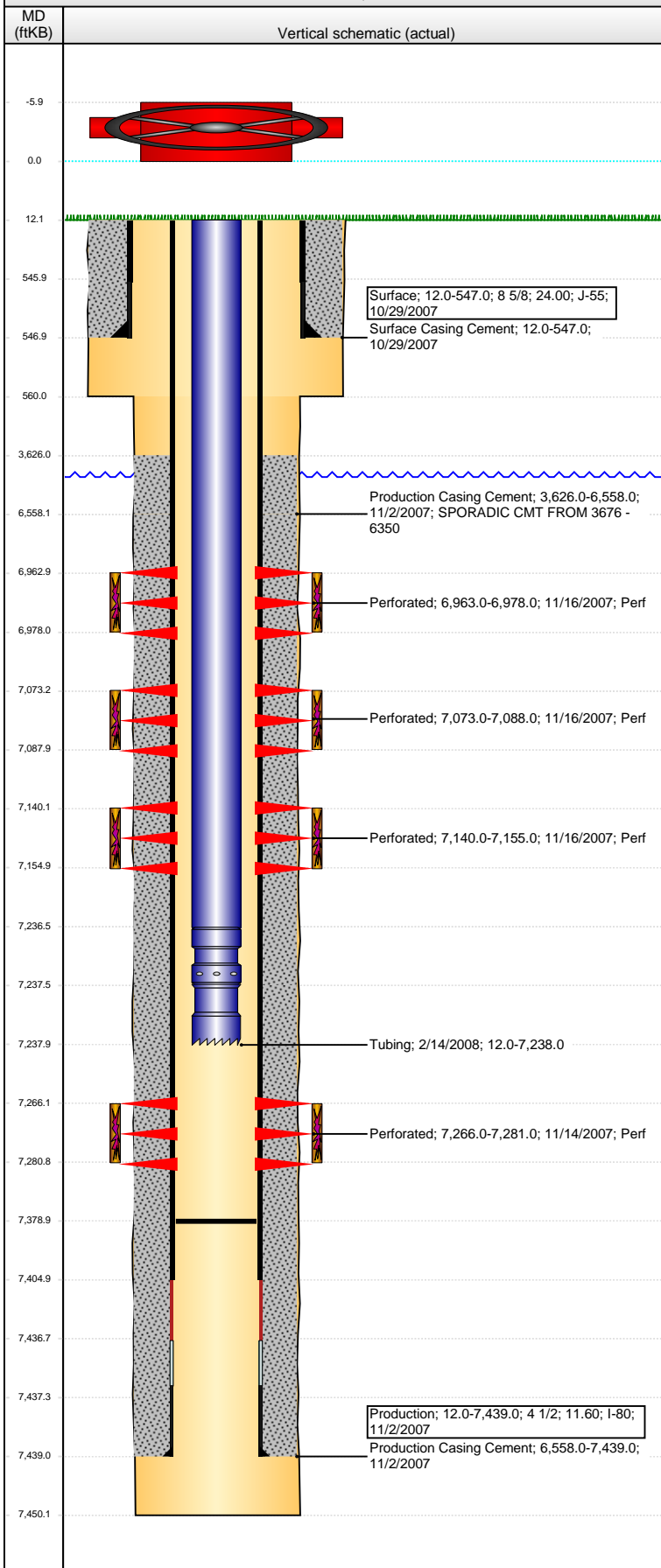


Well Name: STROMBERGER 39-12

DEVIATED - ORIGINAL HOLE, 8/31/2016 9:25:02 AM



Well Header

API 05-123-26473	Business Unit DJ BASIN	District 15	Well Config DEVIATED
Original KB Elevation (ft) 4,717	KB - GL / MSL (ftKB) 12.00	Spud Date 10/28/2007	P & A Date

Comment
WELL DATA SKETCHY

Directions To Well

Congressional Location

Quarter 3 SE	Quarter 4 SE	Section 12	Township 4 N	TwNS Dir N	Range 66	Range E/W Dir W
-----------------	-----------------	---------------	-----------------	---------------	-------------	--------------------

Bottom Hole Location

North-South Distance (ft)	From N or S Line	East-West Distance (ft)	From E or W Line
---------------------------	------------------	-------------------------	------------------

Plug Back Total Depths

Date	Depth (ftKB)	Method	Com
11/14/2007	7,380.0	CASED HOLE LOG	DEPTH LOGGER FROM CBL
2/8/2008	7,405.0	TAG	CLEAN OUT & LAND TBG
1/11/2012	7,379.0	TAG	CLEAN OUT

Wellbore Sections

Section Des	Size (in)	Act Top, MD (ftKB)	Act Btm, MD (ftKB)
SURFACE	12 1/4	12	560
PRODUCTION	7 7/8	560	7,450

Zone Statuses

Zone Name	Status Date	Status	Fluid Type	Job	Prod Method
NIOBRARA	11/27/2007	PR		DRILLING/CO...	
CODELL	11/27/2007	PR		DRILLING/CO...	

Casing Strings

Surface, 547.0ftKB

Casing Description	Run Date	OD (in)	Wt/Len (l...)	Grade	Top, MD (ft...)	MD (ftKB)
Surface	10/29/2007	8 5/8	24.00	J-55	12.0	547.0

Production, 7,439.0ftKB

Casing Description	Run Date	OD (in)	Wt/Len (l...)	Grade	Top, MD (ft...)	MD (ftKB)
Production	11/2/2007	4 1/2	11.60	I-80	12.0	7,439.0

Cement

Description	Top Depth (ftKB)	Bottom Depth (ftKB)
Surface Casing Cement	12.0	547.0
Description	Top Depth (ftKB)	Bottom Depth (ftKB)
Production Casing Cement	3,626.0	6,558.0
Description	Top Depth (ftKB)	Bottom Depth (ftKB)
Production Casing Cement	6,558.0	7,439.0

Tubing Strings

Tubing Description	Run Date	String...	ID (in)	Wt (lb/ft)	Grade	Len (ft)	Set De...
Tubing	2/14/2008	2 3/8	1.995	4.70	J-55	7,226.00	

Tubing Components

Item Des	OD (in)	Wt (lb/ft)	Grade	Jts	Len (ft)	Btm (ftKB)	Btm (TVD) (ftKB)
EUE 8rd Tubing	2 3/8	4.70	J-55	230	7,224.50	7,236.5	
Pump Seating Nipple	2 3/8	1.10			1.00	7,237.5	
Notched collar	2 3/8				0.50	7,238.0	

Perforation Data

Zone	Bnch/St g	Entered Shot Total	Top (ftKB)	Btm (ftKB)	Date
NIOBRARA, ORIGINAL HOLE	A	60	6,963.00	6,978.00	11/16/2007
NIOBRARA, ORIGINAL HOLE	B	60	7,073.00	7,088.00	11/16/2007
NIOBRARA, ORIGINAL HOLE	C	60	7,140.00	7,155.00	11/16/2007
CODELL, ORIGINAL HOLE		60	7,266.00	7,281.00	11/14/2007

Stimulations & Treatments

Date	Zone	Primary Job Type
11/16/2007	CODELL, ORIGINAL HOLE	DRILLING/COMPLETION - ORIGINAL
Technical Result	Tech Result Details	Tech Result Note
Comment		

Well Name: STROMBERGER 39-12

DEVIATED - ORIGINAL HOLE, 8/31/2016 9:25:05 AM

Stimulations & Treatments

Date	Zone	Primary Job Type
11/16/2007	NIOBRARA, ORIGINAL HOLE	DRILLING/COMPLETION - ORIGINAL

Technical Result	Tech Result Details	Tech Result Note

Comment

Date	Zone	Primary Job Type
11/16/2007	NIOBRARA, ORIGINAL HOLE	DRILLING/COMPLETION - ORIGINAL

Technical Result	Tech Result Details	Tech Result Note

Comment

Date	Zone	Primary Job Type
11/16/2007	NIOBRARA, ORIGINAL HOLE	DRILLING/COMPLETION - ORIGINAL

Technical Result	Tech Result Details	Tech Result Note

Comment

Other In Hole

Run Date	Des	OD (in)	Top (ftKB)	Btm (ftKB)

Logs

Date	Type	Top, MD (ftKB)	Btm, MD (ftKB)
11/2/2007	COMPENSATED DENSITY	3,600.0	7,427.0
11/2/2007	INDUCTION	547.0	7,447.0
11/14/2007	CBL/CCL/GR	6,300.0	7,383.0

