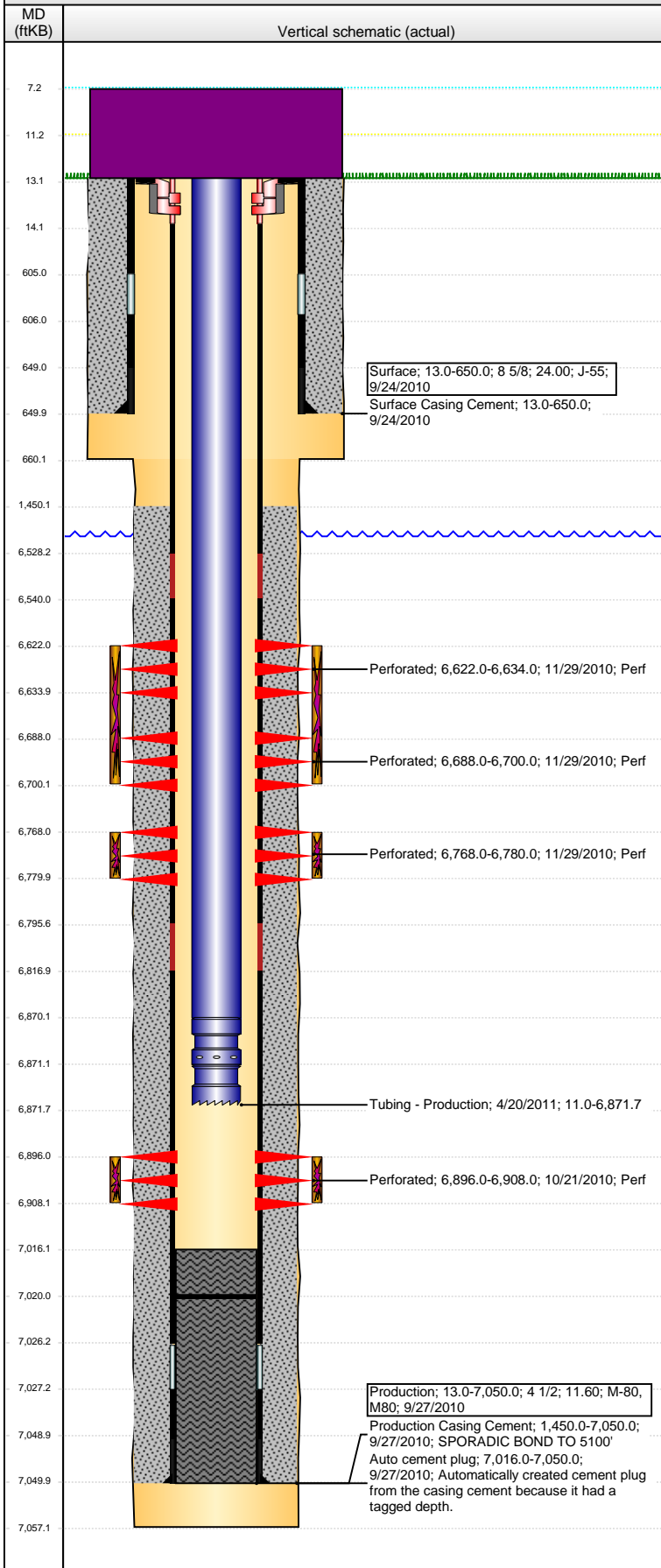


Well Name: ALOYSIUS C34-31

VERTICAL - ORIGINAL HOLE, 8/30/2016 1:55:15 PM



Well Header

API	Business Unit	District	Well Config
05-123-31158	DJ BASIN	15	VERTICAL
Original KB Elevation (ft)	KB - GL / MSL (ftKB)	Spud Date	P & A Date
4,733	13.00	9/24/2010	

Comment

SPORADIC BOND TO 5100'

Directions To Well

FROM WCR 40 & 55, GO SOUTH 0.5 MILE, EAST 0.1 MILE, NORTH 0.25 MILE AND THEN WEST INTO LOCATION

Congressional Location

Quarter 3	Quarter 4	Section	Township	Twship N/S Dir	Range	Range E/W Dir
NW	NW	34	4	N	64	W

Bottom Hole Location

North-South Distance (ft)	From N or S Line	East-West Distance (ft)	From E or W Line

Plug Back Total Depths

Date	Depth (ftKB)	Method	Com
9/27/2010	7,026.0	CASING TALLY	FLOAT COLLAR
10/7/2010	7,016.0	CASED HOLE LOG	DEPTH LOGGER
4/20/2011	7,020.0	TUBING TALLY	112' OF RAT HOLE

Wellbore Sections

Section Des	Size (in)	Act Top, MD (ftKB)	Act Btm, MD (ftKB)
SURFACE	12 1/4	13	660
PRODUCTION	7 7/8	660	7,057

Zone Statuses

Zone Name	Status Date	Status	Fluid Type	Job	Prod Method
CODELL	12/1/2010	PR		DRILLING/CO...	
NIOBRARA	12/1/2010	PR		DRILLING/CO...	

Casing Strings

Surface, 650.0ftKB

Casing Description	Run Date	OD (in)	Wt/Len (l...)	Grade	Top, MD (ft...)	MD (ftKB)
Surface	9/24/2010	8 5/8	24.00	J-55	13.0	650.0

Production, 7,050.0ftKB

Casing Description	Run Date	OD (in)	Wt/Len (l...)	Grade	Top, MD (ft...)	MD (ftKB)
Production	9/27/2010	4 1/2	11.60	M-80	13.0	7,050.0

Cement

Description	Top Depth (ftKB)	Bottom Depth (ftKB)
Surface Casing Cement	13.0	650.0
Description	Top Depth (ftKB)	Bottom Depth (ftKB)
Production Casing Cement	1,450.0	7,050.0

Tubing Strings

Tubing Description	Run Date	String...	ID (in)	Wt (lb/ft)	Grade	Len (ft)	Set De...
Tubing - Production	4/20/2011	2 3/8	1.995	4.70	J-55	6,860.66	6,871.2

Tubing Components

Item Des	OD (in)	Wt (lb/ft)	Grade	Jts	Len (ft)	Btm (ftKB)	Btm (TVD) (ftKB)
Tubing	2 3/8	4.70	J-55	224	6,859.01	6,870.0	
Pump Seating	2 3/8	4.70	J-55	1	1.10	6,871.1	6,870.6
Nipple							
Notched collar	2 3/8	4.70	J-55	1	0.55	6,871.7	6,871.2

Perforation Data

Zone	Bnch/St g	Entered Shot Total	Top (ftKB)	Btm (ftKB)	Date
NIOBRARA, ORIGINAL HOLE	A	24	6,622.00	6,634.00	11/29/2010
NIOBRARA, ORIGINAL HOLE	B	24	6,688.00	6,700.00	11/29/2010
NIOBRARA, ORIGINAL HOLE	C	24	6,768.00	6,780.00	11/29/2010
CODELL, ORIGINAL HOLE		48	6,896.00	6,908.00	10/21/2010

Stimulations & Treatments

Date	Zone	Primary Job Type
11/29/2010	CODELL, ORIGINAL HOLE	DRILLING/COMPLETION - ORIGINAL

Technical Result

Success

Tech Result Details

According to Plan

Tech Result Note

Comment

(CODELL) : PERF OPEN=31, PERF FRICTION=56, NWB=313, WELLBORE=260, TOTAL=629, ISIP=3276, 5 MIN=2860, PUMPED CODELL AT 18 BPM. OPERATIONALLY JOB WENT WELL WITH NO ISSUES TO REPORT. AVG VISC=27.4, PH=10.19, TEMP=59.7, PRESS=3706, RATE=18.8.

Well Name: ALOYSIUS C34-31

VERTICAL - ORIGINAL HOLE, 8/30/2016 1:55:17 PM

Stimulations & Treatments

Date	Zone	Primary Job Type
11/29/2010	NIOBRARA, ORIGINAL HOLE	DRILLING/COMPLETION - ORIGINAL

Technical Result	Tech Result Details	Tech Result Note
Success	According to Plan	

Comment
(NIOBRARA C) HAD TO DROP A LITTLE RATE DURING X-LINK PAD DUE TO PRESSURE INCREASING. SUCKED AIR DURING ACID DISPLACEMENT. OPERATIONALLY JOB WENT WELL WITH NO ISSUES TO REPORT. AVG VISC=24.3, PH=10.08, TEMP=61.9, PRESS=4694, RATE=51.7.

Date	Zone	Primary Job Type
11/29/2010	NIOBRARA, ORIGINAL HOLE	DRILLING/COMPLETION - ORIGINAL

Technical Result	Tech Result Details	Tech Result Note
Success	According to Plan	

Comment
(NIOBRARA A&B) LOST FRAC PUMP DURING THE START OF X-LINK PAD. OPERATIONALLY JOB WENT WELL WITH NO ISSUES TO REPORT. AVG VISC=23.3, PH=10.22, TEMP=60.6, PRESS=4664, RATE=51.3.

Other In Hole

Run Date	Des	OD (in)	Top (ftKB)	Btm (ftKB)

Logs

Date	Type	Top, MD (ftKB)	Btm, MD (ftKB)
9/16/2010	CBL/CCL/GR	1,450.0	7,009.0
10/24/2010	COULD NOT GET LOGS PAST 5600'		
10/24/2010	COULD NOT GET LOGS PAST 5600'		

