

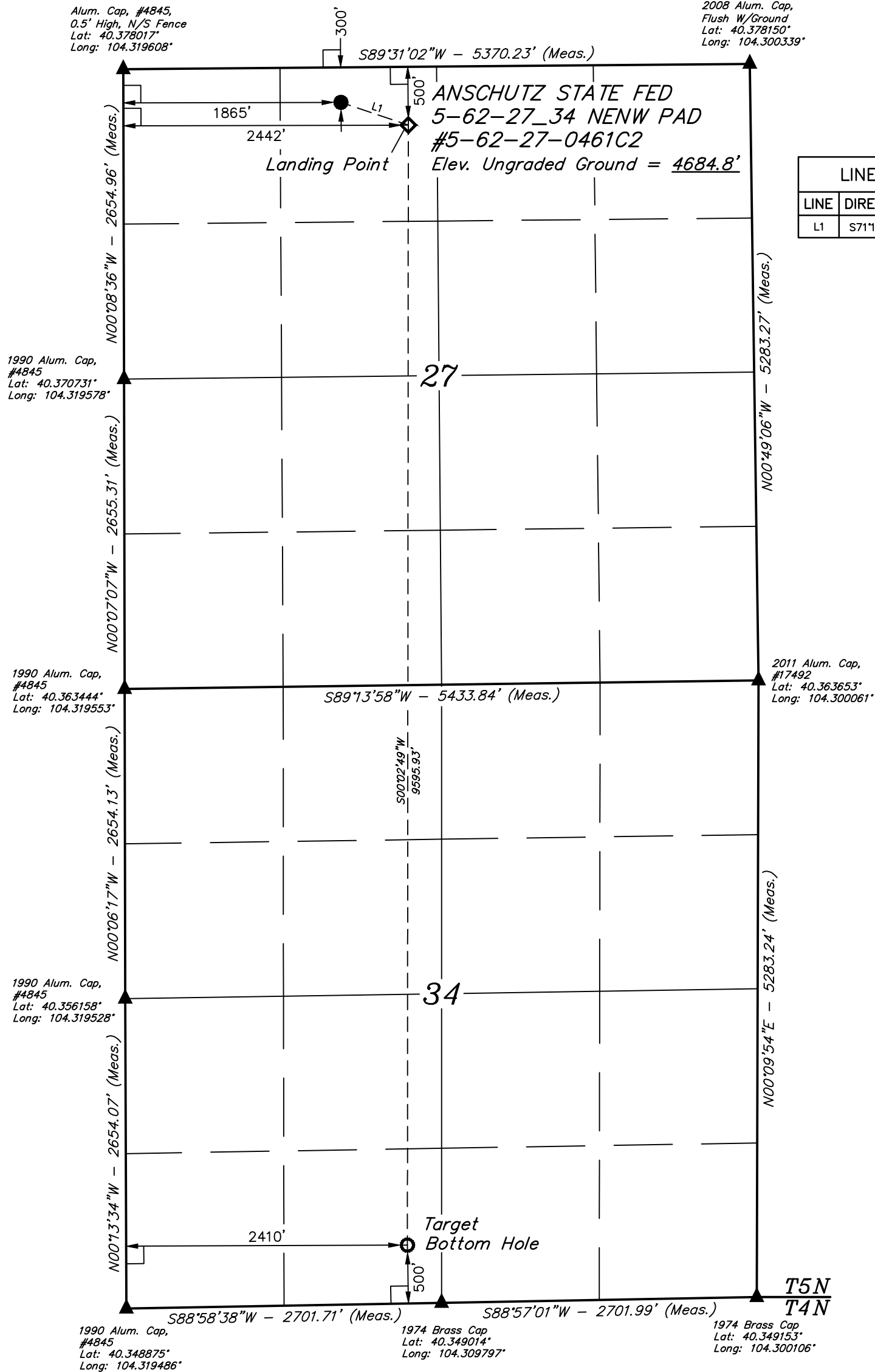
LEGEND:

- └─┘ = 90° SYMBOL
- = PROPOSED WELLHEAD.
- ◆ = LANDING POINT.
- = TARGET BOTTOM HOLE.
- ▲ = SECTION CORNERS LOCATED.

T5N, R62W, 6th P.M.

Alum. Cap, #4845,
0.5' High, N/S Fence
Lat: 40.378017°
Long: 104.319608°

2008 Alum. Cap,
Flush W/Ground
Lat: 40.378150°
Long: 104.300339°



PDOP = 1.4

NAD 83 (SURFACE LOCATION)	NAD 83 (LANDING POINT)	NAD 83 (TARGET BOTTOM HOLE)
LATITUDE = 40°22'38.06" (40.377239) LONGITUDE = 104°18'46.49" (104.312914)	LATITUDE = 40°22'36.14" (40.376706) LONGITUDE = 104°18'39.03" (104.310842)	LATITUDE = 40°21'01.33" (40.350369) LONGITUDE = 104°18'39.06" (104.310850)
NAD 27 (SURFACE LOCATION)	NAD 27 (LANDING POINT)	NAD 27 (TARGET BOTTOM HOLE)
LATITUDE = 40°22'38.13" (40.377258) LONGITUDE = 104°18'44.66" (104.312406)	LATITUDE = 40°22'36.20" (40.376722) LONGITUDE = 104°18'37.20" (104.310333)	LATITUDE = 40°21'01.40" (40.350389) LONGITUDE = 104°18'37.23" (104.310342)
STATE PLANE NAD 83 (CO. NORTH)	STATE PLANE NAD 83 (CO. NORTH)	STATE PLANE NAD 83 (CO. NORTH)
N: 1382482.51 E: 3330717.07	N: 1382295.53 E: 3331297.08	N: 1372702.93 E: 3331423.18
STATE PLANE NAD 27 (CO. NORTH)	STATE PLANE NAD 27 (CO. NORTH)	STATE PLANE NAD 27 (CO. NORTH)
N: 382484.31 E: 2330867.07	N: 382297.33 E: 2331447.08	N: 372704.98 E: 2331573.27

CERTIFICATE
THIS IS TO CERTIFY THAT THE ABOVE PLAT WAS PREPARED FROM FIELD NOTES OF ACTUAL SURVEYS MADE BY ME OR UNDER MY SUPERVISION AND THAT THE SAME ARE TRUE AND CORRECT TO THE BEST OF MY KNOWLEDGE AND BELIEF.



REV: 2 08-16-16 T.B. (LP AND TBH CHANGES)

BASIS OF BEARINGS
BASIS OF BEARINGS IS A G.P.S. OBSERVATION

BASIS OF ELEVATION

SPOT ELEVATION LOCATED AT THE NORTHEAST CORNER OF SECTION 24, T5N, R62W, 6th P.M. TAKEN FROM THE POINT OF ROCKS, QUADRANGLE, COLORADO, WELD COUNTY, 7.5 MINUTE QUAD (TOPOGRAPHIC MAP) PUBLISHED BY THE UNITED STATES DEPARTMENT OF THE INTERIOR, GEOLOGICAL SURVEY. SAID ELEVATION IS MARKED AS BEING 4530 FEET.



BILL BARRETT CORPORATION

**ANSCHUTZ STATE FED 5-62-27_34 NENW PAD
#5-62-27-0461C2
NE 1/4 NW 1/4, SECTION 27, T5N, R62W, 6th P.M.
WELD COUNTY, COLORADO**

SURVEYED BY: BRETT LOWREY, A.F.	DATE: 07-09-14
DRAWN BY: J.S.	DATE DRAWN: 08-01-14
SCALE: 1" = 1000'	

WELL LOCATION PLAT



UELS, LLC
Corporate Office * 85 South 200 East
Vernal, UT 84078 * (435) 789-1017