



PROJECT DETAILS: Weld County, CO NAD 83	
Geodetic System:	US State Plane 1983
Datum:	North American Datum 1983
Ellipsoid:	GRS 1980
Zone:	Colorado Northern Zone
System Datum:	Mean Sea Level
Local North:	True

Project:	Weld County, CO NAD 83
Site:	Anschutz State Fed 5-62-27_34 NENW Pad
Well:	Anschutz State Fed 5-62-27-0362C2
Wellbore:	OH
Design:	Plan 2



Azinuths to True North
Magnetic North: 8.19°

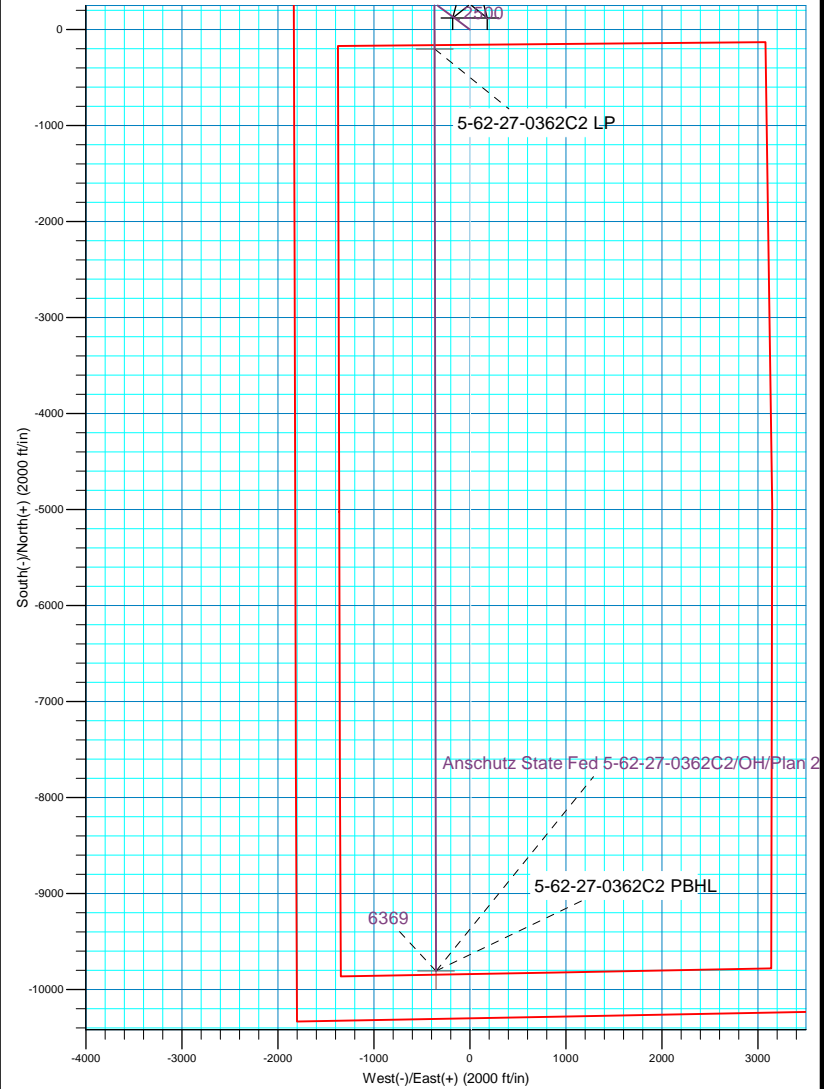
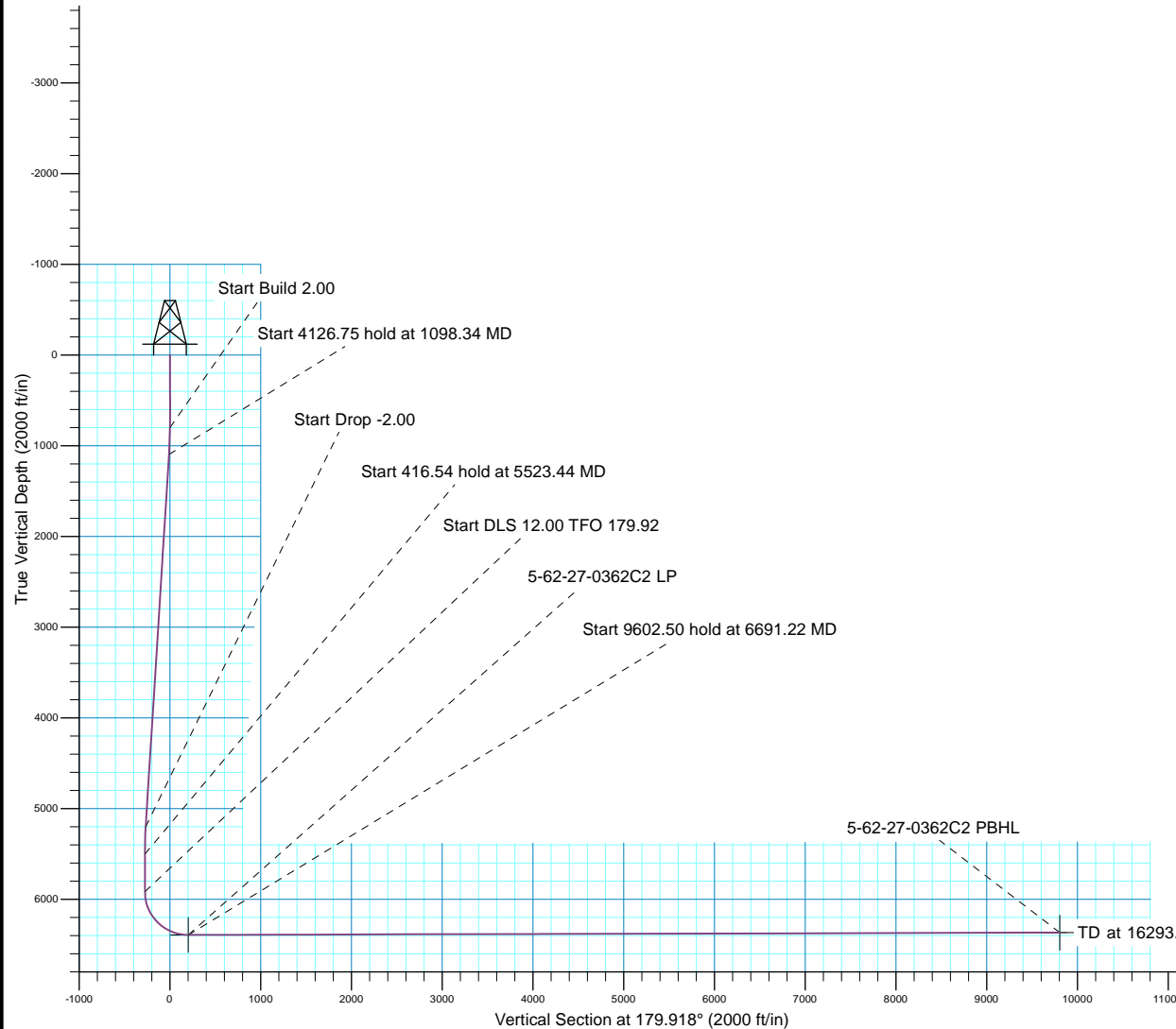
Magnetic Field
Strength: 52538.8nT
Dip Angle: 66.96°
Date: 8/26/2016
Model: BGGM2016

Plan: Plan 2 (Anschutz State Fed 5-62-27-0362C2/OH)

Created By: Seth Burstad Date: 8-26-2016

SECTION DETAILS								
MD	Inc	Azi	TVD	+N/-S	+E/-W	Dleg	TFace	VSect
0.00	0.00	0.000	0.00	0.00	0.00	0.00	0.00	0.00
800.00	0.00	0.000	800.00	0.00	0.00	0.00	0.00	0.00
1098.34	5.97	306.781	1097.80	9.29	-12.43	2.00	306.78	-9.31
5225.09	5.97	306.781	5202.20	266.15	-356.02	0.00	0.00	-266.66
5523.44	0.00	0.000	5500.00	275.44	-368.45	2.00	180.00	-275.97
5939.98	0.00	0.000	5916.54	275.44	-368.45	0.00	0.00	-275.97
6691.22	90.15	179.918	6394.00	-203.26	-367.76	12.00	179.92	202.74
16293.71	90.15	179.918	6369.00	-9805.72	-353.97	0.00	0.00	9805.20

WELL DETAILS: Anschutz State Fed 5-62-27-0362C2					
GL 4683' & KB 16' @ 4699.00ft 4683.00					
+N/-S	+E/-W	Northing	Easting	Latitude	Longitude
0.00	0.00	1382481.92	3330686.78	40° 22' 38.060 N	104° 18' 46.879 W





Bill Barrett Corp.

Weld County, CO NAD 83

Anschutz State Fed 5-62-27_34 NENW Pad

Anschutz State Fed 5-62-27-0362C2

OH

Plan: Plan 2

Standard Planning Report

26 August, 2016



Database:	Casper District	Local Co-ordinate Reference:	Well Anschutz State Fed 5-62-27-0362C2
Company:	Bill Barrett Corp.	TVD Reference:	GL 4683' & KB 16' @ 4699.00ft
Project:	Weld County, CO NAD 83	MD Reference:	GL 4683' & KB 16' @ 4699.00ft
Site:	Anschutz State Fed 5-62-27_34 NENW Pad	North Reference:	True
Well:	Anschutz State Fed 5-62-27-0362C2	Survey Calculation Method:	Minimum Curvature
Wellbore:	OH		
Design:	Plan 2		

Project	Weld County, CO NAD 83		
Map System:	US State Plane 1983	System Datum:	Mean Sea Level
Geo Datum:	North American Datum 1983		
Map Zone:	Colorado Northern Zone		

Site						Anschutz State Fed 5-62-27_34 NENW Pad, Site Center : 5-62-27-0461C2					
Site Position:		Northing:		1,382,482.33 usft		Latitude:		40° 22' 38.060 N			
From:		Lat/Long		Easting:		3,330,716.87 usft		Longitude:		104° 18' 46.490 W	
Position Uncertainty:		0.00 ft		Slot Radius:		13.200 in		Grid Convergence:		0.77 °	

Well	Anschutz State Fed 5-62-27-0362C2, 300' FNL 1835' FWL Sec 27 T5N R62W					
Well Position	+N/-S	-0.01 ft	Northing:	1,382,481.92 usft	Latitude:	40° 22' 38.060 N
	+E/-W	-30.09 ft	Easting:	3,330,686.79 usft	Longitude:	104° 18' 46.879 W
Position Uncertainty		0.00 ft	Wellhead Elevation:	0.00 ft	Ground Level:	4,683.00 ft

Wellbore	OH					
Magnetics	Model Name	Sample Date	Declination (°)	Dip Angle (°)	Field Strength (nT)	
	BGGM2015	11/10/2015	8.26	67.02	52,634	
	BGGM2016	8/26/2016	8.19	66.96	52,539	

Design	Plan 2				
Audit Notes:					
Version:	Phase:	PLAN	Tie On Depth:	0.00	
Vertical Section:	Depth From (TVD) (ft)	+N/-S (ft)	+E/-W (ft)	Direction (°)	
	0.00	0.00	0.00	179.918	

Plan Sections										
Measured Depth (ft)	Inclination (°)	Azimuth (°)	Vertical Depth (ft)	+N/-S (ft)	+E/-W (ft)	Dogleg Rate (°/100ft)	Build Rate (°/100ft)	Turn Rate (°/100ft)	TFO (°)	Target
0.00	0.00	0.000	0.00	0.00	0.00	0.00	0.00	0.00	0.00	
800.00	0.00	0.000	800.00	0.00	0.00	0.00	0.00	0.00	0.00	
1,098.34	5.97	306.781	1,097.80	9.29	-12.43	2.00	2.00	0.00	306.78	
5,225.09	5.97	306.781	5,202.20	266.15	-356.02	0.00	0.00	0.00	0.00	
5,523.44	0.00	0.000	5,500.00	275.44	-368.45	2.00	-2.00	0.00	180.00	
5,939.98	0.00	0.000	5,916.54	275.44	-368.45	0.00	0.00	0.00	0.00	
6,691.22	90.15	179.918	6,394.00	-203.26	-367.76	12.00	12.00	23.95	179.92	
16,293.71	90.15	179.918	6,369.00	-9,805.71	-353.97	0.00	0.00	0.00	0.00	5-62-27-0362C2 PBH

Database:	Casper District	Local Co-ordinate Reference:	Well Anschutz State Fed 5-62-27-0362C2
Company:	Bill Barrett Corp.	TVD Reference:	GL 4683' & KB 16' @ 4699.00ft
Project:	Weld County, CO NAD 83	MD Reference:	GL 4683' & KB 16' @ 4699.00ft
Site:	Anschutz State Fed 5-62-27_34 NENW Pad	North Reference:	True
Well:	Anschutz State Fed 5-62-27-0362C2	Survey Calculation Method:	Minimum Curvature
Wellbore:	OH		
Design:	Plan 2		

Planned Survey									
Measured Depth (ft)	Inclination (°)	Azimuth (°)	Vertical Depth (ft)	+N/-S (ft)	+E/-W (ft)	Vertical Section (ft)	Dogleg Rate (°/100ft)	Build Rate (°/100ft)	Turn Rate (°/100ft)
0.00	0.00	0.000	0.00	0.00	0.00	0.00	0.00	0.00	0.00
100.00	0.00	0.000	100.00	0.00	0.00	0.00	0.00	0.00	0.00
200.00	0.00	0.000	200.00	0.00	0.00	0.00	0.00	0.00	0.00
300.00	0.00	0.000	300.00	0.00	0.00	0.00	0.00	0.00	0.00
400.00	0.00	0.000	400.00	0.00	0.00	0.00	0.00	0.00	0.00
500.00	0.00	0.000	500.00	0.00	0.00	0.00	0.00	0.00	0.00
600.00	0.00	0.000	600.00	0.00	0.00	0.00	0.00	0.00	0.00
700.00	0.00	0.000	700.00	0.00	0.00	0.00	0.00	0.00	0.00
800.00	0.00	0.000	800.00	0.00	0.00	0.00	0.00	0.00	0.00
Start Build 2.00									
900.00	2.00	306.781	899.98	1.04	-1.40	-1.05	2.00	2.00	0.00
1,000.00	4.00	306.781	999.84	4.18	-5.59	-4.19	2.00	2.00	0.00
1,098.34	5.97	306.781	1,097.80	9.29	-12.43	-9.31	2.00	2.00	0.00
Start 4126.75 hold at 1098.34 MD									
1,100.00	5.97	306.781	1,099.45	9.40	-12.57	-9.41	0.00	0.00	0.00
1,200.00	5.97	306.781	1,198.91	15.62	-20.90	-15.65	0.00	0.00	0.00
1,300.00	5.97	306.781	1,298.37	21.84	-29.22	-21.89	0.00	0.00	0.00
1,400.00	5.97	306.781	1,397.83	28.07	-37.55	-28.12	0.00	0.00	0.00
1,500.00	5.97	306.781	1,497.28	34.29	-45.87	-34.36	0.00	0.00	0.00
1,600.00	5.97	306.781	1,596.74	40.52	-54.20	-40.59	0.00	0.00	0.00
1,700.00	5.97	306.781	1,696.20	46.74	-62.52	-46.83	0.00	0.00	0.00
1,800.00	5.97	306.781	1,795.66	52.97	-70.85	-53.07	0.00	0.00	0.00
1,900.00	5.97	306.781	1,895.12	59.19	-79.18	-59.30	0.00	0.00	0.00
2,000.00	5.97	306.781	1,994.58	65.41	-87.50	-65.54	0.00	0.00	0.00
2,100.00	5.97	306.781	2,094.03	71.64	-95.83	-71.78	0.00	0.00	0.00
2,200.00	5.97	306.781	2,193.49	77.86	-104.15	-78.01	0.00	0.00	0.00
2,300.00	5.97	306.781	2,292.95	84.09	-112.48	-84.25	0.00	0.00	0.00
2,400.00	5.97	306.781	2,392.41	90.31	-120.81	-90.48	0.00	0.00	0.00
2,500.00	5.97	306.781	2,491.87	96.54	-129.13	-96.72	0.00	0.00	0.00
2,600.00	5.97	306.781	2,591.33	102.76	-137.46	-102.96	0.00	0.00	0.00
2,700.00	5.97	306.781	2,690.78	108.98	-145.78	-109.19	0.00	0.00	0.00
2,800.00	5.97	306.781	2,790.24	115.21	-154.11	-115.43	0.00	0.00	0.00
2,900.00	5.97	306.781	2,889.70	121.43	-162.44	-121.66	0.00	0.00	0.00
3,000.00	5.97	306.781	2,989.16	127.66	-170.76	-127.90	0.00	0.00	0.00
3,100.00	5.97	306.781	3,088.62	133.88	-179.09	-134.14	0.00	0.00	0.00
3,200.00	5.97	306.781	3,188.07	140.10	-187.41	-140.37	0.00	0.00	0.00
3,300.00	5.97	306.781	3,287.53	146.33	-195.74	-146.61	0.00	0.00	0.00
3,400.00	5.97	306.781	3,386.99	152.55	-204.06	-152.85	0.00	0.00	0.00
3,500.00	5.97	306.781	3,486.45	158.78	-212.39	-159.08	0.00	0.00	0.00
3,600.00	5.97	306.781	3,585.91	165.00	-220.72	-165.32	0.00	0.00	0.00
3,700.00	5.97	306.781	3,685.37	171.23	-229.04	-171.55	0.00	0.00	0.00
3,800.00	5.97	306.781	3,784.82	177.45	-237.37	-177.79	0.00	0.00	0.00
3,900.00	5.97	306.781	3,884.28	183.67	-245.69	-184.03	0.00	0.00	0.00
4,000.00	5.97	306.781	3,983.74	189.90	-254.02	-190.26	0.00	0.00	0.00
4,100.00	5.97	306.781	4,083.20	196.12	-262.35	-196.50	0.00	0.00	0.00
4,200.00	5.97	306.781	4,182.66	202.35	-270.67	-202.73	0.00	0.00	0.00
4,300.00	5.97	306.781	4,282.12	208.57	-279.00	-208.97	0.00	0.00	0.00
4,400.00	5.97	306.781	4,381.57	214.80	-287.32	-215.21	0.00	0.00	0.00
4,500.00	5.97	306.781	4,481.03	221.02	-295.65	-221.44	0.00	0.00	0.00
4,600.00	5.97	306.781	4,580.49	227.24	-303.98	-227.68	0.00	0.00	0.00
4,700.00	5.97	306.781	4,679.95	233.47	-312.30	-233.91	0.00	0.00	0.00
4,800.00	5.97	306.781	4,779.41	239.69	-320.63	-240.15	0.00	0.00	0.00
4,900.00	5.97	306.781	4,878.86	245.92	-328.95	-246.39	0.00	0.00	0.00
5,000.00	5.97	306.781	4,978.32	252.14	-337.28	-252.62	0.00	0.00	0.00

Database:	Casper District	Local Co-ordinate Reference:	Well Anschutz State Fed 5-62-27-0362C2
Company:	Bill Barrett Corp.	TVD Reference:	GL 4683' & KB 16' @ 4699.00ft
Project:	Weld County, CO NAD 83	MD Reference:	GL 4683' & KB 16' @ 4699.00ft
Site:	Anschutz State Fed 5-62-27_34 NENW Pad	North Reference:	True
Well:	Anschutz State Fed 5-62-27-0362C2	Survey Calculation Method:	Minimum Curvature
Wellbore:	OH		
Design:	Plan 2		

Planned Survey									
Measured Depth (ft)	Inclination (°)	Azimuth (°)	Vertical Depth (ft)	+N/-S (ft)	+E/-W (ft)	Vertical Section (ft)	Dogleg Rate (°/100ft)	Build Rate (°/100ft)	Turn Rate (°/100ft)
5,100.00	5.97	306.781	5,077.78	258.36	-345.60	-258.86	0.00	0.00	0.00
5,200.00	5.97	306.781	5,177.24	264.59	-353.93	-265.10	0.00	0.00	0.00
5,225.09	5.97	306.781	5,202.20	266.15	-356.02	-266.66	0.00	0.00	0.00
Start Drop -2.00									
5,300.00	4.47	306.781	5,276.79	270.23	-361.48	-270.75	2.00	-2.00	0.00
5,400.00	2.47	306.781	5,376.60	273.85	-366.32	-274.38	2.00	-2.00	0.00
5,500.00	0.47	306.781	5,476.56	275.39	-368.37	-275.91	2.00	-2.00	0.00
5,523.44	0.00	0.000	5,500.00	275.44	-368.45	-275.97	2.00	-2.00	0.00
Start 416.54 hold at 5523.44 MD									
5,600.00	0.00	0.000	5,576.56	275.44	-368.45	-275.97	0.00	0.00	0.00
5,700.00	0.00	0.000	5,676.56	275.44	-368.45	-275.97	0.00	0.00	0.00
5,800.00	0.00	0.000	5,776.56	275.44	-368.45	-275.97	0.00	0.00	0.00
5,900.00	0.00	0.000	5,876.56	275.44	-368.45	-275.97	0.00	0.00	0.00
5,939.98	0.00	0.000	5,916.54	275.44	-368.45	-275.97	0.00	0.00	0.00
Start DLS 12.00 TFO 179.92									
6,000.00	7.20	179.918	5,976.41	271.68	-368.45	-272.20	12.00	12.00	0.00
6,100.00	19.20	179.918	6,073.59	248.88	-368.41	-249.40	12.00	12.00	0.00
6,200.00	31.20	179.918	6,163.90	206.37	-368.35	-206.90	12.00	12.00	0.00
6,300.00	43.20	179.918	6,243.41	146.02	-368.26	-146.55	12.00	12.00	0.00
6,400.00	55.20	179.918	6,308.62	70.46	-368.16	-70.98	12.00	12.00	0.00
6,500.00	67.20	179.918	6,356.71	-17.02	-368.03	16.49	12.00	12.00	0.00
6,600.00	79.20	179.918	6,385.55	-112.58	-367.89	112.05	12.00	12.00	0.00
6,691.22	90.15	179.918	6,394.00	-203.26	-367.76	202.74	12.00	12.00	0.00
Start 9602.50 hold at 6691.22 MD									
6,700.00	90.15	179.918	6,393.98	-212.04	-367.75	211.52	0.00	0.00	0.00
6,800.00	90.15	179.918	6,393.72	-312.04	-367.61	311.52	0.00	0.00	0.00
6,900.00	90.15	179.918	6,393.46	-412.04	-367.46	411.52	0.00	0.00	0.00
7,000.00	90.15	179.918	6,393.20	-512.04	-367.32	511.52	0.00	0.00	0.00
7,100.00	90.15	179.918	6,392.94	-612.04	-367.18	611.52	0.00	0.00	0.00
7,200.00	90.15	179.918	6,392.68	-712.04	-367.03	711.52	0.00	0.00	0.00
7,300.00	90.15	179.918	6,392.42	-812.04	-366.89	811.52	0.00	0.00	0.00
7,400.00	90.15	179.918	6,392.16	-912.04	-366.74	911.52	0.00	0.00	0.00
7,500.00	90.15	179.918	6,391.90	-1,012.04	-366.60	1,011.52	0.00	0.00	0.00
7,600.00	90.15	179.918	6,391.64	-1,112.04	-366.46	1,111.52	0.00	0.00	0.00
7,700.00	90.15	179.918	6,391.38	-1,212.04	-366.31	1,211.51	0.00	0.00	0.00
7,800.00	90.15	179.918	6,391.12	-1,312.04	-366.17	1,311.51	0.00	0.00	0.00
7,900.00	90.15	179.918	6,390.86	-1,412.04	-366.03	1,411.51	0.00	0.00	0.00
8,000.00	90.15	179.918	6,390.60	-1,512.04	-365.88	1,511.51	0.00	0.00	0.00
8,100.00	90.15	179.918	6,390.34	-1,612.04	-365.74	1,611.51	0.00	0.00	0.00
8,200.00	90.15	179.918	6,390.07	-1,712.04	-365.60	1,711.51	0.00	0.00	0.00
8,300.00	90.15	179.918	6,389.81	-1,812.04	-365.45	1,811.51	0.00	0.00	0.00
8,400.00	90.15	179.918	6,389.55	-1,912.04	-365.31	1,911.51	0.00	0.00	0.00
8,500.00	90.15	179.918	6,389.29	-2,012.04	-365.16	2,011.51	0.00	0.00	0.00
8,600.00	90.15	179.918	6,389.03	-2,112.04	-365.02	2,111.51	0.00	0.00	0.00
8,700.00	90.15	179.918	6,388.77	-2,212.04	-364.88	2,211.51	0.00	0.00	0.00
8,800.00	90.15	179.918	6,388.51	-2,312.04	-364.73	2,311.51	0.00	0.00	0.00
8,900.00	90.15	179.918	6,388.25	-2,412.03	-364.59	2,411.51	0.00	0.00	0.00
9,000.00	90.15	179.918	6,387.99	-2,512.03	-364.45	2,511.51	0.00	0.00	0.00
9,100.00	90.15	179.918	6,387.73	-2,612.03	-364.30	2,611.51	0.00	0.00	0.00
9,200.00	90.15	179.918	6,387.47	-2,712.03	-364.16	2,711.51	0.00	0.00	0.00
9,300.00	90.15	179.918	6,387.21	-2,812.03	-364.02	2,811.51	0.00	0.00	0.00
9,400.00	90.15	179.918	6,386.95	-2,912.03	-363.87	2,911.51	0.00	0.00	0.00
9,500.00	90.15	179.918	6,386.69	-3,012.03	-363.73	3,011.51	0.00	0.00	0.00

Database:	Casper District	Local Co-ordinate Reference:	Well Anschutz State Fed 5-62-27-0362C2
Company:	Bill Barrett Corp.	TVD Reference:	GL 4683' & KB 16' @ 4699.00ft
Project:	Weld County, CO NAD 83	MD Reference:	GL 4683' & KB 16' @ 4699.00ft
Site:	Anschutz State Fed 5-62-27_34 NENW Pad	North Reference:	True
Well:	Anschutz State Fed 5-62-27-0362C2	Survey Calculation Method:	Minimum Curvature
Wellbore:	OH		
Design:	Plan 2		

Planned Survey										
Measured Depth (ft)	Inclination (°)	Azimuth (°)	Vertical Depth (ft)	+N/-S (ft)	+E/-W (ft)	Vertical Section (ft)	Dogleg Rate (°/100ft)	Build Rate (°/100ft)	Turn Rate (°/100ft)	
9,600.00	90.15	179.918	6,386.43	-3,112.03	-363.58	3,111.51	0.00	0.00	0.00	
9,700.00	90.15	179.918	6,386.17	-3,212.03	-363.44	3,211.51	0.00	0.00	0.00	
9,800.00	90.15	179.918	6,385.91	-3,312.03	-363.30	3,311.51	0.00	0.00	0.00	
9,900.00	90.15	179.918	6,385.65	-3,412.03	-363.15	3,411.51	0.00	0.00	0.00	
10,000.00	90.15	179.918	6,385.39	-3,512.03	-363.01	3,511.51	0.00	0.00	0.00	
10,100.00	90.15	179.918	6,385.13	-3,612.03	-362.87	3,611.51	0.00	0.00	0.00	
10,200.00	90.15	179.918	6,384.87	-3,712.03	-362.72	3,711.51	0.00	0.00	0.00	
10,300.00	90.15	179.918	6,384.61	-3,812.03	-362.58	3,811.51	0.00	0.00	0.00	
10,400.00	90.15	179.918	6,384.35	-3,912.03	-362.43	3,911.51	0.00	0.00	0.00	
10,500.00	90.15	179.918	6,384.09	-4,012.03	-362.29	4,011.51	0.00	0.00	0.00	
10,600.00	90.15	179.918	6,383.83	-4,112.03	-362.15	4,111.50	0.00	0.00	0.00	
10,700.00	90.15	179.918	6,383.57	-4,212.03	-362.00	4,211.50	0.00	0.00	0.00	
10,800.00	90.15	179.918	6,383.30	-4,312.03	-361.86	4,311.50	0.00	0.00	0.00	
10,900.00	90.15	179.918	6,383.04	-4,412.03	-361.72	4,411.50	0.00	0.00	0.00	
11,000.00	90.15	179.918	6,382.78	-4,512.03	-361.57	4,511.50	0.00	0.00	0.00	
11,100.00	90.15	179.918	6,382.52	-4,612.03	-361.43	4,611.50	0.00	0.00	0.00	
11,200.00	90.15	179.918	6,382.26	-4,712.02	-361.29	4,711.50	0.00	0.00	0.00	
11,300.00	90.15	179.918	6,382.00	-4,812.02	-361.14	4,811.50	0.00	0.00	0.00	
11,400.00	90.15	179.918	6,381.74	-4,912.02	-361.00	4,911.50	0.00	0.00	0.00	
11,500.00	90.15	179.918	6,381.48	-5,012.02	-360.85	5,011.50	0.00	0.00	0.00	
11,600.00	90.15	179.918	6,381.22	-5,112.02	-360.71	5,111.50	0.00	0.00	0.00	
11,700.00	90.15	179.918	6,380.96	-5,212.02	-360.57	5,211.50	0.00	0.00	0.00	
11,800.00	90.15	179.918	6,380.70	-5,312.02	-360.42	5,311.50	0.00	0.00	0.00	
11,900.00	90.15	179.918	6,380.44	-5,412.02	-360.28	5,411.50	0.00	0.00	0.00	
12,000.00	90.15	179.918	6,380.18	-5,512.02	-360.14	5,511.50	0.00	0.00	0.00	
12,100.00	90.15	179.918	6,379.92	-5,612.02	-359.99	5,611.50	0.00	0.00	0.00	
12,200.00	90.15	179.918	6,379.66	-5,712.02	-359.85	5,711.50	0.00	0.00	0.00	
12,300.00	90.15	179.918	6,379.40	-5,812.02	-359.71	5,811.50	0.00	0.00	0.00	
12,400.00	90.15	179.918	6,379.14	-5,912.02	-359.56	5,911.50	0.00	0.00	0.00	
12,500.00	90.15	179.918	6,378.88	-6,012.02	-359.42	6,011.50	0.00	0.00	0.00	
12,600.00	90.15	179.918	6,378.62	-6,112.02	-359.27	6,111.50	0.00	0.00	0.00	
12,700.00	90.15	179.918	6,378.36	-6,212.02	-359.13	6,211.50	0.00	0.00	0.00	
12,800.00	90.15	179.918	6,378.10	-6,312.02	-358.99	6,311.50	0.00	0.00	0.00	
12,900.00	90.15	179.918	6,377.84	-6,412.02	-358.84	6,411.50	0.00	0.00	0.00	
13,000.00	90.15	179.918	6,377.58	-6,512.02	-358.70	6,511.50	0.00	0.00	0.00	
13,100.00	90.15	179.918	6,377.32	-6,612.02	-358.56	6,611.50	0.00	0.00	0.00	
13,200.00	90.15	179.918	6,377.06	-6,712.02	-358.41	6,711.50	0.00	0.00	0.00	
13,300.00	90.15	179.918	6,376.80	-6,812.02	-358.27	6,811.50	0.00	0.00	0.00	
13,400.00	90.15	179.918	6,376.53	-6,912.02	-358.13	6,911.50	0.00	0.00	0.00	
13,500.00	90.15	179.918	6,376.27	-7,012.01	-357.98	7,011.50	0.00	0.00	0.00	
13,600.00	90.15	179.918	6,376.01	-7,112.01	-357.84	7,111.49	0.00	0.00	0.00	
13,700.00	90.15	179.918	6,375.75	-7,212.01	-357.69	7,211.49	0.00	0.00	0.00	
13,800.00	90.15	179.918	6,375.49	-7,312.01	-357.55	7,311.49	0.00	0.00	0.00	
13,900.00	90.15	179.918	6,375.23	-7,412.01	-357.41	7,411.49	0.00	0.00	0.00	
14,000.00	90.15	179.918	6,374.97	-7,512.01	-357.26	7,511.49	0.00	0.00	0.00	
14,100.00	90.15	179.918	6,374.71	-7,612.01	-357.12	7,611.49	0.00	0.00	0.00	
14,200.00	90.15	179.918	6,374.45	-7,712.01	-356.98	7,711.49	0.00	0.00	0.00	
14,300.00	90.15	179.918	6,374.19	-7,812.01	-356.83	7,811.49	0.00	0.00	0.00	
14,400.00	90.15	179.918	6,373.93	-7,912.01	-356.69	7,911.49	0.00	0.00	0.00	
14,500.00	90.15	179.918	6,373.67	-8,012.01	-356.54	8,011.49	0.00	0.00	0.00	
14,600.00	90.15	179.918	6,373.41	-8,112.01	-356.40	8,111.49	0.00	0.00	0.00	
14,700.00	90.15	179.918	6,373.15	-8,212.01	-356.26	8,211.49	0.00	0.00	0.00	
14,800.00	90.15	179.918	6,372.89	-8,312.01	-356.11	8,311.49	0.00	0.00	0.00	
14,900.00	90.15	179.918	6,372.63	-8,412.01	-355.97	8,411.49	0.00	0.00	0.00	

Database:	Casper District	Local Co-ordinate Reference:	Well Anschutz State Fed 5-62-27-0362C2
Company:	Bill Barrett Corp.	TVD Reference:	GL 4683' & KB 16' @ 4699.00ft
Project:	Weld County, CO NAD 83	MD Reference:	GL 4683' & KB 16' @ 4699.00ft
Site:	Anschutz State Fed 5-62-27_34 NENW Pad	North Reference:	True
Well:	Anschutz State Fed 5-62-27-0362C2	Survey Calculation Method:	Minimum Curvature
Wellbore:	OH		
Design:	Plan 2		

Planned Survey										
Measured Depth (ft)	Inclination (°)	Azimuth (°)	Vertical Depth (ft)	+N/-S (ft)	+E/-W (ft)	Vertical Section (ft)	Dogleg Rate (°/100ft)	Build Rate (°/100ft)	Turn Rate (°/100ft)	
15,000.00	90.15	179.918	6,372.37	-8,512.01	-355.83	8,511.49	0.00	0.00	0.00	
15,100.00	90.15	179.918	6,372.11	-8,612.01	-355.68	8,611.49	0.00	0.00	0.00	
15,200.00	90.15	179.918	6,371.85	-8,712.01	-355.54	8,711.49	0.00	0.00	0.00	
15,300.00	90.15	179.918	6,371.59	-8,812.01	-355.40	8,811.49	0.00	0.00	0.00	
15,400.00	90.15	179.918	6,371.33	-8,912.01	-355.25	8,911.49	0.00	0.00	0.00	
15,500.00	90.15	179.918	6,371.07	-9,012.01	-355.11	9,011.49	0.00	0.00	0.00	
15,600.00	90.15	179.918	6,370.81	-9,112.01	-354.96	9,111.49	0.00	0.00	0.00	
15,700.00	90.15	179.918	6,370.55	-9,212.01	-354.82	9,211.49	0.00	0.00	0.00	
15,800.00	90.15	179.918	6,370.29	-9,312.00	-354.68	9,311.49	0.00	0.00	0.00	
15,900.00	90.15	179.918	6,370.03	-9,412.00	-354.53	9,411.49	0.00	0.00	0.00	
16,000.00	90.15	179.918	6,369.76	-9,512.00	-354.39	9,511.49	0.00	0.00	0.00	
16,100.00	90.15	179.918	6,369.50	-9,612.00	-354.25	9,611.49	0.00	0.00	0.00	
16,200.00	90.15	179.918	6,369.24	-9,712.00	-354.10	9,711.49	0.00	0.00	0.00	
16,293.71	90.15	179.918	6,369.00	-9,805.71	-353.97	9,805.20	0.00	0.00	0.00	
TD at 16293.71										

Design Targets										
Target Name	Dip Angle (°)	Dip Dir. (°)	TVD (ft)	+N/-S (ft)	+E/-W (ft)	Northing (usft)	Easting (usft)	Latitude		Longitude
- hit/miss target										
- Shape										
5-62-27-0362C2 PBHL	0.00	0.000	6,369.00	-9,805.71	-353.97	1,372,672.37	3,330,464.10	40° 21' 1.159 N		104° 18' 51.451 W
- plan hits target center										
- Point										
5-62-27-0362C2 LP	0.00	0.000	6,394.00	-203.27	-367.76	1,382,273.75	3,330,321.78	40° 22' 36.052 N		104° 18' 51.631 W
- plan hits target center										
- Point										

Plan Annotations					
Measured Depth (ft)	Vertical Depth (ft)	Local Coordinates			
		+N/-S (ft)	+E/-W (ft)	Comment	
800.00	800.00	0.00	0.00	Start Build 2.00	
1,098.34	1,097.80	9.29	-12.43	Start 4126.75 hold at 1098.34 MD	
5,225.09	5,202.20	266.15	-356.02	Start Drop -2.00	
5,523.44	5,500.00	275.44	-368.45	Start 416.54 hold at 5523.44 MD	
5,939.98	5,916.54	275.44	-368.45	Start DLS 12.00 TFO 179.92	
6,691.22	6,394.00	-203.26	-367.76	Start 9602.50 hold at 6691.22 MD	
16,293.71	6,369.00	-9,805.71	-353.97	TD at 16293.71	