

PROJECT DETAILS: Weld County, CO NAD 83

Geodetic System: US State Plane 1983  
 Datum: North American Datum 1983  
 Ellipsoid: GRS 1980  
 Zone: Colorado Northern Zone  
 System Datum: Mean Sea Level  
 Local North: True

Project: Weld County, CO NAD 83  
 Site: Anschutz State Fed 5-62-27\_34 NENW Pad  
 Well: Anschutz State Fed 5-62-27-0362B2  
 Wellbore: OH  
 Design: Plan 2



Azinuths to True North  
 Magnetic North: 8.19°

Magnetic Field  
 Strength: 52538.8nT  
 Dip Angle: 66.96°  
 Date: 8/26/2016  
 Model: BGGM2016

Plan: Plan 2 (Anschutz State Fed 5-62-27-0362B2/OH)

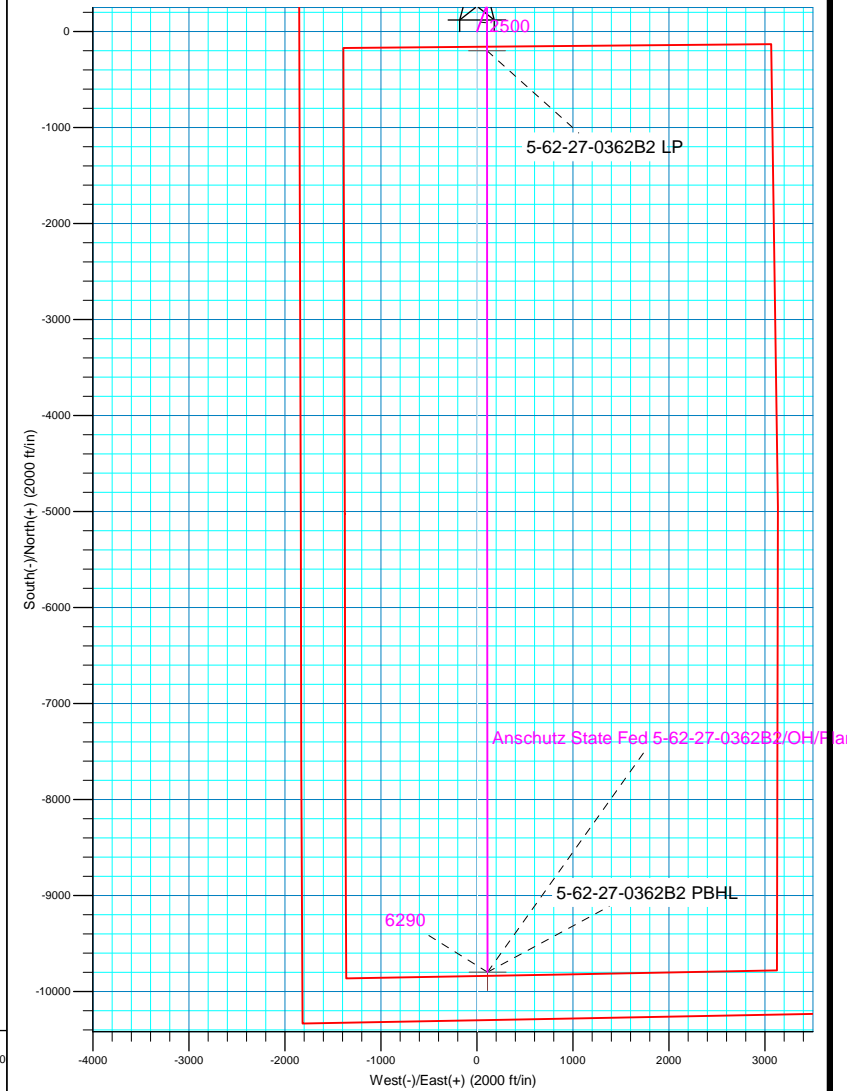
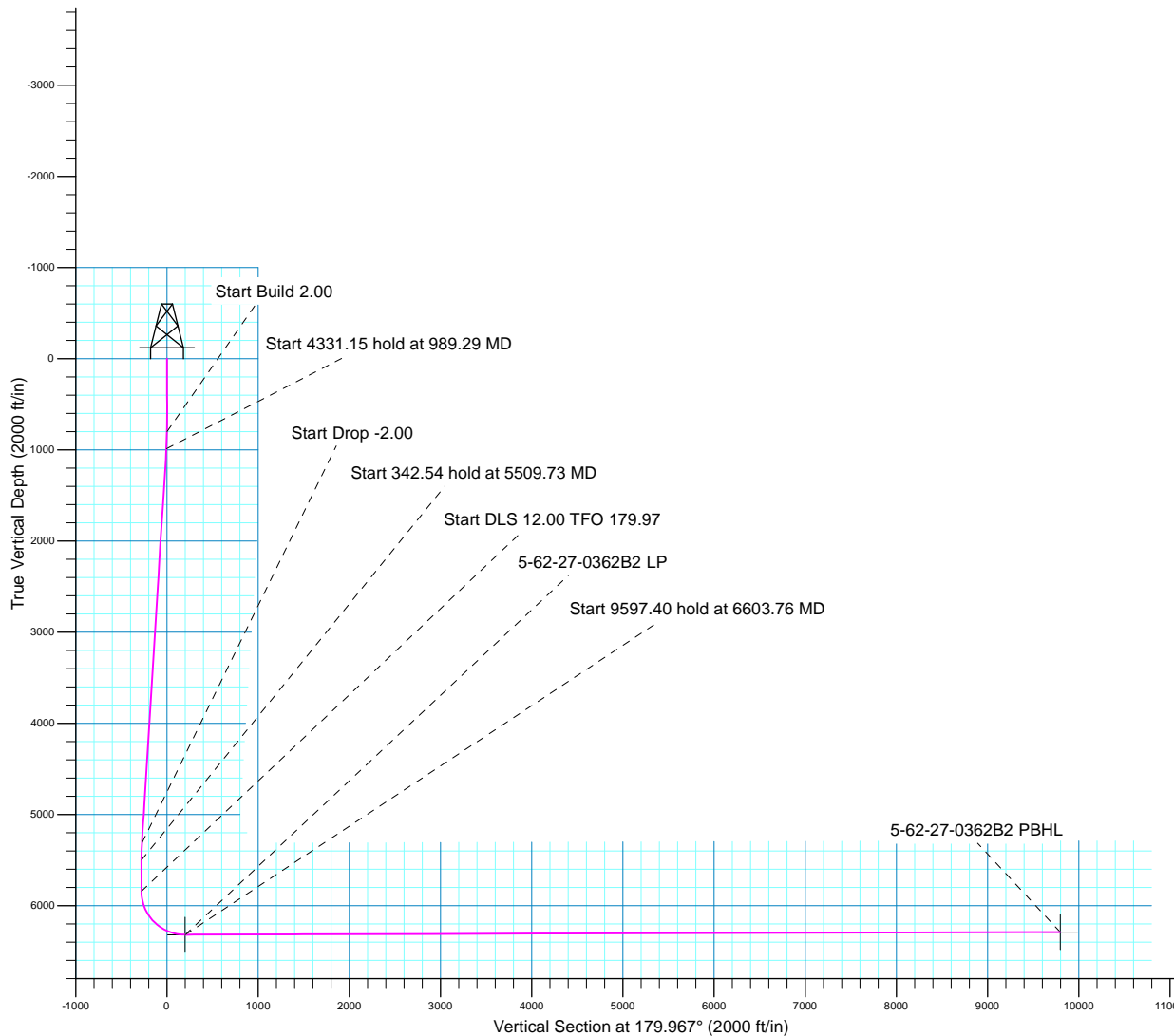
Created By: Seth Burstad Date: 8-26-2016

SECTION DETAILS

MD	Inc	Azi	TVD	+N/-S	+E/-W	Dleg	TFace	VSect
0.00	0.00	0.000	0.00	0.00	0.00	0.00	0.00	0.00
800.00	0.00	0.000	800.00	0.00	0.00	0.00	0.00	0.00
989.29	3.79	20.432	989.15	5.86	2.18	2.00	20.43	-5.86
5320.44	3.79	20.432	5310.85	273.84	102.01	0.00	0.00	-273.78
5509.73	0.00	0.000	5500.00	279.69	104.20	2.00	180.00	-279.63
5852.27	0.00	0.000	5842.54	279.69	104.20	0.00	0.00	-279.63
6603.76	90.18	179.966	6320.00	-199.26	104.48	12.00	179.97	199.32
16201.14	90.18	179.966	6290.00	-9796.60	110.09	0.00	0.00	9796.66

WELL DETAILS: Anschutz State Fed 5-62-27-0362B2

+N/-S	+E/-W	GL 4683' & KB 16' @ 4699.00ft	4683.00	Longitude
Northing	Easting	Latitude		
0.00	0.00	1382482.12	3330702.10	40° 22' 38.060 N 104° 18' 46.681 W





## **Bill Barrett Corp.**

**Weld County, CO NAD 83**

**Anschutz State Fed 5-62-27\_34 NENW Pad**

**Anschutz State Fed 5-62-27-0362B2**

**OH**

**Plan: Plan 2**

## **Standard Planning Report**

**26 August, 2016**



<b>Database:</b>	Casper District	<b>Local Co-ordinate Reference:</b>	Well Anschutz State Fed 5-62-27-0362B2
<b>Company:</b>	Bill Barrett Corp.	<b>TVD Reference:</b>	GL 4683' & KB 16' @ 4699.00ft
<b>Project:</b>	Weld County, CO NAD 83	<b>MD Reference:</b>	GL 4683' & KB 16' @ 4699.00ft
<b>Site:</b>	Anschutz State Fed 5-62-27_34 NENW Pad	<b>North Reference:</b>	True
<b>Well:</b>	Anschutz State Fed 5-62-27-0362B2	<b>Survey Calculation Method:</b>	Minimum Curvature
<b>Wellbore:</b>	OH		
<b>Design:</b>	Plan 2		

<b>Project</b>	Weld County, CO NAD 83		
<b>Map System:</b>	US State Plane 1983	<b>System Datum:</b>	Mean Sea Level
<b>Geo Datum:</b>	North American Datum 1983		
<b>Map Zone:</b>	Colorado Northern Zone		

Site						Anschutz State Fed 5-62-27_34 NENW Pad, Site Center : 5-62-27-0461C2					
Site Position:		Northing:		1,382,482.33 usft		Latitude:		40° 22' 38.060 N			
From:		Lat/Long		Easting:		3,330,716.87 usft		Longitude:		104° 18' 46.490 W	
Position Uncertainty:		0.00 ft		Slot Radius:		13.200 in		Grid Convergence:		0.77 °	

Well	Anschutz State Fed 5-62-27-0362B2, 300' FNL 1850' FWL Sec 27 T5N R62W					
Well Position	+N/-S	-0.02 ft	Northing:	1,382,482.11 usft	Latitude:	40° 22' 38.060 N
	+E/-W	-14.77 ft	Easting:	3,330,702.11 usft	Longitude:	104° 18' 46.681 W
Position Uncertainty		0.00 ft	Wellhead Elevation:	0.00 ft	Ground Level:	4,683.00 ft

<b>Wellbore</b>	OH					
<b>Magnetics</b>	<b>Model Name</b>	<b>Sample Date</b>	<b>Declination (°)</b>	<b>Dip Angle (°)</b>	<b>Field Strength (nT)</b>	
	BGGM2015	11/10/2015	8.26	67.02	52,634	
	BGGM2016	8/26/2016	8.19	66.96	52,539	

<b>Design</b>	Plan 2				
<b>Audit Notes:</b>					
<b>Version:</b>	<b>Phase:</b>	PLAN	<b>Tie On Depth:</b>	0.00	
<b>Vertical Section:</b>	<b>Depth From (TVD) (ft)</b>	<b>+N/-S (ft)</b>	<b>+E/-W (ft)</b>	<b>Direction (°)</b>	
	0.00	0.00	0.00	179.967	

<b>Plan Sections</b>										
<b>Measured Depth (ft)</b>	<b>Inclination (°)</b>	<b>Azimuth (°)</b>	<b>Vertical Depth (ft)</b>	<b>+N/-S (ft)</b>	<b>+E/-W (ft)</b>	<b>Dogleg Rate (°/100ft)</b>	<b>Build Rate (°/100ft)</b>	<b>Turn Rate (°/100ft)</b>	<b>TFO (°)</b>	<b>Target</b>
0.00	0.00	0.000	0.00	0.00	0.00	0.00	0.00	0.00	0.00	
800.00	0.00	0.000	800.00	0.00	0.00	0.00	0.00	0.00	0.00	
989.29	3.79	20.432	989.15	5.86	2.18	2.00	2.00	0.00	20.43	
5,320.44	3.79	20.432	5,310.85	273.84	102.01	0.00	0.00	0.00	0.00	
5,509.73	0.00	0.000	5,500.00	279.69	104.20	2.00	-2.00	0.00	180.00	
5,852.27	0.00	0.000	5,842.54	279.69	104.20	0.00	0.00	0.00	0.00	
6,603.76	90.18	179.966	6,320.00	-199.26	104.48	12.00	12.00	23.95	179.97	
16,201.14	90.18	179.966	6,290.00	-9,796.60	110.09	0.00	0.00	0.00	0.00	5-62-27-0362B2 PBH

<b>Database:</b>	Casper District	<b>Local Co-ordinate Reference:</b>	Well Anschutz State Fed 5-62-27-0362B2
<b>Company:</b>	Bill Barrett Corp.	<b>TVD Reference:</b>	GL 4683' & KB 16' @ 4699.00ft
<b>Project:</b>	Weld County, CO NAD 83	<b>MD Reference:</b>	GL 4683' & KB 16' @ 4699.00ft
<b>Site:</b>	Anschutz State Fed 5-62-27_34 NENW Pad	<b>North Reference:</b>	True
<b>Well:</b>	Anschutz State Fed 5-62-27-0362B2	<b>Survey Calculation Method:</b>	Minimum Curvature
<b>Wellbore:</b>	OH		
<b>Design:</b>	Plan 2		

Planned Survey									
Measured Depth (ft)	Inclination (°)	Azimuth (°)	Vertical Depth (ft)	+N/-S (ft)	+E/-W (ft)	Vertical Section (ft)	Dogleg Rate (°/100ft)	Build Rate (°/100ft)	Turn Rate (°/100ft)
0.00	0.00	0.000	0.00	0.00	0.00	0.00	0.00	0.00	0.00
100.00	0.00	0.000	100.00	0.00	0.00	0.00	0.00	0.00	0.00
200.00	0.00	0.000	200.00	0.00	0.00	0.00	0.00	0.00	0.00
300.00	0.00	0.000	300.00	0.00	0.00	0.00	0.00	0.00	0.00
400.00	0.00	0.000	400.00	0.00	0.00	0.00	0.00	0.00	0.00
500.00	0.00	0.000	500.00	0.00	0.00	0.00	0.00	0.00	0.00
600.00	0.00	0.000	600.00	0.00	0.00	0.00	0.00	0.00	0.00
700.00	0.00	0.000	700.00	0.00	0.00	0.00	0.00	0.00	0.00
800.00	0.00	0.000	800.00	0.00	0.00	0.00	0.00	0.00	0.00
<b>Start Build 2.00</b>									
900.00	2.00	20.432	899.98	1.64	0.61	-1.64	2.00	2.00	0.00
989.29	3.79	20.432	989.15	5.86	2.18	-5.86	2.00	2.00	0.00
<b>Start 4331.15 hold at 989.29 MD</b>									
1,000.00	3.79	20.432	999.84	6.52	2.43	-6.52	0.00	0.00	0.00
1,100.00	3.79	20.432	1,099.62	12.71	4.73	-12.71	0.00	0.00	0.00
1,200.00	3.79	20.432	1,199.40	18.90	7.04	-18.89	0.00	0.00	0.00
1,300.00	3.79	20.432	1,299.18	25.08	9.34	-25.08	0.00	0.00	0.00
1,400.00	3.79	20.432	1,398.97	31.27	11.65	-31.26	0.00	0.00	0.00
1,500.00	3.79	20.432	1,498.75	37.46	13.95	-37.45	0.00	0.00	0.00
1,600.00	3.79	20.432	1,598.53	43.64	16.26	-43.63	0.00	0.00	0.00
1,700.00	3.79	20.432	1,698.31	49.83	18.56	-49.82	0.00	0.00	0.00
1,800.00	3.79	20.432	1,798.09	56.02	20.87	-56.01	0.00	0.00	0.00
1,900.00	3.79	20.432	1,897.88	62.21	23.17	-62.19	0.00	0.00	0.00
2,000.00	3.79	20.432	1,997.66	68.39	25.48	-68.38	0.00	0.00	0.00
2,100.00	3.79	20.432	2,097.44	74.58	27.78	-74.56	0.00	0.00	0.00
2,200.00	3.79	20.432	2,197.22	80.77	30.09	-80.75	0.00	0.00	0.00
2,300.00	3.79	20.432	2,297.00	86.95	32.39	-86.94	0.00	0.00	0.00
2,400.00	3.79	20.432	2,396.78	93.14	34.70	-93.12	0.00	0.00	0.00
2,500.00	3.79	20.432	2,496.57	99.33	37.00	-99.31	0.00	0.00	0.00
2,600.00	3.79	20.432	2,596.35	105.52	39.31	-105.49	0.00	0.00	0.00
2,700.00	3.79	20.432	2,696.13	111.70	41.61	-111.68	0.00	0.00	0.00
2,800.00	3.79	20.432	2,795.91	117.89	43.92	-117.87	0.00	0.00	0.00
2,900.00	3.79	20.432	2,895.69	124.08	46.22	-124.05	0.00	0.00	0.00
3,000.00	3.79	20.432	2,995.47	130.27	48.53	-130.24	0.00	0.00	0.00
3,100.00	3.79	20.432	3,095.26	136.45	50.83	-136.42	0.00	0.00	0.00
3,200.00	3.79	20.432	3,195.04	142.64	53.14	-142.61	0.00	0.00	0.00
3,300.00	3.79	20.432	3,294.82	148.83	55.44	-148.80	0.00	0.00	0.00
3,400.00	3.79	20.432	3,394.60	155.01	57.75	-154.98	0.00	0.00	0.00
3,500.00	3.79	20.432	3,494.38	161.20	60.05	-161.17	0.00	0.00	0.00
3,600.00	3.79	20.432	3,594.17	167.39	62.36	-167.35	0.00	0.00	0.00
3,700.00	3.79	20.432	3,693.95	173.58	64.66	-173.54	0.00	0.00	0.00
3,800.00	3.79	20.432	3,793.73	179.76	66.97	-179.72	0.00	0.00	0.00
3,900.00	3.79	20.432	3,893.51	185.95	69.27	-185.91	0.00	0.00	0.00
4,000.00	3.79	20.432	3,993.29	192.14	71.58	-192.10	0.00	0.00	0.00
4,100.00	3.79	20.432	4,093.07	198.32	73.88	-198.28	0.00	0.00	0.00
4,200.00	3.79	20.432	4,192.86	204.51	76.19	-204.47	0.00	0.00	0.00
4,300.00	3.79	20.432	4,292.64	210.70	78.49	-210.65	0.00	0.00	0.00
4,400.00	3.79	20.432	4,392.42	216.89	80.80	-216.84	0.00	0.00	0.00
4,500.00	3.79	20.432	4,492.20	223.07	83.10	-223.03	0.00	0.00	0.00
4,600.00	3.79	20.432	4,591.98	229.26	85.41	-229.21	0.00	0.00	0.00
4,700.00	3.79	20.432	4,691.77	235.45	87.71	-235.40	0.00	0.00	0.00
4,800.00	3.79	20.432	4,791.55	241.64	90.02	-241.58	0.00	0.00	0.00
4,900.00	3.79	20.432	4,891.33	247.82	92.32	-247.77	0.00	0.00	0.00
5,000.00	3.79	20.432	4,991.11	254.01	94.63	-253.96	0.00	0.00	0.00

<b>Database:</b>	Casper District	<b>Local Co-ordinate Reference:</b>	Well Anschutz State Fed 5-62-27-0362B2
<b>Company:</b>	Bill Barrett Corp.	<b>TVD Reference:</b>	GL 4683' & KB 16' @ 4699.00ft
<b>Project:</b>	Weld County, CO NAD 83	<b>MD Reference:</b>	GL 4683' & KB 16' @ 4699.00ft
<b>Site:</b>	Anschutz State Fed 5-62-27_34 NENW Pad	<b>North Reference:</b>	True
<b>Well:</b>	Anschutz State Fed 5-62-27-0362B2	<b>Survey Calculation Method:</b>	Minimum Curvature
<b>Wellbore:</b>	OH		
<b>Design:</b>	Plan 2		

Planned Survey									
Measured Depth (ft)	Inclination (°)	Azimuth (°)	Vertical Depth (ft)	+N/-S (ft)	+E/-W (ft)	Vertical Section (ft)	Dogleg Rate (°/100ft)	Build Rate (°/100ft)	Turn Rate (°/100ft)
5,100.00	3.79	20.432	5,090.89	260.20	96.93	-260.14	0.00	0.00	0.00
5,200.00	3.79	20.432	5,190.67	266.38	99.24	-266.33	0.00	0.00	0.00
5,300.00	3.79	20.432	5,290.46	272.57	101.54	-272.51	0.00	0.00	0.00
5,320.44	3.79	20.432	5,310.85	273.84	102.01	-273.78	0.00	0.00	0.00
<b>Start Drop -2.00</b>									
5,400.00	2.19	20.432	5,390.30	277.73	103.46	-277.67	2.00	-2.00	0.00
5,500.00	0.19	20.432	5,490.27	279.68	104.19	-279.62	2.00	-2.00	0.00
5,509.73	0.00	0.000	5,500.00	279.69	104.20	-279.63	2.00	-2.00	0.00
<b>Start 342.54 hold at 5509.73 MD</b>									
5,600.00	0.00	0.000	5,590.27	279.69	104.20	-279.63	0.00	0.00	0.00
5,700.00	0.00	0.000	5,690.27	279.69	104.20	-279.63	0.00	0.00	0.00
5,800.00	0.00	0.000	5,790.27	279.69	104.20	-279.63	0.00	0.00	0.00
5,852.27	0.00	0.000	5,842.54	279.69	104.20	-279.63	0.00	0.00	0.00
<b>Start DLS 12.00 TFO 179.97</b>									
5,900.00	5.73	179.966	5,890.19	277.31	104.20	-277.25	12.00	12.00	0.00
6,000.00	17.73	179.966	5,987.93	257.02	104.21	-256.96	12.00	12.00	0.00
6,100.00	29.73	179.966	6,079.31	216.85	104.23	-216.79	12.00	12.00	0.00
6,200.00	41.73	179.966	6,160.34	158.57	104.27	-158.51	12.00	12.00	0.00
6,300.00	53.73	179.966	6,227.48	84.71	104.31	-84.65	12.00	12.00	0.00
6,400.00	65.73	179.966	6,277.80	-1.50	104.36	1.56	12.00	12.00	0.00
6,500.00	77.73	179.966	6,309.09	-96.28	104.42	96.34	12.00	12.00	0.00
6,600.00	89.73	179.966	6,320.00	-195.50	104.47	195.56	12.00	12.00	0.00
6,603.76	90.18	179.966	6,320.00	-199.26	104.48	199.32	12.00	12.00	0.00
<b>Start 9597.40 hold at 6603.76 MD</b>									
6,700.00	90.18	179.966	6,319.70	-295.50	104.53	295.56	0.00	0.00	0.00
6,800.00	90.18	179.966	6,319.39	-395.50	104.59	395.56	0.00	0.00	0.00
6,900.00	90.18	179.966	6,319.08	-495.50	104.65	495.56	0.00	0.00	0.00
7,000.00	90.18	179.966	6,318.76	-595.50	104.71	595.56	0.00	0.00	0.00
7,100.00	90.18	179.966	6,318.45	-695.50	104.77	695.56	0.00	0.00	0.00
7,200.00	90.18	179.966	6,318.14	-795.50	104.83	795.56	0.00	0.00	0.00
7,300.00	90.18	179.966	6,317.83	-895.50	104.88	895.56	0.00	0.00	0.00
7,400.00	90.18	179.966	6,317.51	-995.50	104.94	995.56	0.00	0.00	0.00
7,500.00	90.18	179.966	6,317.20	-1,095.50	105.00	1,095.56	0.00	0.00	0.00
7,600.00	90.18	179.966	6,316.89	-1,195.50	105.06	1,195.56	0.00	0.00	0.00
7,700.00	90.18	179.966	6,316.58	-1,295.50	105.12	1,295.56	0.00	0.00	0.00
7,800.00	90.18	179.966	6,316.26	-1,395.50	105.18	1,395.56	0.00	0.00	0.00
7,900.00	90.18	179.966	6,315.95	-1,495.50	105.23	1,495.56	0.00	0.00	0.00
8,000.00	90.18	179.966	6,315.64	-1,595.50	105.29	1,595.56	0.00	0.00	0.00
8,100.00	90.18	179.966	6,315.33	-1,695.50	105.35	1,695.56	0.00	0.00	0.00
8,200.00	90.18	179.966	6,315.01	-1,795.50	105.41	1,795.56	0.00	0.00	0.00
8,300.00	90.18	179.966	6,314.70	-1,895.50	105.47	1,895.56	0.00	0.00	0.00
8,400.00	90.18	179.966	6,314.39	-1,995.50	105.53	1,995.56	0.00	0.00	0.00
8,500.00	90.18	179.966	6,314.07	-2,095.49	105.59	2,095.56	0.00	0.00	0.00
8,600.00	90.18	179.966	6,313.76	-2,195.49	105.64	2,195.55	0.00	0.00	0.00
8,700.00	90.18	179.966	6,313.45	-2,295.49	105.70	2,295.55	0.00	0.00	0.00
8,800.00	90.18	179.966	6,313.14	-2,395.49	105.76	2,395.55	0.00	0.00	0.00
8,900.00	90.18	179.966	6,312.82	-2,495.49	105.82	2,495.55	0.00	0.00	0.00
9,000.00	90.18	179.966	6,312.51	-2,595.49	105.88	2,595.55	0.00	0.00	0.00
9,100.00	90.18	179.966	6,312.20	-2,695.49	105.94	2,695.55	0.00	0.00	0.00
9,200.00	90.18	179.966	6,311.89	-2,795.49	106.00	2,795.55	0.00	0.00	0.00
9,300.00	90.18	179.966	6,311.57	-2,895.49	106.05	2,895.55	0.00	0.00	0.00
9,400.00	90.18	179.966	6,311.26	-2,995.49	106.11	2,995.55	0.00	0.00	0.00
9,500.00	90.18	179.966	6,310.95	-3,095.49	106.17	3,095.55	0.00	0.00	0.00

<b>Database:</b>	Casper District	<b>Local Co-ordinate Reference:</b>	Well Anschutz State Fed 5-62-27-0362B2
<b>Company:</b>	Bill Barrett Corp.	<b>TVD Reference:</b>	GL 4683' & KB 16' @ 4699.00ft
<b>Project:</b>	Weld County, CO NAD 83	<b>MD Reference:</b>	GL 4683' & KB 16' @ 4699.00ft
<b>Site:</b>	Anschutz State Fed 5-62-27_34 NENW Pad	<b>North Reference:</b>	True
<b>Well:</b>	Anschutz State Fed 5-62-27-0362B2	<b>Survey Calculation Method:</b>	Minimum Curvature
<b>Wellbore:</b>	OH		
<b>Design:</b>	Plan 2		

Planned Survey									
Measured Depth (ft)	Inclination (°)	Azimuth (°)	Vertical Depth (ft)	+N/-S (ft)	+E/-W (ft)	Vertical Section (ft)	Dogleg Rate (°/100ft)	Build Rate (°/100ft)	Turn Rate (°/100ft)
9,600.00	90.18	179.966	6,310.64	-3,195.49	106.23	3,195.55	0.00	0.00	0.00
9,700.00	90.18	179.966	6,310.32	-3,295.49	106.29	3,295.55	0.00	0.00	0.00
9,800.00	90.18	179.966	6,310.01	-3,395.49	106.35	3,395.55	0.00	0.00	0.00
9,900.00	90.18	179.966	6,309.70	-3,495.49	106.41	3,495.55	0.00	0.00	0.00
10,000.00	90.18	179.966	6,309.39	-3,595.49	106.46	3,595.55	0.00	0.00	0.00
10,100.00	90.18	179.966	6,309.07	-3,695.49	106.52	3,695.55	0.00	0.00	0.00
10,200.00	90.18	179.966	6,308.76	-3,795.49	106.58	3,795.55	0.00	0.00	0.00
10,300.00	90.18	179.966	6,308.45	-3,895.49	106.64	3,895.55	0.00	0.00	0.00
10,400.00	90.18	179.966	6,308.14	-3,995.49	106.70	3,995.55	0.00	0.00	0.00
10,500.00	90.18	179.966	6,307.82	-4,095.48	106.76	4,095.55	0.00	0.00	0.00
10,600.00	90.18	179.966	6,307.51	-4,195.48	106.81	4,195.54	0.00	0.00	0.00
10,700.00	90.18	179.966	6,307.20	-4,295.48	106.87	4,295.54	0.00	0.00	0.00
10,800.00	90.18	179.966	6,306.88	-4,395.48	106.93	4,395.54	0.00	0.00	0.00
10,900.00	90.18	179.966	6,306.57	-4,495.48	106.99	4,495.54	0.00	0.00	0.00
11,000.00	90.18	179.966	6,306.26	-4,595.48	107.05	4,595.54	0.00	0.00	0.00
11,100.00	90.18	179.966	6,305.95	-4,695.48	107.11	4,695.54	0.00	0.00	0.00
11,200.00	90.18	179.966	6,305.63	-4,795.48	107.17	4,795.54	0.00	0.00	0.00
11,300.00	90.18	179.966	6,305.32	-4,895.48	107.22	4,895.54	0.00	0.00	0.00
11,400.00	90.18	179.966	6,305.01	-4,995.48	107.28	4,995.54	0.00	0.00	0.00
11,500.00	90.18	179.966	6,304.70	-5,095.48	107.34	5,095.54	0.00	0.00	0.00
11,600.00	90.18	179.966	6,304.38	-5,195.48	107.40	5,195.54	0.00	0.00	0.00
11,700.00	90.18	179.966	6,304.07	-5,295.48	107.46	5,295.54	0.00	0.00	0.00
11,800.00	90.18	179.966	6,303.76	-5,395.48	107.52	5,395.54	0.00	0.00	0.00
11,900.00	90.18	179.966	6,303.45	-5,495.48	107.58	5,495.54	0.00	0.00	0.00
12,000.00	90.18	179.966	6,303.13	-5,595.48	107.63	5,595.54	0.00	0.00	0.00
12,100.00	90.18	179.966	6,302.82	-5,695.48	107.69	5,695.54	0.00	0.00	0.00
12,200.00	90.18	179.966	6,302.51	-5,795.48	107.75	5,795.54	0.00	0.00	0.00
12,300.00	90.18	179.966	6,302.20	-5,895.48	107.81	5,895.54	0.00	0.00	0.00
12,400.00	90.18	179.966	6,301.88	-5,995.47	107.87	5,995.54	0.00	0.00	0.00
12,500.00	90.18	179.966	6,301.57	-6,095.47	107.93	6,095.54	0.00	0.00	0.00
12,600.00	90.18	179.966	6,301.26	-6,195.47	107.99	6,195.54	0.00	0.00	0.00
12,700.00	90.18	179.966	6,300.95	-6,295.47	108.04	6,295.53	0.00	0.00	0.00
12,800.00	90.18	179.966	6,300.63	-6,395.47	108.10	6,395.53	0.00	0.00	0.00
12,900.00	90.18	179.966	6,300.32	-6,495.47	108.16	6,495.53	0.00	0.00	0.00
13,000.00	90.18	179.966	6,300.01	-6,595.47	108.22	6,595.53	0.00	0.00	0.00
13,100.00	90.18	179.966	6,299.69	-6,695.47	108.28	6,695.53	0.00	0.00	0.00
13,200.00	90.18	179.966	6,299.38	-6,795.47	108.34	6,795.53	0.00	0.00	0.00
13,300.00	90.18	179.966	6,299.07	-6,895.47	108.39	6,895.53	0.00	0.00	0.00
13,400.00	90.18	179.966	6,298.76	-6,995.47	108.45	6,995.53	0.00	0.00	0.00
13,500.00	90.18	179.966	6,298.44	-7,095.47	108.51	7,095.53	0.00	0.00	0.00
13,600.00	90.18	179.966	6,298.13	-7,195.47	108.57	7,195.53	0.00	0.00	0.00
13,700.00	90.18	179.966	6,297.82	-7,295.47	108.63	7,295.53	0.00	0.00	0.00
13,800.00	90.18	179.966	6,297.51	-7,395.47	108.69	7,395.53	0.00	0.00	0.00
13,900.00	90.18	179.966	6,297.19	-7,495.47	108.75	7,495.53	0.00	0.00	0.00
14,000.00	90.18	179.966	6,296.88	-7,595.47	108.80	7,595.53	0.00	0.00	0.00
14,100.00	90.18	179.966	6,296.57	-7,695.47	108.86	7,695.53	0.00	0.00	0.00
14,200.00	90.18	179.966	6,296.26	-7,795.47	108.92	7,795.53	0.00	0.00	0.00
14,300.00	90.18	179.966	6,295.94	-7,895.47	108.98	7,895.53	0.00	0.00	0.00
14,400.00	90.18	179.966	6,295.63	-7,995.46	109.04	7,995.53	0.00	0.00	0.00
14,500.00	90.18	179.966	6,295.32	-8,095.46	109.10	8,095.53	0.00	0.00	0.00
14,600.00	90.18	179.966	6,295.01	-8,195.46	109.16	8,195.53	0.00	0.00	0.00
14,700.00	90.18	179.966	6,294.69	-8,295.46	109.21	8,295.52	0.00	0.00	0.00
14,800.00	90.18	179.966	6,294.38	-8,395.46	109.27	8,395.52	0.00	0.00	0.00
14,900.00	90.18	179.966	6,294.07	-8,495.46	109.33	8,495.52	0.00	0.00	0.00

<b>Database:</b>	Casper District	<b>Local Co-ordinate Reference:</b>	Well Anschutz State Fed 5-62-27-0362B2
<b>Company:</b>	Bill Barrett Corp.	<b>TVD Reference:</b>	GL 4683' & KB 16' @ 4699.00ft
<b>Project:</b>	Weld County, CO NAD 83	<b>MD Reference:</b>	GL 4683' & KB 16' @ 4699.00ft
<b>Site:</b>	Anschutz State Fed 5-62-27_34 NENW Pad	<b>North Reference:</b>	True
<b>Well:</b>	Anschutz State Fed 5-62-27-0362B2	<b>Survey Calculation Method:</b>	Minimum Curvature
<b>Wellbore:</b>	OH		
<b>Design:</b>	Plan 2		

Planned Survey									
Measured Depth (ft)	Inclination (°)	Azimuth (°)	Vertical Depth (ft)	+N/-S (ft)	+E/-W (ft)	Vertical Section (ft)	Dogleg Rate (°/100ft)	Build Rate (°/100ft)	Turn Rate (°/100ft)
15,000.00	90.18	179.966	6,293.76	-8,595.46	109.39	8,595.52	0.00	0.00	0.00
15,100.00	90.18	179.966	6,293.44	-8,695.46	109.45	8,695.52	0.00	0.00	0.00
15,200.00	90.18	179.966	6,293.13	-8,795.46	109.51	8,795.52	0.00	0.00	0.00
15,300.00	90.18	179.966	6,292.82	-8,895.46	109.57	8,895.52	0.00	0.00	0.00
15,400.00	90.18	179.966	6,292.50	-8,995.46	109.62	8,995.52	0.00	0.00	0.00
15,500.00	90.18	179.966	6,292.19	-9,095.46	109.68	9,095.52	0.00	0.00	0.00
15,600.00	90.18	179.966	6,291.88	-9,195.46	109.74	9,195.52	0.00	0.00	0.00
15,700.00	90.18	179.966	6,291.57	-9,295.46	109.80	9,295.52	0.00	0.00	0.00
15,800.00	90.18	179.966	6,291.25	-9,395.46	109.86	9,395.52	0.00	0.00	0.00
15,900.00	90.18	179.966	6,290.94	-9,495.46	109.92	9,495.52	0.00	0.00	0.00
16,000.00	90.18	179.966	6,290.63	-9,595.46	109.97	9,595.52	0.00	0.00	0.00
16,100.00	90.18	179.966	6,290.32	-9,695.46	110.03	9,695.52	0.00	0.00	0.00
16,200.00	90.18	179.966	6,290.00	-9,795.46	110.09	9,795.52	0.00	0.00	0.00
16,201.14	90.18	179.966	6,290.00	-9,796.60	110.09	9,796.66	0.00	0.00	0.00
TD at 16201.16									

Design Targets									
Target Name	Dip Angle (°)	Dip Dir. (°)	TVD (ft)	+N/-S (ft)	+E/-W (ft)	Northing (usft)	Easting (usft)	Latitude	Longitude
- hit/miss target									
- Shape									
5-62-27-0362B2 PBHL	0.00	0.000	6,290.00	-9,796.60	110.09	1,372,687.89	3,330,943.33	40° 21' 1.249 N	104° 18' 45.259 W
- plan hits target center									
- Point									
5-62-27-0362B2 LP	0.00	0.000	6,320.00	-199.25	104.48	1,382,284.28	3,330,809.24	40° 22' 36.091 N	104° 18' 45.331 W
- plan hits target center									
- Point									

Plan Annotations				
Measured Depth (ft)	Vertical Depth (ft)	Local Coordinates		Comment
		+N/-S (ft)	+E/-W (ft)	
800.00	800.00	0.00	0.00	Start Build 2.00
989.29	989.15	5.86	2.18	Start 4331.15 hold at 989.29 MD
5,320.44	5,310.85	273.84	102.01	Start Drop -2.00
5,509.73	5,500.00	279.69	104.20	Start 342.54 hold at 5509.73 MD
5,852.27	5,842.54	279.69	104.20	Start DLS 12.00 TFO 179.97
6,603.76	6,320.00	-199.26	104.48	Start 9597.40 hold at 6603.76 MD
16,201.14	6,290.00	-9,796.60	110.09	TD at 16201.16