

PROJECT DETAILS: Weld County, CO NAD 83

Geodetic System: US State Plane 1983
 Datum: North American Datum 1983
 Ellipsoid: GRS 1980
 Zone: Colorado Northern Zone
 System Datum: Mean Sea Level
 Local North: True

Project: Weld County, CO NAD 83
 Site: Anschutz State 5-62-27_34 SWSE 22 Pad
 Well: Anschutz State Fed 5-62-27-0659B2
 Wellbore: OH
 Design: Plan 2



Azinuths to True North
 Magnetic North: 8.19°

Magnetic Field
 Strength: 52540.1nT
 Dip Angle: 66.96°
 Date: 8/26/2016
 Model: BGGM2016

Plan: Plan 2 (Anschutz State Fed 5-62-27-0659B2/OH)

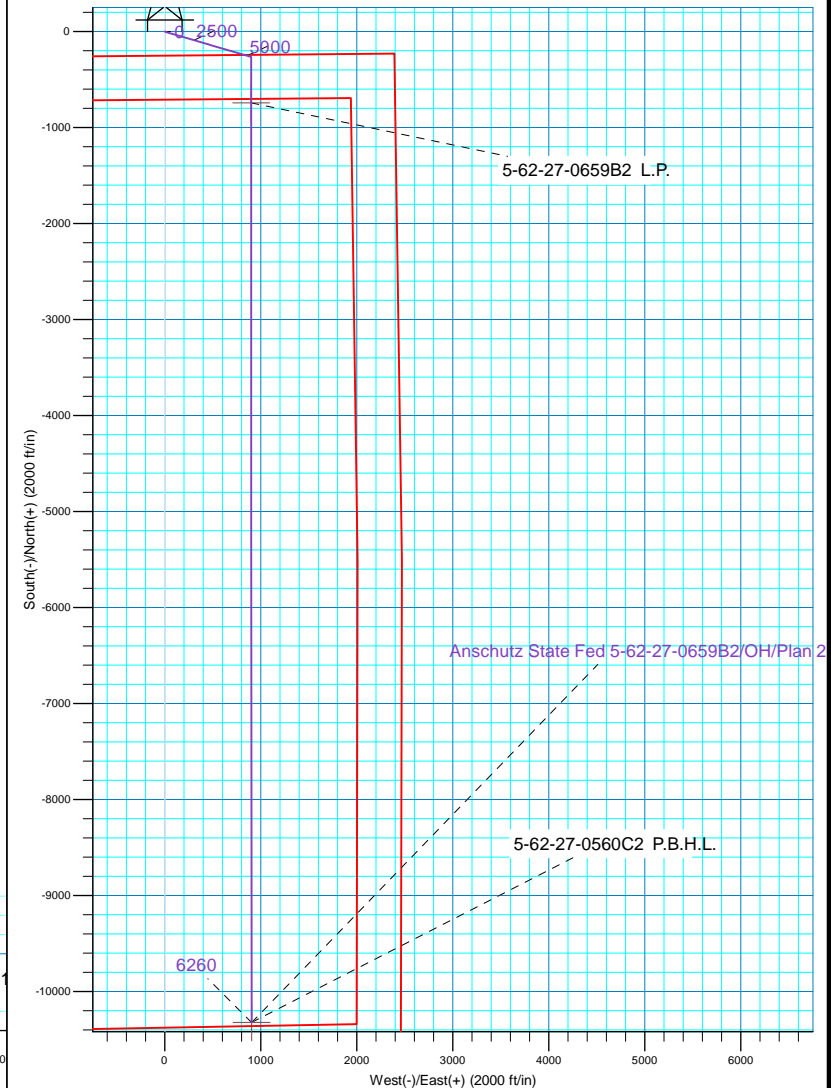
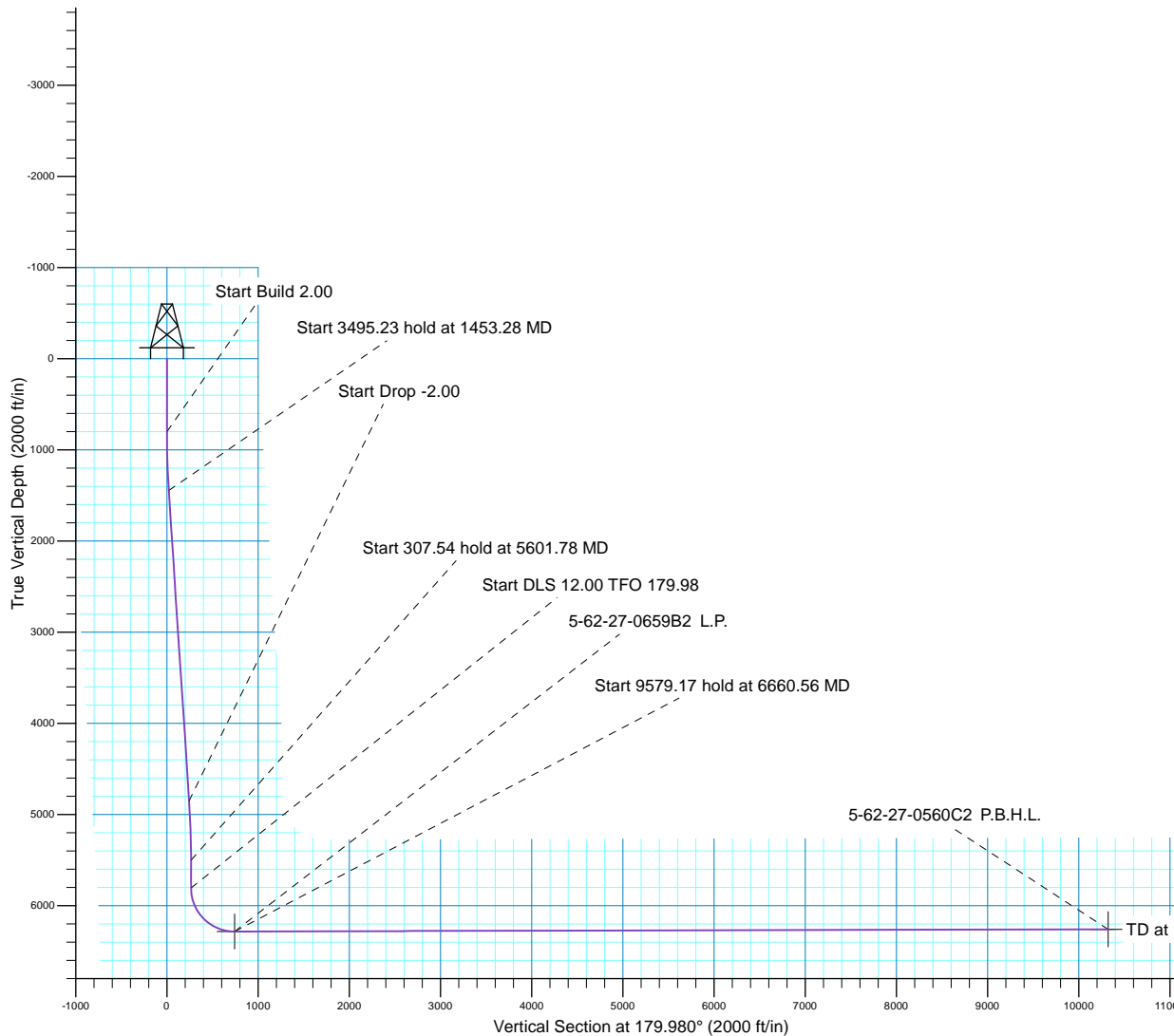
Created By: Seth Burstad Date: 8-26-2016

SECTION DETAILS

MD	Inc	Azi	TVD	+N/-S	+E/-W	Dleg	TFace	VSect
0.00	0.00	0.000	0.00	0.00	0.00	0.00	0.00	0.00
800.00	0.00	0.000	800.00	0.00	0.00	0.00	0.00	0.00
1453.28	13.07	106.342	1447.63	-20.87	71.17	2.00	106.34	20.89
4948.50	13.07	106.342	4852.37	-243.19	829.39	0.00	0.00	243.48
5601.78	0.00	0.000	5500.00	-264.06	900.56	2.00	180.00	264.37
5909.32	0.00	0.000	5807.54	-264.06	900.56	0.00	0.00	264.37
6660.56	90.15	179.980	6285.00	-742.77	900.73	12.00	179.98	743.09
16239.73	90.15	179.980	6260.00	-10321.91	904.15	0.00	0.00	10322.22

WELL DETAILS: Anschutz State Fed 5-62-27-0659B2

		GL 4701' & KB 16' @ 4717.00ft		4701.00	Longitude
+N/-S	+E/-W	Northing	Easting	Latitude	
0.00	0.00	1383057.82	3331820.59	40° 22' 43.601 N	104° 18' 32.130 W





Bill Barrett Corp.

Weld County, CO NAD 83
Anschutz State 5-62-27_34 SWSE 22 Pad
Anschutz State Fed 5-62-27-0659B2

OH

Plan: Plan 2

Standard Planning Report

26 August, 2016



Database:	Casper District	Local Co-ordinate Reference:	Well Anschutz State Fed 5-62-27-0659B2
Company:	Bill Barrett Corp.	TVD Reference:	GL 4701' & KB 16' @ 4717.00ft
Project:	Weld County, CO NAD 83	MD Reference:	GL 4701' & KB 16' @ 4717.00ft
Site:	Anshutz State 5-62-27_34 SWSE 22 Pad	North Reference:	True
Well:	Anschutz State Fed 5-62-27-0659B2	Survey Calculation Method:	Minimum Curvature
Wellbore:	OH		
Design:	Plan 2		

Project	Weld County, CO NAD 83		
Map System:	US State Plane 1983	System Datum:	Mean Sea Level
Geo Datum:	North American Datum 1983		
Map Zone:	Colorado Northern Zone		

Site						Anshutz State 5-62-27_34 SWSE 22 Pad, Site Center : 5-62-27-0659C2					
Site Position:				Northing:		1,383,057.83 usft		Latitude:		40° 22' 43.601 N	
From:		Lat/Long		Easting:		3,331,820.59 usft		Longitude:		104° 18' 32.130 W	
Position Uncertainty:		0.00 ft		Slot Radius:		13.200 in		Grid Convergence:		0.77 °	

Well	Anschutz State Fed 5-62-27-0659B2, 250' FSL 2400' FEL Sec 22 T5N R62W					
Well Position	+N/-S	-0.01 ft	Northing:	1,383,057.82 usft	Latitude:	40° 22' 43.601 N
	+E/-W	0.00 ft	Easting:	3,331,820.59 usft	Longitude:	104° 18' 32.130 W
Position Uncertainty		0.00 ft	Wellhead Elevation:	0.00 ft	Ground Level:	4,701.00 ft

Wellbore	OH				
Magnetics	Model Name	Sample Date	Declination (°)	Dip Angle (°)	Field Strength (nT)
	BGGM2015	11/11/2015	8.25	67.02	52,635
	BGGM2016	8/26/2016	8.19	66.96	52,540

Design	Plan 2			
Audit Notes:				
Version:	Phase:	PLAN	Tie On Depth:	0.00
Vertical Section:	Depth From (TVD) (ft)	+N/-S (ft)	+E/-W (ft)	Direction (°)
	0.00	0.00	0.00	179.980

Plan Sections										
Measured Depth (ft)	Inclination (°)	Azimuth (°)	Vertical Depth (ft)	+N/-S (ft)	+E/-W (ft)	Dogleg Rate (°/100ft)	Build Rate (°/100ft)	Turn Rate (°/100ft)	TFO (°)	Target
0.00	0.00	0.000	0.00	0.00	0.00	0.00	0.00	0.00	0.00	
800.00	0.00	0.000	800.00	0.00	0.00	0.00	0.00	0.00	0.00	
1,453.28	13.07	106.342	1,447.63	-20.87	71.17	2.00	2.00	0.00	106.34	
4,948.50	13.07	106.342	4,852.37	-243.19	829.39	0.00	0.00	0.00	0.00	
5,601.78	0.00	0.000	5,500.00	-264.06	900.56	2.00	-2.00	0.00	180.00	
5,909.32	0.00	0.000	5,807.54	-264.06	900.56	0.00	0.00	0.00	0.00	
6,660.56	90.15	179.980	6,285.00	-742.77	900.73	12.00	12.00	23.96	179.98	
16,239.73	90.15	179.980	6,260.00	-10,321.90	904.15	0.00	0.00	0.00	0.00	5-62-27-0560C2 P.B.I

Database:	Casper District	Local Co-ordinate Reference:	Well Anschutz State Fed 5-62-27-0659B2
Company:	Bill Barrett Corp.	TVD Reference:	GL 4701' & KB 16' @ 4717.00ft
Project:	Weld County, CO NAD 83	MD Reference:	GL 4701' & KB 16' @ 4717.00ft
Site:	Anschutz State 5-62-27_34 SWSE 22 Pad	North Reference:	True
Well:	Anschutz State Fed 5-62-27-0659B2	Survey Calculation Method:	Minimum Curvature
Wellbore:	OH		
Design:	Plan 2		

Planned Survey									
Measured Depth (ft)	Inclination (°)	Azimuth (°)	Vertical Depth (ft)	+N/-S (ft)	+E/-W (ft)	Vertical Section (ft)	Dogleg Rate (°/100ft)	Build Rate (°/100ft)	Turn Rate (°/100ft)
0.00	0.00	0.000	0.00	0.00	0.00	0.00	0.00	0.00	0.00
100.00	0.00	0.000	100.00	0.00	0.00	0.00	0.00	0.00	0.00
200.00	0.00	0.000	200.00	0.00	0.00	0.00	0.00	0.00	0.00
300.00	0.00	0.000	300.00	0.00	0.00	0.00	0.00	0.00	0.00
400.00	0.00	0.000	400.00	0.00	0.00	0.00	0.00	0.00	0.00
500.00	0.00	0.000	500.00	0.00	0.00	0.00	0.00	0.00	0.00
600.00	0.00	0.000	600.00	0.00	0.00	0.00	0.00	0.00	0.00
700.00	0.00	0.000	700.00	0.00	0.00	0.00	0.00	0.00	0.00
800.00	0.00	0.000	800.00	0.00	0.00	0.00	0.00	0.00	0.00
Start Build 2.00									
900.00	2.00	106.342	899.98	-0.49	1.67	0.49	2.00	2.00	0.00
1,000.00	4.00	106.342	999.84	-1.96	6.70	1.97	2.00	2.00	0.00
1,100.00	6.00	106.342	1,099.45	-4.42	15.06	4.42	2.00	2.00	0.00
1,200.00	8.00	106.342	1,198.70	-7.84	26.75	7.85	2.00	2.00	0.00
1,300.00	10.00	106.342	1,297.47	-12.25	41.76	12.26	2.00	2.00	0.00
1,400.00	12.00	106.342	1,395.62	-17.61	60.07	17.64	2.00	2.00	0.00
1,453.28	13.07	106.342	1,447.63	-20.87	71.17	20.89	2.00	2.00	0.00
Start 3495.23 hold at 1453.28 MD									
1,500.00	13.07	106.342	1,493.14	-23.84	81.30	23.87	0.00	0.00	0.00
1,600.00	13.07	106.342	1,590.55	-30.20	103.00	30.24	0.00	0.00	0.00
1,700.00	13.07	106.342	1,687.97	-36.56	124.69	36.60	0.00	0.00	0.00
1,800.00	13.07	106.342	1,785.38	-42.92	146.38	42.97	0.00	0.00	0.00
1,900.00	13.07	106.342	1,882.79	-49.28	168.08	49.34	0.00	0.00	0.00
2,000.00	13.07	106.342	1,980.20	-55.64	189.77	55.71	0.00	0.00	0.00
2,100.00	13.07	106.342	2,077.61	-62.00	211.46	62.08	0.00	0.00	0.00
2,200.00	13.07	106.342	2,175.02	-68.37	233.16	68.45	0.00	0.00	0.00
2,300.00	13.07	106.342	2,272.43	-74.73	254.85	74.81	0.00	0.00	0.00
2,400.00	13.07	106.342	2,369.84	-81.09	276.54	81.18	0.00	0.00	0.00
2,500.00	13.07	106.342	2,467.26	-87.45	298.23	87.55	0.00	0.00	0.00
2,600.00	13.07	106.342	2,564.67	-93.81	319.93	93.92	0.00	0.00	0.00
2,700.00	13.07	106.342	2,662.08	-100.17	341.62	100.29	0.00	0.00	0.00
2,800.00	13.07	106.342	2,759.49	-106.53	363.31	106.66	0.00	0.00	0.00
2,900.00	13.07	106.342	2,856.90	-112.89	385.01	113.03	0.00	0.00	0.00
3,000.00	13.07	106.342	2,954.31	-119.25	406.70	119.39	0.00	0.00	0.00
3,100.00	13.07	106.342	3,051.72	-125.61	428.39	125.76	0.00	0.00	0.00
3,200.00	13.07	106.342	3,149.13	-131.97	450.09	132.13	0.00	0.00	0.00
3,300.00	13.07	106.342	3,246.55	-138.33	471.78	138.50	0.00	0.00	0.00
3,400.00	13.07	106.342	3,343.96	-144.70	493.47	144.87	0.00	0.00	0.00
3,500.00	13.07	106.342	3,441.37	-151.06	515.17	151.24	0.00	0.00	0.00
3,600.00	13.07	106.342	3,538.78	-157.42	536.86	157.60	0.00	0.00	0.00
3,700.00	13.07	106.342	3,636.19	-163.78	558.55	163.97	0.00	0.00	0.00
3,800.00	13.07	106.342	3,733.60	-170.14	580.25	170.34	0.00	0.00	0.00
3,900.00	13.07	106.342	3,831.01	-176.50	601.94	176.71	0.00	0.00	0.00
4,000.00	13.07	106.342	3,928.42	-182.86	623.63	183.08	0.00	0.00	0.00
4,100.00	13.07	106.342	4,025.84	-189.22	645.33	189.45	0.00	0.00	0.00
4,200.00	13.07	106.342	4,123.25	-195.58	667.02	195.81	0.00	0.00	0.00
4,300.00	13.07	106.342	4,220.66	-201.94	688.71	202.18	0.00	0.00	0.00
4,400.00	13.07	106.342	4,318.07	-208.30	710.41	208.55	0.00	0.00	0.00
4,500.00	13.07	106.342	4,415.48	-214.66	732.10	214.92	0.00	0.00	0.00
4,600.00	13.07	106.342	4,512.89	-221.03	753.79	221.29	0.00	0.00	0.00
4,700.00	13.07	106.342	4,610.30	-227.39	775.49	227.66	0.00	0.00	0.00
4,800.00	13.07	106.342	4,707.71	-233.75	797.18	234.02	0.00	0.00	0.00
4,900.00	13.07	106.342	4,805.12	-240.11	818.87	240.39	0.00	0.00	0.00
4,948.50	13.07	106.342	4,852.37	-243.19	829.39	243.48	0.00	0.00	0.00

Database:	Casper District	Local Co-ordinate Reference:	Well Anschutz State Fed 5-62-27-0659B2
Company:	Bill Barrett Corp.	TVD Reference:	GL 4701' & KB 16' @ 4717.00ft
Project:	Weld County, CO NAD 83	MD Reference:	GL 4701' & KB 16' @ 4717.00ft
Site:	Anschutz State 5-62-27_34 SWSE 22 Pad	North Reference:	True
Well:	Anschutz State Fed 5-62-27-0659B2	Survey Calculation Method:	Minimum Curvature
Wellbore:	OH		
Design:	Plan 2		

Planned Survey									
Measured Depth (ft)	Inclination (°)	Azimuth (°)	Vertical Depth (ft)	+N/-S (ft)	+E/-W (ft)	Vertical Section (ft)	Dogleg Rate (°/100ft)	Build Rate (°/100ft)	Turn Rate (°/100ft)
Start Drop -2.00									
5,000.00	12.04	106.342	4,902.64	-246.34	840.13	246.63	2.00	-2.00	0.00
5,100.00	10.04	106.342	5,000.78	-251.73	858.50	252.03	2.00	-2.00	0.00
5,200.00	8.04	106.342	5,099.54	-256.15	873.57	256.45	2.00	-2.00	0.00
5,300.00	6.04	106.342	5,198.78	-259.59	885.32	259.90	2.00	-2.00	0.00
5,400.00	4.04	106.342	5,298.39	-262.06	893.74	262.37	2.00	-2.00	0.00
5,500.00	2.04	106.342	5,398.24	-263.55	898.83	263.87	2.00	-2.00	0.00
5,600.00	0.04	106.342	5,498.22	-264.06	900.56	264.37	2.00	-2.00	0.00
5,601.78	0.00	0.000	5,500.00	-264.06	900.56	264.37	2.00	-2.00	0.00
Start 307.54 hold at 5601.78 MD									
5,700.00	0.00	0.000	5,598.22	-264.06	900.56	264.37	0.00	0.00	0.00
5,800.00	0.00	0.000	5,698.22	-264.06	900.56	264.37	0.00	0.00	0.00
5,900.00	0.00	0.000	5,798.22	-264.06	900.56	264.37	0.00	0.00	0.00
5,909.32	0.00	0.000	5,807.54	-264.06	900.56	264.37	0.00	0.00	0.00
Start DLS 12.00 TFO 179.98									
6,000.00	10.88	179.980	5,897.68	-272.65	900.56	272.96	12.00	12.00	0.00
6,100.00	22.88	179.980	5,993.19	-301.63	900.57	301.95	12.00	12.00	0.00
6,200.00	34.88	179.980	6,080.60	-349.84	900.59	350.16	12.00	12.00	0.00
6,300.00	46.88	179.980	6,156.06	-415.18	900.61	415.49	12.00	12.00	0.00
6,400.00	58.88	179.980	6,216.30	-494.77	900.64	495.08	12.00	12.00	0.00
6,500.00	70.88	179.980	6,258.67	-585.15	900.67	585.46	12.00	12.00	0.00
6,600.00	82.88	179.980	6,281.33	-682.36	900.71	682.67	12.00	12.00	0.00
6,660.56	90.15	179.980	6,285.00	-742.77	900.73	743.09	12.00	12.00	0.00
Start 9579.17 hold at 6660.56 MD									
6,700.00	90.15	179.980	6,284.90	-782.21	900.74	782.52	0.00	0.00	0.00
6,800.00	90.15	179.980	6,284.64	-882.21	900.78	882.52	0.00	0.00	0.00
6,900.00	90.15	179.980	6,284.38	-982.21	900.82	982.52	0.00	0.00	0.00
7,000.00	90.15	179.980	6,284.12	-1,082.21	900.85	1,082.52	0.00	0.00	0.00
7,100.00	90.15	179.980	6,283.86	-1,182.21	900.89	1,182.52	0.00	0.00	0.00
7,200.00	90.15	179.980	6,283.60	-1,282.20	900.92	1,282.52	0.00	0.00	0.00
7,300.00	90.15	179.980	6,283.33	-1,382.20	900.96	1,382.52	0.00	0.00	0.00
7,400.00	90.15	179.980	6,283.07	-1,482.20	900.99	1,482.52	0.00	0.00	0.00
7,500.00	90.15	179.980	6,282.81	-1,582.20	901.03	1,582.52	0.00	0.00	0.00
7,600.00	90.15	179.980	6,282.55	-1,682.20	901.07	1,682.52	0.00	0.00	0.00
7,700.00	90.15	179.980	6,282.29	-1,782.20	901.10	1,782.52	0.00	0.00	0.00
7,800.00	90.15	179.980	6,282.03	-1,882.20	901.14	1,882.52	0.00	0.00	0.00
7,900.00	90.15	179.980	6,281.77	-1,982.20	901.17	1,982.52	0.00	0.00	0.00
8,000.00	90.15	179.980	6,281.51	-2,082.20	901.21	2,082.52	0.00	0.00	0.00
8,100.00	90.15	179.980	6,281.25	-2,182.20	901.24	2,182.52	0.00	0.00	0.00
8,200.00	90.15	179.980	6,280.99	-2,282.20	901.28	2,282.52	0.00	0.00	0.00
8,300.00	90.15	179.980	6,280.72	-2,382.20	901.32	2,382.52	0.00	0.00	0.00
8,400.00	90.15	179.980	6,280.46	-2,482.20	901.35	2,482.52	0.00	0.00	0.00
8,500.00	90.15	179.980	6,280.20	-2,582.20	901.39	2,582.51	0.00	0.00	0.00
8,600.00	90.15	179.980	6,279.94	-2,682.20	901.42	2,682.51	0.00	0.00	0.00
8,700.00	90.15	179.980	6,279.68	-2,782.20	901.46	2,782.51	0.00	0.00	0.00
8,800.00	90.15	179.980	6,279.42	-2,882.20	901.49	2,882.51	0.00	0.00	0.00
8,900.00	90.15	179.980	6,279.16	-2,982.20	901.53	2,982.51	0.00	0.00	0.00
9,000.00	90.15	179.980	6,278.90	-3,082.20	901.57	3,082.51	0.00	0.00	0.00
9,100.00	90.15	179.980	6,278.64	-3,182.20	901.60	3,182.51	0.00	0.00	0.00
9,200.00	90.15	179.980	6,278.37	-3,282.20	901.64	3,282.51	0.00	0.00	0.00
9,300.00	90.15	179.980	6,278.11	-3,382.20	901.67	3,382.51	0.00	0.00	0.00
9,400.00	90.15	179.980	6,277.85	-3,482.20	901.71	3,482.51	0.00	0.00	0.00
9,500.00	90.15	179.980	6,277.59	-3,582.20	901.74	3,582.51	0.00	0.00	0.00

Database:	Casper District	Local Co-ordinate Reference:	Well Anschutz State Fed 5-62-27-0659B2
Company:	Bill Barrett Corp.	TVD Reference:	GL 4701' & KB 16' @ 4717.00ft
Project:	Weld County, CO NAD 83	MD Reference:	GL 4701' & KB 16' @ 4717.00ft
Site:	Anschutz State 5-62-27_34 SWSE 22 Pad	North Reference:	True
Well:	Anschutz State Fed 5-62-27-0659B2	Survey Calculation Method:	Minimum Curvature
Wellbore:	OH		
Design:	Plan 2		

Planned Survey									
Measured Depth (ft)	Inclination (°)	Azimuth (°)	Vertical Depth (ft)	+N/-S (ft)	+E/-W (ft)	Vertical Section (ft)	Dogleg Rate (°/100ft)	Build Rate (°/100ft)	Turn Rate (°/100ft)
9,600.00	90.15	179.980	6,277.33	-3,682.20	901.78	3,682.51	0.00	0.00	0.00
9,700.00	90.15	179.980	6,277.07	-3,782.20	901.82	3,782.51	0.00	0.00	0.00
9,800.00	90.15	179.980	6,276.81	-3,882.20	901.85	3,882.51	0.00	0.00	0.00
9,900.00	90.15	179.980	6,276.55	-3,982.20	901.89	3,982.51	0.00	0.00	0.00
10,000.00	90.15	179.980	6,276.29	-4,082.20	901.92	4,082.51	0.00	0.00	0.00
10,100.00	90.15	179.980	6,276.03	-4,182.19	901.96	4,182.51	0.00	0.00	0.00
10,200.00	90.15	179.980	6,275.76	-4,282.19	901.99	4,282.51	0.00	0.00	0.00
10,300.00	90.15	179.980	6,275.50	-4,382.19	902.03	4,382.51	0.00	0.00	0.00
10,400.00	90.15	179.980	6,275.24	-4,482.19	902.07	4,482.51	0.00	0.00	0.00
10,500.00	90.15	179.980	6,274.98	-4,582.19	902.10	4,582.51	0.00	0.00	0.00
10,600.00	90.15	179.980	6,274.72	-4,682.19	902.14	4,682.51	0.00	0.00	0.00
10,700.00	90.15	179.980	6,274.46	-4,782.19	902.17	4,782.51	0.00	0.00	0.00
10,800.00	90.15	179.980	6,274.20	-4,882.19	902.21	4,882.51	0.00	0.00	0.00
10,900.00	90.15	179.980	6,273.94	-4,982.19	902.24	4,982.51	0.00	0.00	0.00
11,000.00	90.15	179.980	6,273.68	-5,082.19	902.28	5,082.51	0.00	0.00	0.00
11,100.00	90.15	179.980	6,273.42	-5,182.19	902.32	5,182.51	0.00	0.00	0.00
11,200.00	90.15	179.980	6,273.15	-5,282.19	902.35	5,282.51	0.00	0.00	0.00
11,300.00	90.15	179.980	6,272.89	-5,382.19	902.39	5,382.51	0.00	0.00	0.00
11,400.00	90.15	179.980	6,272.63	-5,482.19	902.42	5,482.51	0.00	0.00	0.00
11,500.00	90.15	179.980	6,272.37	-5,582.19	902.46	5,582.50	0.00	0.00	0.00
11,600.00	90.15	179.980	6,272.11	-5,682.19	902.49	5,682.50	0.00	0.00	0.00
11,700.00	90.15	179.980	6,271.85	-5,782.19	902.53	5,782.50	0.00	0.00	0.00
11,800.00	90.15	179.980	6,271.59	-5,882.19	902.57	5,882.50	0.00	0.00	0.00
11,900.00	90.15	179.980	6,271.33	-5,982.19	902.60	5,982.50	0.00	0.00	0.00
12,000.00	90.15	179.980	6,271.07	-6,082.19	902.64	6,082.50	0.00	0.00	0.00
12,100.00	90.15	179.980	6,270.81	-6,182.19	902.67	6,182.50	0.00	0.00	0.00
12,200.00	90.15	179.980	6,270.54	-6,282.19	902.71	6,282.50	0.00	0.00	0.00
12,300.00	90.15	179.980	6,270.28	-6,382.19	902.74	6,382.50	0.00	0.00	0.00
12,400.00	90.15	179.980	6,270.02	-6,482.19	902.78	6,482.50	0.00	0.00	0.00
12,500.00	90.15	179.980	6,269.76	-6,582.19	902.82	6,582.50	0.00	0.00	0.00
12,600.00	90.15	179.980	6,269.50	-6,682.19	902.85	6,682.50	0.00	0.00	0.00
12,700.00	90.15	179.980	6,269.24	-6,782.19	902.89	6,782.50	0.00	0.00	0.00
12,800.00	90.15	179.980	6,268.98	-6,882.19	902.92	6,882.50	0.00	0.00	0.00
12,900.00	90.15	179.980	6,268.72	-6,982.19	902.96	6,982.50	0.00	0.00	0.00
13,000.00	90.15	179.980	6,268.46	-7,082.18	902.99	7,082.50	0.00	0.00	0.00
13,100.00	90.15	179.980	6,268.20	-7,182.18	903.03	7,182.50	0.00	0.00	0.00
13,200.00	90.15	179.980	6,267.93	-7,282.18	903.06	7,282.50	0.00	0.00	0.00
13,300.00	90.15	179.980	6,267.67	-7,382.18	903.10	7,382.50	0.00	0.00	0.00
13,400.00	90.15	179.980	6,267.41	-7,482.18	903.14	7,482.50	0.00	0.00	0.00
13,500.00	90.15	179.980	6,267.15	-7,582.18	903.17	7,582.50	0.00	0.00	0.00
13,600.00	90.15	179.980	6,266.89	-7,682.18	903.21	7,682.50	0.00	0.00	0.00
13,700.00	90.15	179.980	6,266.63	-7,782.18	903.24	7,782.50	0.00	0.00	0.00
13,800.00	90.15	179.980	6,266.37	-7,882.18	903.28	7,882.50	0.00	0.00	0.00
13,900.00	90.15	179.980	6,266.11	-7,982.18	903.31	7,982.50	0.00	0.00	0.00
14,000.00	90.15	179.980	6,265.85	-8,082.18	903.35	8,082.50	0.00	0.00	0.00
14,100.00	90.15	179.980	6,265.59	-8,182.18	903.39	8,182.50	0.00	0.00	0.00
14,200.00	90.15	179.980	6,265.32	-8,282.18	903.42	8,282.50	0.00	0.00	0.00
14,300.00	90.15	179.980	6,265.06	-8,382.18	903.46	8,382.50	0.00	0.00	0.00
14,400.00	90.15	179.980	6,264.80	-8,482.18	903.49	8,482.49	0.00	0.00	0.00
14,500.00	90.15	179.980	6,264.54	-8,582.18	903.53	8,582.49	0.00	0.00	0.00
14,600.00	90.15	179.980	6,264.28	-8,682.18	903.56	8,682.49	0.00	0.00	0.00
14,700.00	90.15	179.980	6,264.02	-8,782.18	903.60	8,782.49	0.00	0.00	0.00
14,800.00	90.15	179.980	6,263.76	-8,882.18	903.64	8,882.49	0.00	0.00	0.00
14,900.00	90.15	179.980	6,263.50	-8,982.18	903.67	8,982.49	0.00	0.00	0.00

Database:	Casper District	Local Co-ordinate Reference:	Well Anschutz State Fed 5-62-27-0659B2
Company:	Bill Barrett Corp.	TVD Reference:	GL 4701' & KB 16' @ 4717.00ft
Project:	Weld County, CO NAD 83	MD Reference:	GL 4701' & KB 16' @ 4717.00ft
Site:	Anschutz State 5-62-27_34 SWSE 22 Pad	North Reference:	True
Well:	Anschutz State Fed 5-62-27-0659B2	Survey Calculation Method:	Minimum Curvature
Wellbore:	OH		
Design:	Plan 2		

Planned Survey										
Measured Depth (ft)	Inclination (°)	Azimuth (°)	Vertical Depth (ft)	+N/-S (ft)	+E/-W (ft)	Vertical Section (ft)	Dogleg Rate (°/100ft)	Build Rate (°/100ft)	Turn Rate (°/100ft)	
15,000.00	90.15	179.980	6,263.24	-9,082.18	903.71	9,082.49	0.00	0.00	0.00	
15,100.00	90.15	179.980	6,262.98	-9,182.18	903.74	9,182.49	0.00	0.00	0.00	
15,200.00	90.15	179.980	6,262.71	-9,282.18	903.78	9,282.49	0.00	0.00	0.00	
15,300.00	90.15	179.980	6,262.45	-9,382.18	903.81	9,382.49	0.00	0.00	0.00	
15,400.00	90.15	179.980	6,262.19	-9,482.18	903.85	9,482.49	0.00	0.00	0.00	
15,500.00	90.15	179.980	6,261.93	-9,582.18	903.89	9,582.49	0.00	0.00	0.00	
15,600.00	90.15	179.980	6,261.67	-9,682.18	903.92	9,682.49	0.00	0.00	0.00	
15,700.00	90.15	179.980	6,261.41	-9,782.18	903.96	9,782.49	0.00	0.00	0.00	
15,800.00	90.15	179.980	6,261.15	-9,882.18	903.99	9,882.49	0.00	0.00	0.00	
15,900.00	90.15	179.980	6,260.89	-9,982.17	904.03	9,982.49	0.00	0.00	0.00	
16,000.00	90.15	179.980	6,260.63	-10,082.17	904.06	10,082.49	0.00	0.00	0.00	
16,100.00	90.15	179.980	6,260.36	-10,182.17	904.10	10,182.49	0.00	0.00	0.00	
16,200.00	90.15	179.980	6,260.10	-10,282.17	904.14	10,282.49	0.00	0.00	0.00	
16,239.73	90.15	179.980	6,260.00	-10,321.90	904.15	10,322.22	0.00	0.00	0.00	
TD at 16239.73										

Design Targets										
Target Name	Dip Angle (°)	Dip Dir. (°)	TVD (ft)	+N/-S (ft)	+E/-W (ft)	Northing (usft)	Easting (usft)	Latitude	Longitude	
- hit/miss target										
- Shape										
5-62-27-0560C2 P.B.H.I	0.00	0.000	6,260.00	-10,321.90	904.15	1,372,749.01	3,332,863.30	40° 21' 1.598 N	104° 18' 20.452 W	
- plan hits target center										
- Point										
5-62-27-0659B2 L.P.	0.00	0.000	6,285.00	-742.77	900.73	1,382,327.22	3,332,731.22	40° 22' 36.260 N	104° 18' 20.491 W	
- plan misses target center by 0.01ft at 6660.56ft MD (6285.00 TVD, -742.77 N, 900.73 E)										
- Point										

Plan Annotations					
Measured Depth (ft)	Vertical Depth (ft)	Local Coordinates			
		+N/-S (ft)	+E/-W (ft)	Comment	
800.00	800.00	0.00	0.00	Start Build 2.00	
1,453.28	1,447.63	-20.87	71.17	Start 3495.23 hold at 1453.28 MD	
4,948.50	4,852.37	-243.19	829.39	Start Drop -2.00	
5,601.78	5,500.00	-264.06	900.56	Start 307.54 hold at 5601.78 MD	
5,909.32	5,807.54	-264.06	900.56	Start DLS 12.00 TFO 179.98	
6,660.56	6,285.00	-742.77	900.73	Start 9579.17 hold at 6660.56 MD	
16,239.73	6,260.00	-10,321.90	904.15	TD at 16239.73	