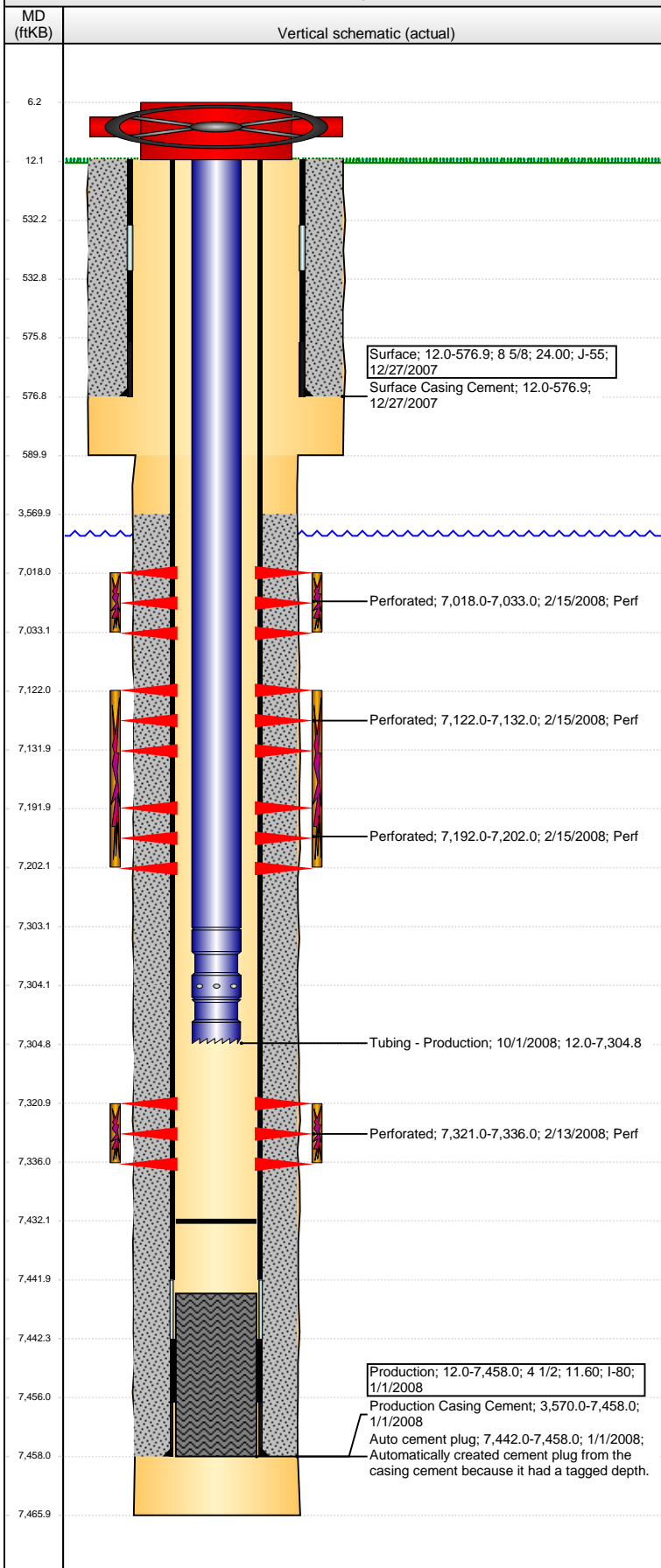


Well Name: LLOYD FEDERAL 37-15

DEVIATED - ORIGINAL HOLE, 8/17/2016 4:20:25 PM



Well Header

API 05-123-24684	Business Unit DJ BASIN	District 15	Well Config DEVIATED
Original KB Elevation (ft) 4,747	KB - GL / MSL (ftKB) 12.00	Spud Date 12/26/2007	P & A Date
Comment			

Directions To Well

WCR 44 & WCR 33, N 1/2, W INTO

Congressional Location

Quarter 3 SW	Quarter 4 SE	Section 15	Township 4 N	Twntshp N/S Dir N	Range 66 W	Range E/W Dir W
-----------------	-----------------	---------------	-----------------	----------------------	---------------	--------------------

Bottom Hole Location

North-South Distance (ft) 76.0	From N or S Line FSL	East-West Distance (ft) 1,469.0	From E or W Line FEL
-----------------------------------	-------------------------	------------------------------------	-------------------------

Plug Back Total Depths

Date	Depth (ftKB)	Method	Com
1/1/2008	7,442.0	CASING TALLY	TOP OF LATCH DOWN BAFFLE
2/13/2008	7,428.0	CASED HOLE LOG	DEPTH LOGGER ON CBL
2/27/2008	7,432.0	TAG	DRILL FRAC PLUGS AND CLEAN OUT TO 7432'

Wellbore Sections

Section Des	Size (in)	Act Top, MD (ftKB)	Act Btm, MD (ftKB)
SURFACE	12 1/4	12	590
PRODUCTION	7 7/8	590	7,466

Zone Statuses

Zone Name	Status Date	Status	Fluid Type	Job	Prod Method
NIOBRARA	4/3/2008	PR		DRILLING/CO...	
CODELL	4/3/2008	PR		DRILLING/CO...	

Casing Strings

Surface, 576.9ftKB

Casing Description	Run Date	OD (in)	Wt/Len (l...)	Grade	Top, MD (ft...)	MD (ftKB)
Surface	12/27/2007	8 5/8	24.00	J-55	12.0	576.9

Production, 7,458.0ftKB

Casing Description	Run Date	OD (in)	Wt/Len (l...)	Grade	Top, MD (ft...)	MD (ftKB)
Production	1/1/2008	4 1/2	11.60	I-80	12.0	7,458.0

Cement

Description	Top Depth (ftKB)	Bottom Depth (ftKB)
Surface Casing Cement	12.0	576.9
Description	Top Depth (ftKB)	Bottom Depth (ftKB)
Production Casing Cement	3,570.0	7,458.0

Tubing Strings

Tubing Description	Run Date	String...	ID (in)	Wt (lb/ft)	Grade	Len (ft)	Set De...
Tubing - Production	10/1/2008	2 3/8	1.995	4.70	J-55	7,292.77	7,208.0

Tubing Components

Item Des	OD (in)	Wt (lb/ft)	Grade	Jts	Len (ft)	Btm (ftKB)	Btm (TVD) (ftKB)
EUE 8rd Tubing	2 3/8	4.70	J-55	232	7,291.12	7,303.1	7,206.3
Seal Nipple	2 3/8			1	1.15	7,304.3	7,207.5
Notched collar	2 3/8			1	0.50	7,304.8	7,208.0

Perforation Data

Zone	Bnch/St g	Entered Shot Total	Top (ftKB)	Btm (ftKB)	Date
NIOBRARA, ORIGINAL HOLE	A	60	7,018.00	7,033.00	2/15/2008
NIOBRARA, ORIGINAL HOLE	B	30	7,122.00	7,132.00	2/15/2008
NIOBRARA, ORIGINAL HOLE	C	30	7,192.00	7,202.00	2/15/2008
CODELL, ORIGINAL HOLE		60	7,321.00	7,336.00	2/13/2008

Stimulations & Treatments

Date	Zone	Primary Job Type
2/15/2008	NIOBRARA, ORIGINAL HOLE	DRILLING/COMPLETION - ORIGINAL
Technical Result		Tech Result Details
		Tech Result Note

Comment A BENCH FRAC

Date	Zone	Primary Job Type
2/15/2008	NIOBRARA, ORIGINAL HOLE	DRILLING/COMPLETION - ORIGINAL
Technical Result		Tech Result Details
		Tech Result Note

Comment B & C BENCH FRAC

Well Name: LLOYD FEDERAL 37-15

DEVIATED - ORIGINAL HOLE, 8/17/2016 4:20:28 PM

Stimulations & Treatments

Date 2/15/2008	Zone CODELL, ORIGINAL HOLE	Primary Job Type DRILLING/COMPLETION - ORIGINAL
Technical Result	Tech Result Details	Tech Result Note

Comment

Other In Hole

Run Date	Des	OD (in)	Top (ftKB)	Btm (ftKB)

Logs

Date	Type	Top, MD (ftKB)	Btm, MD (ftKB)
12/31/2007	COMPENSATED DENSITY	3,600.0	7,444.0
12/31/2007	INDUCTION	576.0	7,464.0
2/13/2008	CBL/CCL/GR	3,400.0	7,426.0
2/13/2008	COLLAR LOCATOR	7,250.0	7,360.0
2/15/2008	COLLAR LOCATOR	6,920.0	7,040.0
2/4/2010	TUBING INSPECTION	12.0	7,298.0
7/6/2011	TUBING INSPECTION	12.0	7,298.0

