

# SMITH OIL PROPERTIES

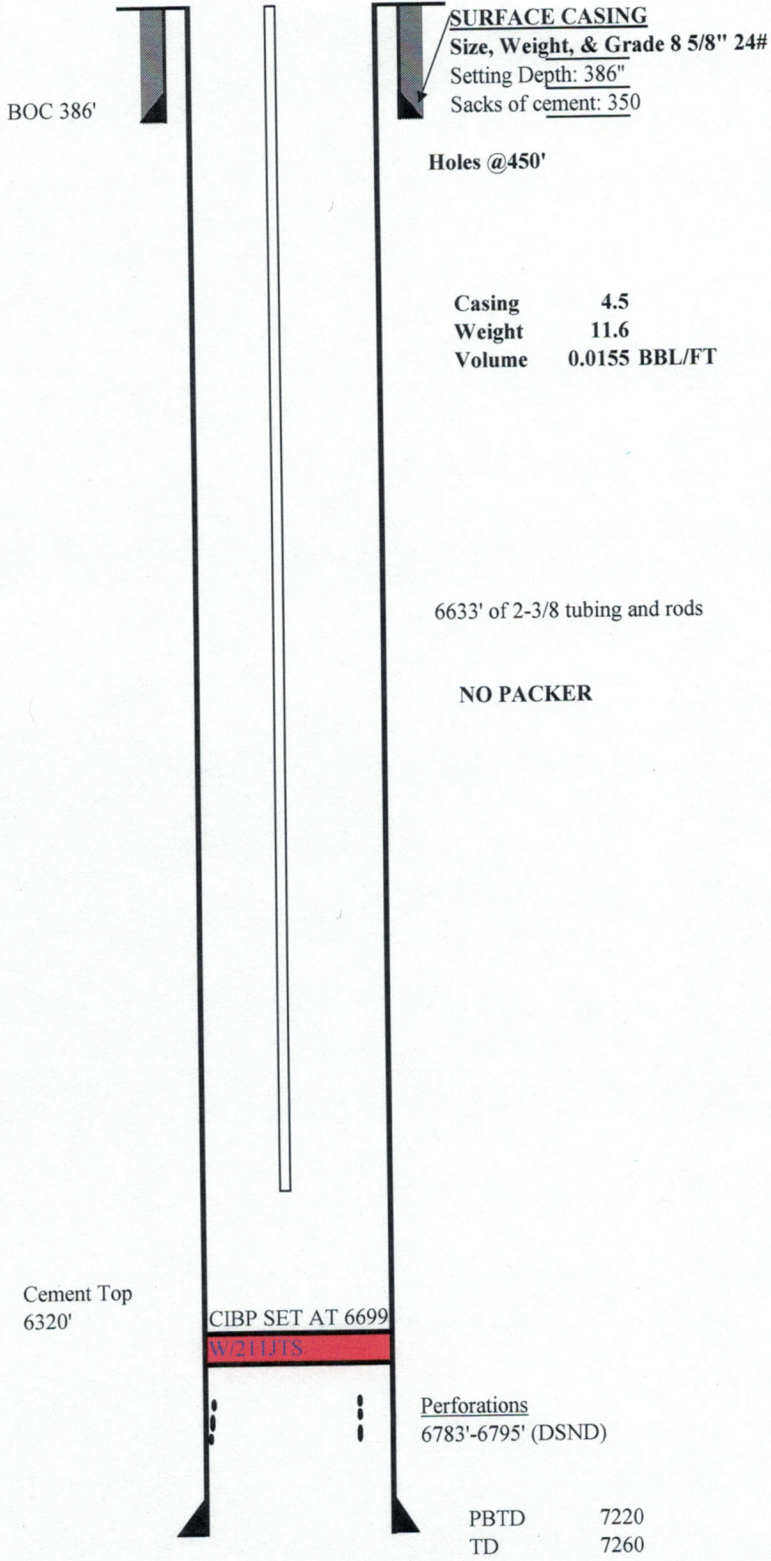
Lease: PREMIER (LANYARD EXTENSION) #42-4

Legals: SENE 4 62W 6PM

API #: # 05-123-09269

Directions: LAT: 40.17072  
LONG:-104.3278

GL. Elev. 4707  
KB Elev. 4717



SURFACE CASING  
Size, Weight, & Grade 8 5/8" 24#  
Setting Depth: 386"  
Sacks of cement: 350

Holes @450'

Casing 4.5  
Weight 11.6  
Volume 0.0155 BBL/FT

6633' of 2-3/8 tubing and rods

NO PACKER

Cement Top  
6320'

CIBP SET AT 6699'  
W 211JTS

Perforations  
6783'-6795' (DSND)

PBTD 7220  
TD 7260