

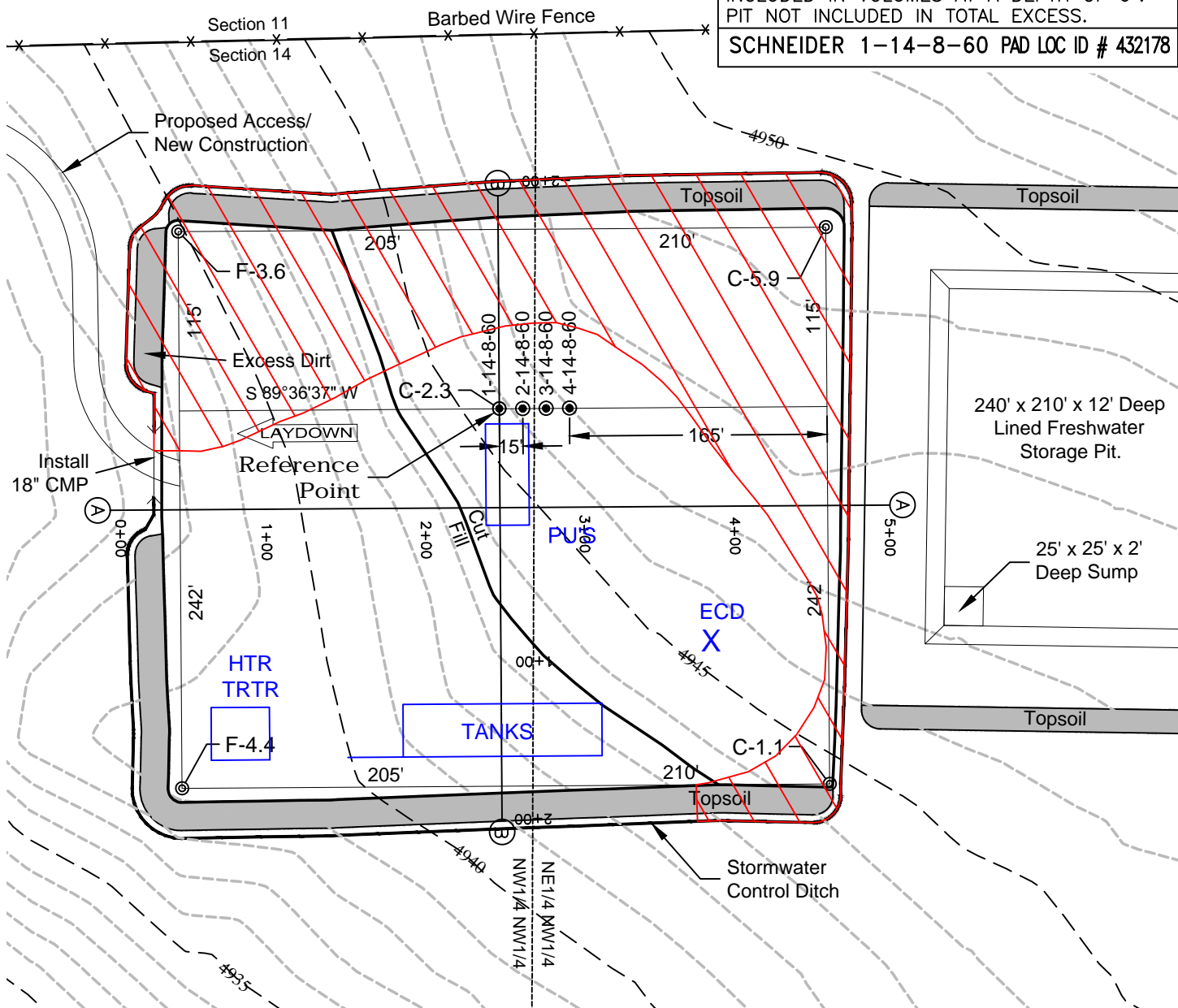
CONSTRUCTION LAYOUT DRAWING


1 of 2

VEGETATION:
PASTURE

SURFACE USE:
GRAZING

PAD 357'X415' ELEV=4943.5'			
DISTURBED AREA=4.6± ACRES			
ESTIMATED DIRT QUANTITIES			
CUTx10%	FILL	TOPSOIL	EXCESS
10,130	7,060	2,960	110
NOTE: VOLUMES IN CUBIC YARDS. TOPSOIL INCLUDED IN VOLUMES AT A DEPTH OF 6". PIT NOT INCLUDED IN TOTAL EXCESS.			
SCHNEIDER 1-14-8-60 PAD LOC ID # 432178			



 RECLAIMED ACREAGE
TOTAL RECLAIMED 1.7 ACRES
NOT ALL TOP SOIL INSIDE OF RECLAIMED AREA WILL BE UTILIZED.

NOTE:
10% ALLOWANCE IS MADE FOR SOIL EXPANSION.

CARRIZO OIL & GAS, INC
SCHNEIDER 1-14-8-60 PAD

NW1/4 NW1/4 SECTION 14 T8N R60W
6th PM WELD COUNTY COLORADO

DWG: P:\Jeff Clowers\Wibrona\DWG\Carrizo\Schneider 1-14-8-60 Acreage 07-11-16.dwg USER: Jeff Clowers DATE: Jul 11, 2016 2:47pm

7/11/16