

VEGETATION:
STUBBLE

SURFACE USE:
AGRICULTURAL

CONSTRUCTION LAYOUT DRAWING

1 of 2

PAD 357'X415' ELEV=4888.2'

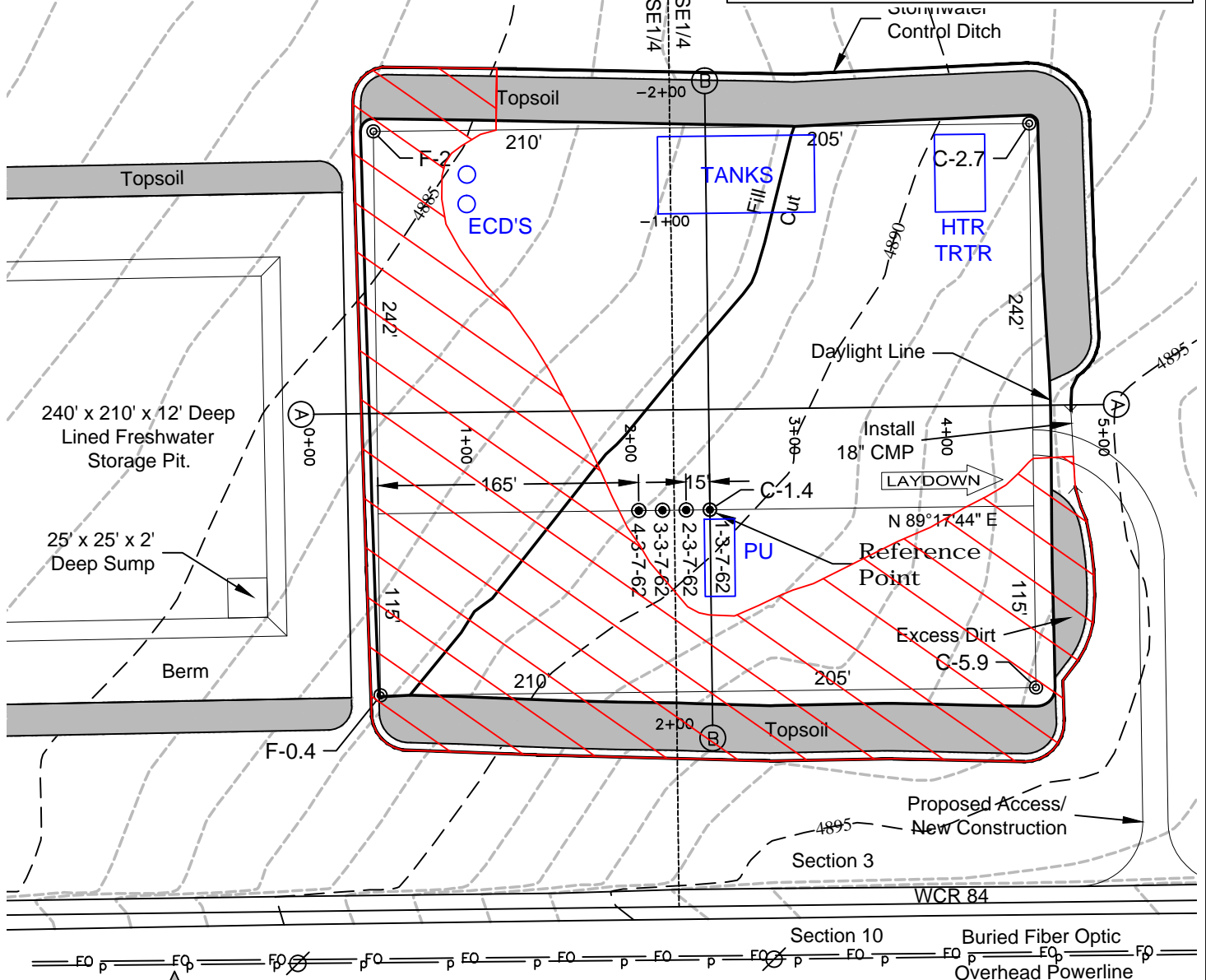
DISTURBED AREA=4.8± ACRES

ESTIMATED DIRT QUANTITIES

CUTx10%	FILL	TOPSOIL	EXCESS
9,450	3,310	5,850	290

NOTE: VOLUMES IN CUBIC YARDS. TOPSOIL INCLUDED IN VOLUMES AT A DEPTH OF 12". PIT NOT INCLUDED IN TOTAL EXCESS.

SIEVERS 1-3-7-62 PAD LOC ID # 431322



RECLAIMED ACREAGE

TOTAL RECLAIMED 2.1 ACRES
NOT ALL TOP SOIL INSIDE OF RECLAIMED
AREA WILL BE UTILIZED.

NOTE:

10% ALLOWANCE IS MADE FOR SOIL EXPANSION.

CARRIZO NIOBRARA LLC
SIEVERS 1-3-7-62 PAD

SE1/4 SE1/4 SECTION 3 T7N R62W
6th PM WELD COUNTY COLORADO

DWG: P:\Jeff Clowers\Niobrara\DWG\Carrizo\Niobrara 1-3-7-62 Acreage 07-11-16.dwg
DATE: Jul 11, 2016 3:48pm
USER: Jeff Clowers

7/11/16