

**GAMMA-RAY
CEMENT BOND
VDL**

Company		Petroleum Development Corporation	
Well	Hahn 23-27		
Field	Wattenberg		
County	Weld	State	Colo.
Location	Sec-27, Twp-5N, Rge-67W 1798' FSL & 1922' FWL NE / SW		
Permanent Datum	GL	Elevation	4895
Log Measured From	KB		KB 4907
Drilling Measured From	KB		DF 4906 GL 4895
Other Services	perforate		
Date	6-25-01		
Run Number	one		
Depth Driller	7288		
Depth Logger	7251		
Bottom Logged Interval	7246		
Top Log Interval	5630		
Open Hole Size			
Type Fluid	water		
Density / Viscosity			
Max Recorded Temp.			
Estimated Cement Top	5787		
Time Well Ready			
Time Logger on Bottom			
Equipment Number	T2 G3 B3		
Location	WCR52+HWY257 W1/2 N1/2 Winto		
Recorded By	R. Meisner		
Witnessed By	Jeff Davis		

Run Number	Bit	From	To	Size	Weight	Turnup Record	To
Casing Record							
Surface String				Size	Wgt/Ft	Top	Bottom
Prod. String				4.5			
Production String							
Liner							

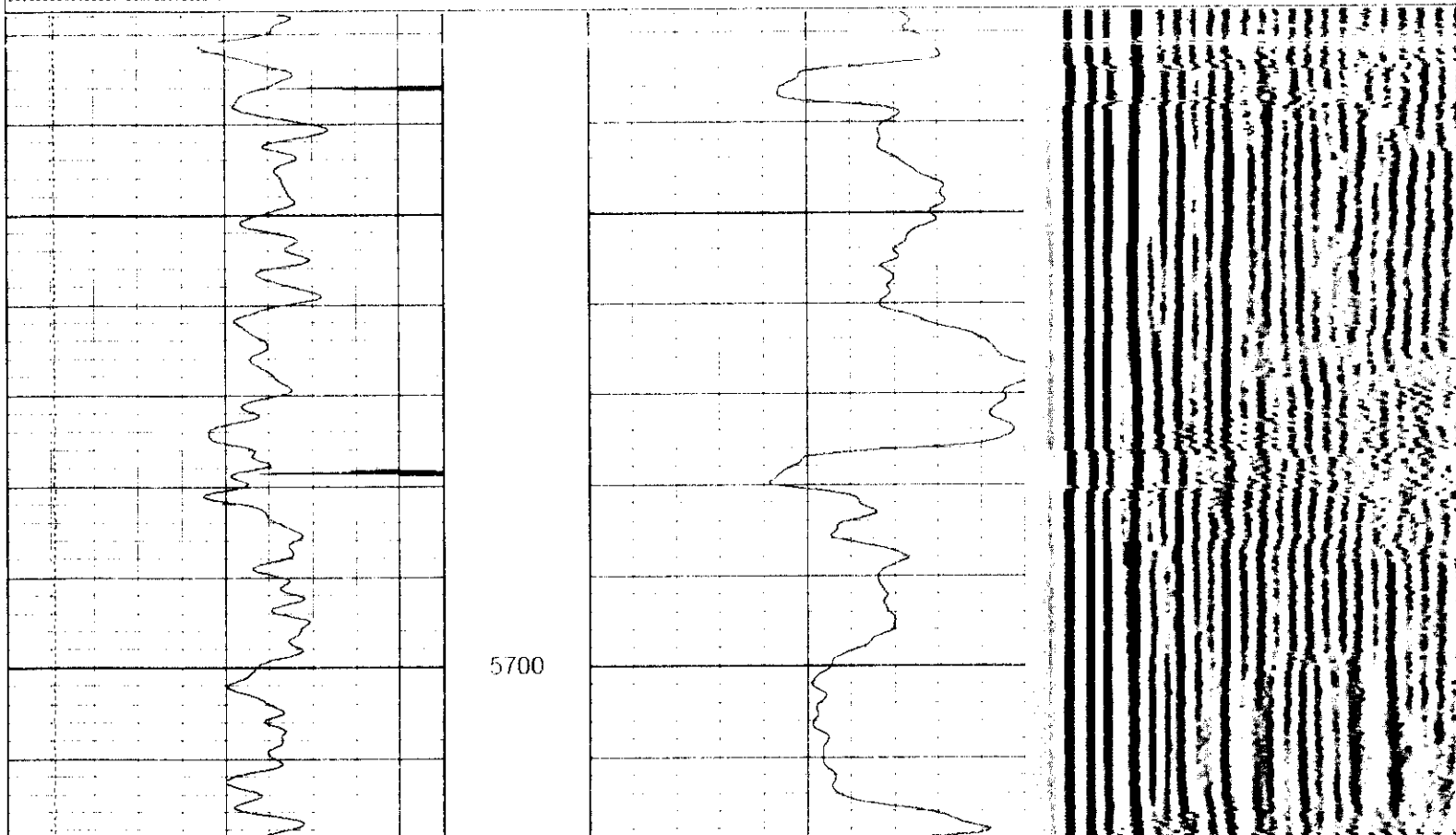
All interpretations are opinions based on inferences from electrical or other measurements and we cannot and do not guarantee the accuracy or correctness of any interpretation, and we shall not, except in the case of gross or willful negligence on our part, be liable or responsible for any loss, costs, damages, or expenses incurred or sustained by anyone resulting from any interpretation made by any of our officers, agents or employees. These interpretations are also subject to our general terms and conditions set out in our current Price Schedule.

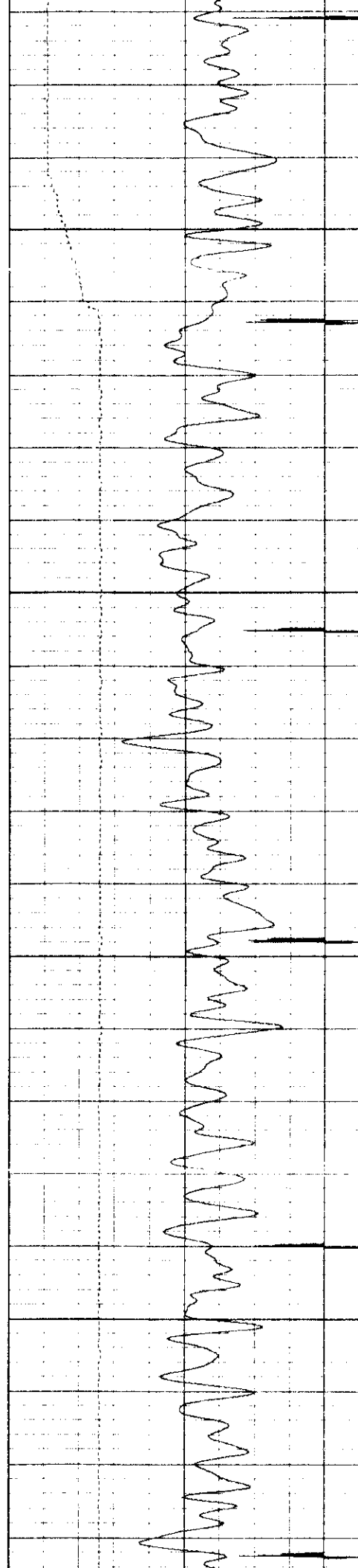
Comments

THANK-YOU FOR USING "NUEX" WIRELINE SERVICES INC. !!!
970.526-1084

Database File: pdc2327.db
Dataset Pathname: pass1
Presentation Format: cbl01.prs
Dataset Creation: Mon Jun 25 08:38:10 2001 by Log VER_5.4
Charted by: Depth in Feet scaled 1:240

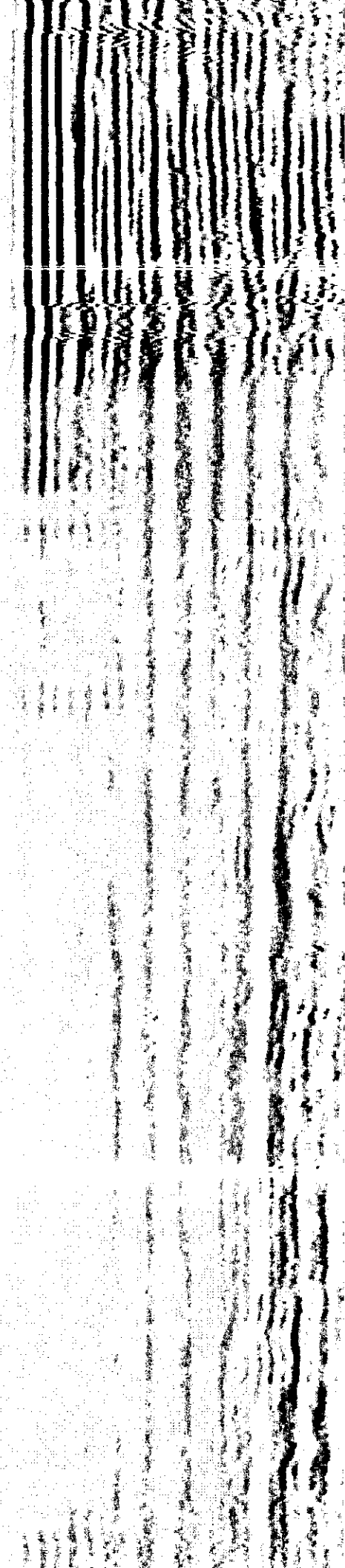
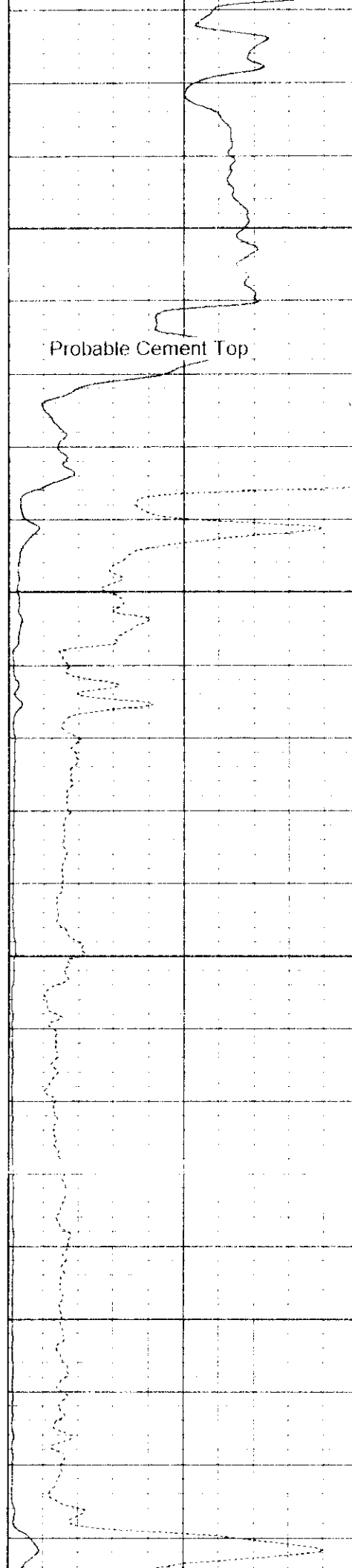
9	Collar Locator	-1	0	Amplified Amplitude (mV)	10 200	Variable Density	1200
0	Gamma Ray (GAPI)	150	0	Amplitude (mV)	100		
30	LSPD (ft/min)	230					

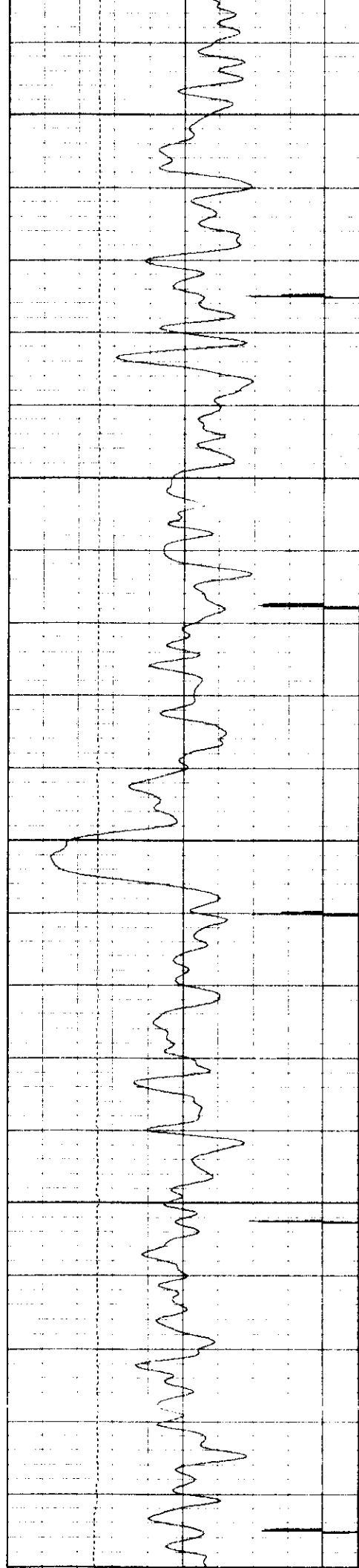




5800

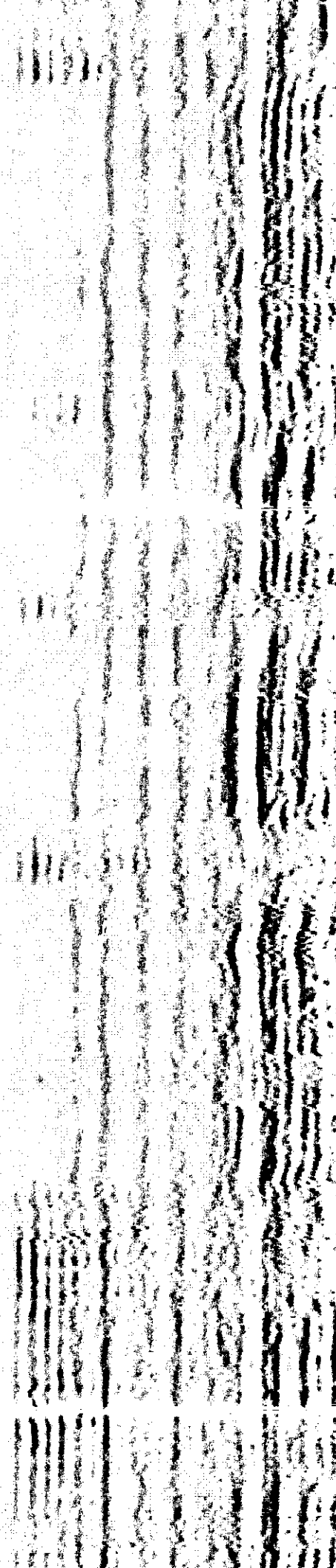
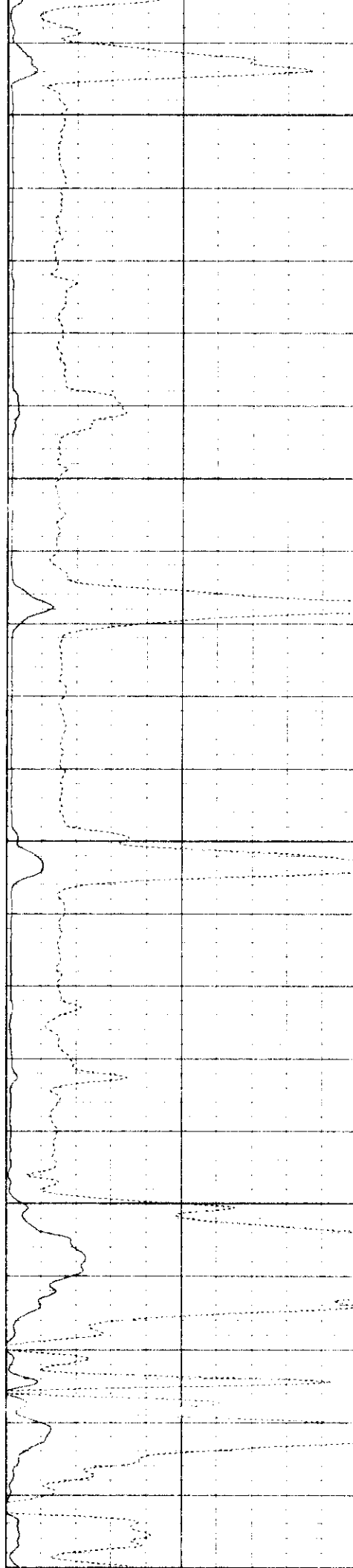
5900

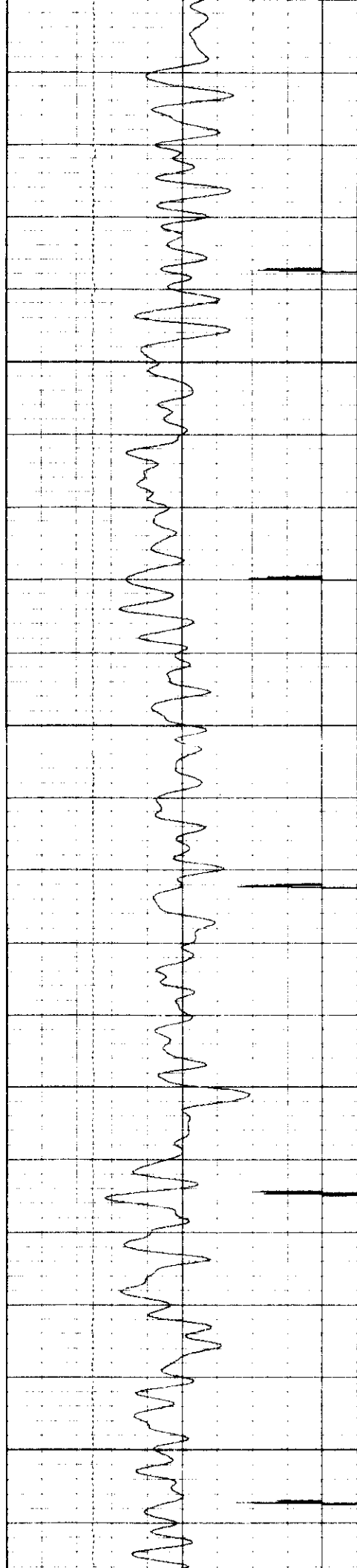




6000

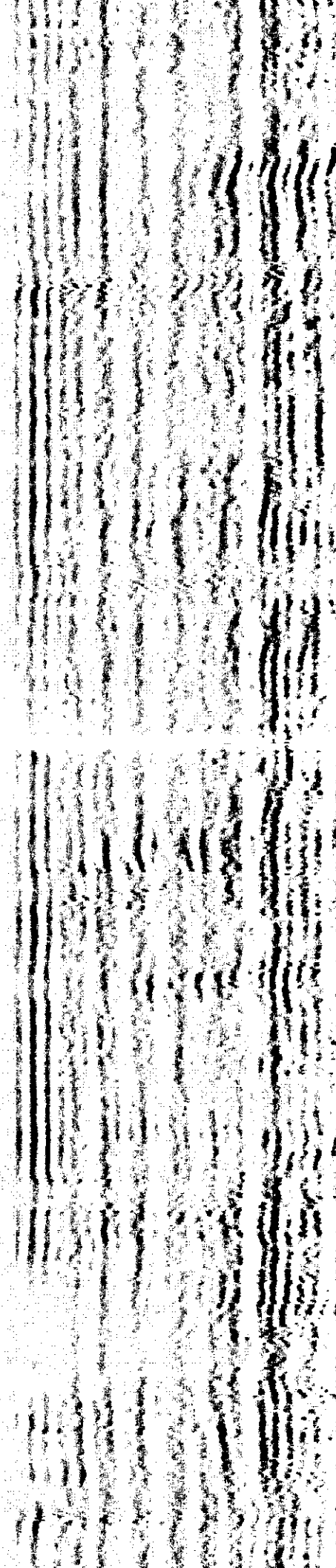
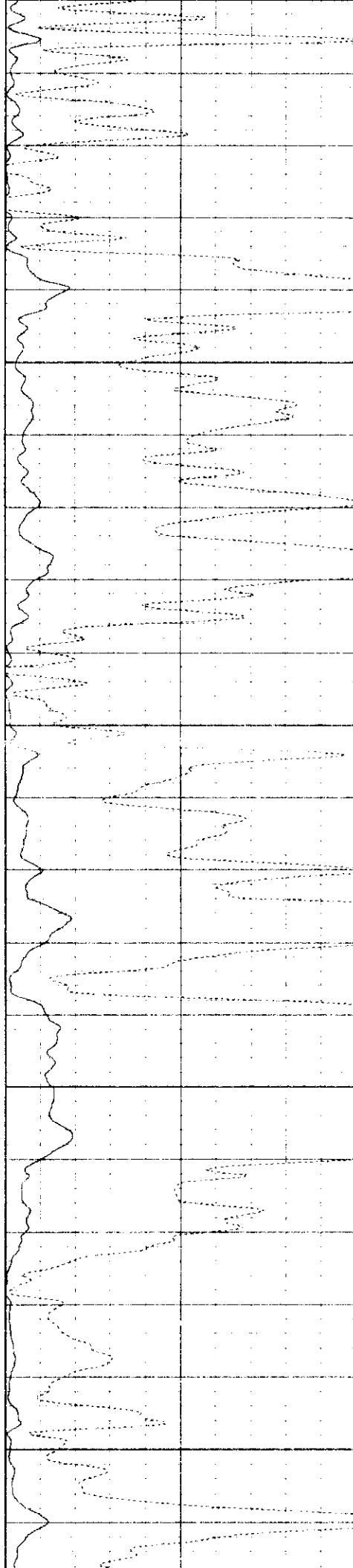
6100

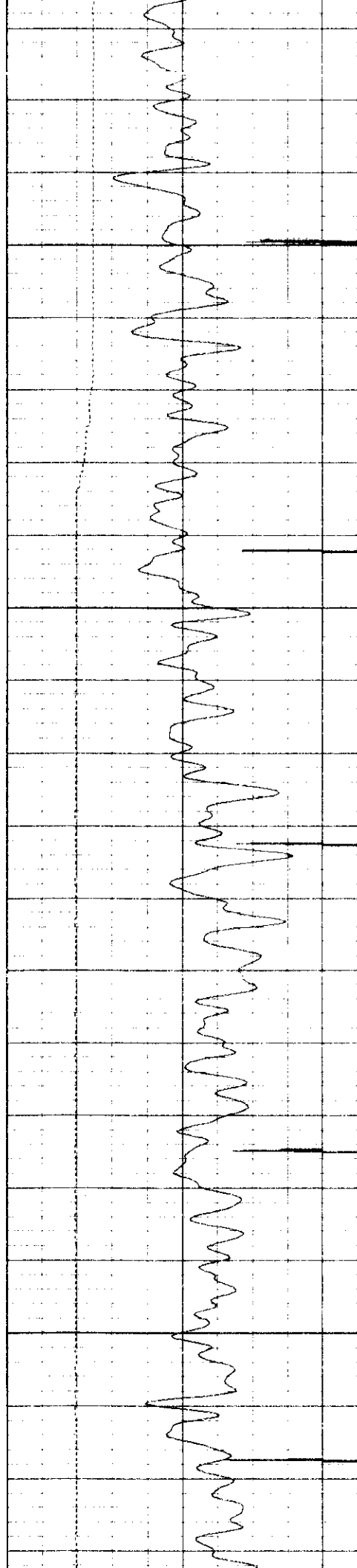




6200

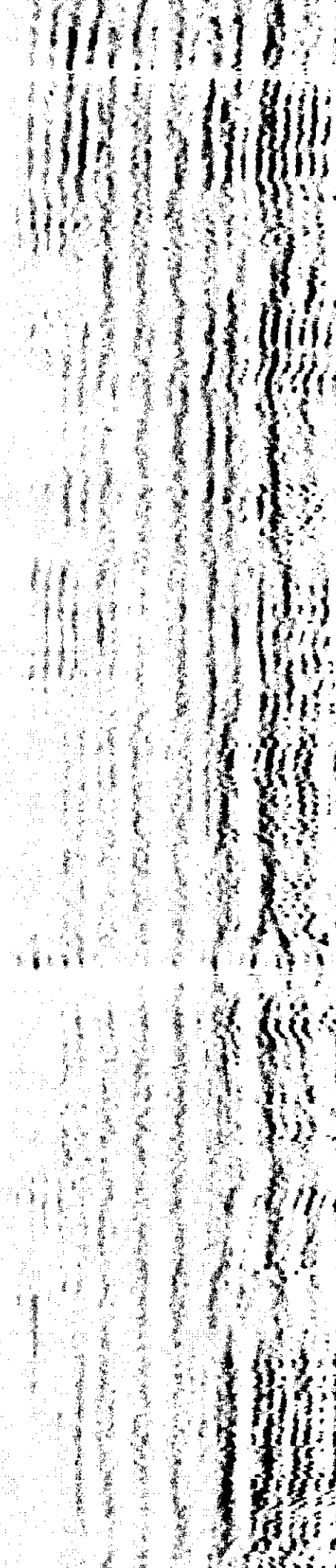
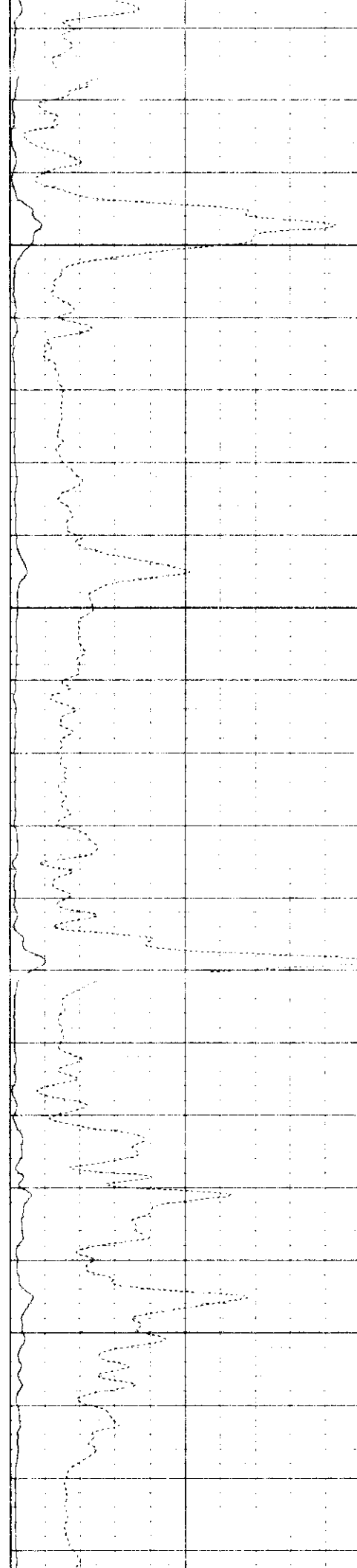
6300

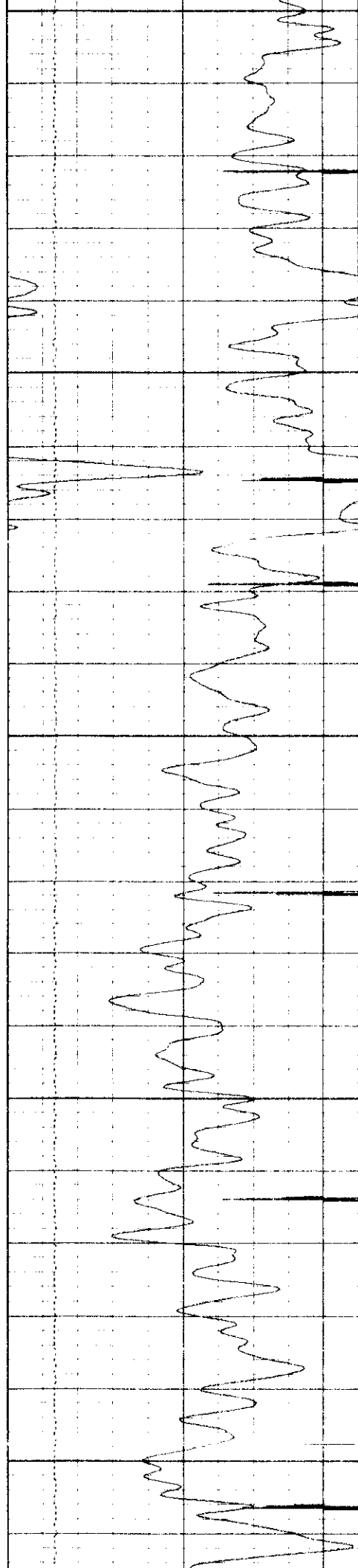




6400

6500



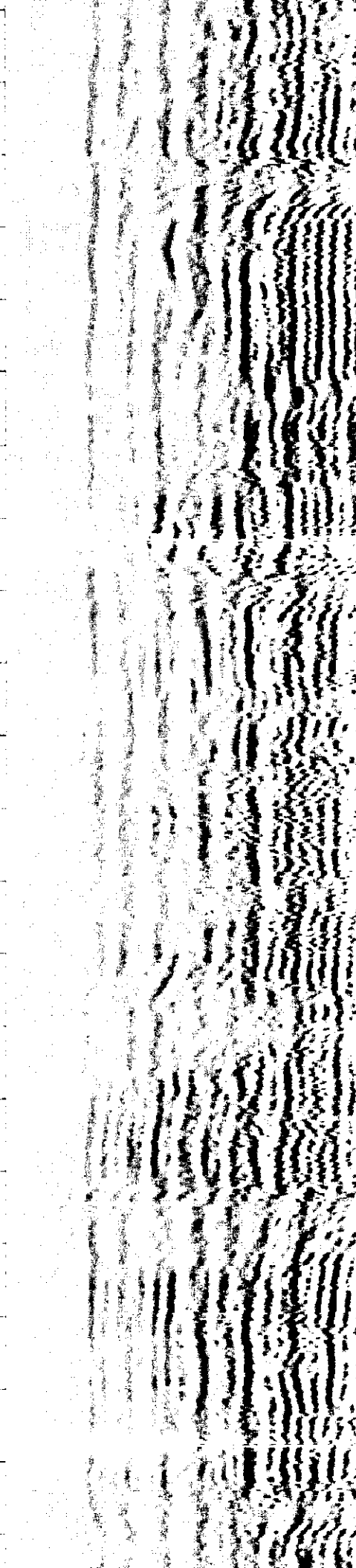
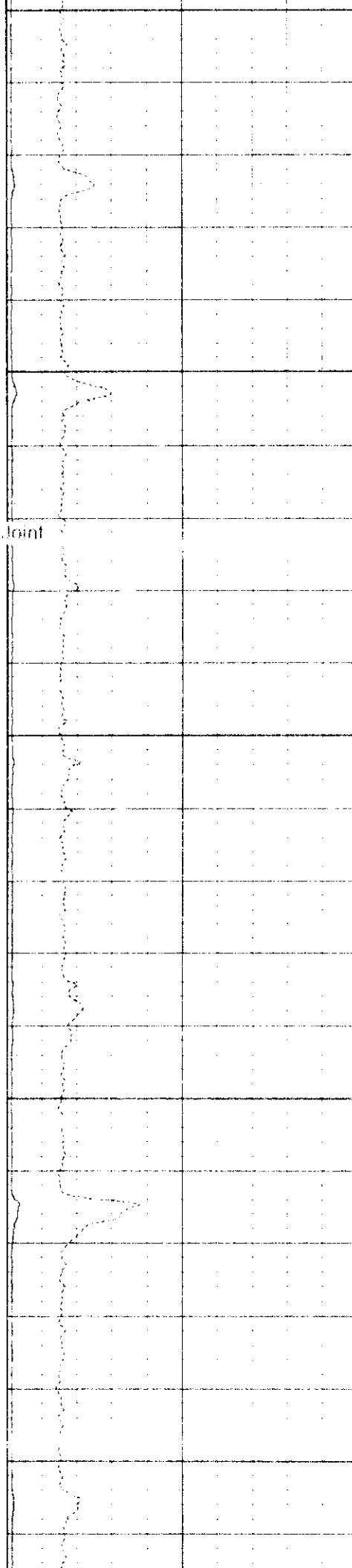


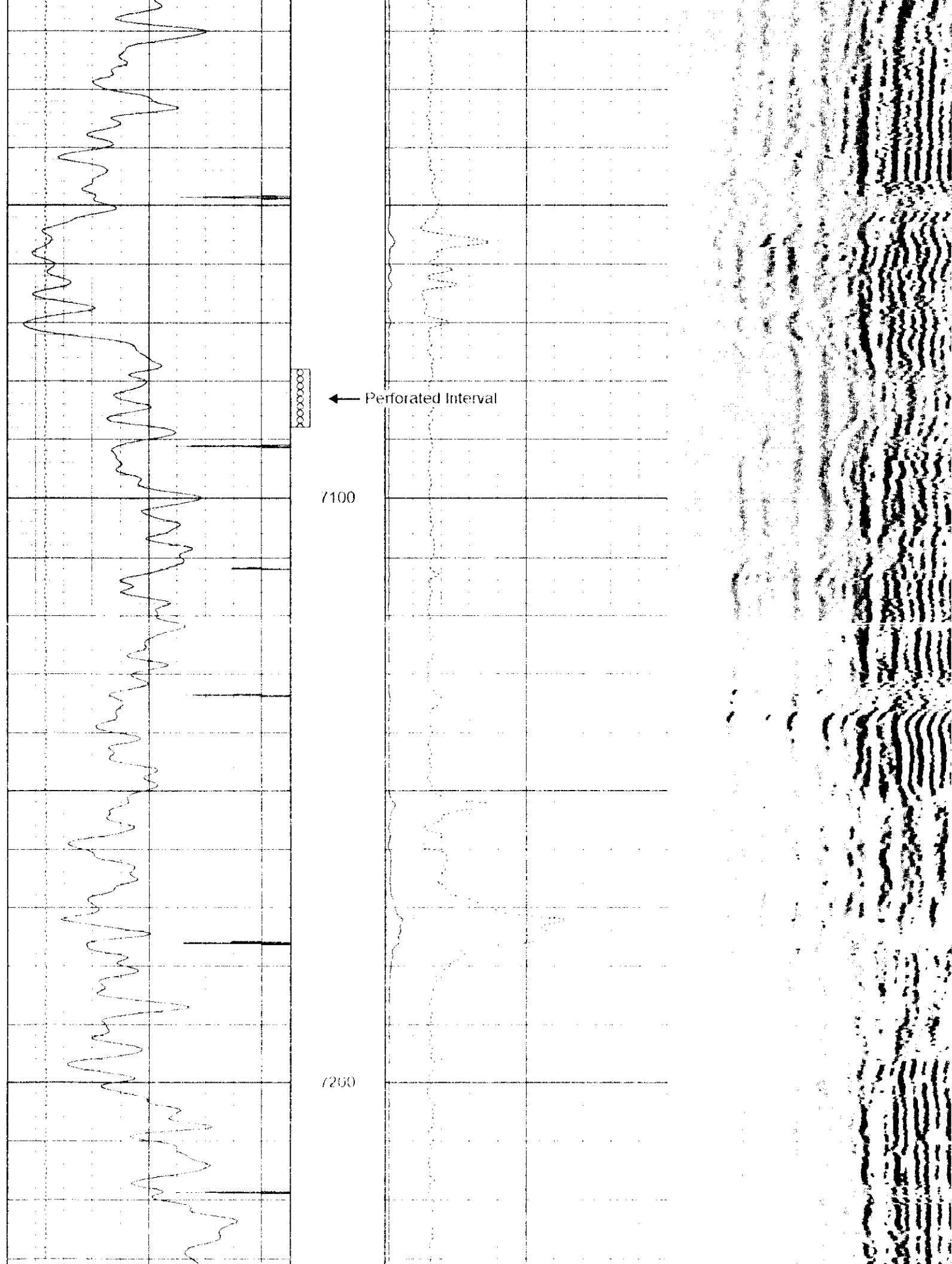
6800

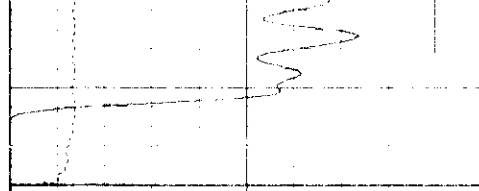
← Flag Joint

6900

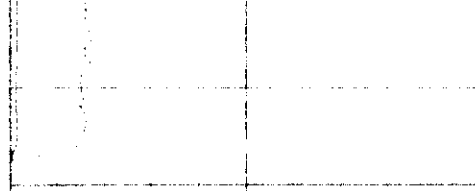
7000







9	Collar Locator	-1
0	Gamma Ray (GAPI)	150
30	LSPD (ft/min)	230



0	Amplified Amplitude (mV)	10 200
0	Amplitude (mV)	100



Variable Density	1200
------------------	------