

Reclamation Inspection

08/19/2016

Operator: Walsh Production Inc

Location ID: 408424

Weld County, CO

SWNW Section 26 T8N R58W

Aaron Trujillo

Reclamation Specialist

COGCC



COLORADO

Department of Natural Resources



Figure 1: Photo taken east of the location, facing west. Photo shows vegetation over the access road.



Figure 2: Photo taken from the north end of the pit location, facing southwest. Photo shows multiple large unvegetated areas over pit location. These areas need to be reclaimed.



Figure 3: Photo taken from the north end of the pit location, facing southwest. Photo shows multiple large unvegetated areas over pit location. These areas need to be reclaimed.



Figure 4: Photo taken from the southwest end of the well location, facing east. Photo shows slope on the south end of the location indicating location has not been re-contoured.



Figure 5: Photo taken from the southwest end of the well location, facing east. Photo shows slope on the south end of the location indicating location has not been re-contoured.



Figure 6: Photo taken from the southwest corner of the location, facing north. Photo shows vegetation over the reclamation area.



Figure 7: Photo taken from the southwest corner of the location, facing northeast. Photo shows vegetation over the reclamation area.



Figure 8: Photo taken from the southwest corner of the location, facing east. Photo shows vegetation over the reclamation area.



Figure 9: Photo taken from the northwest corner of the location, facing south. Photo shows vegetation over the reclamation area. Note areas of slope seeing erosion. Location has not been re-contoured.



Figure 10: Photo taken from the northwest corner of the location, facing southeast. Photo shows vegetation over the reclamation area.



Figure 11: Photo taken from the northwest corner of the location, facing east. Photo shows vegetation over the reclamation area.



Figure 12: Photo of the starting point for the disturbance transect on location, facing east.



Figure 13: Photo of the 50th point for the disturbance transect, facing north. Photo shows vegetation over the reclamation area.



Figure 14: Photo of the 50th point for the disturbance transect, facing south. Photo shows vegetation over the reclamation area.



Figure 15: Photo of the 50th point of the disturbance transect. Photo shows vegetation on the reclamation area.



Figure 16: Photo of the end point for the disturbance transect on location, facing west. Photo shows vegetation over the reclamation area.



Figure 17: Photo of the starting point for the reference transect, facing west.



Figure 18: Photo of the 50th point for the reference transect, facing north. Photo shows vegetation over the reference area.



Figure 19: Photo of the 50th point for the reference transect, facing south. Photo shows vegetation over the reference area.



Figure 20: Photo of the 50th point for the reference transect. Photo shows vegetation over the reference area.



Figure 21: Photo of the end point for the reference transect on location, facing east. Photo shows vegetation over the reference area.

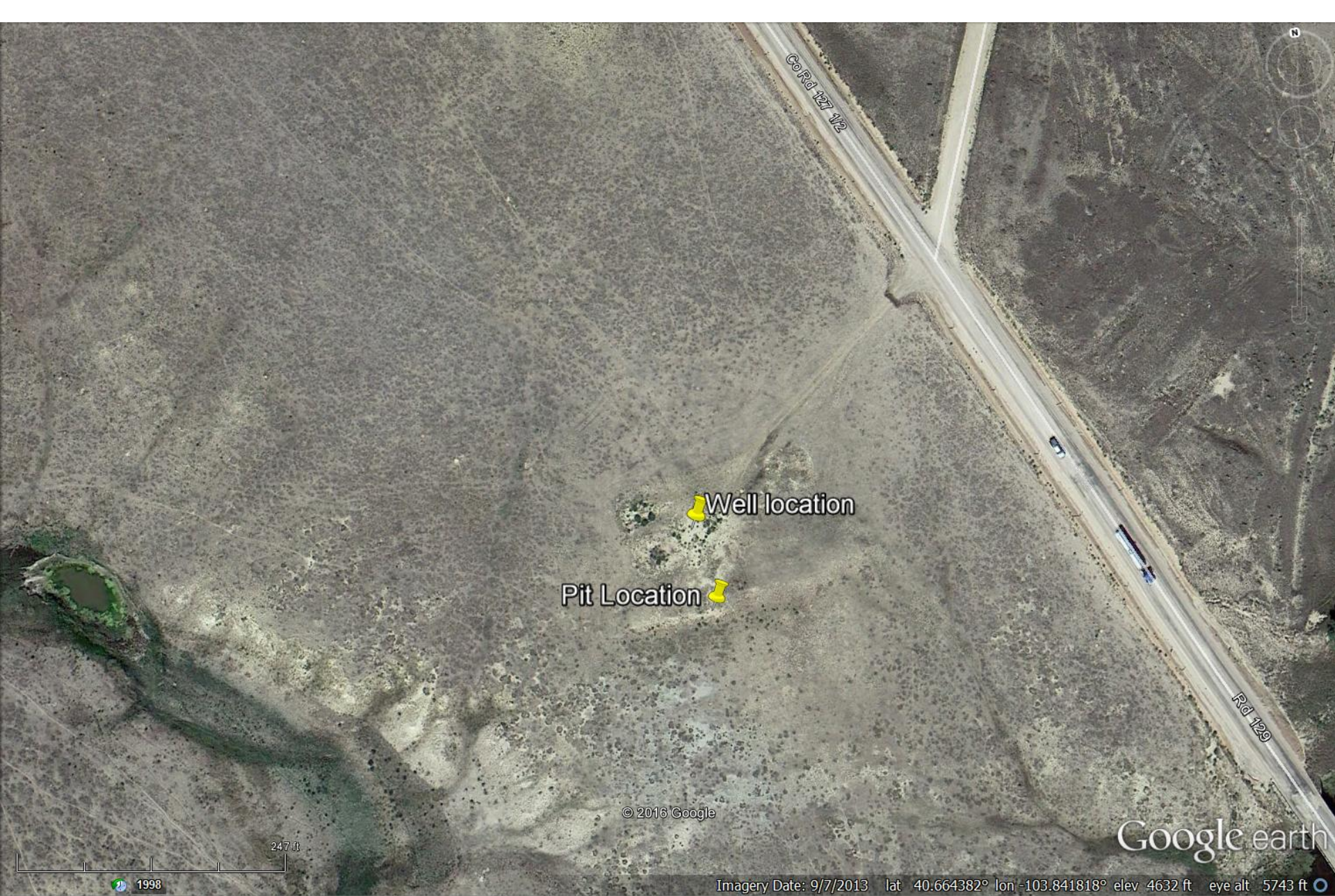


Figure 22: Current (2013) aerial imagery showing pit and well location.