



RADIAL CEMENT BOND
GAMMA RAY
CCL

Company KERR McGEE OIL AND GAS
Well SHERWOOD L30-30D
Field WATTENBERG
County WELD State CO

Location: API # : 05-123-31127
LAT: 40.20080 LONG: -104.82740
NW/NW
SEC 30 TWP 3N RGE 66W
Permanent Datum GL Elevation 4820'
Log Measured From KB 15'
Drilling Measured From KB
Other Services
K.B. 4835'
D.F. 4834'
G.L. 4820'

Company KERR McGEE OIL AND GAS
Well SHERWOOD L30-30D
Field WATTENBERG
County WELD
State CO

Date 10-22-14

Run Number ONE
Depth Driller 8113'
Depth Logger 3100'
Bottom Logged Interval 3097'
Top Log Interval SURFACE
Open Hole Size 7.875
Type Fluid WATER
Density / Viscosity 1.0
Max. Recorded Temp. 108 DEG F
Estimated Cement Top 664'
Time Well Ready N/A
Time Logger on Bottom N/A
Equipment Number 4310
Location GREELEY
Recorded By N. BREHMER
Witnessed By J. CHANDLER

Borehole Record
Run Number ONE
Bit 12.25"
From SURFACE
To 660
Size 660
Weight 8113'
Tubing Record
From 660
To 8113'


Casing Record
Surface String 8.63
Wgt/Ft 24#
Top SURFACE
Bottom 650'
Prot. String
Production String 4.5
11.6#
SURFACE
8103'
Liner

<<< Fold Here >>>



All interpretations are opinions based on inferences from electrical or other measurements and we cannot and do not guarantee the accuracy or correctness of any interpretation, and we shall not, except in the case of gross or willful negligence on our part, be liable or responsible for any loss, costs, damages, or expenses incurred or sustained by anyone resulting from any interpretation made by any of our officers, agents or employees. These interpretations are also subject to our general terms and conditions set out in our current Price Schedule.

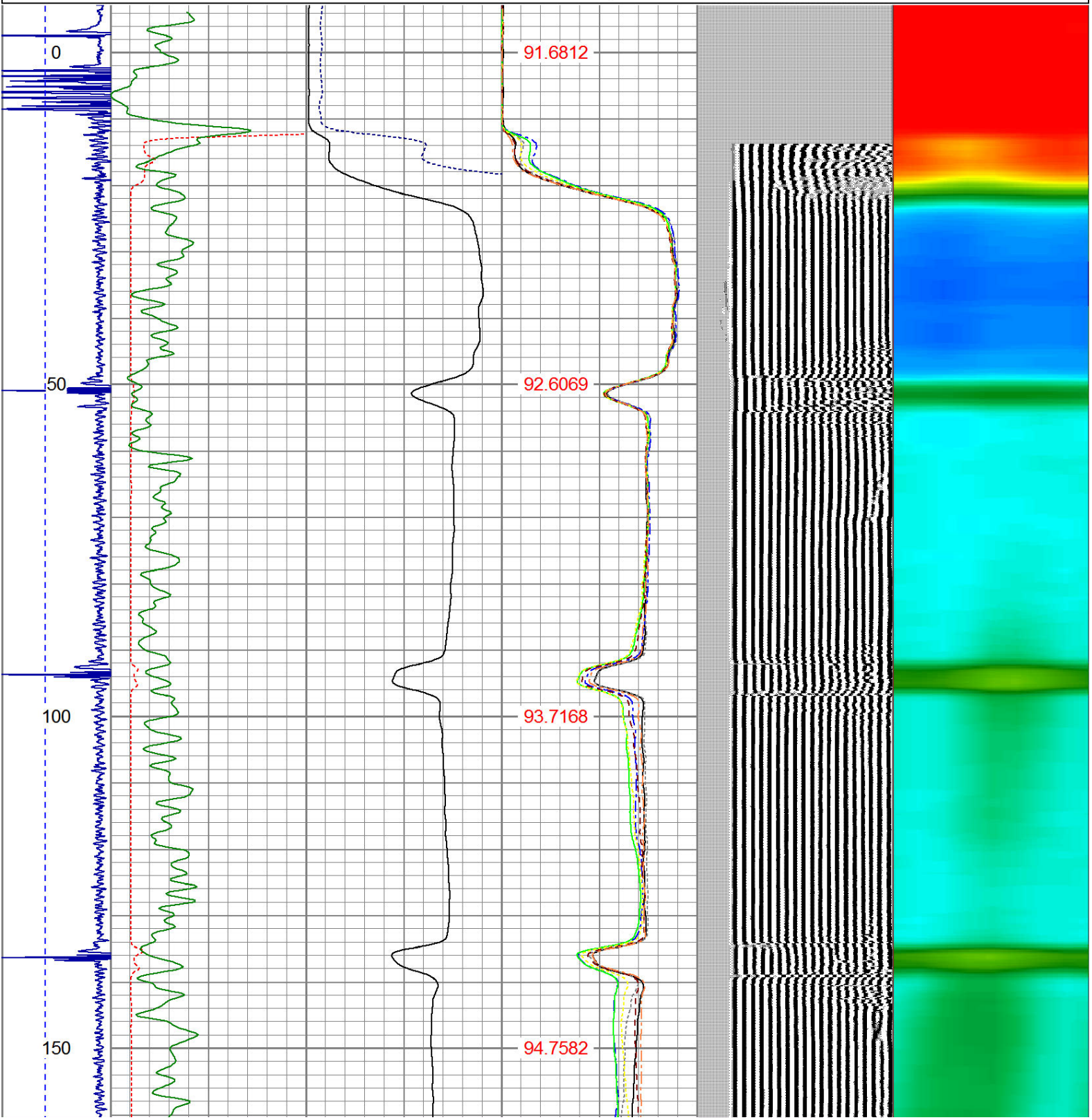
Comments

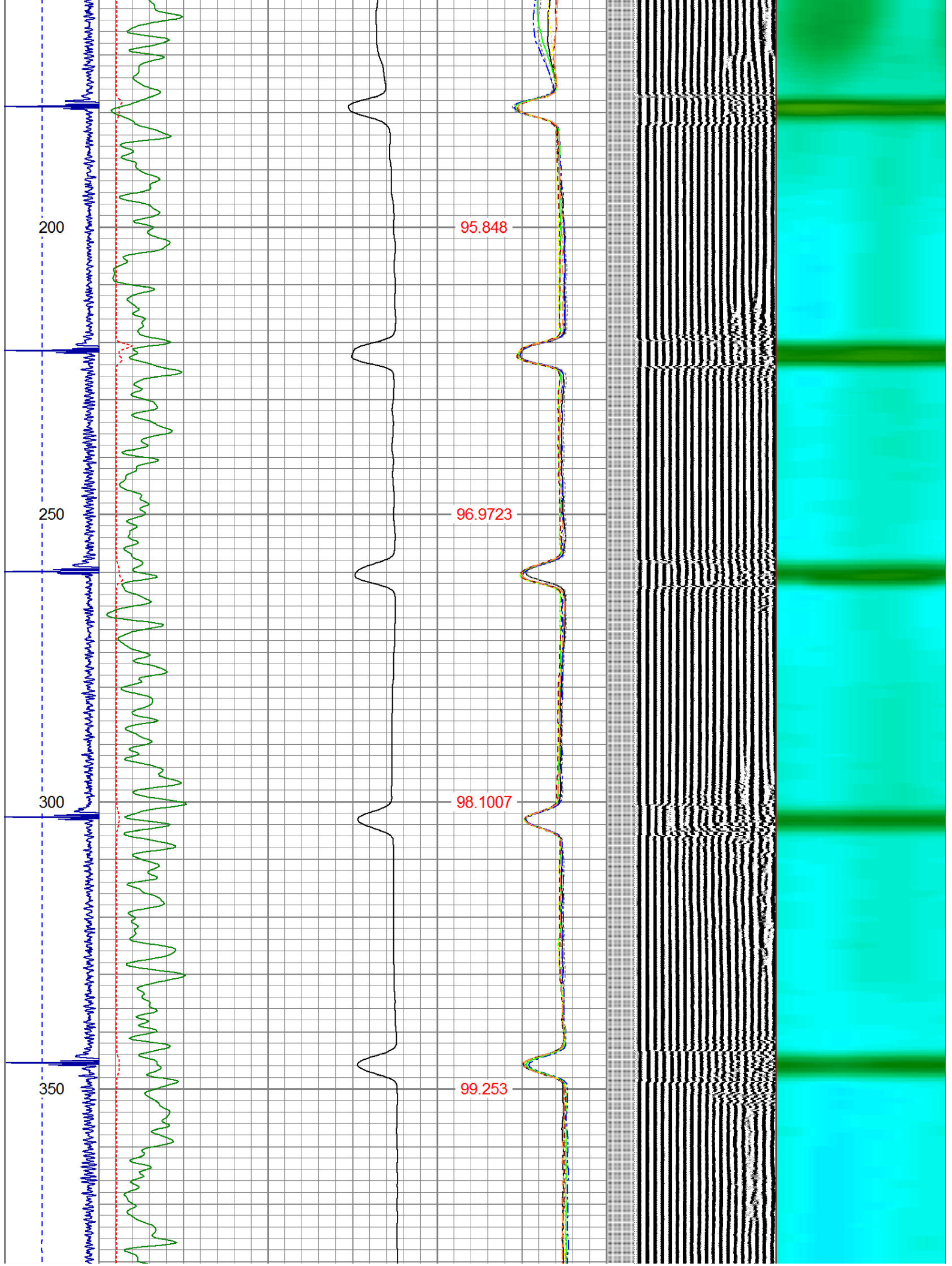
RAN CBL TO VERIFY CEMENT BOND
THANK YOU FOR USING WARRIOR !!!!!!!

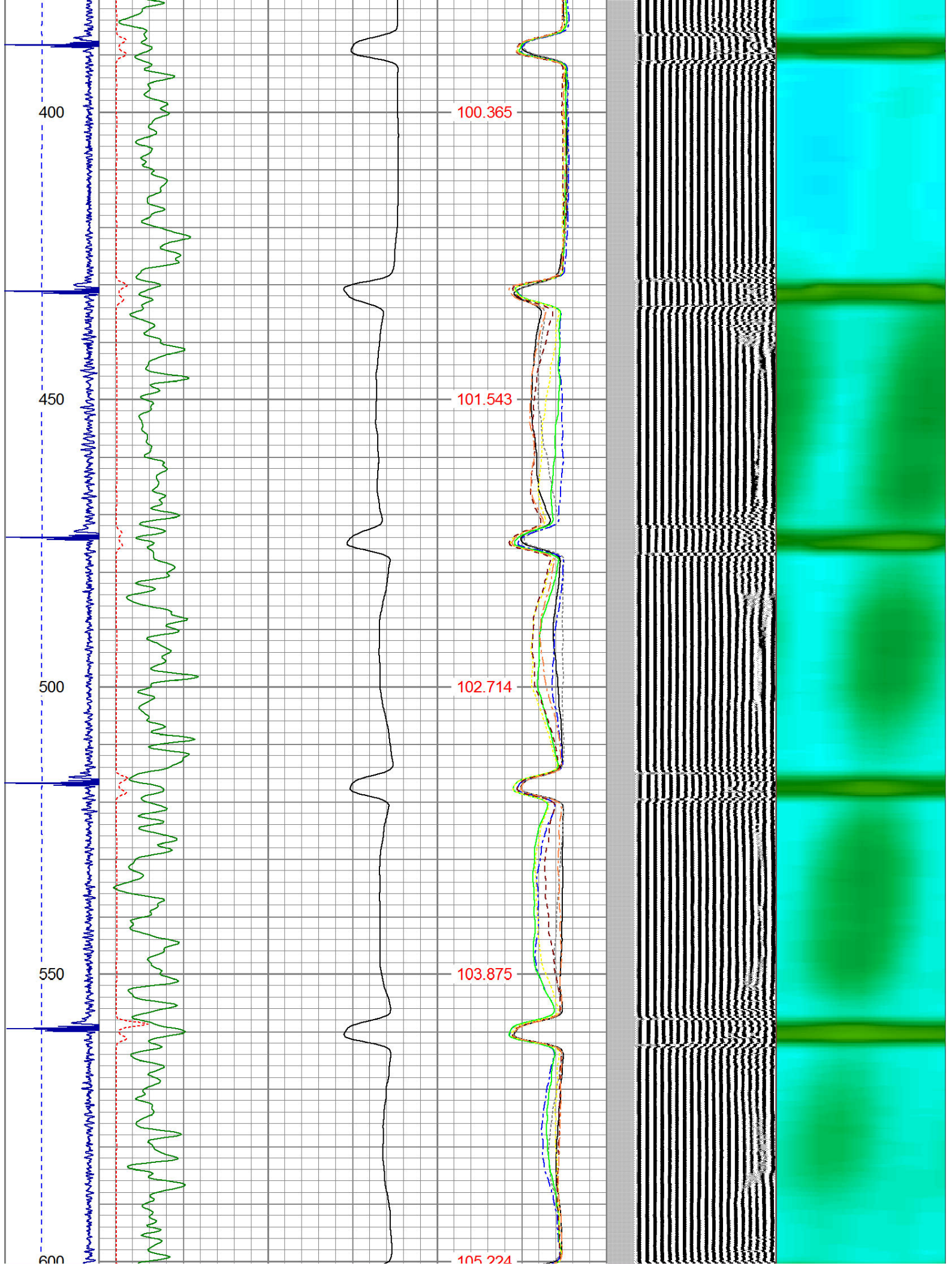
Sensor	Offset (ft)	Schematic	Description	Len (ft)	OD (in)	Wt (lb)
			1_4	1.00	1.36	5.00

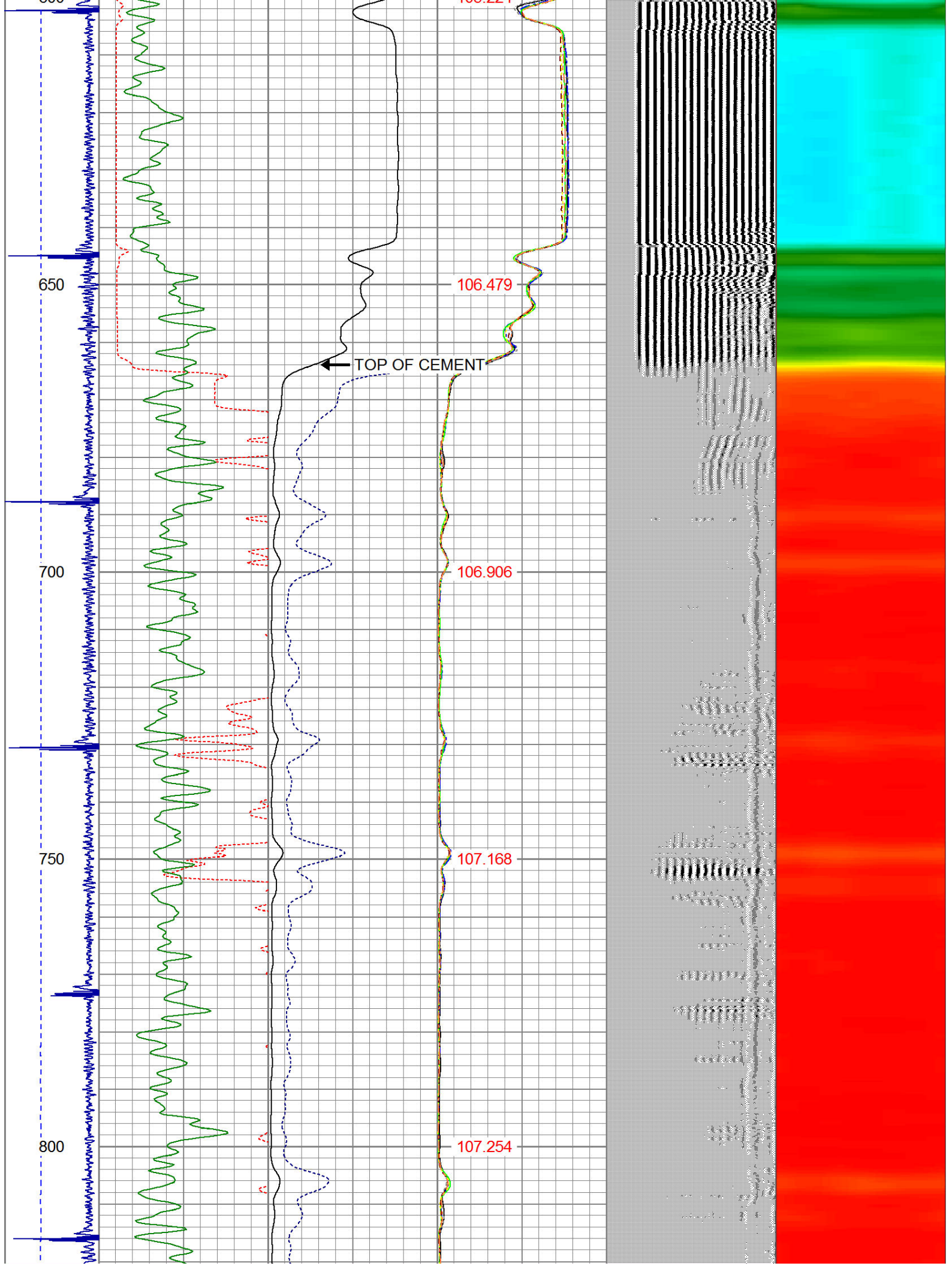
			PTS275	2.83	2.75	
HEADVOLT	16.13					
IntTemp	14.71					
WVF3FT	11.46		RBT-Probe (Base)	8.92	2.75	90.00
WVFCAL	11.46		Probe Radii Bond Tool with Digital Telemetry			
WVFS1	11.46					
WVFS2	11.46					
WVFS3	11.46					
WVFS4	11.46					
WVFS5	11.46					
WVFS6	11.46					
WVFS7	11.46					
WVFS8	11.46					
WVF5FT	10.46					
CNLSC	6.00		CNT-Probe_B (275)	2.88	2.75	40.00
CNSSC	5.17		6 bow centralizer			
CCL	3.64					
			GR-Probe (275)	4.33	2.75	30.00
			Probe 2.75"			
GR	0.90					
Dataset: sherwood I30-30d.db: field/well/run1/pass2 Total Length: 19.96 ft Total Weight: 165.00 lb O.D. 2.75 in						

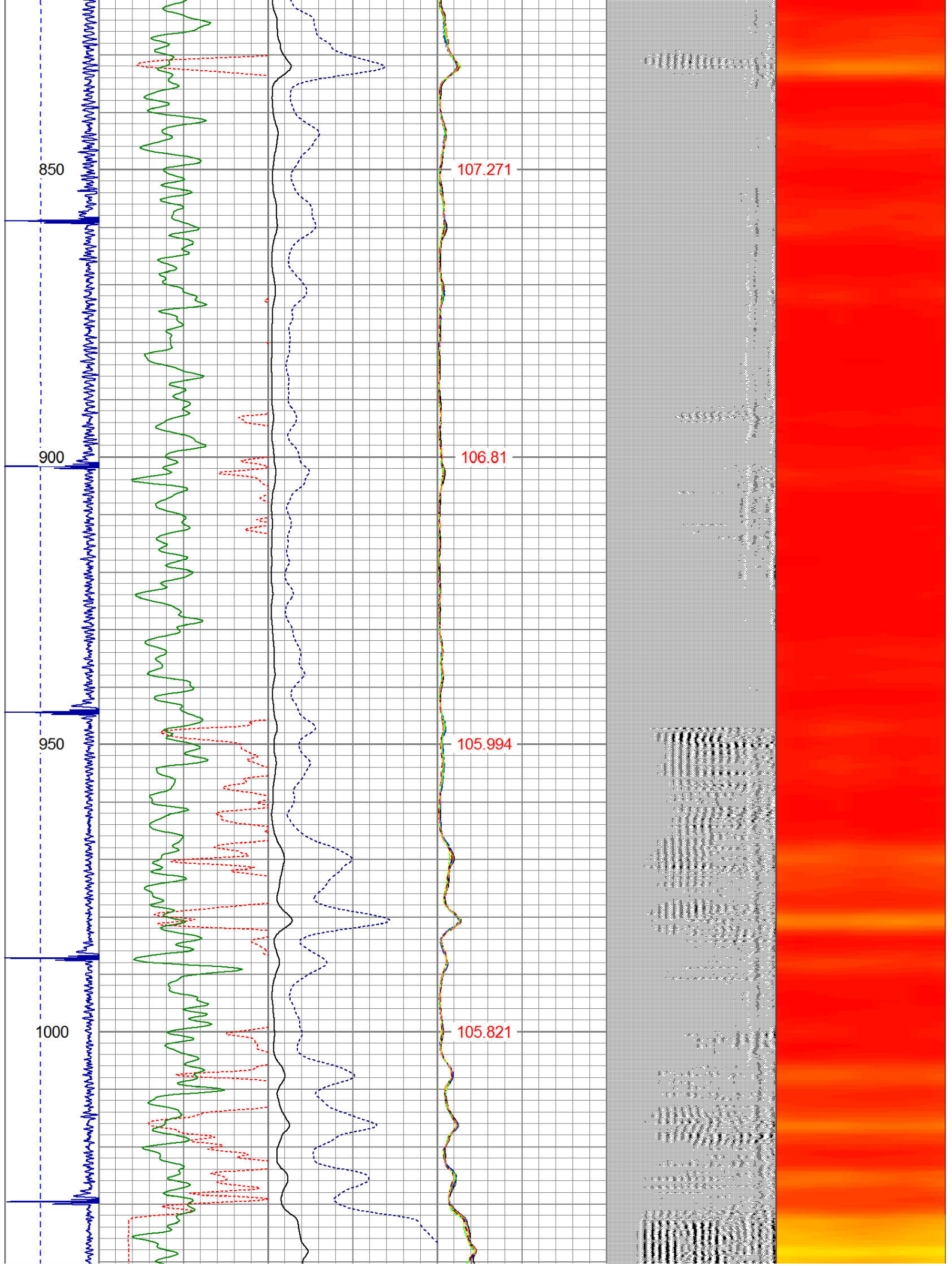
-9	CCL	1	200	TT (usec)	800	0	AMP (mV)	100	0	AMPS1	100	200	VDL	1200	1	Cement Map	8
LSPD (ft/min)	0	250	0	GR (GAPI)	200	0	AMPx5 (mV)	20	0	AMPS2	100		1		1		100
			200	GR (GAPI)	400				0	AMPS4	100						
									0	AMPS5	100						
									0	AMPS6	100						
									0	AMPS7	100						
									0	AMPS8	100						
IntTemp (degF)																	

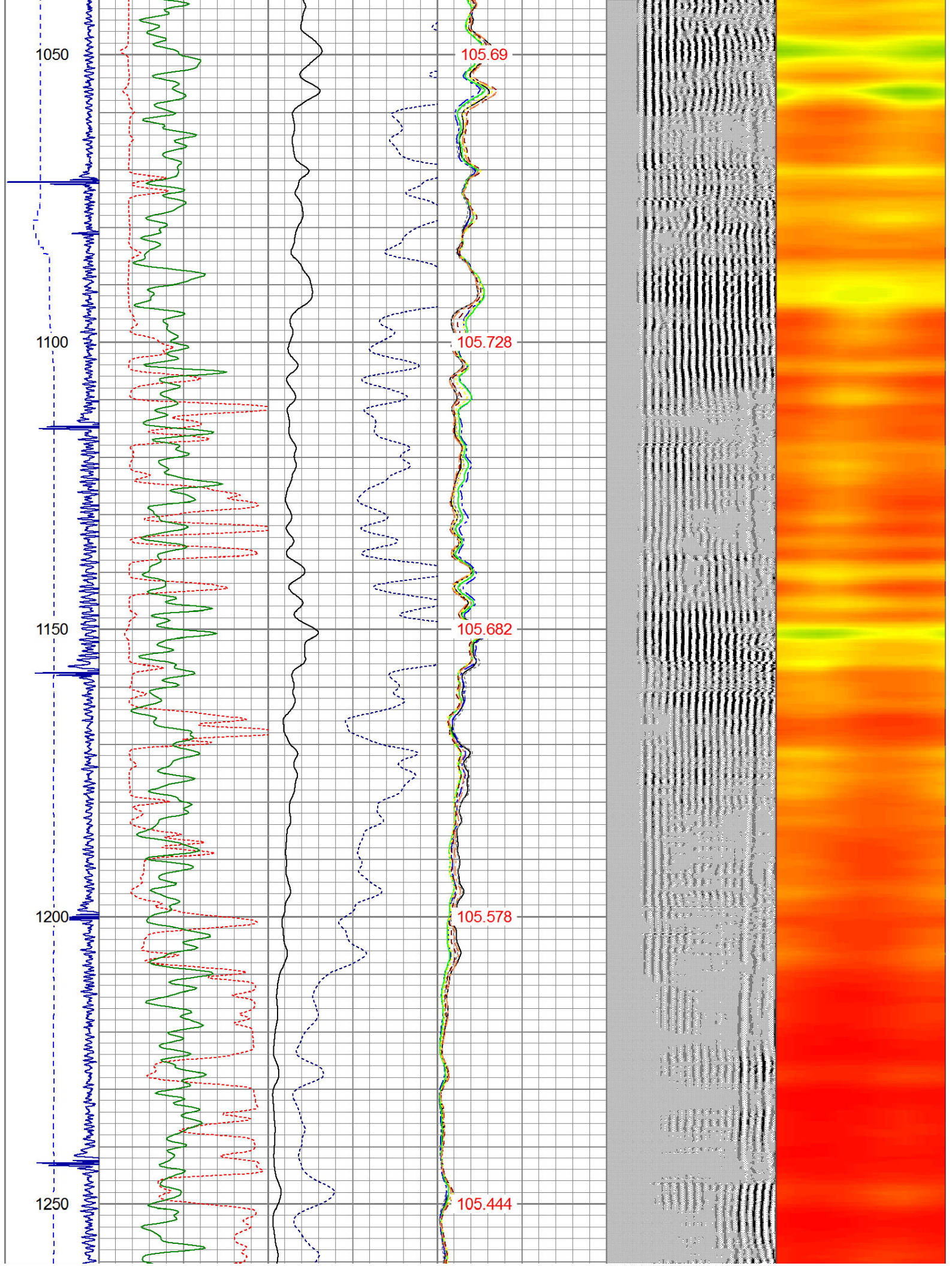


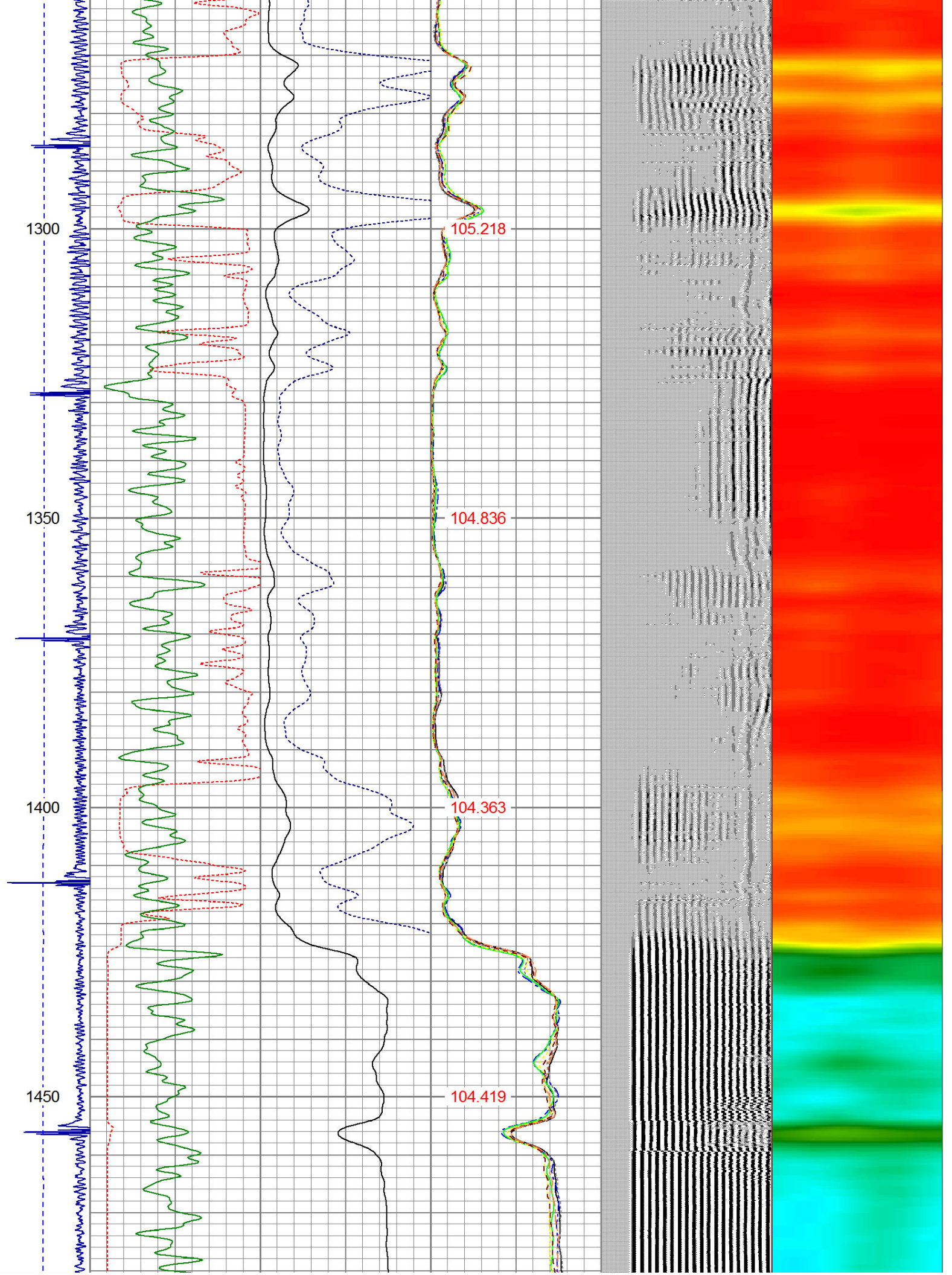


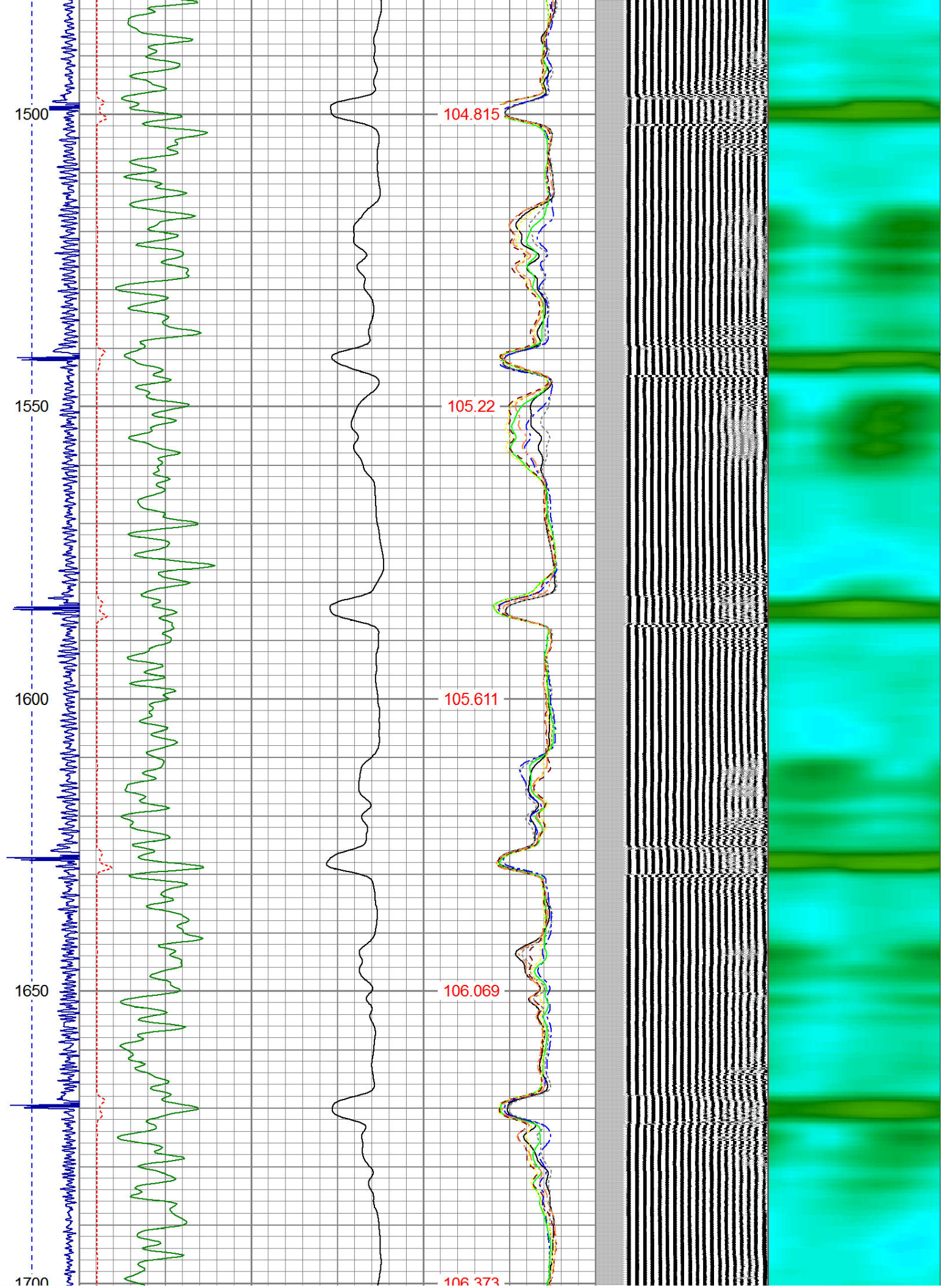


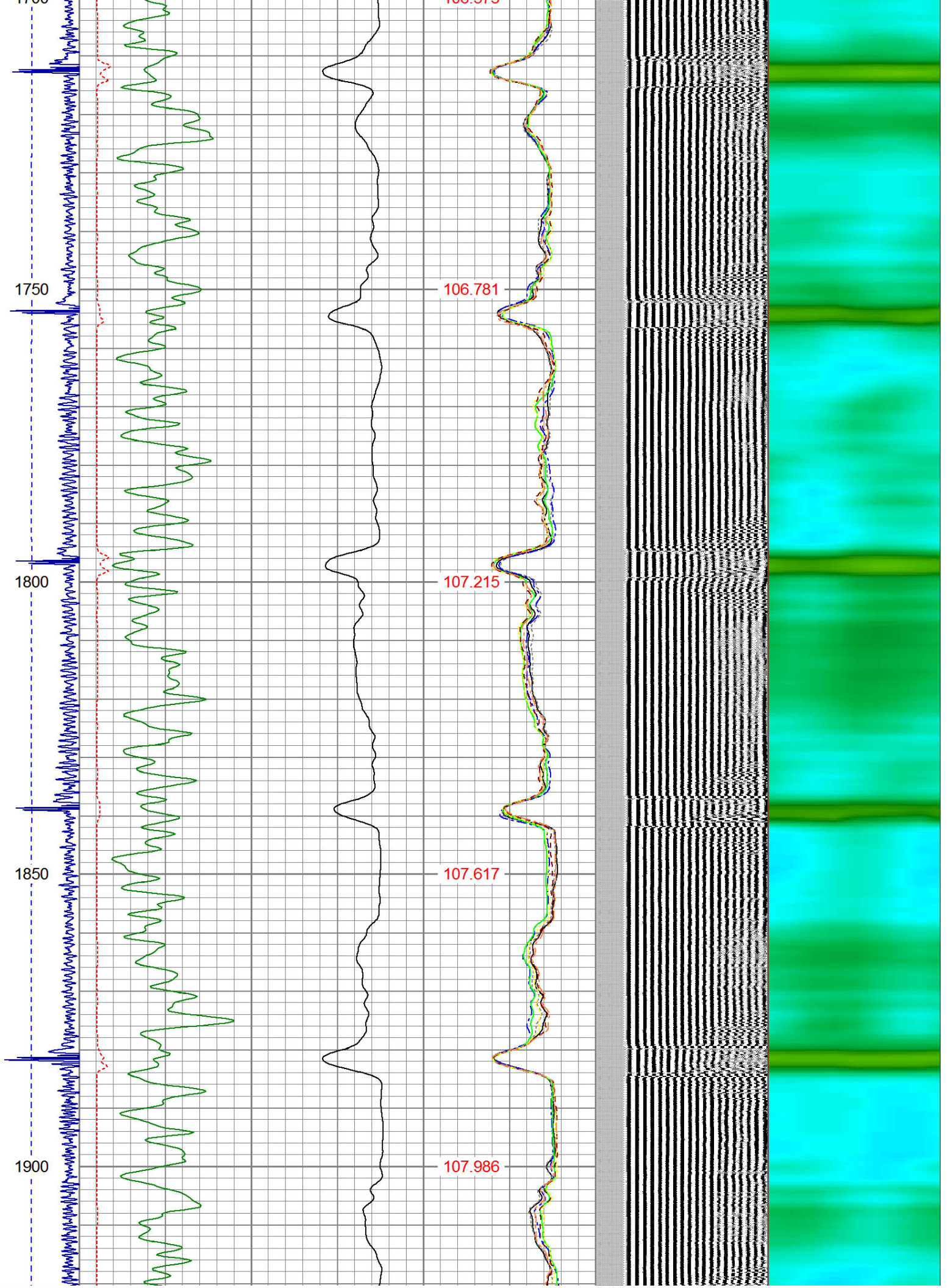


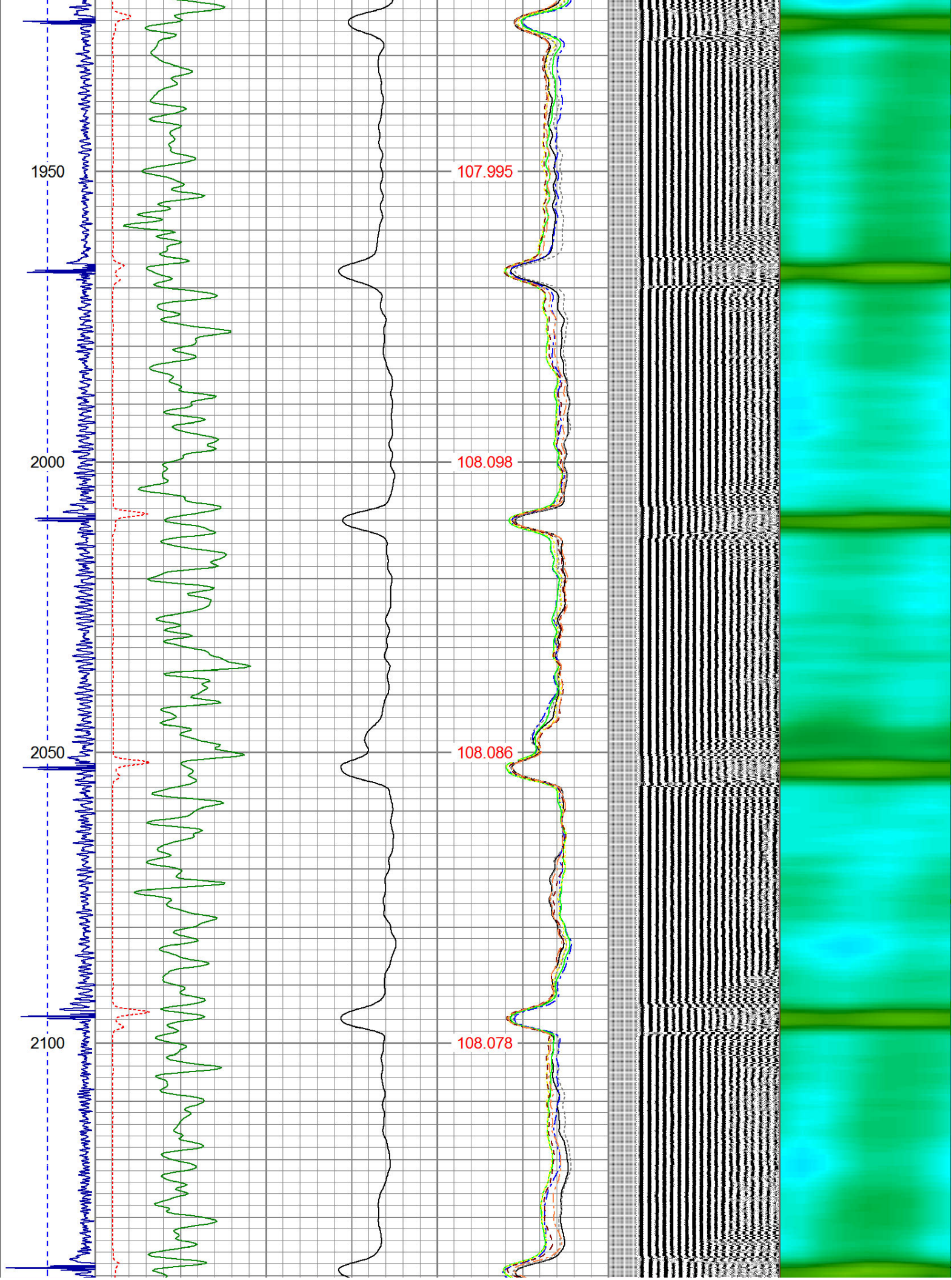


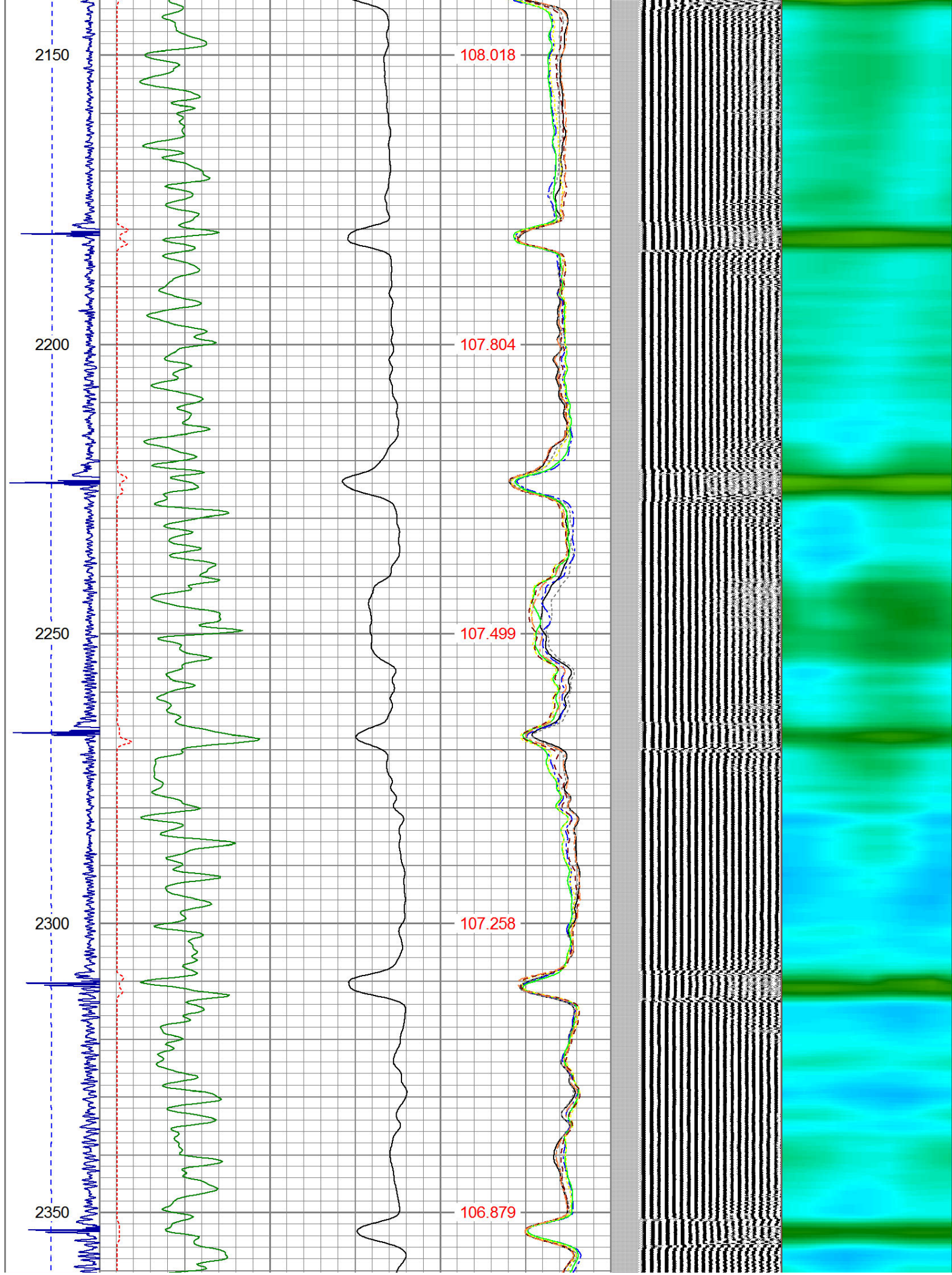


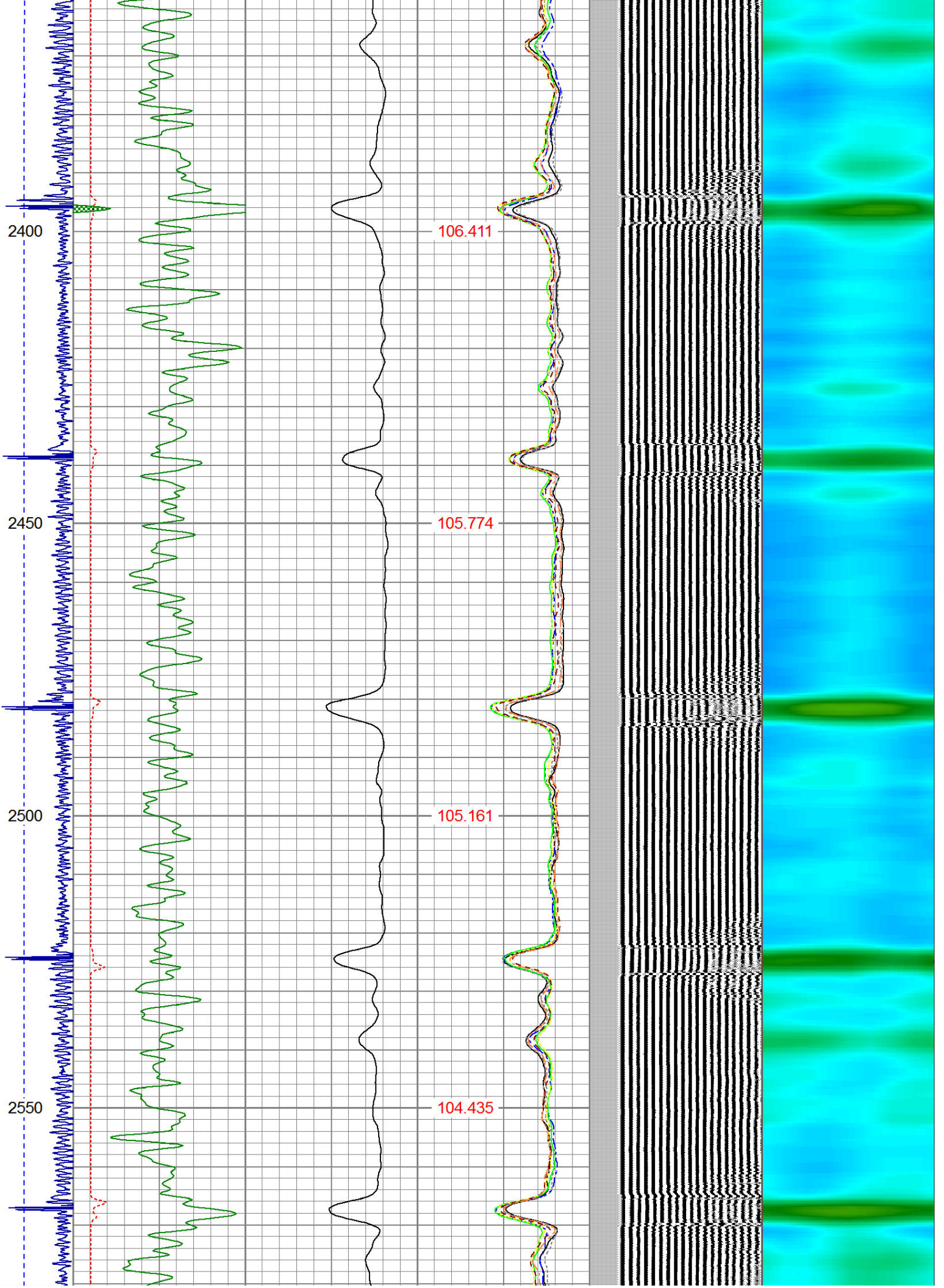


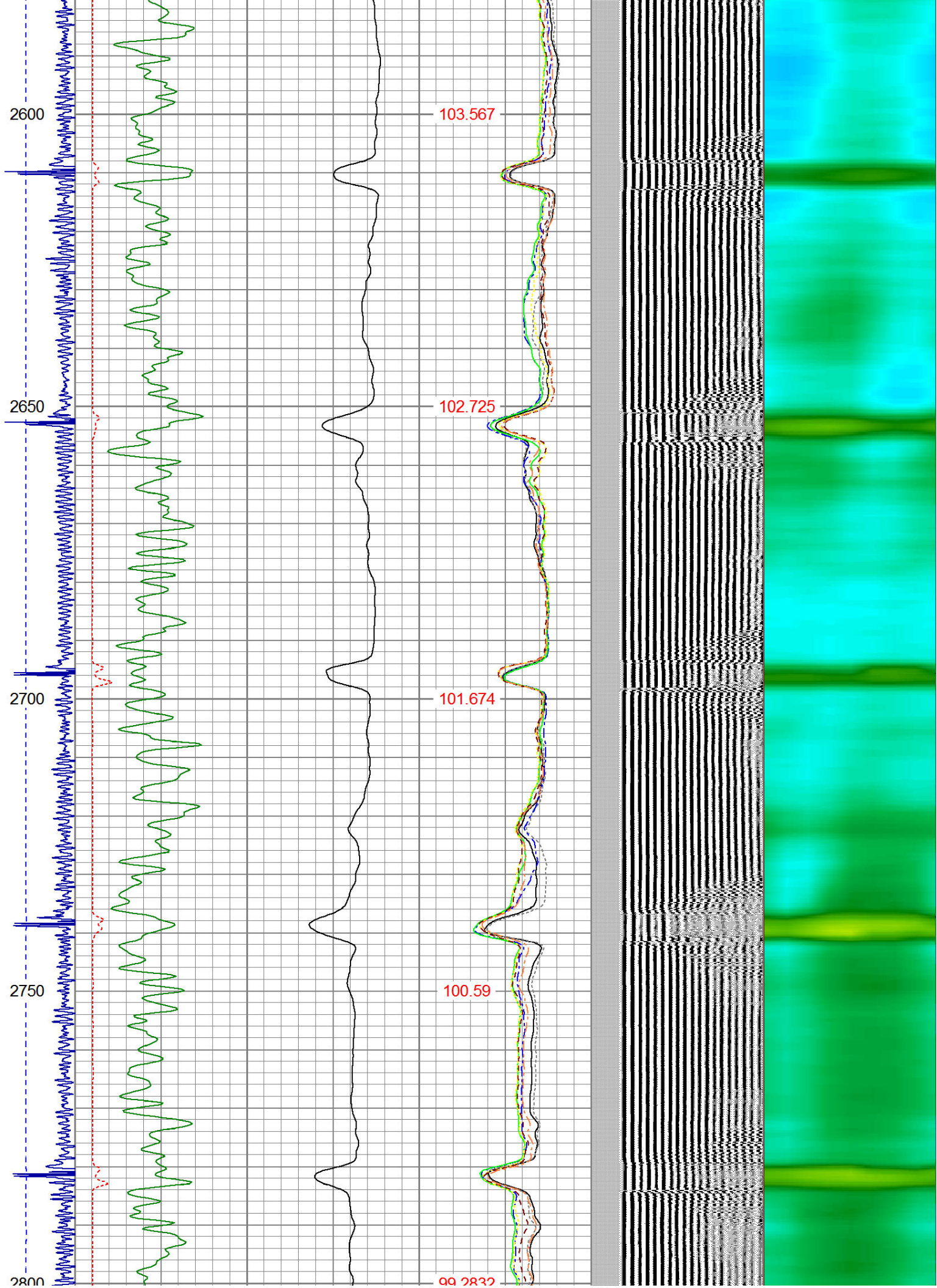


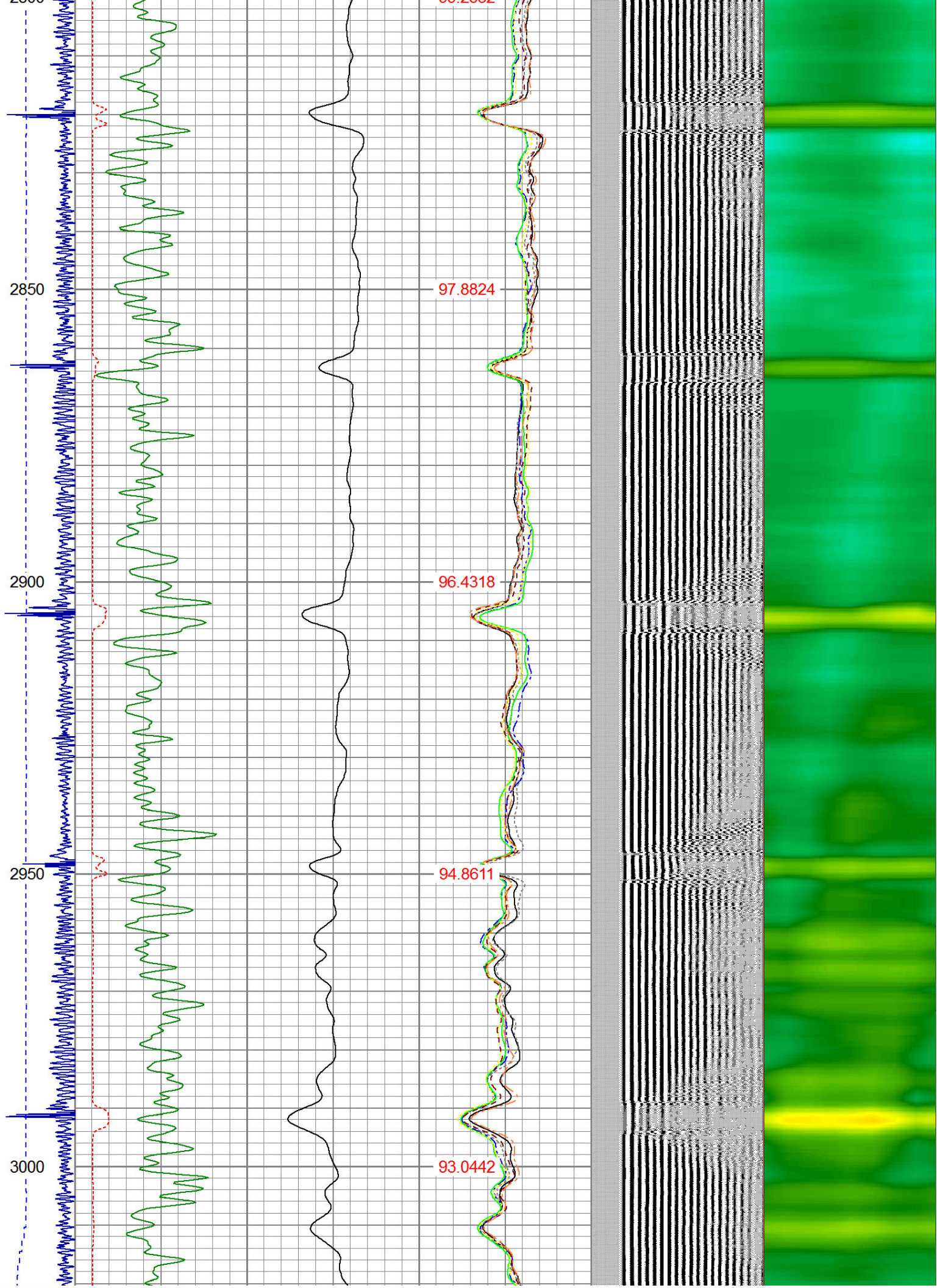


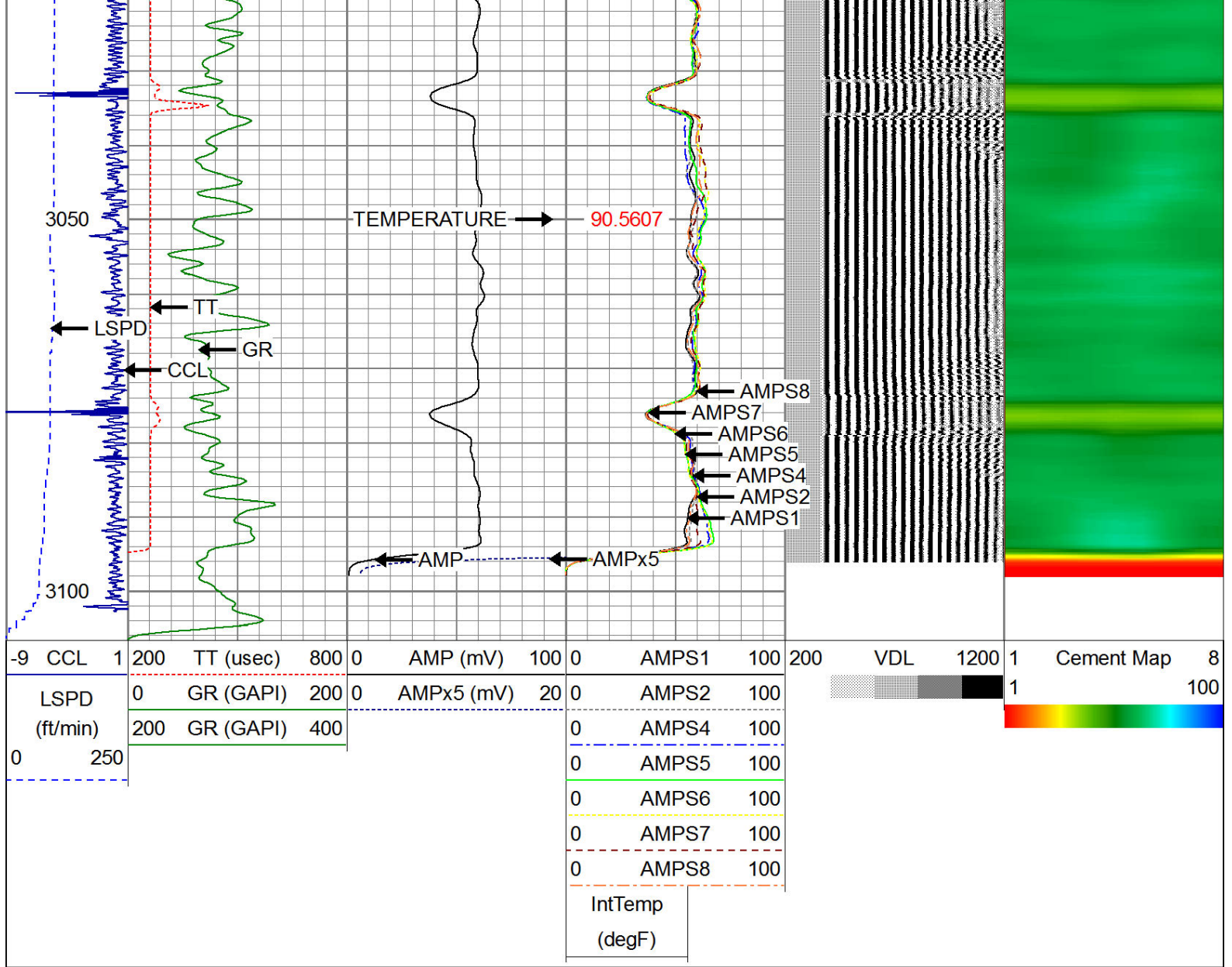












WARRIOR
ENERGY SERVICES

Company KERR McGEE OIL AND GAS
Well SHERWOOD L30-30D
Field WATTENBERG
County WELD
State CO