

Final Reclamation Inspection

07/14/2016

Operator: H&R Well Services

Location ID: 389360

Logan County, CO

SESE Section 10 T10N R53W

Aaron Trujillo

Reclamation Specialist

COGCC



Figure 1: Photo of GPS confirming well locaiton.



Figure 2: Photo taken from the area of the well, on the north end of the location, facing northwest. Photo shows well site has not achieved uniform vegetative cover. Photo shows gravel remaining at well site. 6' measuring stick for reference.



07.14.2016 14:26

Figure 3: Photo taken from the area of the well, on the north end of the location, facing south. Photo shows well site has not achieved uniform vegetative cover. Photo shows gravel remaining at well site. 6' measuring stick for reference.



07.14.2016 14:28

Figure 4: Photo taken from north end of the possible salt kill, facing southeast.



Figure 5: Photo taken from north end of the possible salt kill, facing south.



Figure 6: Photo taken from north end of the possible salt kill, facing southwest.



Figure 7: Photo taken from the possible salt kill. Photo shows pipe equipment and debris found in the possible salt kill. 6' measuring stick for reference.



07.14.2016 14:28

Figure 8: Photo taken from the possible salt kill. Photo shows pipe equipment and debris found in the possible salt kill. 6' measuring stick for reference.



07.14.2016 14:30

Figure 9: Photo taken from the west end of the possible salt kill, facing east. Photo shows degradation occurring in the area due to stormwater erosion.



Figure 10: Photo taken from the possible salt kill. Photo shows pipe equipment and debris found in the possible salt kill. 6' measuring stick for reference.



Figure 11: Photo taken from the east end of the possible salt kill, facing west. Photo shows pipe equipment and debris. 6' measuring stick for reference.



07.14.2016 14:32

Figure 12: Photo taken from the east end of the possible salt kill, facing west. Photo shows pipe equipment and debris. 6' measuring stick for reference.



Figure 13: Photo taken from the east end of the possible salt kill. Photo shows pipe equipment on location with oily substance seeping from pipe onto soil.



Figure 14: Photo taken from the east end of the possible salt kill, facing southwest. Photo shows degradation occurring in the area due to stormwater erosion.



Figure 15: Photo taken from the south end of the possible salt kill, facing northeast. Photo shows degradation occurring in the area due to stormwater erosion.



Figure 16: 1998 aerial imagery of well site, location and possible salt kill. Records show well PA 1995.

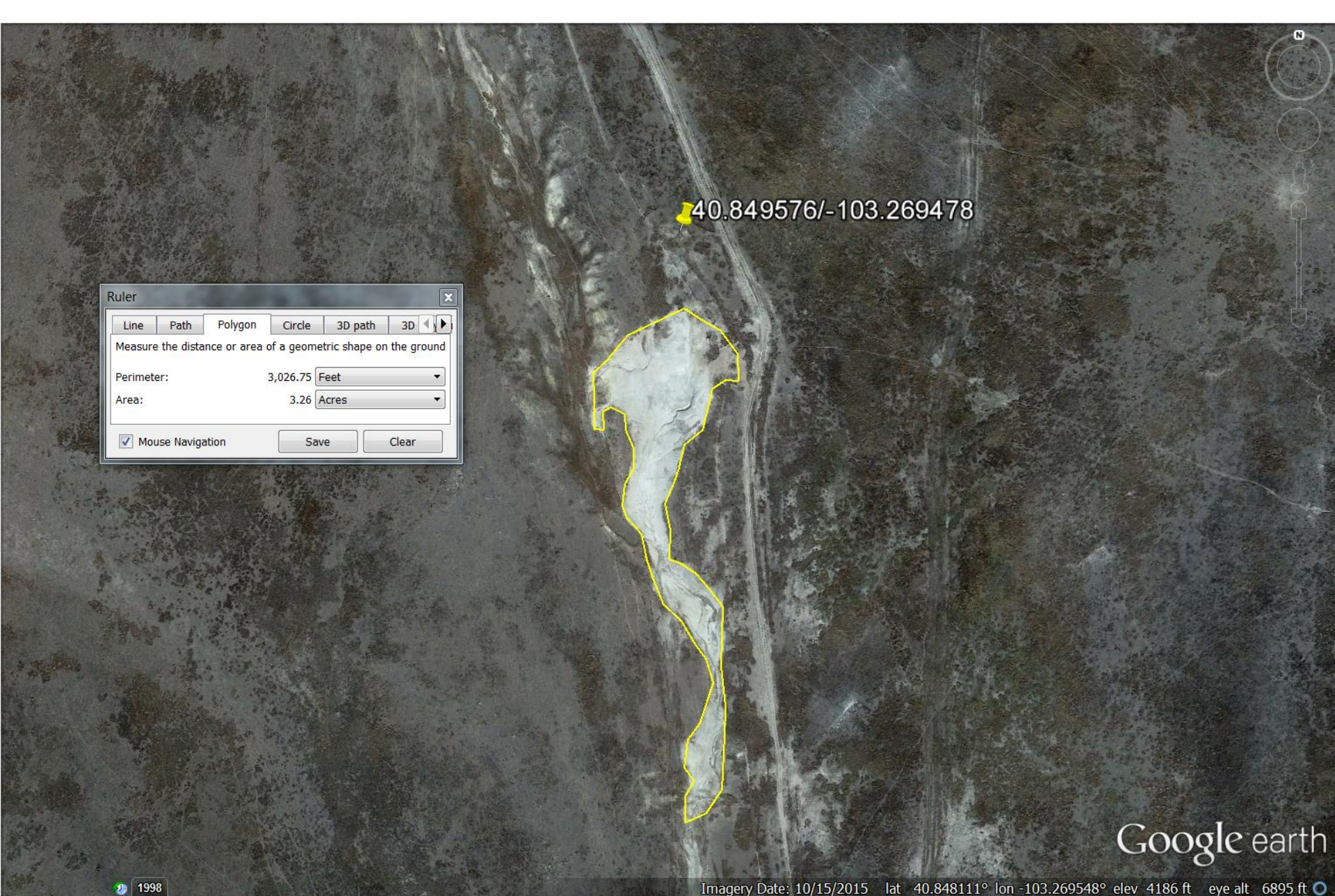


Figure 17: Most current aerial imagery (2015) of well site, location and possible salt kill. Approximate area of possible salt kill site is 3.26 acres.