

PIONEER
Pioneer Energy Services

**RADIAL BOND LOG
WITH GAMMA RAY**

Company: **East Chyenne Gas Storage, LLC**
Well: **ECGS 6-18 WP-D011-2**
Field: **West Peetz**
County: **Colorado**
State: **Colorado**

Location: **APR # : 050150490000**
Other Services:

Well	ECGS 6-18 WP-D011-2	Company	East Chyenne Gas Storage, LLC
Field	West Peetz	Well	ECGS 6-18 WP-D011-2
County	Colorado	Field	West Peetz
State	Colorado	County	Colorado
Location	APR # : 050150490000	State	Colorado
Other Services		Location	APR # : 050150490000

SEC 6	TWP 11N	RGE 62W	Elevation	4507
Permian Datum	GL	14	Above Perm. Datum	
Comp. Well	West Peetz	Drilling Measured From	KB	14
Field	West Peetz	Drilling Measured From	KB	14
State	Colorado	Drilling Measured From	KB	14
Date of Service	7 July 2018	Drilling Measured From	KB	14
Run Number	One	Drilling Measured From	KB	14
Depth to Top of Borehole	1579'	Drilling Measured From	KB	14
Bottom Log Interval	1579' - 1600'	Drilling Measured From	KB	14
Open Hole Size	8.75"	Drilling Measured From	KB	14
Type Fluid	Water	Drilling Measured From	KB	14
Fluid Density	8.3318 / USG	Drilling Measured From	KB	14
Max. Recorded Temperature	81.1 deg F	Drilling Measured From	KB	14
Max. Wellhead Pressure	Zero	Drilling Measured From	KB	14
Estimated Cement Top	914	Drilling Measured From	KB	14
Wellhead Connection	N/A	Drilling Measured From	KB	14

Waters Size: 9022
F102
Magan
Cory Burns
Recorded By: M G Orliman
Size: 9625"
7"
354'
Surface
Bottom: 1222'
5427'

<<< Fold Here >>>

All interpretations are opinions based on inferences from electrical or other measurements and Pioneer Wireline Services, LLC cannot and does not guarantee the accuracy or correctness of any interpretation, and Pioneer Wireline Services, LLC will not be liable or responsible for any loss, costs, damages, or expenses incurred or sustained by anyone resulting from any interpretation made by any of our officers, agents or employees.

Comments
N/A DENOTES NOT AVAILABLE OR NON-APPLICABLE.

THANK YOU FOR USING PIONEER ENERGY SERVICES!
Your Pioneer Energy Services Crew Tool Data - Services Serial Number

Engineer: Cory Burns
Operator: Brent Roddy
Operator:

Log Variables Database: C:\ProgramData\Warrior\Data\ecgs6-18wp-d011-2.db
Dataset: field\well\run1\pass7_vars_


Top - Bottom						
BHTEMP_Src	BOREID	BOTTEMP	CASETHCK	CASEWGHT	MAXAMPL	
TEMP	in	degF	in	lb/ft	mV	
1	8.75	100	7	26	0	
MINAMPL	MINATTN	PERFS	PPT	SRFTEMP	TDEPTH	
mV	db/ft		usec	degF	ft	
1	0.08	0	0	0	0	

Variable Description

BHTEMP_Src : BHTEMP Input Source Selector
BOREID : Borehole I.D.
BOTTEMP : Borehole Hole Temperature
CASETHCK : Casing O.D.
CASEWGHT : Casing Weight
MAXAMPL : Maximum Amplitude

MINAMPL : Minimum Amplitude
MINATTN : Minimum Attenuation
PERFS : Perforation Flag
PPT : Predicted Pipe Time
SRFTEMP : Surface Temperature
TDEPTH : Total Depth

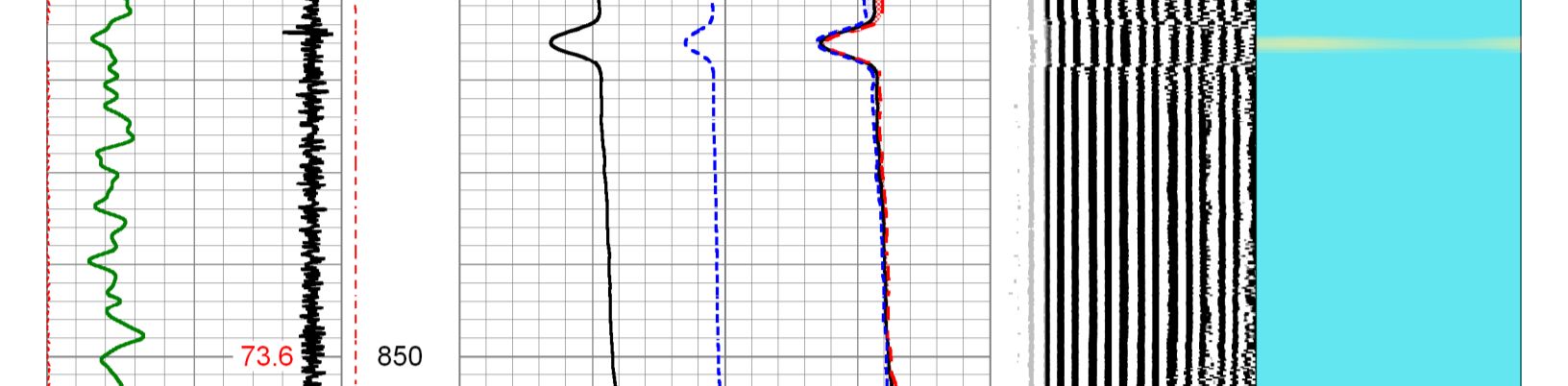
Main Pass



PIONEER
Pioneer Energy Services


Database File ecgs6-18wp-d011-2.db
Dataset Pathname pass7
Presentation Format pinr_scb1
Dataset Creation Thu Jul 21 09:41:25 2016
Charted by Depth in Feet scaled 1:240

3' Travel Time	Line Tension	3' Amplitude	Sector	200	VDL	1200	1	Sector Map	8
(usec)	(3000)	(mV)	Amplitude Average						
295	0	0	0	150				10	60
-9		3' Amplified Amplitude X 5	Sector						
		(mV)	Amplitude Maximum						
		0	0	150					
		Bond Index	Sector						
		0	0	150					
			Amplitude Minimum						
			0	150					



3' Travel Time	Line Tension	3' Amplitude	Sector	200	VDL	1200	1	Sector Map	8
(usec)	(3000)	(mV)	Amplitude Average						
295	0	0	0	150				10	60
-9		3' Amplified Amplitude X 5	Sector						
		(mV)	Amplitude Maximum						
		0	0	150					
		Bond Index	Sector						
		0	0	150					
			Amplitude Minimum						
			0	150					

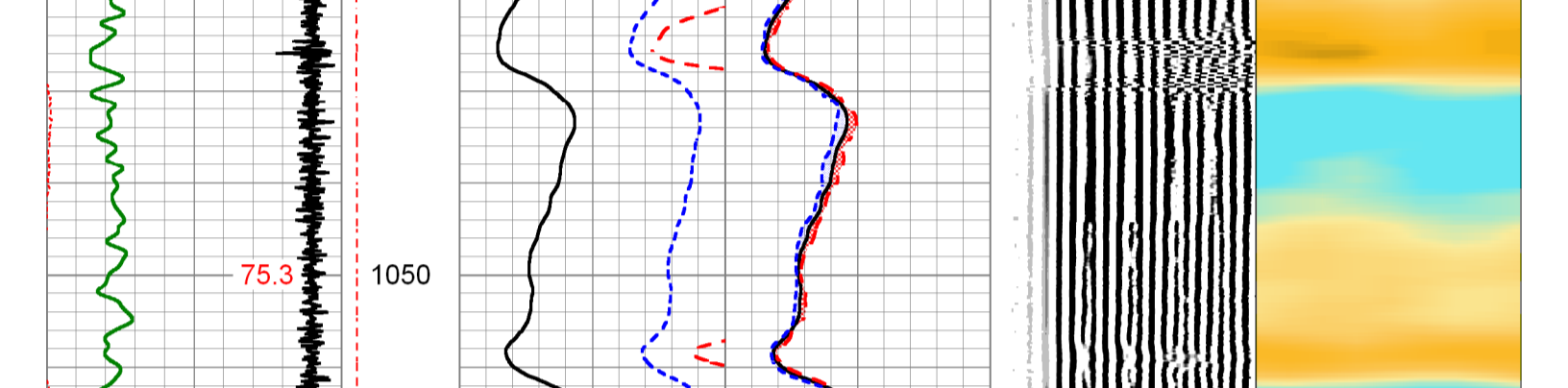
Repeat Pass



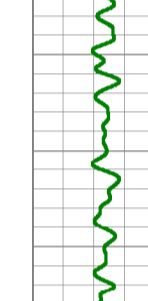
PIONEER
Pioneer Energy Services

Database File ecgs6-18wp-d011-2.db
Dataset Pathname pass6
Presentation Format pinr_scb1
Dataset Creation Thu Jul 21 09:36:53 2016
Charted by Depth in Feet scaled 1:240

3' Travel Time	Line Tension	3' Amplitude	Sector	200	VDL	1200	1	Sector Map	8
(usec)	(3000)	(mV)	Amplitude Average						
295	0	0	0	150				10	60
-9		3' Amplified Amplitude X 5	Sector						
		(mV)	Amplitude Maximum						
		0	0	150					
		Bond Index	Sector						
		0	0	150					
			Amplitude Minimum						
			0	150					



3' Travel Time	Line Tension	3' Amplitude	Sector	200	VDL	1200	1	Sector Map	8
(usec)	(3000)	(mV)	Amplitude Average						
295	0	0	0	150				10	60
-9		3' Amplified Amplitude X 5	Sector						
		(mV)	Amplitude Maximum						
		0	0	150					
		Bond Index	Sector						
		0	0	150					
			Amplitude Minimum						
			0	150					



PIONEER
Pioneer Energy Services

Company: **East Chyenne Gas Storage, LLC**
Well: **ECGS 6-18 WP-D011-2**
Field: **West Peetz**
County: **Colorado**
State: **Colorado**