

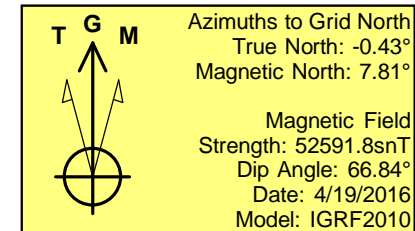
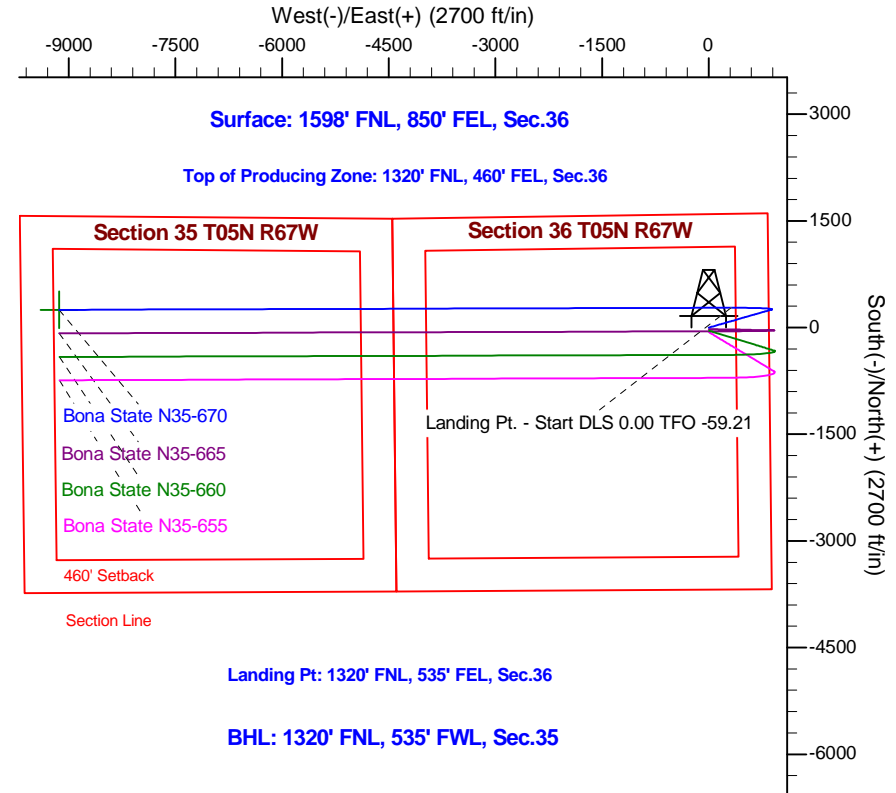
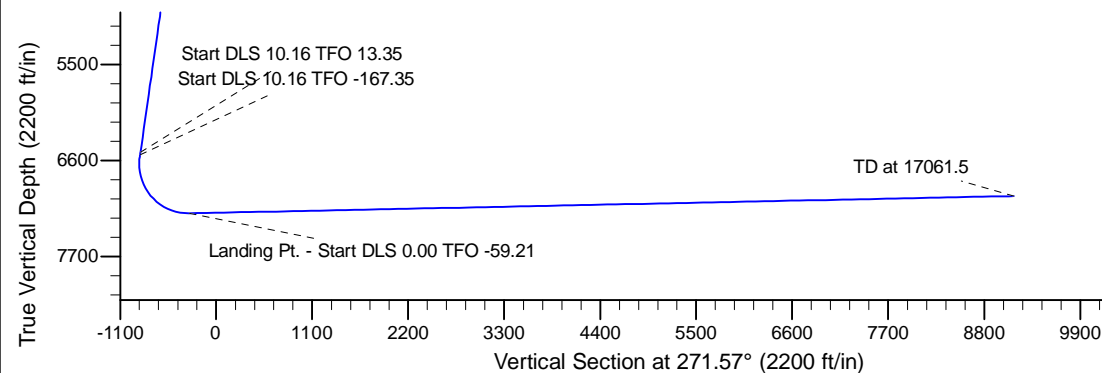
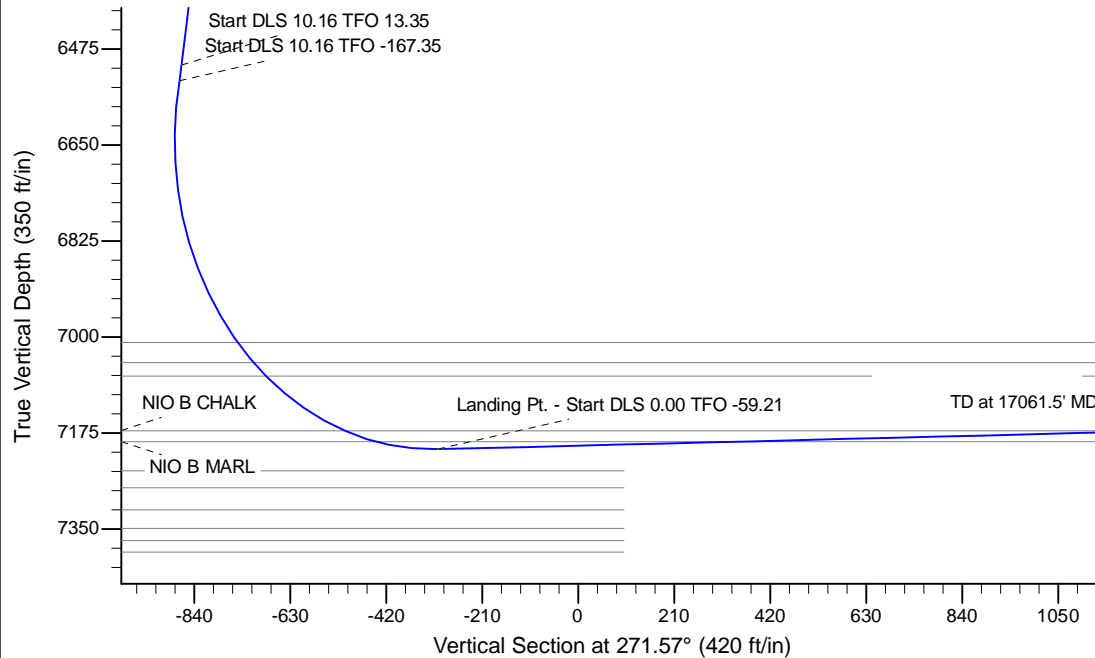
Project: Wattenberg Field
Site: N (Section 36-T05N-R67W) Weld County, CO
Well: Bona State N35-670
Wellbore: Original Drilling
Design: APD - Rev 0

Northern Region Drilling - Working

Geodetic System: US State Plane 1983
Datum: North American Datum 1983
Ellipsoid: GRS 1980
Zone: Colorado Northern Zone
System Datum: Mean Sea Level

SECTION DETAILS

Sec	MD	Inc	Azi	TVD	+N/-S	+E/-W	Dleg	TFace	VSec	Target
1	0.0	0.00	0.00	0.0	0.0	0.0	0.00	0.00	0.0	
2	200.0	0.00	0.00	200.0	0.0	0.0	0.00	0.00	0.0	
3	625.0	8.50	74.00	623.4	8.7	30.2	2.00	74.00	-30.0	
4	6570.9	8.50	74.00	6504.0	250.9	875.1	0.00	0.00	-867.9	
5	6600.0	11.40	77.46	6532.7	252.1	879.9	10.16	13.35	-872.7	
6	7606.8	91.20	269.82	7204.5	280.0	315.0	10.16	-167.35	-307.2	
7	17061.5	91.20	269.82	7006.4	250.1	-9137.5	0.00	-59.21	9140.9	Bona State N35-670 BHL 1320'FNL, 535'FWL



WELL DETAILS: Bona State N35-670

Ground Level: 4875.0					
	Northing	Easting	Latitude	Longitude	
0.0	0.0	1374289.85	3185297.59	40.358920	-104.835080

Plan: APD - Rev 0 (Bona State N35-670/Original Drilling)

Created By: Shailey Jewell

Date: 9:40, April 20 2016

OK to submit with 2A as per Noble Drilling
5/24/2016 10:20