

1625 Broadway  
Suite 2000  
Denver, CO 80202  
  
Tel: 303.228.4000  
Fax: 303.228.4280  
www.nobleenergyinc.com



August 1, 2016

Colorado Oil and Gas Conservation Commission  
The Chancery Building  
1120 Lincoln Street, Suite 801  
Denver, CO 80203  
Attn: Mr. Matt Lepore, Director

RE: Bona State N35-660, Doc # 401056288  
Section 36: SE/4NE/4 Township 5 North, Range 67 West, 6th P.M.  
Weld County, Colorado

Dear Director:

Noble Energy, Inc. ("NEI") is planning to drill the captioned boundary well in accordance with the provisions of COGCC Rule 318A.e.

NEI's proposed wellbore spacing unit consists of the Sec 35: S/2N/2, Sec 36: S/2N/2, T5N, R67W, creating a 320-acre wellbore spacing unit for the Codell formation. NEI is not the only owner within the proposed wellbore spacing unit and as such provided notice to the remaining owner(s) within said proposed spacing unit as required under COGCC Rule 318A.e.(5). Copies of the required notice letter(s) is/are on file at the NEI offices. The required thirty (30) day notice period has elapsed absent the receipt by NEI of an objection to said proposal by the owner(s) within the proposed spacing unit for this well.

Enclosed are copies of the following documents to assist you in your review and approval of NEI's proposed APD for the captioned well:

- Map & plat illustrating proposed wellbore spacing unit.

Thank you for your attention to the enclosed. NEI respectfully requests that the COGCC review the enclosed information and approve the Application for Permit to Drill the captioned well.

Sincerely,

*Susan Miller*

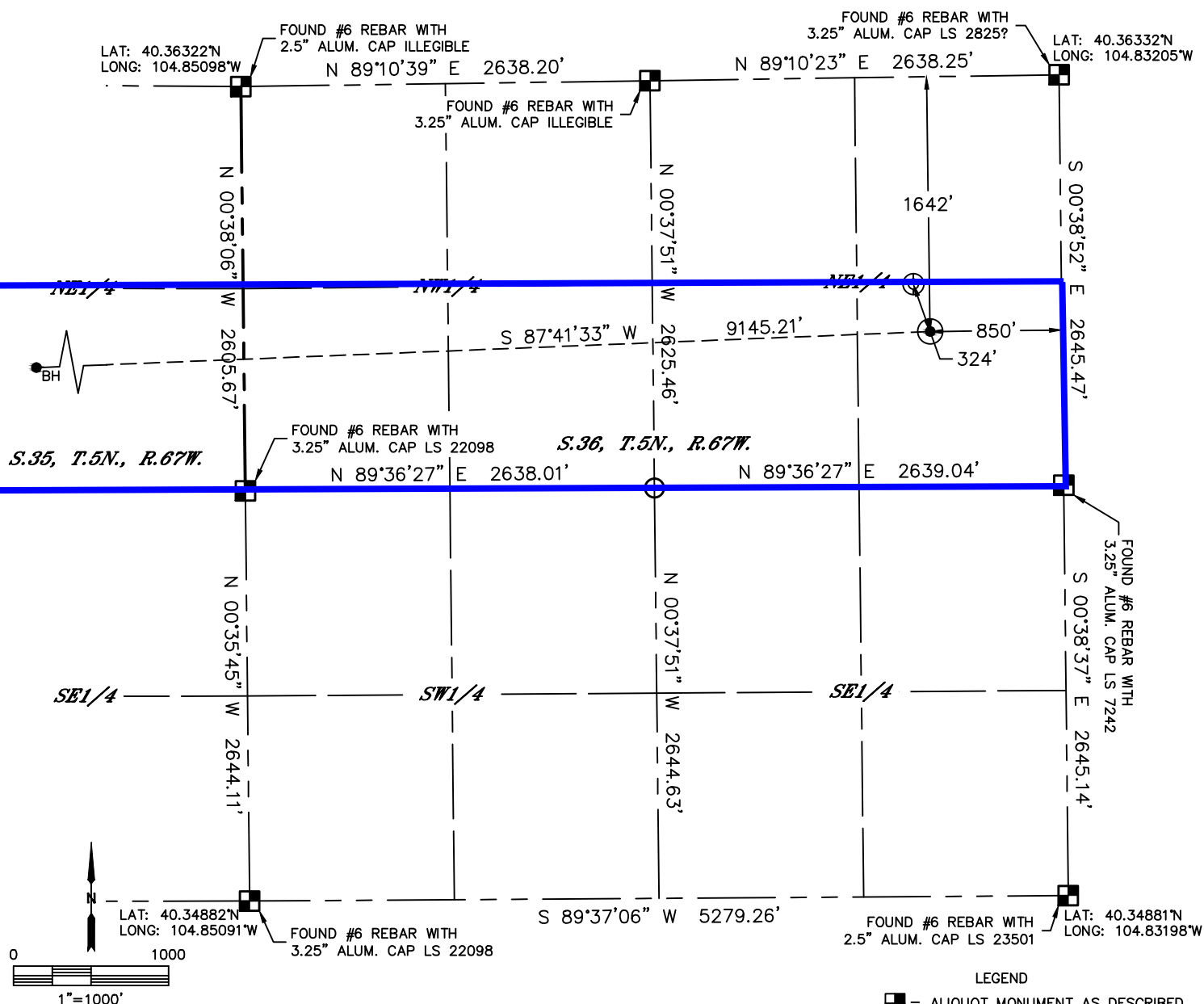
Susan Miller  
Regulatory Analyst II  
Noble Energy Inc.

Lat40°, Inc. 6250 W. 10th Street, Unit 2, Greeley, CO 970-515-5294

# LATITUDE & LONGITUDE EXHIBIT

BONA STATE N35-660

SECTION: 36  
TOWNSHIP: 5N  
RANGE: 67W  
6TH. P.M.  
WELD COUNTY, CO



CLIENT: NOBLE ENERGY						LANDMAN: NICK HAFFNER				
INSTRUMENT OPERATOR: BRIAN ROTTINGHAUS						SURVEY DATE: 3/29/2016		SURFACE USE: PASTURE		
SHL FOOTAGE				SHL LAT °	SHL LONG °	SHL PDOP	SHL ELEV (FT.)	SHL 1/4/1/4	SHL S-T-R	
1642	FNL	850	FEL	40.35880	-104.83507	1.6	4885	SENE	36-5-67	

BHL FOOTAGE				BHL LAT °	BHL LONG °	BHL S-T-R
1980	FNL	535	FWL	40.35797	-104.86786	35-5-67

<b>NEAREST EXISTING WELL IN SHL 1/4/1/4</b>	
EXISTING BERNHARDT STATE PC N 36-17	±324' NW
<b>NEAREST CULTURAL ITEMS</b>	
BUILDING	±847' N
BUILDING UNIT	±1500' N
HIGH OCCUPANCY BUILDING UNIT	5280'+
DESIGNATED OUTSIDE ACTIVITY AREA	5280'+
PUBLIC ROAD (COUNTY ROAD 25)	±843' E
ABOVE GROUND UTILITY	±823' E
RAILROAD	5280'+
PROPERTY LINE	±469' W

**NOTE:**

1) Bearings shown are Grid Bearings of the Colorado State Plane Coordinate System, North Zone, North American Datum 1983. The lineal dimensions as contained herein are based upon the "U.S. Survey Foot."

2) Distances to section lines measured at 90 degrees from said section lines.








3) Ground elevations are based on an observed GPS elevation (NAVD 1988 DATUM).

4) Latitude and Longitude shown are (NAD 83 DATUM).

5) IMPROVEMENTS: See LOCATION DRAWING for all visible improvements within 500' of oil and gas location.

6) This map does not represent a boundary survey.

### LEGEND

-  = ALIQUOT MONUMENT AS DESCRIBED  
 = CALCULATED POSITION  
 = SURFACE HOLE LOCATION (SHL)  
 = ENTRY POINT LOCATION (EP)  
 = BOTTOM HOLE LOCATION (BHL)  
 = EXISTING WELL  
 = ABANDONED WELL

*SHEET 1 OF 2*

DATE: 4/5/2016  
PROJECT#: 2016030

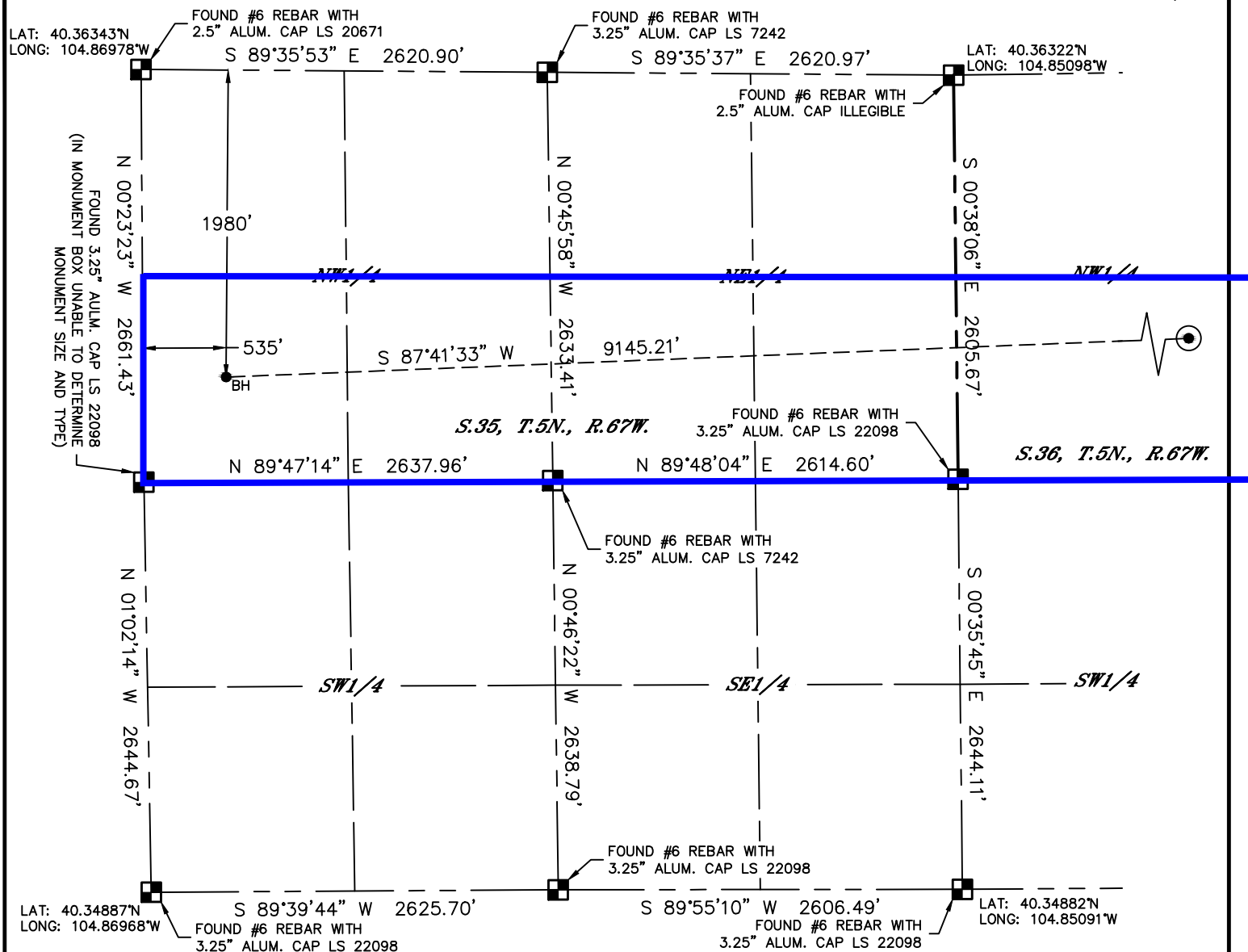


Lat40°, Inc. 6250 W. 10th Street, Unit 2, Greeley, CO 970-515-5294

# LATITUDE & LONGITUDE EXHIBIT

BONA N35-660

SECTION: 36  
TOWNSHIP: 5N  
RANGE: 67W  
6TH. P.M.  
WELD COUNTY, CO



## LEGEND

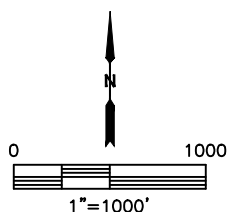
- = ALIQUOT MONUMENT AS DESCRIBED
- = CALCULATED POSITION
- = SURFACE HOLE LOCATION (SHL)
- ▲ = ENTRY POINT LOCATION (EP)
- BH = BOTTOM HOLE LOCATION (BHL)
- ⊕ = EXISTING WELL
- ⊖ = ABANDONED WELL

## NOTE:

- 1) Bearings shown are Grid Bearings of the Colorado State Plane Coordinate System, North Zone, North American Datum 1983. The lineal dimensions as contained herein are based upon the "U.S. Survey Foot."
- 2) Distances to section lines measured at 90 degrees from said section lines.
- 3) Ground elevations are based on an observed GPS elevation (NAVD 1988 DATUM).
- 4) Latitude and Longitude shown are (NAD 83 DATUM).
- 5) IMPROVEMENTS: See LOCATION DRAWING for all visible improvements within 500' of oil and gas location.
- 6) This map does not represent a boundary survey.

SHEET 2 OF 2

DATE: 4/5/2016  
PROJECT#: 2016030

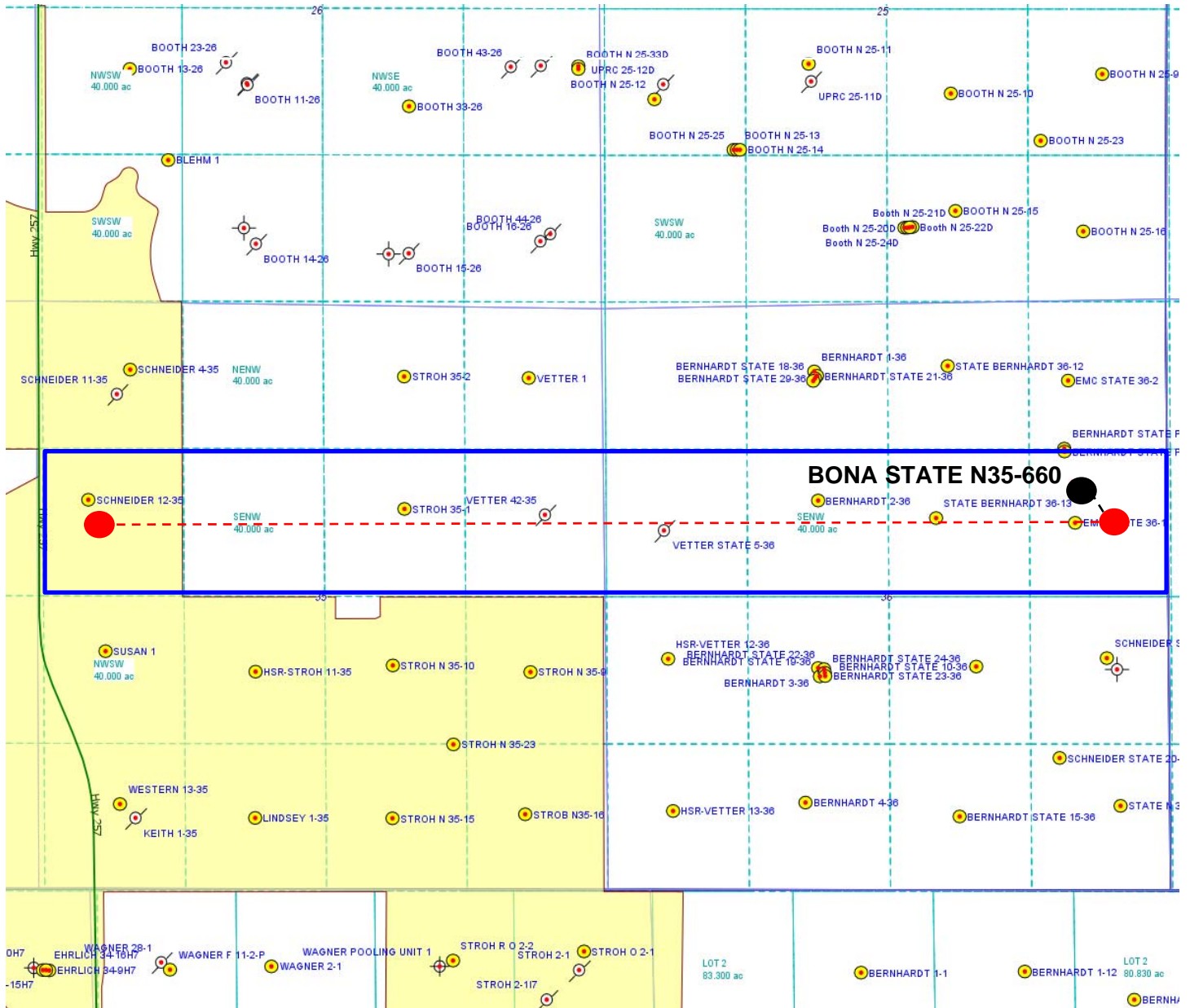


# Bona State N35-660

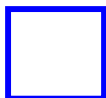
## Proposed Spacing Unit – Noble Energy, Inc

S/2N/2 Section 35, Township 5 North, Range 67 West

S/2N/2 Section 36, Township 5 North, Range 67 West



### Legend



Proposed 320.00± acre spacing unit



Bottom Hole Location