

1625 Broadway
Suite 2000
Denver, CO 80202

Tel: 303.228.4000
Fax: 303.228.4280
www.nobleenergyinc.com



August 1, 2016

Colorado Oil and Gas Conservation Commission
The Chancery Building
1120 Lincoln Street, Suite 801
Denver, CO 80203
Attn: Mr. Matt Lepore, Director

RE: Bona State N35-640, Doc # 401053498
Section 36: NE/4SE/4 Township 5 North, Range 67 West, 6th P.M.
Weld County, Colorado

Dear Director:

Noble Energy, Inc. ("NEI") is planning to drill the captioned boundary well in accordance with the provisions of COGCC Rule 318A.e.

NEI's proposed wellbore spacing unit consists of the Sec 35: N/2S/2, Sec 36: N/2S/2, , T5N, R67W, creating a 320-acre wellbore spacing unit for the Niobrara formation. NEI is not the only owner within the proposed wellbore spacing unit and as such provided notice to the remaining owner(s) within said proposed spacing unit as required under COGCC Rule 318A.e.(5). Copies of the required notice letter(s) is/are on file at the NEI offices. The required thirty (30) day notice period has elapsed absent the receipt by NEI of an objection to said proposal by the owner(s) within the proposed spacing unit for this well.

Enclosed are copies of the following documents to assist you in your review and approval of NEI's proposed APD for the captioned well:

- Map & plat illustrating proposed wellbore spacing unit.

Thank you for your attention to the enclosed. NEI respectfully requests that the COGCC review the enclosed information and approve the Application for Permit to Drill the captioned well.

Sincerely,

Susan Miller

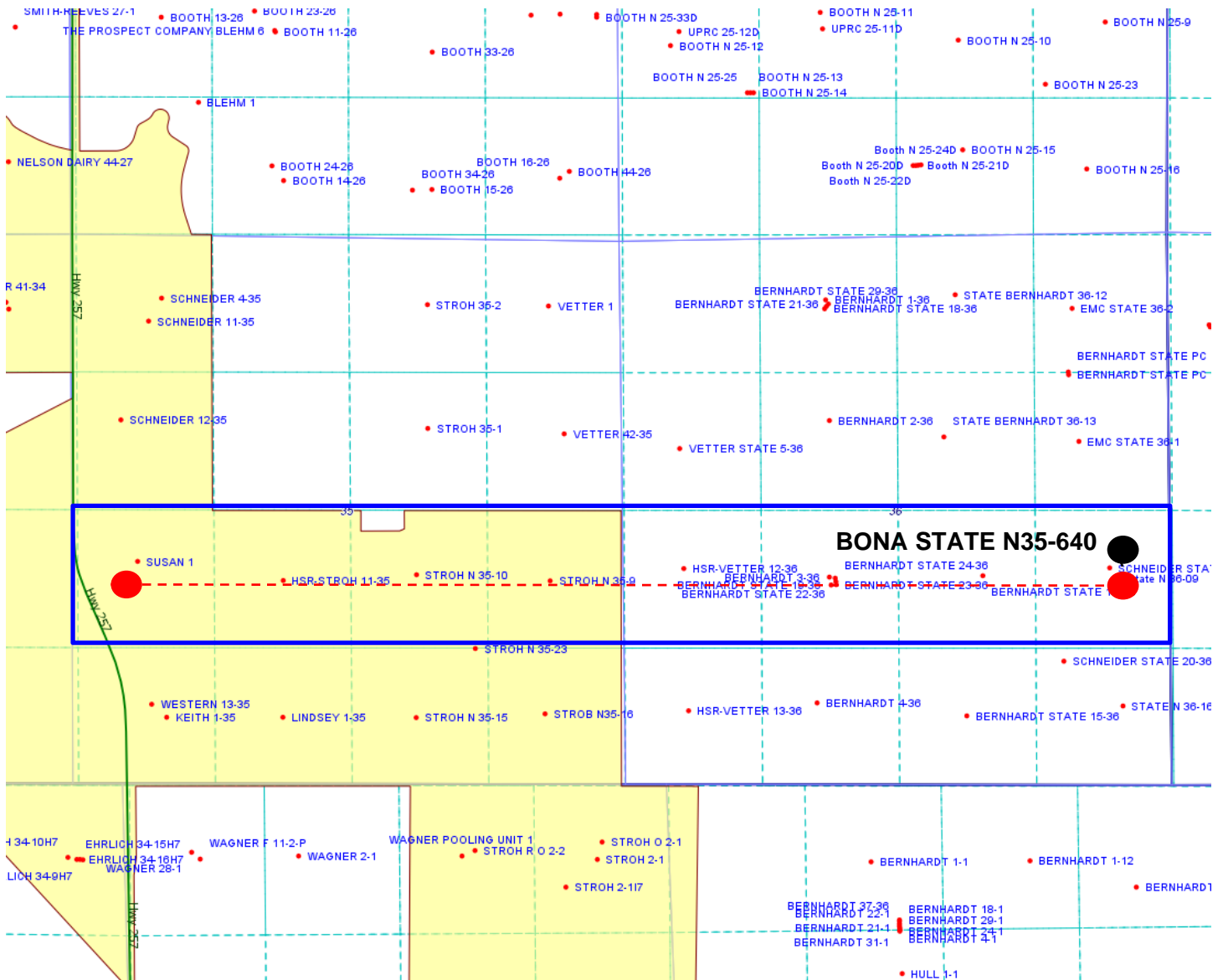
Susan Miller
Regulatory Analyst II
Noble Energy Inc.

Bona State N35-640

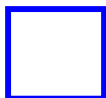
Proposed Spacing Unit – Noble Energy, Inc

N/2S/2 Section 35, Township 5 North, Range 67 West

N/2S/2 Section 36, Township 5 North, Range 67 West



Legend



Proposed 320.00± acre spacing unit



Bottom Hole Location

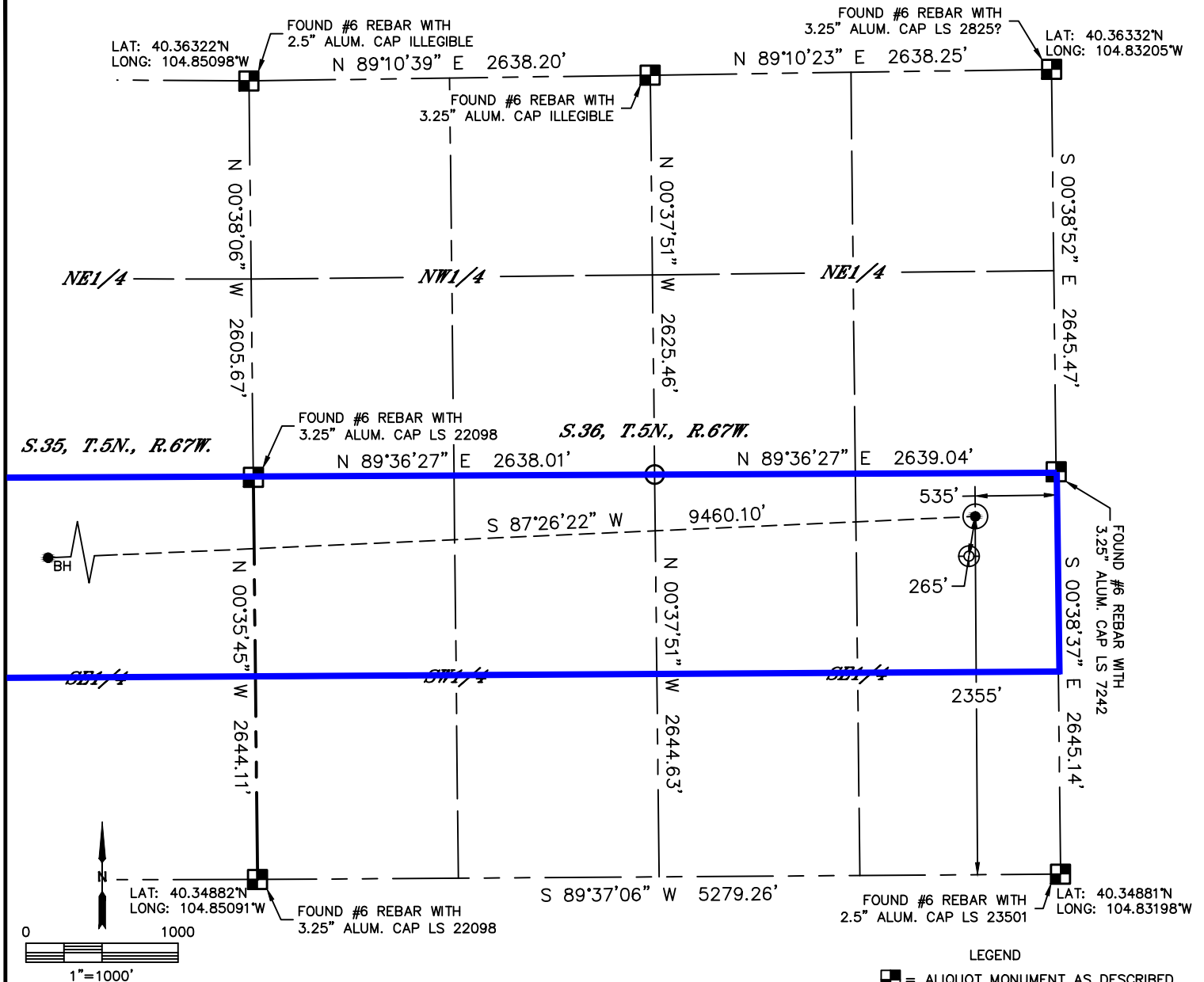


Lat40°, Inc. 6250 W. 10th Street, Unit 2, Greeley, CO 970-515-5294

LATITUDE & LONGITUDE EXHIBIT

BONA STATE N35-640

SECTION: 36
TOWNSHIP: 5N
RANGE: 67W
6TH. P.M.
WELD COUNTY, CO



CLIENT: NOBLE ENERGY				LANDMAN: NICK HAFFNER		
INSTRUMENT OPERATOR: BRIAN ROTTINGHAUS				SURVEY DATE: 3/29/2016		SURFACE USE: PASTURE
SHL FOOTAGE	SHL LAT °	SHL LONG °	SHL PDOP	SHL ELEV (FT.)	SHL 1/4/1/4	SHL S-T-R
2355 FSL 535 FEL	40.35527	-104.83393	1.8	4872	NESE	36-5-67

BHL FOOTAGE	BHL LAT °	BHL LONG °	BHL S-T-R
1980 FSL 535 FWL	40.35430	-104.86784	35-5-67

NEAREST EXISTING WELL IN SHL 1/4/1/4	
EXISTING SCHNEIDER STATE 9-36	±265' SW
NEAREST CULTURAL ITEMS	
BUILDING	±2131' NE
BUILDING UNIT	±2802' NW
HIGH OCCUPANCY BUILDING UNIT	5280'+
DESIGNATED OUTSIDE ACTIVITY AREA	5280'+
PUBLIC ROAD (COUNTY ROAD 25)	±528' E
ABOVE GROUND UTILITY	±508' E
RAILROAD	5280'+
PROPERTY LINE	±535' E

NOTE:

- 1) Bearings shown are Grid Bearings of the Colorado State Plane Coordinate System, North Zone, North American Datum 1983. The lineal dimensions as contained herein are based upon the "U.S. Survey Foot."
- 2) Distances to section lines measured at 90 degrees from said section lines.
- 3) Ground elevations are based on an observed GPS elevation (NAVD 1988 DATUM).
- 4) Latitude and Longitude shown are (NAD 83 DATUM).
- 5) IMPROVEMENTS: See LOCATION DRAWING for all visible improvements within 500' of oil and gas location.
- 6) This map does not represent a boundary survey.

SHEET 1 OF 2

DATE: 4/5/2016
PROJECT#: 2016030

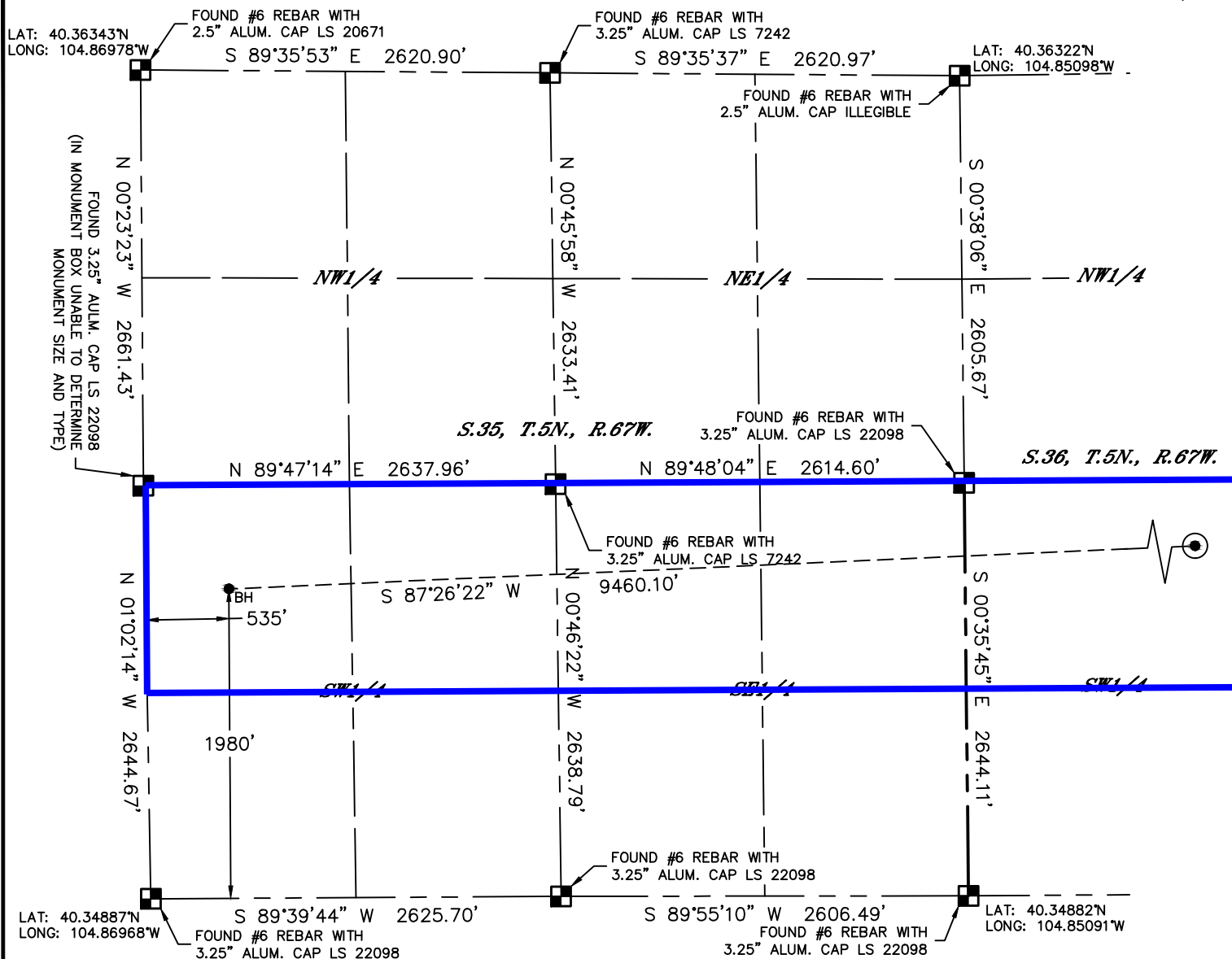


Lat40°, Inc. 6250 W. 10th Street, Unit 2, Greeley, CO 970-515-5294

LATITUDE & LONGITUDE EXHIBIT

BONA N35-640

SECTION: 36
TOWNSHIP: 5N
RANGE: 67W
6TH. P.M.
WELD COUNTY, CO



LEGEND

- = ALIQUOT MONUMENT AS DESCRIBED
- = CALCULATED POSITION
- ⊙ = SURFACE HOLE LOCATION (SHL)
- ▲ = ENTRY POINT LOCATION (EP)
- BH = BOTTOM HOLE LOCATION (BHL)
- ⊕ = EXISTING WELL
- ⊖ = ABANDONED WELL

NOTE:

- 1) Bearings shown are Grid Bearings of the Colorado State Plane Coordinate System, North Zone, North American Datum 1983. The lineal dimensions as contained herein are based upon the "U.S. Survey Foot."
- 2) Distances to section lines measured at 90 degrees from said section lines.
- 3) Ground elevations are based on an observed GPS elevation (NAVD 1988 DATUM).
- 4) Latitude and Longitude shown are (NAD 83 DATUM).
- 5) IMPROVEMENTS: See LOCATION DRAWING for all visible improvements within 500' of oil and gas location.
- 6) This map does not represent a boundary survey.

SHEET 2 OF 2

DATE: 4/5/2016
PROJECT#: 2016030

