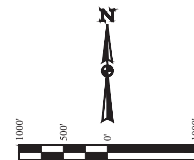


- LEGEND:
- 90° SYMBOL
 - PROPOSED WELLHEAD
 - ENTRY POINT
 - TARGET BOTTOM HOLE
 - SECTION CORNERS LOCATED. (NAD 83)
 - SECTION CORNERS RE-ESTABLISHED. (Not Set on Ground.) (NAD 83)

T1N, R67W, 6th P.M.

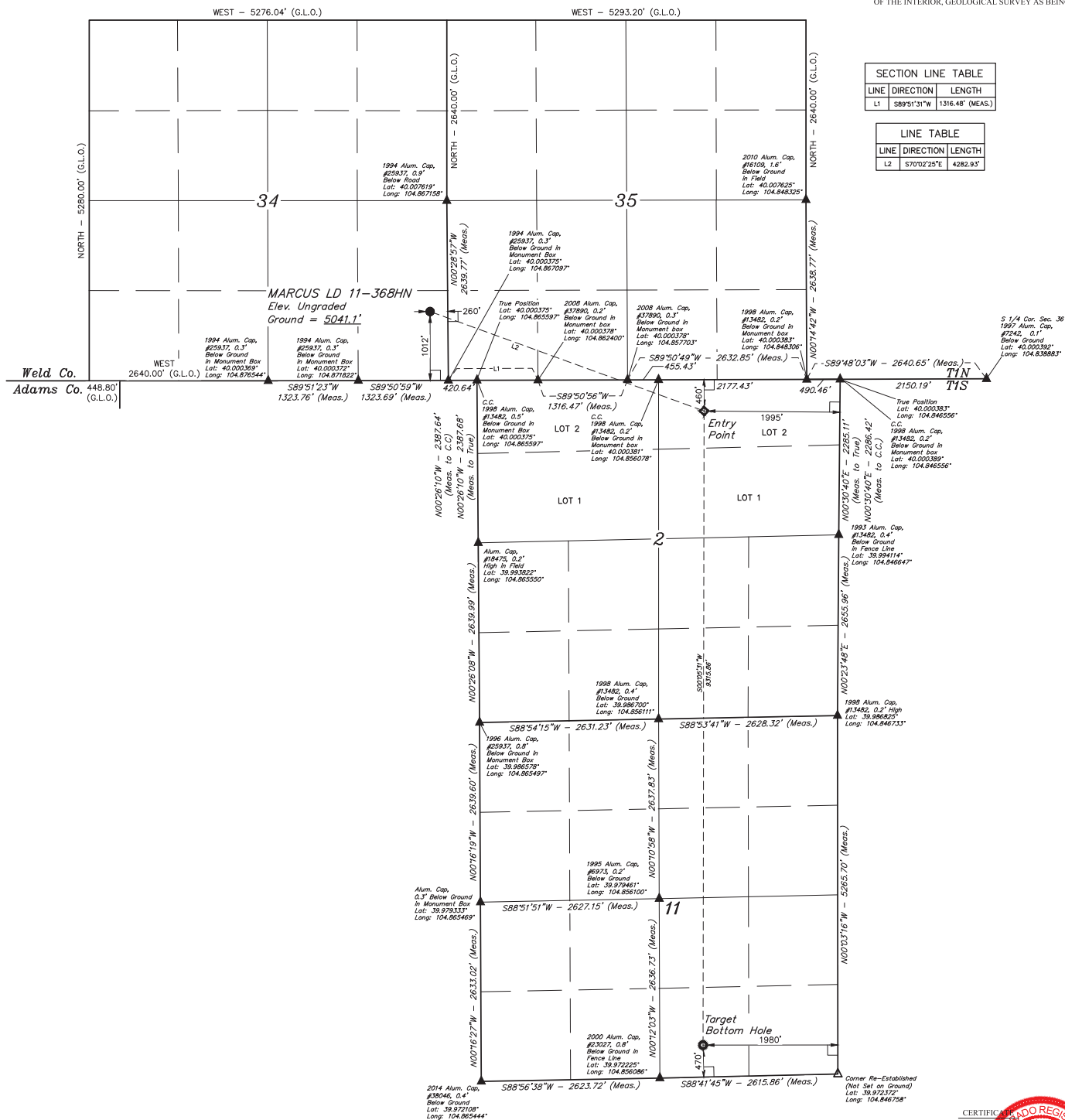


BASIS OF BEARINGS
BASIS OF ELEVATION

BENCHMARK JR 53 5026 LOCATED IN THE SW 1/4 SE 1/4 OF SECTION 18, T1N, R68W, 6th P.M., TAKEN FROM 1988 PUBLISHED DATUM BY THE UNITED STATES DEPARTMENT OF THE INTERIOR, GEOLOGICAL SURVEY AS BEING 5028 FEET.

SECTION LINE TABLE		
LINE	DIRECTION	LENGTH
L1	S89°51'31"W	1316.48' (MEAS.)

LINE TABLE		
LINE	DIRECTION	LENGTH
L2	S70°02'25"E	4282.93'



CERTIFICATE OF REGISTRATION
THIS IS TO CERTIFY THAT THE ABOVE IS A TRUE AND CORRECT COPY OF THE ORIGINAL SURVEY MAP AND NOTES OF ACTUAL SURVEYS MADE BY JARED CHRISTOPHER, J.C. UNDER MY SUPERVISION AND THAT THE SAME ARE TRUE AND CORRECT TO THE BEST OF MY KNOWLEDGE AND BELIEF.
JARED CHRISTOPHER, J.C.
REGISTERED LAND SURVEYOR
RECEIVED NO. 28261
STATE OF COLORADO
JAN 16 2016

REV: 1 04-19-16 C.C. (NAME, EP & BHL CHANGE)

GREAT WESTERN OPERATING COMPANY
MARCUS LD 11-368HN
SE 1/4 SE 1/4, SECTION 34, T1N, R67W, 6th P.M.
WELD COUNTY, COLORADO

UELS, LLC
Corporate Office * 85 South 200 East
Vernal, UT 84078 * (435) 789-1017

UJNTAH
SURVEYED BY: JARED CHRISTOPHER, J.C. DATE: 11-20-14
DRAWN BY: J.W. DATE DRAWN: 12-01-14
SCALE: 1" = 1000'
WELL LOCATION PLAT

NAD 83 (TARGET BOTTOM HOLE)	NAD 83 (ENTRY POINT)	NAD 83 (SURFACE LOCATION)
LATITUDE = 39°58'24.79" (39.973553)	LATITUDE = 39°59'56.83" (39.999119)	LATITUDE = 40°00'11.35" (40.003153)
LONGITUDE = 104°51'13.75" (104.853819)	LONGITUDE = 104°51'13.30" (104.853694)	LONGITUDE = 104°52'04.98" (104.868050)
NAD 27 (TARGET BOTTOM HOLE)	NAD 27 (ENTRY POINT)	NAD 27 (SURFACE LOCATION)
LATITUDE = 39°58'24.84" (39.973567)	LATITUDE = 39°59'56.88" (39.999133)	LATITUDE = 40°00'11.45" (40.003169)
LONGITUDE = 104°51'13.84" (104.853289)	LONGITUDE = 104°51'13.39" (104.853164)	LONGITUDE = 104°52'03.07" (104.867319)