

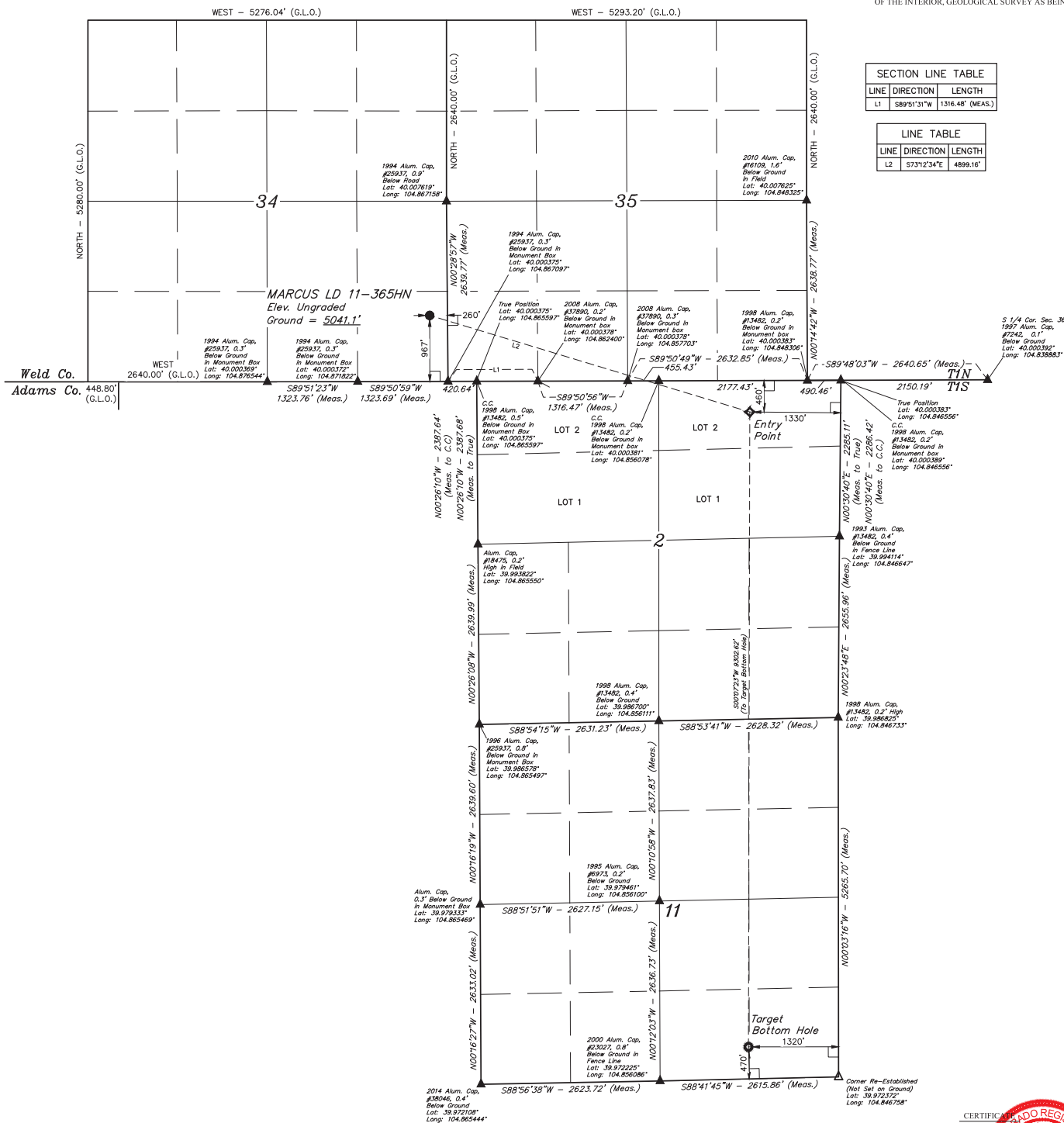
L = 90° SYMBOL.  
 ● = PROPOSED WELLHEAD.  
 ◆ = ENTRY POINT.  
 ○ = TARGET BOTTOM HOLE.  
 ▲ = SECTION CORNERS LOCATED. (NAD 83)  
 △ = SECTION CORNERS RE-ESTABLISHED.  
 (Not Set on Ground.) (NAD 83)

## BASIS OF BEARINGS

BENCHMARK JR 53 5026 LOCATED IN THE SW 1/4 SE 1/4  
OF SECTION 18, T1N, R68W, 6th P.M., TAKEN FROM 1988  
PUBLISHED DATUM BY THE UNITED STATES DEPARTMENT  
OF THE INTERIOR, GEOLOGICAL SURVEY AS BEING 5028 FEET.

SECTION LINE TABLE		
LINE	DIRECTION	LENGTH
L1	S89°51'31"W	1316.48' (MEAS.)

LINE TABLE		
LINE	DIRECTION	LENGTH
L2	S73°12'34"E	4899.16'



**CERTIFICATE**

THIS IS TO CERTIFY THAT THE ABOVE PLAN WAS PREPARED FROM THE  
NOTES OF ACTUAL SURVEYS MADE BY ME UNDER MY SUPERVISION,  
AND THAT THE SAME ARE TRUE AND ACCURATE TO THE BEST OF MY  
KNOWLEDGE AND BELIEF.

CERTIFICATE  
 ABOVE PLAT WAS PREPARED AND  
 MADE BY ME IN ACCORDANCE WITH THE  
 E AND CONFORMS TO THE BEST OF MY  
 KNOWLEDGE  
 28285  
 REGISTERED LAND SURVEYOR  
 REGISTRATION NO. 28285  
 STATE OF COLORADO

REV: 1 04-19-16 C.C. (NAME, EP &amp; BHL CHANGE)

MARCUS LD 11-365HN  
SE 1/4 SE 1/4, SECTION 34, T1N, R67W, 6th P.M.  
WELD COUNTY, COLORADO

 UELLS, LLC  
Corporate Office \* 85 South 200 East  
Vernal, UT 84078 \* (435) 789-1017

ENGINEERING & LAND SURVEYING	
SURVEYED BY: JARED CHRISTOPHER, J.C.	DATE: 11-20-14
DRAWN BY: J.W.	DATE DRAWN: 12-01-14

SCALE: 1" = 1000'

**WELL LOCATION PLAT**

---