

1801 Broadway
Suite 500
Denver, Colorado 80202



Allison Linz
Regulatory Technician
Tel: 303.398.0355
E-mail:
regulatorypermitting@gwogco.com

July 27, 2016

Colorado Oil and Gas Conservation Commission
1120 Lincoln Street, Suite 801
Denver, Colorado 80203

RE: **Proposed Wellbore Spacing Unit**
Marcus LD 11-365HC
Codell New Drill

SESE Section 34
Township 1N, Range 67W, 6th P.M.
Weld County, Colorado

Dear Director:

Great Western Operating Company, LLC is planning to drill the above captioned well in accordance with the provisions of COGCC Rule 318A.e.

Great Western proposed wellbore spacing unit consists of:

- **1S-67W-Sec 11:E2**
- **1S-67W-Sec 2: E2**
- **640 Acres**

The 30 day notification time period has passed and we have not received any objections to such well locations or proposed spacing unit, therefore Great Western hereby requests the Director to approve the above mentioned well. Great Western Operating Company, LLC respectfully requests that the COGCC review the enclosed map illustrating the proposed wellbore spacing unit.

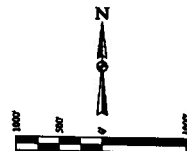
Respectfully,

Allison Linz

Allison Linz
Regulatory Technician
Great Western Operating Company, LLC

LEGEND:

- 90° SYMBOL
- - PROPOSED WELLHEAD.
- ◆ - ENTRY POINT.
- - TARGET BOTTOM HOLE.
- ▲ - SECTION CORNERS LOCATED. (NAD 83)
- △ - SECTION CORNERS RE-ESTABLISHED.
(Not Set on Ground.) (NAD 83)

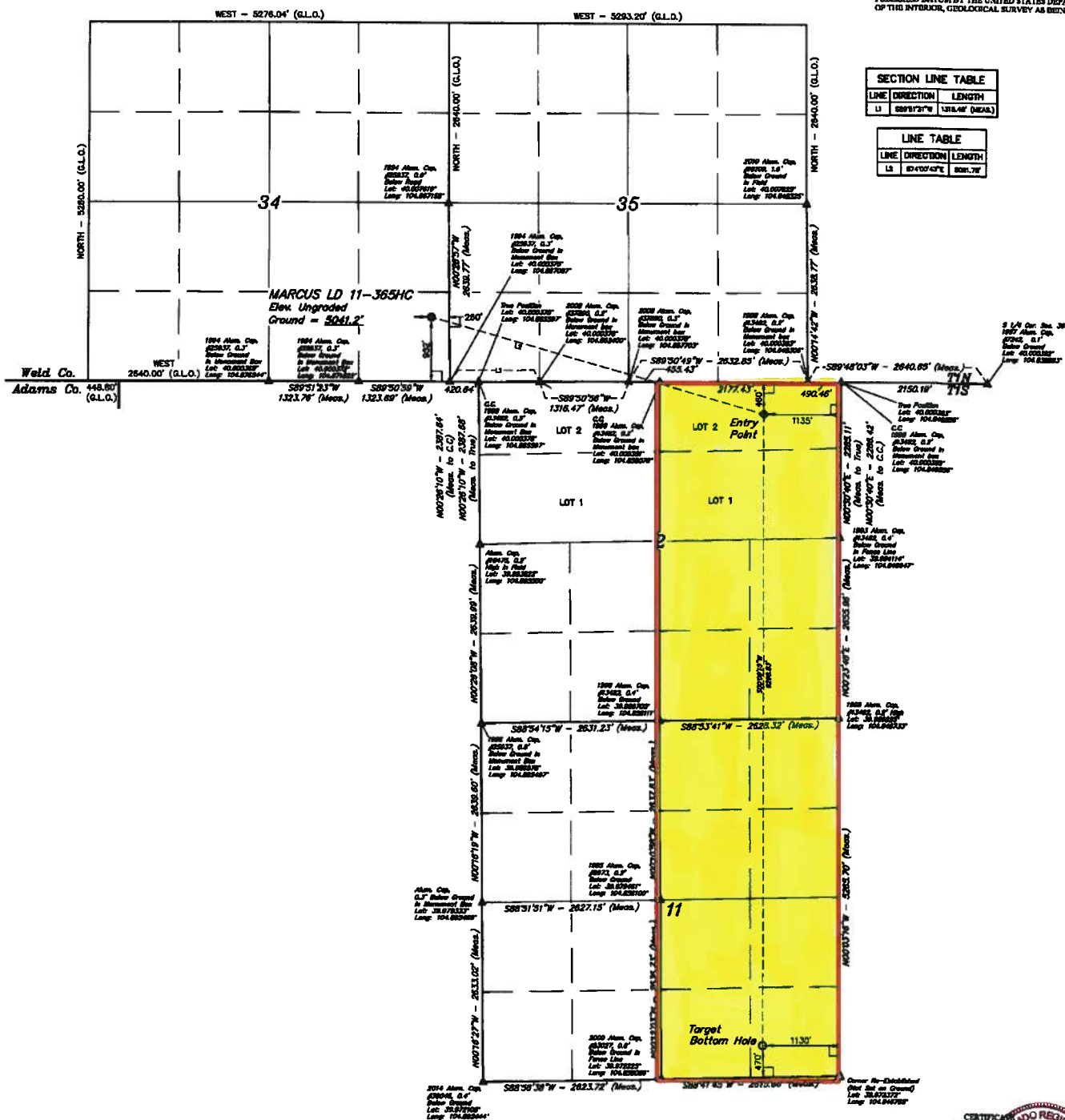


~~BASIS OF BEARINGS~~

BENCHMARK JR 53 5026 LOCATED IN THE SW 1/4 SE 1/4
OF SECTION 18, T.1N, R.6W, 6th P.M., TAKEN FROM 1988
PUBLISHED DATUM BY THE UNITED STATES DEPARTMENT
OF THE INTERIOR, GEOLOGICAL SURVEY AS BEING 5026 FEET

SECTION LINE TABLE		
LINE	DIRECTION	LENGTH
L1	S89°51'21"W	1318.46' (0.48A)

LINE TABLE		
LINE	DIRECTION	LENGTH
13	W 40° 55' E	801.7



THIS IS TO CERTIFY THAT THE ABOVE NAMED PERSON HAS BEEN
NOTED IN ACTUAL PLAYERS MADE BY THE BOARD OF THE
AND THAT THE NAME ARE TRUE AND CORRECT AS SHOWN ON THE
BOOKS AND RECORDS OF THE BOARD.

REV: 1 04-19-16 C.C. (NAME, P.A. & JIL CHAN)

GREAT WESTERN OPERATING COMPANY

MARCUS LD 11-365HC
SE 1/4 SE 1/4, SECTION 34, T1N, R57W, 6th P.M.
WELD COUNTY, COLORADO

FDOP-1



UKLS, LLC
Corporate Office • 85 South 280 East
Vernal, UT 84078 • (435) 786-1017

NAD 27 (YARLEY BUTTON HOLE)	NAD 27 (SPERRY POINT)	NAD 27 (BIRCHMAN LOCATION)
LATITUDE - 39°34'N (04.569000)	LATITUDE - 39°34'N (04.569119)	LATITUDE - 39°34'N (04.569000)
LONGITUDE - 104°15'W (04.569700)	LONGITUDE - 104°15'W (04.569620)	LONGITUDE - 104°15'W (04.569600)
NAD 27 (YARLEY BUTTON HOLE)	NAD 27 (SPERRY POINT)	NAD 27 (BIRCHMAN LOCATION)
LATITUDE - 39°34'N (04.569119)	LATITUDE - 39°34'N (04.569119)	LATITUDE - 40°00'N (04.569000)
LONGITUDE - 104°15'W (04.569000)	LONGITUDE - 104°15'W (04.569000)	LONGITUDE - 104°20'W (04.569000)

DATE: 11-20-14

SCALE: 1" = 1000'

WELL LOCATION PLAN

WELL LOCATION PLANS