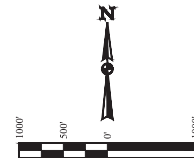


- LEGEND:
- 90° SYMBOL
 - PROPOSED WELLHEAD
 - ENTRY POINT
 - TARGET BOTTOM HOLE
 - SECTION CORNERS LOCATED. (NAD 83)
 - SECTION CORNERS RE-ESTABLISHED. (Not Set on Ground.) (NAD 83)

T1N, R67W, 6th P.M.

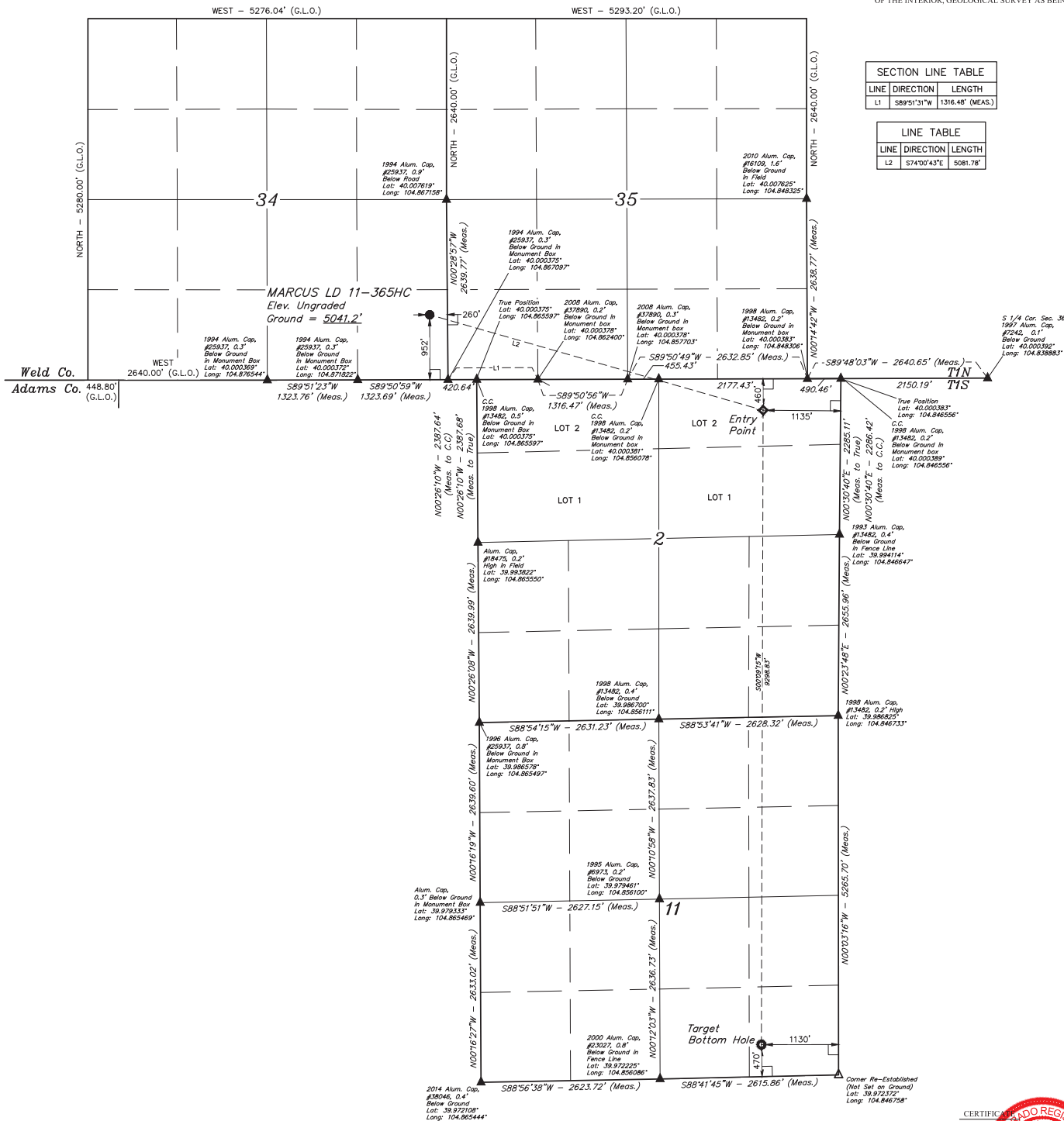


BASIS OF BEARINGS
BASIS OF ELEVATION

BENCHMARK JR 53 5026 LOCATED IN THE SW 1/4 SE 1/4 OF SECTION 18, T1N, R68W, 6th P.M., TAKEN FROM 1988 PUBLISHED DATUM BY THE UNITED STATES DEPARTMENT OF THE INTERIOR, GEOLOGICAL SURVEY AS BEING 5028 FEET.

SECTION LINE TABLE		
LINE	DIRECTION	LENGTH
L1	S89°51'31"W	1316.48' (MEAS.)

LINE TABLE		
LINE	DIRECTION	LENGTH
L2	S74°00'43"E	5081.78'



CERTIFICATION
THIS IS TO CERTIFY THAT THE ABOVE IS A TRUE AND CORRECT COPY OF THE ORIGINAL SURVEY MAP AND THAT THE SAME ARE TRUE AND CORRECT TO THE BEST OF MY KNOWLEDGE AND BELIEF.
JARED CHRISTOPHER, J.C.
REGISTERED LAND SURVEYOR
RECEIVED NO. 28261
STATE OF COLORADO
JAN 16 2016

REV: 1 04-19-16 C.C. (NAME, EP & BHL CHANGE)
GREAT WESTERN OPERATING COMPANY
MARCUS LD 11-365HC
SE 1/4 SE 1/4, SECTION 34, T1N, R67W, 6th P.M.
WELD COUNTY, COLORADO

UELS, LLC
Corporate Office * 85 South 200 East
Vernal, UT 84078 * (435) 789-1017

PDOP = 1.3

SAD 83 (TARGET BOTTOM HOLE)	SAD 83 (ENTRY POINT)	SAD 83 (SURFACE LOCATION)
LATITUDE = 39°58'24.96" (39.973600)	LATITUDE = 39°59'56.83" (39.999119)	LATITUDE = 40°00'10.76" (40.002989)
LONGITUDE = 104°51'02.83" (104.850760)	LONGITUDE = 104°51'02.25" (104.850625)	LONGITUDE = 104°52'04.97" (104.868047)
SAD 27 (TARGET BOTTOM HOLE)	SAD 27 (ENTRY POINT)	SAD 27 (SURFACE LOCATION)
LATITUDE = 39°58'25.16" (39.973617)	LATITUDE = 39°59'56.80" (39.999136)	LATITUDE = 40°00'10.82" (40.003006)
LONGITUDE = 104°51'00.92" (104.850256)	LONGITUDE = 104°51'00.34" (104.850094)	LONGITUDE = 104°52'03.06" (104.867317)

WELL LOCATION PLAT