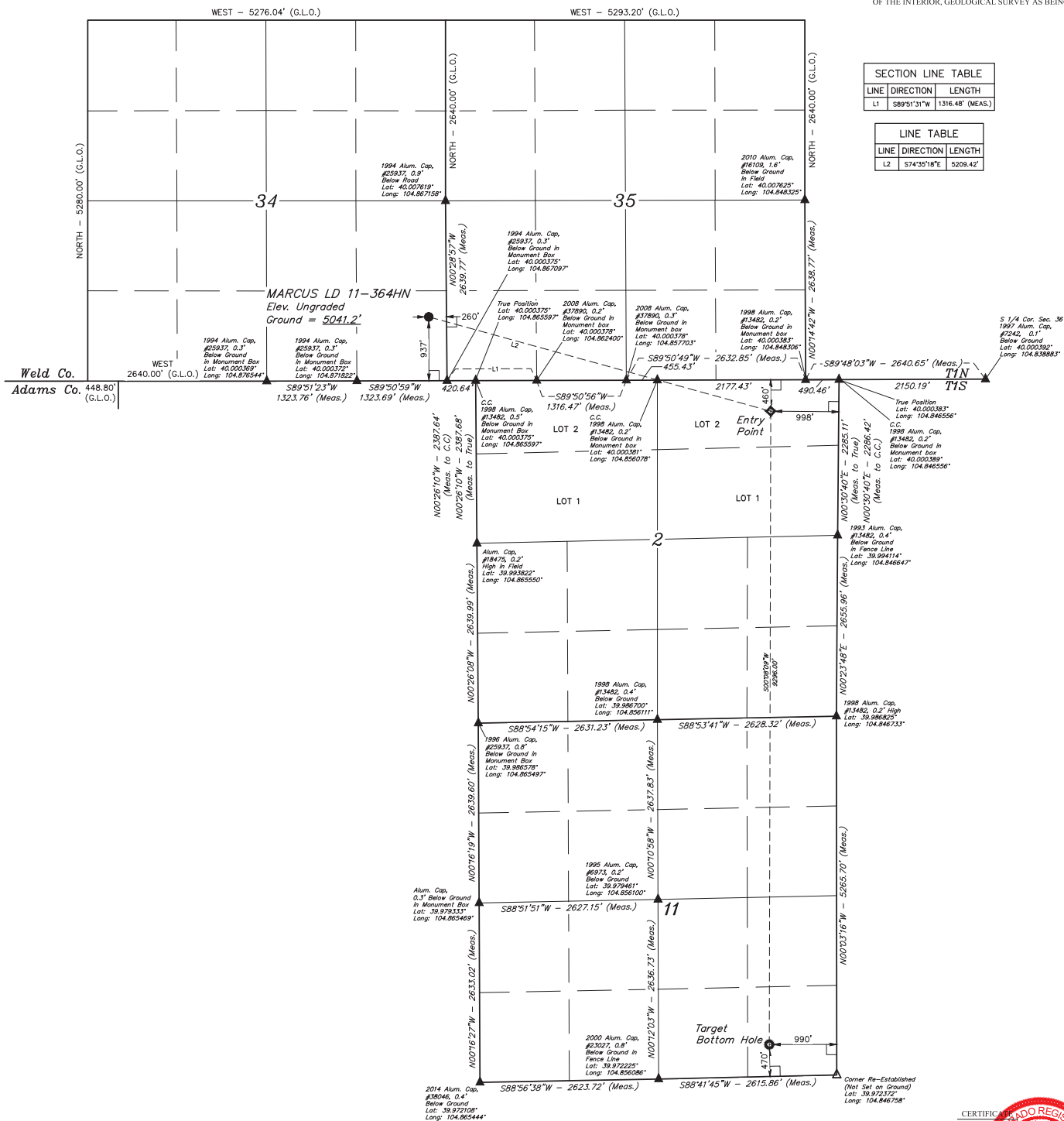


T1N, R67W, 6th P.M.

-

BENCHMARK JR 53 5026 LOCATED IN THE SW 1/4 SE 1/4 OF SECTION 18, T1N, R68W, 6th P.M., TAKEN FROM 1988 PUBLISHED DATUM BY THE UNITED STATES DEPARTMENT OF THE INTERIOR, GEOLOGICAL SURVEY AS BEING 5028 FEET.

LINE TABLE		
LINE	DIRECTION	LENGTH
L2	S74°35'18"E	5209.42'



CERTIFICATE

THIS IS TO CERTIFY THAT THE ABOVE MAP WAS PREPARED BY ME FROM THE NOTES OF ACTUAL SURVEYS MADE BY ME AND UNDER MY SUPERVISION AND THAT THE SAME ARE TRUE AND ACCURATE TO THE BEST OF MY KNOWLEDGE AND BELIEF.

CERTIFICATE
 I, ABOVE SIGNED, HAVE PREPARED AND MADE MY MAP UNDER MY SUPERIOR KNOWLEDGE AND CONSCIENCE TO THE BEST OF MY ABILITY.

John A. Smith
 28285

REGISTERED LAND SURVEYOR
 REGISTRATION NO. 28285
 STATE OF COLORADO

REV: 3 04-19-16 C.C. (NAME, EP & BHL CHANGE)

GREAT WESTERN OPERATING COMPANY

MARCUS LD 11-364HN
SE 1/4 SE 1/4, SECTION 34, T1N, R67W, 6th P.M.
WELD COUNTY, COLORADO

U.S. UTAH **UELS, LLC**
Corporate Office * 85 South 200 East
Vernal, UT 84078 * (435) 789-1017

PDOP = 1.3

NAD 83 (TARGET BOTTOM HOLE)	NAD 83 (ENTRY POINT)	NAD 83 (SURFACE LOCATION)
LATITUDE = 39°38'24.99" (39.637608)	LATITUDE = 39°59'56.83" (39.999119)	LATITUDE = 40°09'10.61" (40.002947)
LONGITUDE = 104°54'59.01" (104.850286)	LONGITUDE = 104°51'00.49" (104.850136)	LONGITUDE = 104°52'04.97" (104.868807)
NAD 27 (TARGET BOTTOM HOLE)	NAD 27 (ENTRY POINT)	NAD 27 (SURFACE LOCATION)
LATITUDE = 39°38'25.04" (39.637622)	LATITUDE = 39°59'56.89" (39.999136)	LATITUDE = 40°09'10.67" (40.002964)
LONGITUDE = 104°50'59.13" (104.849758)	LONGITUDE = 104°50'58.58" (104.849606)	LONGITUDE = 104°52'03.06" (104.867517)

SURVEYED BY: JARED CHRISTOPHER, J.C.	DATE: 11-20-14
DRAWN BY: J.W.	DATE DRAWN: 12-01-14

WELL LOCATION PLAT