

1801 Broadway  
Suite 500  
Denver, Colorado 80202



Allison Linz  
Regulatory Technician  
Tel: 303.398.0355  
E-mail:  
regulatorypermitting@gwogco.com

July 27, 2016

Colorado Oil and Gas Conservation Commission  
1120 Lincoln Street, Suite 801  
Denver, Colorado 80203

RE: **Proposed Wellbore Spacing Unit**  
Marcus LD 11-364HN  
Niobrara New Drill

SESE Section 34  
Township 1N, Range 67W, 6th P.M.  
Weld County, Colorado

Dear Director:

Great Western Operating Company, LLC is planning to drill the above captioned well in accordance with the provisions of COGCC Rule 318A.e.

Great Western proposed wellbore spacing unit consists of:

- **1S-67W-Sec 11:E2**
- **1S-67W-Sec 2: E2**
- **640 Acres**

The 30 day notification time period has passed and we have not received any objections to such well locations or proposed spacing unit, therefore Great Western hereby requests the Director to approve the above mentioned well. Great Western Operating Company, LLC respectfully requests that the COGCC review the enclosed map illustrating the proposed wellbore spacing unit.

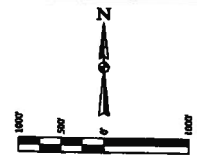
Respectfully,

*Allison Linz*

Allison Linz  
Regulatory Technician  
Great Western Operating Company, LLC

T1N, R67W, 6th P.M.

- LEGEND:**
- BY SYMBOL
  - PROPOSED WELLHEAD
  - ENTRY POINT
  - TARGET BOTTOM HOLE
  - ▲ SECTION CORNERS LOCATED (AND SET)
  - △ SECTION CORNERS RE-ESTABLISHED (Not Set on Ground) (AND SET)

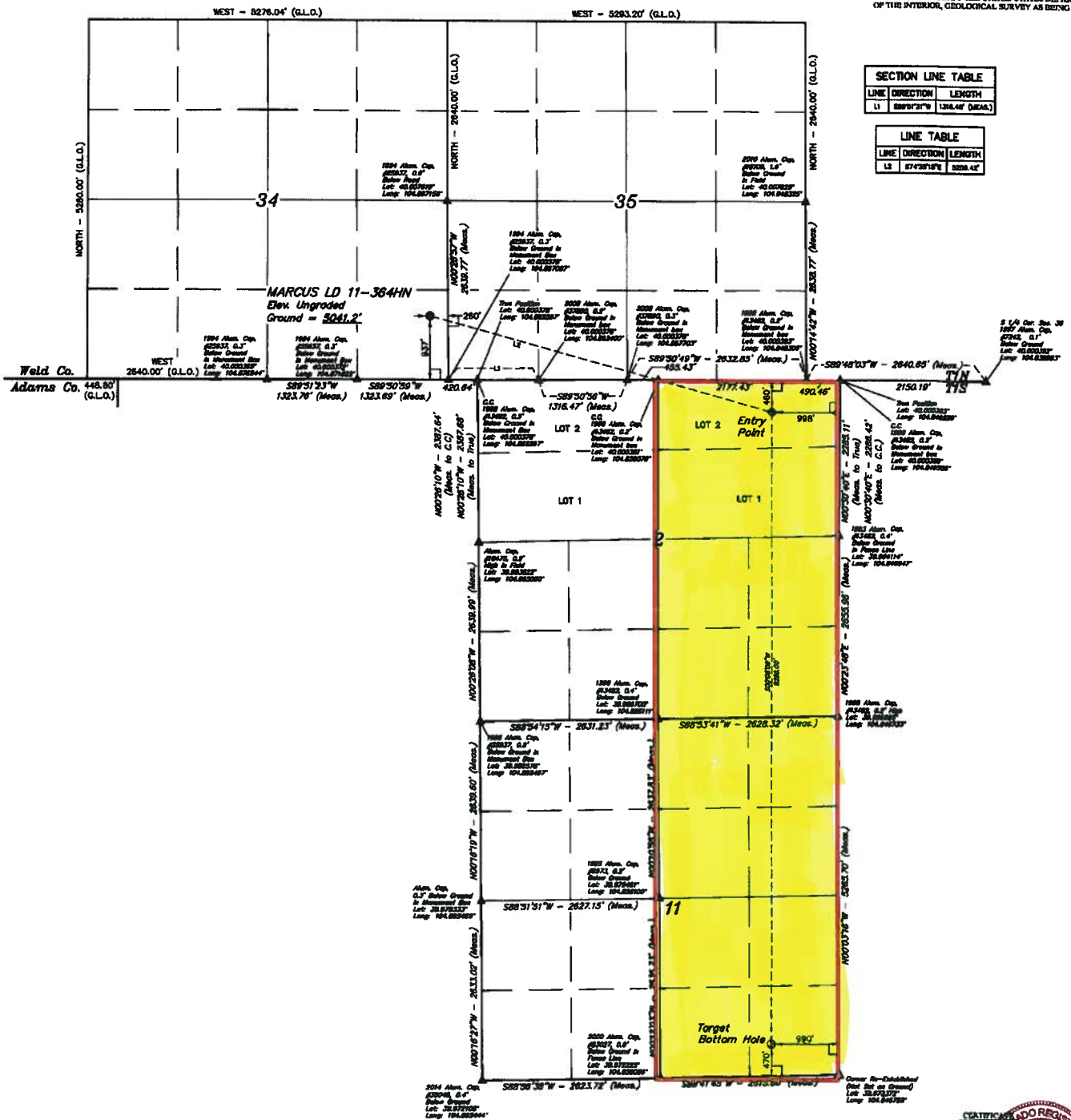


**BASE OF BEARINGS**  
BASED ON MEASUREMENT OF A CUP & OBSERVATION

**BASE OF ELEVATION**  
BENCHMARK R.S. 53228 LOCATED IN THE SW 1/4 SE 1/4 OF SECTION 18, T1N, R67W, 6th P.M., TAKEN FROM 1988 PUBLISHED DATUM BY THE UNITED STATES DEPARTMENT OF THE INTERIOR, GEOLOGICAL SURVEY AS BEING 5228 FEET.

SECTION LINE TABLE		
LINE	DIRECTION	LENGTH
L1	S89°12'37" W	1384.42' (MEAS.)

LINE TABLE		
LINE	DIRECTION	LENGTH
L2	S74°25'10" E	5026.42'



**NOTICE TO CONTRACTORS:**  
THIS IS TO CERTIFY THAT THE ABOVE NOTED BY ACTUAL SURVEY MADE BY ME AND THAT I HAVE BEEN FULLY ADVISED OF THE SAME AND I HAVE KNOWLEDGE AND BELIEF.

**REGISTERED PROFESSIONAL SURVEYOR**  
JAMES CHRISTOPHER, J.C.  
No. 140, 2003  
BY: [Signature]  
JAMES CHRISTOPHER, J.C.  
14000 N. 14th ST., SUITE 100  
DENVER, CO 80227

REV: 3 04-19-16 C.C. (NAME, BP & BIL. CHANGE)  
**GREAT WESTERN OPERATING COMPANY**

MARCUS LD 11-364HN  
SE 1/4 SE 1/4, SECTION 34, T1N, R67W, 6th P.M.  
WELD COUNTY, COLORADO

**UPLA, LLC**  
Corporate Office • 20 South 100 East  
Vernal, UT 84078 • (435) 789-1817

**WELL LOCATION PLAN**

LINE	DIRECTION	LENGTH	LINE	DIRECTION	LENGTH	LINE	DIRECTION	LENGTH	LINE	DIRECTION	LENGTH
L1	S89°12'37" W	1384.42'	L2	S74°25'10" E	5026.42'	L3	S89°12'37" W	1384.42'	L4	S74°25'10" E	5026.42'
L5	S89°12'37" W	1384.42'	L6	S74°25'10" E	5026.42'	L7	S89°12'37" W	1384.42'	L8	S74°25'10" E	5026.42'
L9	S89°12'37" W	1384.42'	L10	S74°25'10" E	5026.42'	L11	S89°12'37" W	1384.42'	L12	S74°25'10" E	5026.42'