

1801 Broadway
Suite 500
Denver, Colorado 80202



Allison Linz
Regulatory Technician
Tel: 303.398.0355
E-mail:
regulatorypermitting@gwogco.com

July 27, 2016

Colorado Oil and Gas Conservation Commission
1120 Lincoln Street, Suite 801
Denver, Colorado 80203

RE: **Proposed Wellbore Spacing Unit**
Marcus LD 11-363HN
Niobrara New Drill

SESE Section 34
Township 1N, Range 67W, 6th P.M.
Weld County, Colorado

Dear Director:

Great Western Operating Company, LLC is planning to drill the above captioned well in accordance with the provisions of COGCC Rule 318A.e.

Great Western proposed wellbore spacing unit consists of:

- **1S-67W-Sec 11:E2**
- **1S-67W-Sec 2: E2**
- **640 Acres**

The 30 day notification time period has passed and we have not received any objections to such well locations or proposed spacing unit, therefore Great Western hereby requests the Director to approve the above mentioned well. Great Western Operating Company, LLC respectfully requests that the COGCC review the enclosed map illustrating the proposed wellbore spacing unit.

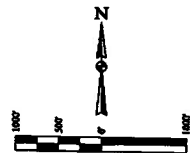
Respectfully,

Allison Linz

Allison Linz
Regulatory Technician
Great Western Operating Company, LLC

LEGEND:

- 90° SYMBOL.
- = PROPOSED WELL HEAD.
- ◆ = ENTRY POINT.
- = TARGET BOTTOM HOLE.
- ▲ = SECTION CORNERS LOCATED. (MAD 83)
- △ = SECTION CORNERS RE-ESTABLISHED.
(Not Set on Ground.) (MAD 83)

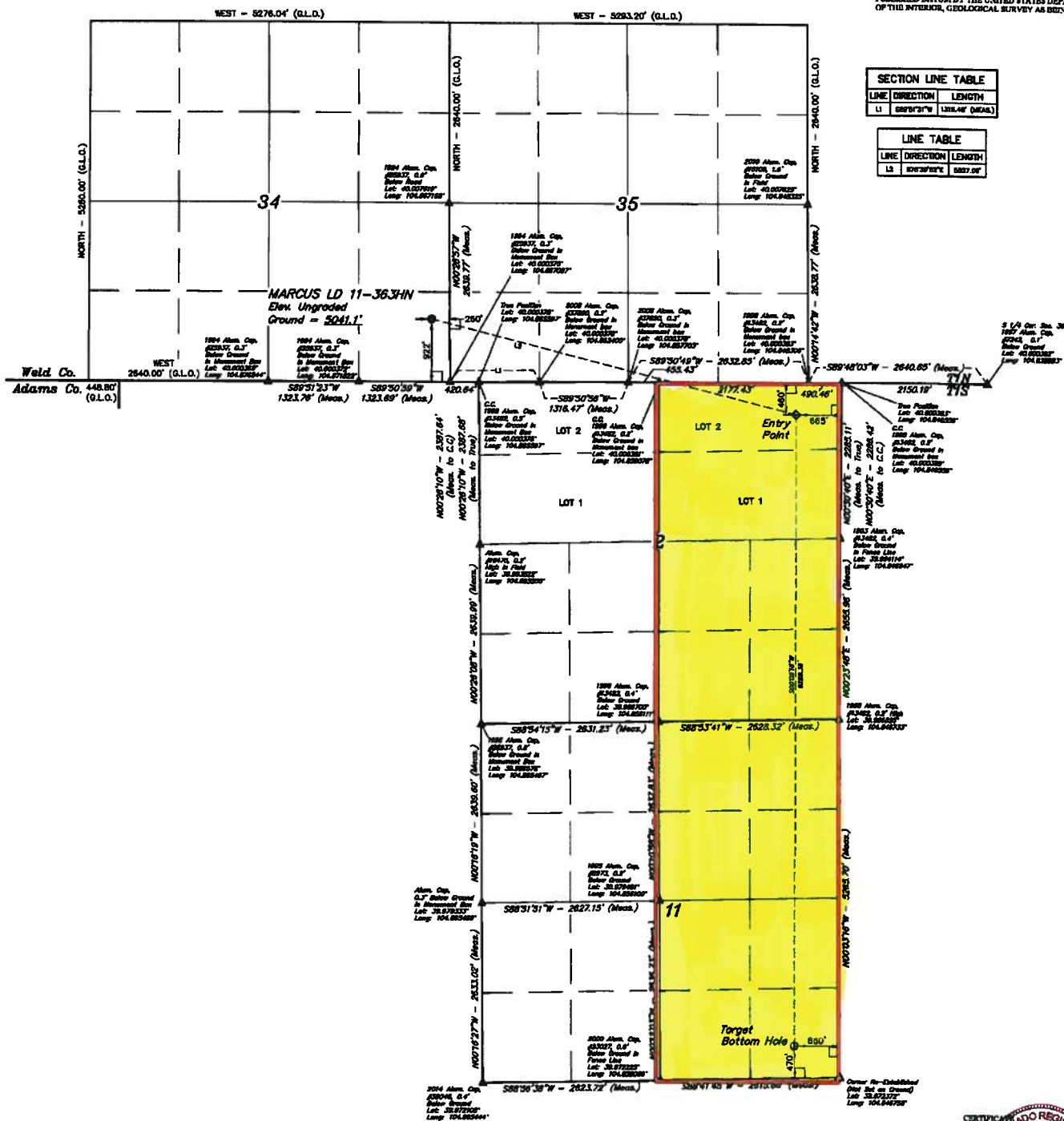


BASIS OF BEARINGS
BASIS OF BEARINGS IS A U.P. & OBSERVATION

BASE OF ELEVATION
BENCHMARK JR. S3 5026 LOCATED IN THE SW 1/4 SE 1/4
OF SECTION 12, T1N, R26W, 6th P.M., TAKEN FROM 1988
PUBLISHED DATUM BY THE UNITED STATES DEPARTMENT
OF THE INTERIOR, GEOLOGICAL SURVEY AS BEING 5026 FEET

SECTION LINE TABLE		
LINE	DIRECTION	LENGTH
L1	S89°51'31"W	1,315.44' (262.8)

LINE TABLE		
LINE	DIRECTION	LENGTH
12	100°30'00"E	500.00



THIS IS TO CERTIFY THAT THE ABOVE-
SIGNED IS AN ACTUAL SURVEYOR'S MAJOR
AND THAT THE NAME AND TITLE ARE TRUE TO THE BEST OF HIS
KNOWLEDGE AND BELIEF.

RECEIVED BY LAND SURVEYOR
HONORARY COMMISSIONER
STANDARD SURVEYING

REV:3 04-19-16 C.C. (NAME, IP & BILL CHANGE)

GREAT WESTERN OPERATING COMPANY

MARCUS LD 11-363HN
SE 1/4 SE 14, SECTION 34, T1N, R67W, 6th P.M.
WELD COUNTY, COLORADO

PDOP = 1.3

URLS, LLC
Corporate Office • 25 South 200 East
Vernal, UT 84078 • (435) 799-1917

NAB 17 (BARTON POINT LIGHT)	NAB 18 (BARTON POINT)	NAB 19 (BARTON POINT)
LATITUDE - 39°37'N (014008)	LATITUDE - 39°36'43" (01400119)	LATITUDE - 39°36'42" (01400098)
LONGITUDE - 106°57'41" (01400111)	LONGITUDE - 106°57'42" (01400097)	LONGITUDE - 106°57'41" (01400096)
NAB 20 (YARLEY BAY LIGHT)	NAB 21 (BARTON POINT)	NAB 22 (BARTON POINT)
LATITUDE - 39°37'31" (01400092)	LATITUDE - 39°36'49" (01400091)	LATITUDE - 39°36'48" (01400090)
LONGITUDE - 106°57'41" (01400091)	LONGITUDE - 106°57'41" (01400089)	LONGITUDE - 106°57'40" (01400088)

WHEEL LOCATION PLANS