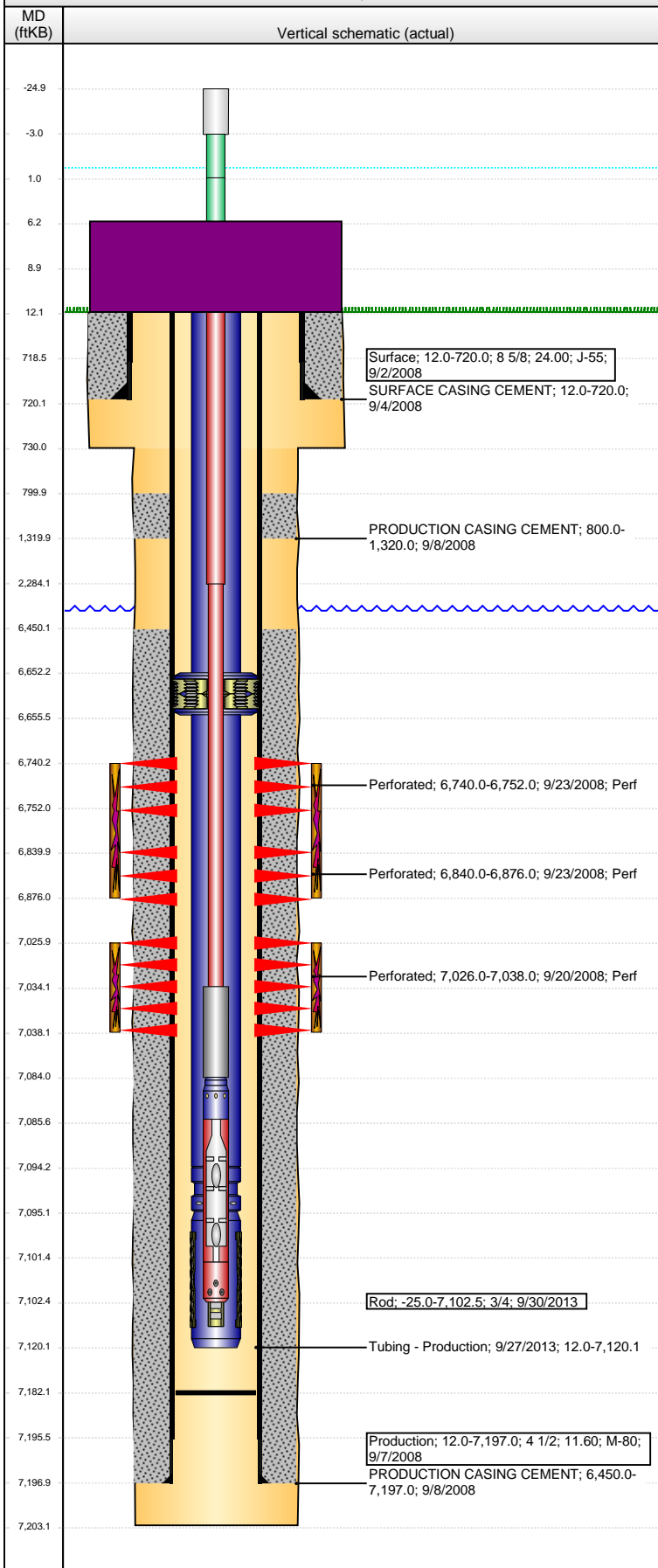


**Well Name: SHABLE 14-11**

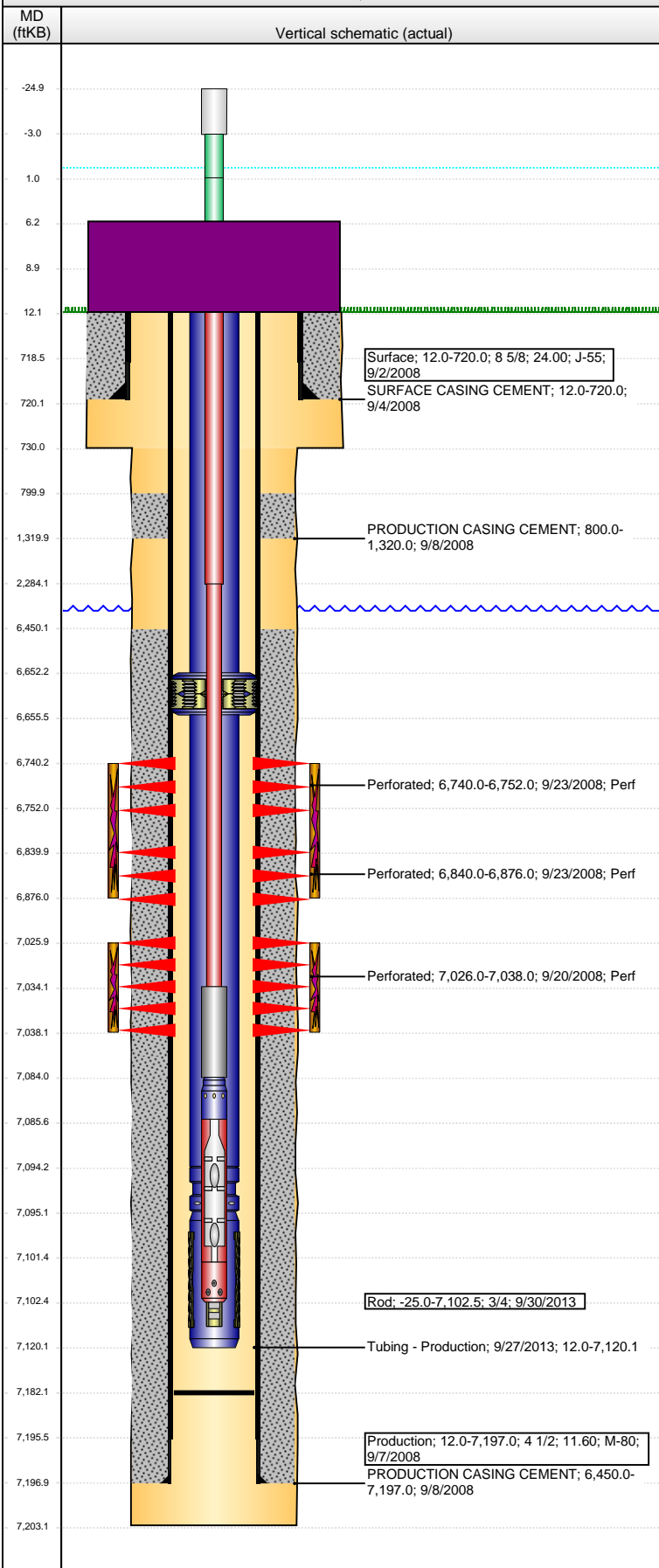
VERTICAL - ORIGINAL HOLE, 8/17/2016 4:27:45 PM



Well Header			
API	Business Unit	District	Well Config
05-123-25174	DJ BASIN	15	VERTICAL
Original KB Elevation (ft)	KB - GL / MSL (ftKB)	Spud Date	P & A Date
4,838	12.00	9/2/2008	
Comment			
CEMENT BASKETS @5176',5090'&4620'			
Directions To Well			
RD 80 & 55, N 2, E 2, S 2, W INTO.			
Congressional Location			
Quarter 3	Quarter 4	Section	Township
NE	NE	14	7 N
Twonshp N/S Dir		Range	Range E/W Dir
N		64	W
Bottom Hole Location			
North-South Distance (ft)	From N or S Line	East-West Distance (ft)	From E or W Line
Plug Back Total Depths			
Date	Depth (ftKB)	Method	Com
9/7/2008	7,182.0	TAG	
Wellbore Sections			
Section Des	Size (in)	Act Top, MD (ftKB)	Act Btm, MD (ftKB)
SURFACE	12 1/4	12	730
PRODUCTION	7 7/8	730	7,203
Zone Statuses			
Zone Name	Status Date	Status	Fluid Type
CODELL	10/14/2008	PR	
NIOBRARA	10/14/2008	PR	
Casing Strings			
Surface, 720.0ftKB			
Casing Description	Run Date	OD (in)	Wt/Len (L...)
Surface	9/2/2008	8 5/8	24.00
Grade		Top, MD (ft...)	MD (ftKB)
J-55		12.0	720.0
Production, 7,197.0ftKB			
Casing Description	Run Date	OD (in)	Wt/Len (L...)
Production	9/7/2008	4 1/2	11.60
Grade		Top, MD (ft...)	MD (ftKB)
M-80		12.0	7,197.0
Cement			
Description	Top Depth (ftKB)	Bottom Depth (ftKB)	
SURFACE CASING CEMENT	12.0	720.0	
PRODUCTION CASING CEMENT	800.0	1,320.0	
PRODUCTION CASING CEMENT	6,450.0	7,197.0	
Tubing Strings			
Tubing Description	Run Date	String...	ID (in)
Tubing - Production	11/12/2009	2 3/8	
Wt (lb/ft)		Grade	Len (ft)
		J-55	7,100.00
Tubing Description	Run Date	String...	ID (in)
Tubing - Production	6/3/2011	2 3/8	1.995
Wt (lb/ft)		Grade	Len (ft)
		J-55	7,108.12
Tubing Description	Run Date	String...	ID (in)
Tubing - Production	9/27/2013	2 3/8	1.995
Wt (lb/ft)		Grade	Len (ft)
		J-55	7,108.12
Tubing Components			
Item Des	OD (in)	Wt (lb/ft)	Grade
Tubing	2 3/8	4.70	J-55
Anchor/catcher	3.99	4.70	J-55
Tubing	2 3/8	4.70	J-55
Pump Seating Nipple	2 3/8	4.70	N-80
Mud Anchor	2 3/8	4.70	J-55
Jts		Len (ft)	Btm (ftKB)
214		6,640.27	6,652.3
1		3.10	6,655.4
14		438.65	7,094.0
1		1.10	7,095.1
1		25.00	7,120.1
Rods & Pumps			
Rod Description	Run Date	Set Depth (ftKB)	
Rod	9/30/2013	7,102.5	
Comment			
Item Description	OD Nominal (in)	Joints	Length (ft)
Polished Rod	1 1/4	1	22.00
Pony Rod	7/8	1	4.00
Pony Rod	7/8	1	8.00
Sucker Rod	7/8	91	2,275.00

**Well Name: SHABLE 14-11**

VERTICAL - ORIGINAL HOLE, 8/17/2016 4:27:48 PM



Item Description	OD Nominal (in)	Joints	Length (ft)
Sucker Rod	3/4	190	4,750.00
Item Description	OD Nominal (in)	Joints	Length (ft)
Sinker Bar	1 1/4	2	50.00
Item Description	OD Nominal (in)	Joints	Length (ft)
Shear Coupling	1 1/4	1	1.50
Item Description	OD Nominal (in)	Joints	Length (ft)
Rod Insert Pump	1 1/4	1	16.00
API Pump Type	Barrel Length (ft)	Seating Assembly Type	
R	16.00	C	
Item Description	OD Nominal (in)	Joints	Length (ft)
Strainer	1 1/4	1	1.00

Perforation Data					
Zone	Bnch/St g	Entered Shot Total	Top (ftKB)	Btm (ftKB)	Date
NIOBRARA, ORIGINAL HOLE	A		6,740.00	6,752.00	9/23/2008
NIOBRARA, ORIGINAL HOLE	B		6,840.00	6,876.00	9/23/2008
CODELL, ORIGINAL HOLE		48	7,026.00	7,038.00	9/20/2008

Stimulations & Treatments		
Date	Zone	Primary Job Type
9/23/2008	CODELL, ORIGINAL HOLE	DRILLING/COMPLETION - ORIGINAL
Technical Result		Tech Result Details
Technical Result		Tech Result Note
Comment		

Date	Zone	Primary Job Type
9/23/2008	NIOBRARA, ORIGINAL HOLE	DRILLING/COMPLETION - ORIGINAL
Technical Result		Tech Result Details
Technical Result		Tech Result Note
Comment		

Other In Hole				
Run Date	Des	OD (in)	Top (ftKB)	Btm (ftKB)

Logs			
Date	Type	Top, MD (ftKB)	Btm, MD (ftKB)
9/7/2008	COMPENSATED DENSITY	3,620.0	7,180.0
9/7/2008	INDUCTION	720.0	7,200.0
9/16/2008	CBL/CCL/GR	600.0	7,140.0
6/26/2013	GYRO	12.0	7,100.0