



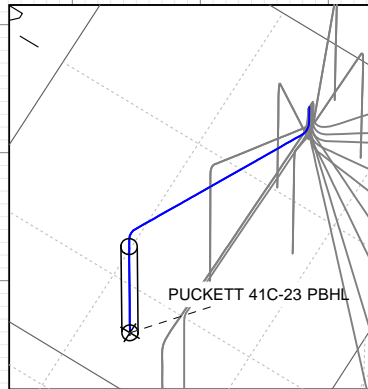
SECTION DETAILS

Sec	MD	Inc	Azi	TVD	+N/-S	+E/-W	Dleg	TFace	Vsect	Target
1	0.00	0.00	0.00	0.00	0.00	0.00	0.00	0.00	0.00	
2	300.00	0.00	0.00	300.00	0.00	0.00	0.00	0.00	0.00	
3	746.50	13.39	103.58	742.44	-12.20	50.50	3.00	103.58	51.95	
4	6829.08	13.39	103.58	6659.56	-343.09	1420.20	0.00	0.00	1461.06	
5	7275.58	0.00	0.00	7102.00	-355.29	1470.70	3.00	180.00	1513.01	
6	9443.58	0.00	0.00	9270.00	-355.29	1470.70	0.00	0.00	1513.01	PUCKETT 41C-23 PBHL

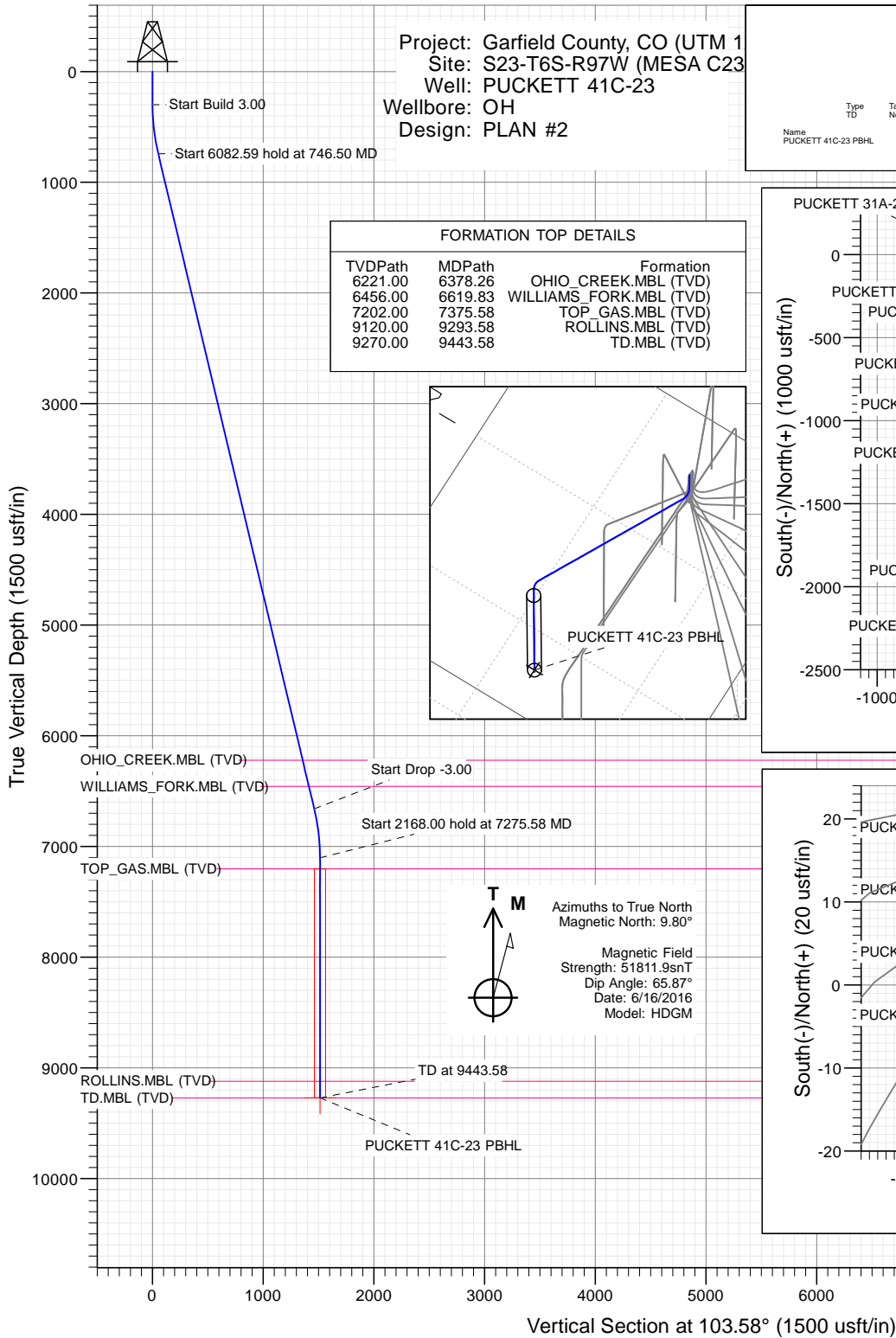
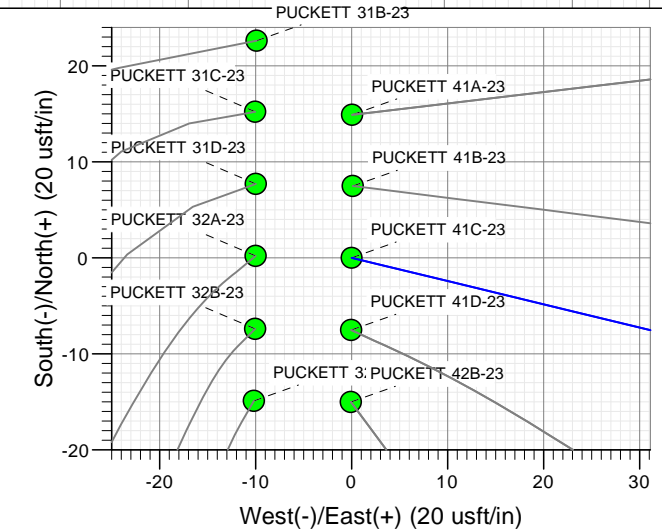
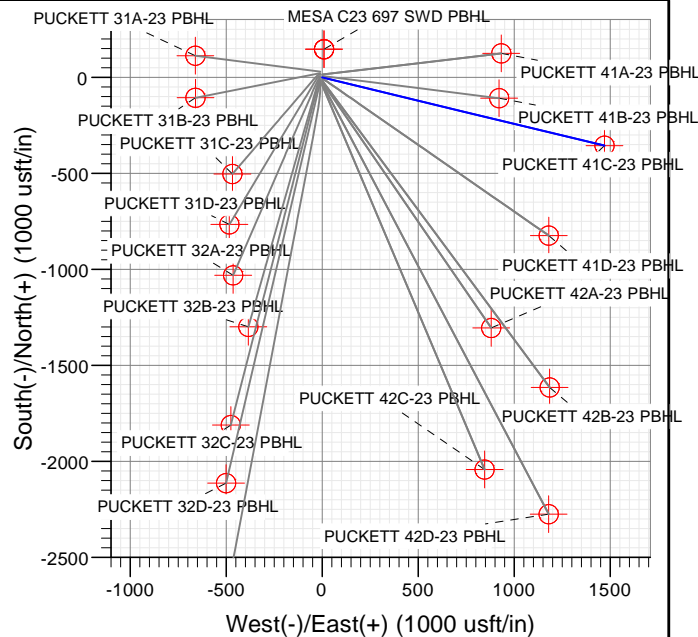
Project: Garfield County, CO (UTM 1
Site: S23-T6S-R97W (MESA C23
Well: PUCKETT 41C-23
Wellbore: OH
Design: PLAN #2

FORMATION TOP DETAILS

TVDPath	MDPath	Formation
6221.00	6378.26	OHIO_CREEK.MBL (TVD)
6456.00	6619.83	WILLIAMS_FORK.MBL (TVD)
7202.00	7375.58	TOP_GAS.MBL (TVD)
9120.00	9293.58	ROLLINS.MBL (TVD)
9270.00	9443.58	TD.MBL (TVD)



Type	Target	Target	Target	Target	Target	Target	Target	Target	Target	Target
TD	No Target (Freehand)	Origin	Type	N/S	E/W	From	TVD	Latitude	Longitude	
PUCKETT 41C-23 PBHL		2970.00	+N/-S	-355.29	+E/-W	1470.70	Latitude	39.514009	Longitude	-108.178666



WELL DETAILS: PUCKETT 41C-23

+N/-S	+E/-W	Northing	Ground Level:	8532.00	Latitude	Longitude
0.00	0.00	14361867.00	Easting	2434708.20	39.514985	-108.183877

CATHEDRAL



Cathedral Energy Services

Planning Report

Database:	USA EDM 5000 Multi Users DB	Local Co-ordinate Reference:	Well PUCKETT 41C-23
Company:	Caerus Oil & Gas	TVD Reference:	30' KB @ 8562.00usft (H&P 330)
Project:	Garfield County, CO (UTM 12N)	MD Reference:	30' KB @ 8562.00usft (H&P 330)
Site:	S23-T6S-R97W (MESA C23)	North Reference:	True
Well:	PUCKETT 41C-23	Survey Calculation Method:	Minimum Curvature
Wellbore:	OH		
Design:	PLAN #2		

Project	Garfield County, CO (UTM 12N)		
Map System:	Universal Transverse Mercator (US Survey Feet)	System Datum:	Mean Sea Level
Geo Datum:	NAD 1927 - Western US		
Map Zone:	Zone 12N (114 W to 108 W)		

Site		S23-T6S-R97W (MESA C23)			
Site Position:		Northing:	14,361,896.90 usft	Latitude:	39.515068
From:	Map	Easting:	2,434,697.40 usft	Longitude:	-108.183912
Position Uncertainty:	0.00 usft	Slot Radius:	13-3/16"	Grid Convergence:	1.79 °

Well	PUCKETT 41C-23					
Well Position	+N/-S	0.00 usft	Northing:	14,361,867.00 usft	Latitude:	39.514985
	+E/-W	0.00 usft	Easting:	2,434,708.20 usft	Longitude:	-108.183877
Position Uncertainty		0.00 usft	Wellhead Elevation:	0.00 usft	Ground Level:	8,532.00 usft

Wellbore	OH				
Magnetics	Model Name	Sample Date	Declination	Dip Angle	Field Strength
			(°)	(°)	(nT)
	HDGM	6/16/2016	9.80	65.87	51,812

Design	PLAN #2			
Audit Notes:				
Version:	Phase:	PLAN	Tie On Depth:	0.00
Vertical Section:	Depth From (TVD)	+N/-S	+E/-W	Direction
	(usft)	(usft)	(usft)	(°)
	0.00	0.00	0.00	103.58

Plan Sections										
Measured Depth (usft)	Inclination (°)	Azimuth (°)	Vertical Depth (usft)	+N/-S (usft)	+E/-W (usft)	Dogleg Rate (°/100usft)	Build Rate (°/100usft)	Turn Rate (°/100usft)	TFO (°)	Target
0.00	0.00	0.00	0.00	0.00	0.00	0.00	0.00	0.00	0.00	
300.00	0.00	0.00	300.00	0.00	0.00	0.00	0.00	0.00	0.00	
746.50	13.39	103.58	742.44	-12.20	50.50	3.00	3.00	0.00	103.58	
6,829.08	13.39	103.58	6,659.56	-343.09	1,420.20	0.00	0.00	0.00	0.00	
7,275.58	0.00	0.00	7,102.00	-355.29	1,470.70	3.00	-3.00	0.00	180.00	
9,443.58	0.00	0.00	9,270.00	-355.29	1,470.70	0.00	0.00	0.00	0.00	PUCKETT 41C-23 PE

Cathedral Energy Services

Planning Report

Database:	USA EDM 5000 Multi Users DB	Local Co-ordinate Reference:	Well PUCKETT 41C-23
Company:	Caerus Oil & Gas	TVD Reference:	30' KB @ 8562.00usft (H&P 330)
Project:	Garfield County, CO (UTM 12N)	MD Reference:	30' KB @ 8562.00usft (H&P 330)
Site:	S23-T6S-R97W (MESA C23)	North Reference:	True
Well:	PUCKETT 41C-23	Survey Calculation Method:	Minimum Curvature
Wellbore:	OH		
Design:	PLAN #2		

Planned Survey

Measured Depth (usft)	Inclination (°)	Azimuth (°)	Vertical Depth (usft)	+N/-S (usft)	+E/-W (usft)	Vertical Section (usft)	Dogleg Rate (°/100usft)	Build Rate (°/100u)	Comments / Formations
0.00	0.00	0.00	0.00	0.00	0.00	0.00	0.00	0.00	
100.00	0.00	0.00	100.00	0.00	0.00	0.00	0.00	0.00	
200.00	0.00	0.00	200.00	0.00	0.00	0.00	0.00	0.00	
300.00	0.00	0.00	300.00	0.00	0.00	0.00	0.00	0.00	
400.00	3.00	103.58	399.95	-0.61	2.54	2.62	3.00	3.00	
500.00	6.00	103.58	499.63	-2.46	10.17	10.46	3.00	3.00	
600.00	9.00	103.58	598.77	-5.52	22.86	23.51	3.00	3.00	
700.00	12.00	103.58	697.08	-9.80	40.57	41.74	3.00	3.00	
746.50	13.39	103.58	742.44	-12.20	50.50	51.95	3.00	3.00	
800.00	13.39	103.58	794.49	-15.11	62.55	64.35	0.00	0.00	
900.00	13.39	103.58	891.77	-20.55	85.07	87.52	0.00	0.00	
1,000.00	13.39	103.58	989.05	-25.99	107.59	110.68	0.00	0.00	
1,100.00	13.39	103.58	1,086.33	-31.43	130.11	133.85	0.00	0.00	
1,200.00	13.39	103.58	1,183.61	-36.87	152.62	157.01	0.00	0.00	
1,300.00	13.39	103.58	1,280.89	-42.31	175.14	180.18	0.00	0.00	
1,400.00	13.39	103.58	1,378.17	-47.75	197.66	203.35	0.00	0.00	
1,500.00	13.39	103.58	1,475.45	-53.19	220.18	226.51	0.00	0.00	
1,600.00	13.39	103.58	1,572.73	-58.63	242.70	249.68	0.00	0.00	
1,700.00	13.39	103.58	1,670.01	-64.07	265.22	272.84	0.00	0.00	
1,800.00	13.39	103.58	1,767.28	-69.51	287.73	296.01	0.00	0.00	
1,900.00	13.39	103.58	1,864.56	-74.95	310.25	319.18	0.00	0.00	
2,000.00	13.39	103.58	1,961.84	-80.39	332.77	342.34	0.00	0.00	
2,100.00	13.39	103.58	2,059.12	-85.83	355.29	365.51	0.00	0.00	
2,200.00	13.39	103.58	2,156.40	-91.27	377.81	388.68	0.00	0.00	
2,300.00	13.39	103.58	2,253.68	-96.71	400.33	411.84	0.00	0.00	
2,400.00	13.39	103.58	2,350.96	-102.15	422.84	435.01	0.00	0.00	
2,500.00	13.39	103.58	2,448.24	-107.59	445.36	458.17	0.00	0.00	
2,600.00	13.39	103.58	2,545.52	-113.03	467.88	481.34	0.00	0.00	
2,700.00	13.39	103.58	2,642.80	-118.47	490.40	504.51	0.00	0.00	
2,800.00	13.39	103.58	2,740.08	-123.91	512.92	527.67	0.00	0.00	
2,900.00	13.39	103.58	2,837.36	-129.35	535.44	550.84	0.00	0.00	
3,000.00	13.39	103.58	2,934.64	-134.79	557.95	574.00	0.00	0.00	
3,100.00	13.39	103.58	3,031.92	-140.23	580.47	597.17	0.00	0.00	
3,200.00	13.39	103.58	3,129.20	-145.67	602.99	620.34	0.00	0.00	
3,300.00	13.39	103.58	3,226.48	-151.11	625.51	643.50	0.00	0.00	
3,400.00	13.39	103.58	3,323.76	-156.55	648.03	666.67	0.00	0.00	
3,500.00	13.39	103.58	3,421.04	-161.99	670.55	689.84	0.00	0.00	
3,600.00	13.39	103.58	3,518.32	-167.43	693.07	713.00	0.00	0.00	
3,700.00	13.39	103.58	3,615.60	-172.87	715.58	736.17	0.00	0.00	
3,800.00	13.39	103.58	3,712.88	-178.31	738.10	759.33	0.00	0.00	
3,900.00	13.39	103.58	3,810.16	-183.75	760.62	782.50	0.00	0.00	
4,000.00	13.39	103.58	3,907.44	-189.19	783.14	805.67	0.00	0.00	
4,100.00	13.39	103.58	4,004.72	-194.63	805.66	828.83	0.00	0.00	
4,200.00	13.39	103.58	4,102.00	-200.07	828.18	852.00	0.00	0.00	
4,300.00	13.39	103.58	4,199.28	-205.51	850.69	875.16	0.00	0.00	
4,400.00	13.39	103.58	4,296.56	-210.95	873.21	898.33	0.00	0.00	
4,500.00	13.39	103.58	4,393.84	-216.39	895.73	921.50	0.00	0.00	
4,600.00	13.39	103.58	4,491.12	-221.83	918.25	944.66	0.00	0.00	
4,700.00	13.39	103.58	4,588.39	-227.27	940.77	967.83	0.00	0.00	
4,800.00	13.39	103.58	4,685.67	-232.71	963.29	991.00	0.00	0.00	
4,900.00	13.39	103.58	4,782.95	-238.15	985.80	1,014.16	0.00	0.00	
5,000.00	13.39	103.58	4,880.23	-243.59	1,008.32	1,037.33	0.00	0.00	

Cathedral Energy Services

Planning Report

Database:	USA EDM 5000 Multi Users DB	Local Co-ordinate Reference:	Well PUCKETT 41C-23
Company:	Caerus Oil & Gas	TVD Reference:	30' KB @ 8562.00usft (H&P 330)
Project:	Garfield County, CO (UTM 12N)	MD Reference:	30' KB @ 8562.00usft (H&P 330)
Site:	S23-T6S-R97W (MESA C23)	North Reference:	True
Well:	PUCKETT 41C-23	Survey Calculation Method:	Minimum Curvature
Wellbore:	OH		
Design:	PLAN #2		

Planned Survey									
Measured Depth (usft)	Inclination (°)	Azimuth (°)	Vertical Depth (usft)	+N/-S (usft)	+E/-W (usft)	Vertical Section (usft)	Dogleg Rate (°/100usft)	Build Rate (°/100u)	Comments / Formations
5,100.00	13.39	103.58	4,977.51	-249.03	1,030.84	1,060.49	0.00	0.00	
5,200.00	13.39	103.58	5,074.79	-254.47	1,053.36	1,083.66	0.00	0.00	
5,300.00	13.39	103.58	5,172.07	-259.91	1,075.88	1,106.83	0.00	0.00	
5,400.00	13.39	103.58	5,269.35	-265.35	1,098.40	1,129.99	0.00	0.00	
5,500.00	13.39	103.58	5,366.63	-270.79	1,120.91	1,153.16	0.00	0.00	
5,600.00	13.39	103.58	5,463.91	-276.22	1,143.43	1,176.32	0.00	0.00	
5,700.00	13.39	103.58	5,561.19	-281.66	1,165.95	1,199.49	0.00	0.00	
5,800.00	13.39	103.58	5,658.47	-287.10	1,188.47	1,222.66	0.00	0.00	
5,900.00	13.39	103.58	5,755.75	-292.54	1,210.99	1,245.82	0.00	0.00	
6,000.00	13.39	103.58	5,853.03	-297.98	1,233.51	1,268.99	0.00	0.00	
6,100.00	13.39	103.58	5,950.31	-303.42	1,256.02	1,292.15	0.00	0.00	
6,200.00	13.39	103.58	6,047.59	-308.86	1,278.54	1,315.32	0.00	0.00	
6,300.00	13.39	103.58	6,144.87	-314.30	1,301.06	1,338.49	0.00	0.00	
6,378.26	13.39	103.58	6,221.00	-318.56	1,318.68	1,356.62	0.00	0.00	OHIO_CREEK.MBL (TVD)
6,400.00	13.39	103.58	6,242.15	-319.74	1,323.58	1,361.65	0.00	0.00	
6,500.00	13.39	103.58	6,339.43	-325.18	1,346.10	1,384.82	0.00	0.00	
6,600.00	13.39	103.58	6,436.71	-330.62	1,368.62	1,407.99	0.00	0.00	
6,619.83	13.39	103.58	6,456.00	-331.70	1,373.08	1,412.58	0.00	0.00	WILLIAMS_FORK.MBL (TVD)
6,700.00	13.39	103.58	6,533.99	-336.06	1,391.14	1,431.15	0.00	0.00	
6,800.00	13.39	103.58	6,631.27	-341.50	1,413.65	1,454.32	0.00	0.00	
6,829.08	13.39	103.58	6,659.56	-343.09	1,420.20	1,461.06	0.00	0.00	
6,900.00	11.27	103.58	6,728.84	-346.64	1,434.92	1,476.20	3.00	-3.00	
7,000.00	8.27	103.58	6,827.38	-350.63	1,451.41	1,493.16	3.00	-3.00	
7,100.00	5.27	103.58	6,926.67	-353.39	1,462.86	1,504.95	3.00	-3.00	
7,200.00	2.27	103.58	7,026.44	-354.93	1,469.25	1,511.51	3.00	-3.00	
7,275.58	0.00	0.00	7,102.00	-355.29	1,470.70	1,513.01	3.00	-3.00	
7,300.00	0.00	0.00	7,126.42	-355.29	1,470.70	1,513.01	0.00	0.00	
7,375.58	0.00	0.00	7,202.00	-355.29	1,470.70	1,513.01	0.00	0.00	TOP_GAS.MBL (TVD)
7,400.00	0.00	0.00	7,226.42	-355.29	1,470.70	1,513.01	0.00	0.00	
7,500.00	0.00	0.00	7,326.42	-355.29	1,470.70	1,513.01	0.00	0.00	
7,600.00	0.00	0.00	7,426.42	-355.29	1,470.70	1,513.01	0.00	0.00	
7,700.00	0.00	0.00	7,526.42	-355.29	1,470.70	1,513.01	0.00	0.00	
7,800.00	0.00	0.00	7,626.42	-355.29	1,470.70	1,513.01	0.00	0.00	
7,900.00	0.00	0.00	7,726.42	-355.29	1,470.70	1,513.01	0.00	0.00	
8,000.00	0.00	0.00	7,826.42	-355.29	1,470.70	1,513.01	0.00	0.00	
8,100.00	0.00	0.00	7,926.42	-355.29	1,470.70	1,513.01	0.00	0.00	
8,200.00	0.00	0.00	8,026.42	-355.29	1,470.70	1,513.01	0.00	0.00	
8,300.00	0.00	0.00	8,126.42	-355.29	1,470.70	1,513.01	0.00	0.00	
8,400.00	0.00	0.00	8,226.42	-355.29	1,470.70	1,513.01	0.00	0.00	
8,500.00	0.00	0.00	8,326.42	-355.29	1,470.70	1,513.01	0.00	0.00	
8,600.00	0.00	0.00	8,426.42	-355.29	1,470.70	1,513.01	0.00	0.00	
8,700.00	0.00	0.00	8,526.42	-355.29	1,470.70	1,513.01	0.00	0.00	
8,800.00	0.00	0.00	8,626.42	-355.29	1,470.70	1,513.01	0.00	0.00	
8,900.00	0.00	0.00	8,726.42	-355.29	1,470.70	1,513.01	0.00	0.00	
9,000.00	0.00	0.00	8,826.42	-355.29	1,470.70	1,513.01	0.00	0.00	
9,100.00	0.00	0.00	8,926.42	-355.29	1,470.70	1,513.01	0.00	0.00	
9,200.00	0.00	0.00	9,026.42	-355.29	1,470.70	1,513.01	0.00	0.00	
9,293.58	0.00	0.00	9,120.00	-355.29	1,470.70	1,513.01	0.00	0.00	ROLLINS.MBL (TVD)
9,300.00	0.00	0.00	9,126.42	-355.29	1,470.70	1,513.01	0.00	0.00	
9,400.00	0.00	0.00	9,226.42	-355.29	1,470.70	1,513.01	0.00	0.00	
9,443.58	0.00	0.00	9,270.00	-355.29	1,470.70	1,513.01	0.00	0.00	TD.MBL (TVD)

Cathedral Energy Services

Planning Report

Database:	USA EDM 5000 Multi Users DB	Local Co-ordinate Reference:	Well PUCKETT 41C-23
Company:	Caerus Oil & Gas	TVD Reference:	30' KB @ 8562.00usft (H&P 330)
Project:	Garfield County, CO (UTM 12N)	MD Reference:	30' KB @ 8562.00usft (H&P 330)
Site:	S23-T6S-R97W (MESA C23)	North Reference:	True
Well:	PUCKETT 41C-23	Survey Calculation Method:	Minimum Curvature
Wellbore:	OH		
Design:	PLAN #2		

Targets									
Target Name									
- hit/miss target	Dip Angle	Dip Dir.	TVD	+N/-S	+E/-W	Northing	Easting	Latitude	Longitude
- Shape	(°)	(°)	(usft)	(usft)	(usft)	(usft)	(usft)		
PUCKETT 41C-23 PBHI	0.00	0.00	9,270.00	-355.29	1,470.70	14,361,557.90	2,436,189.30	39.514009	-108.178666
- plan hits target center									
- Circle (radius 50.00)									

Formations						
Measured Depth	Vertical Depth	Name	Lithology	Dip	Dip Direction	
(usft)	(usft)			(°)	(°)	
6,378.26	6,221.00	OHIO_CREEK.MBL (TVD)				
6,619.83	6,456.00	WILLIAMS_FORK.MBL (TVD)				
7,375.58	7,202.00	TOP_GAS.MBL (TVD)				
9,293.58	9,120.00	ROLLINS.MBL (TVD)				
9,443.58	9,270.00	TD.MBL (TVD)				