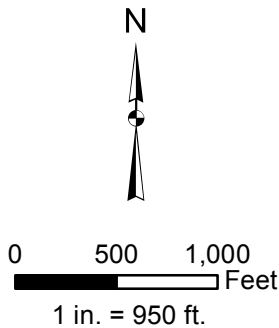
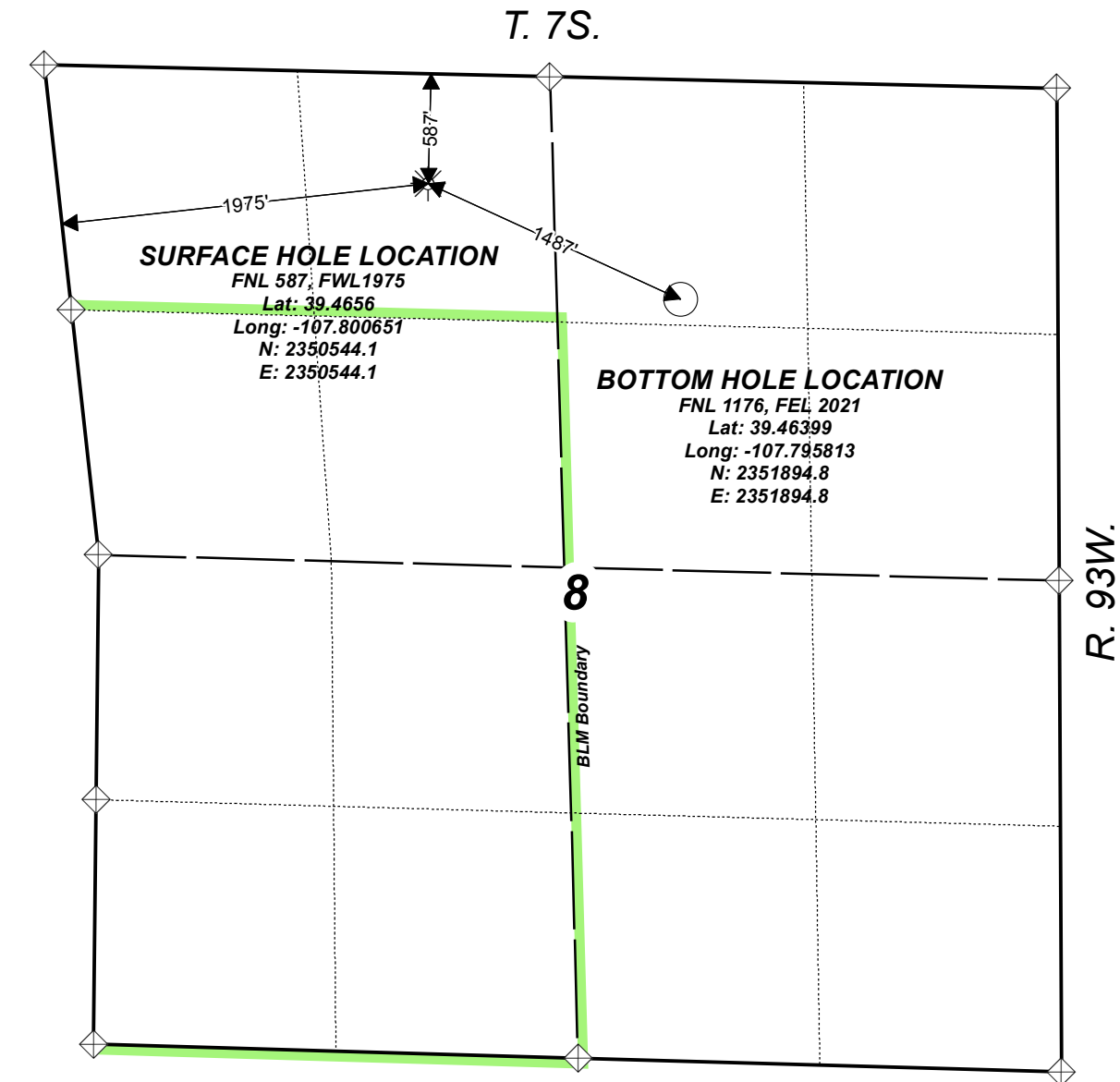


Federal RU 531-8



Legend

- ◆ Section Monument
- ☼ Surface Hole Location
- Bottom Hole Location



Map Date: 7/21/2016

Scale: 1" = 950'

Page 1 of 1

Well Location Plat

TEP Rocky Mountain LLC

NE1/4 NW1/4, SECTION 8,
T.7S., R.93W, of the 6th. P.M.
GARFIELD COUNTY, COLORADO