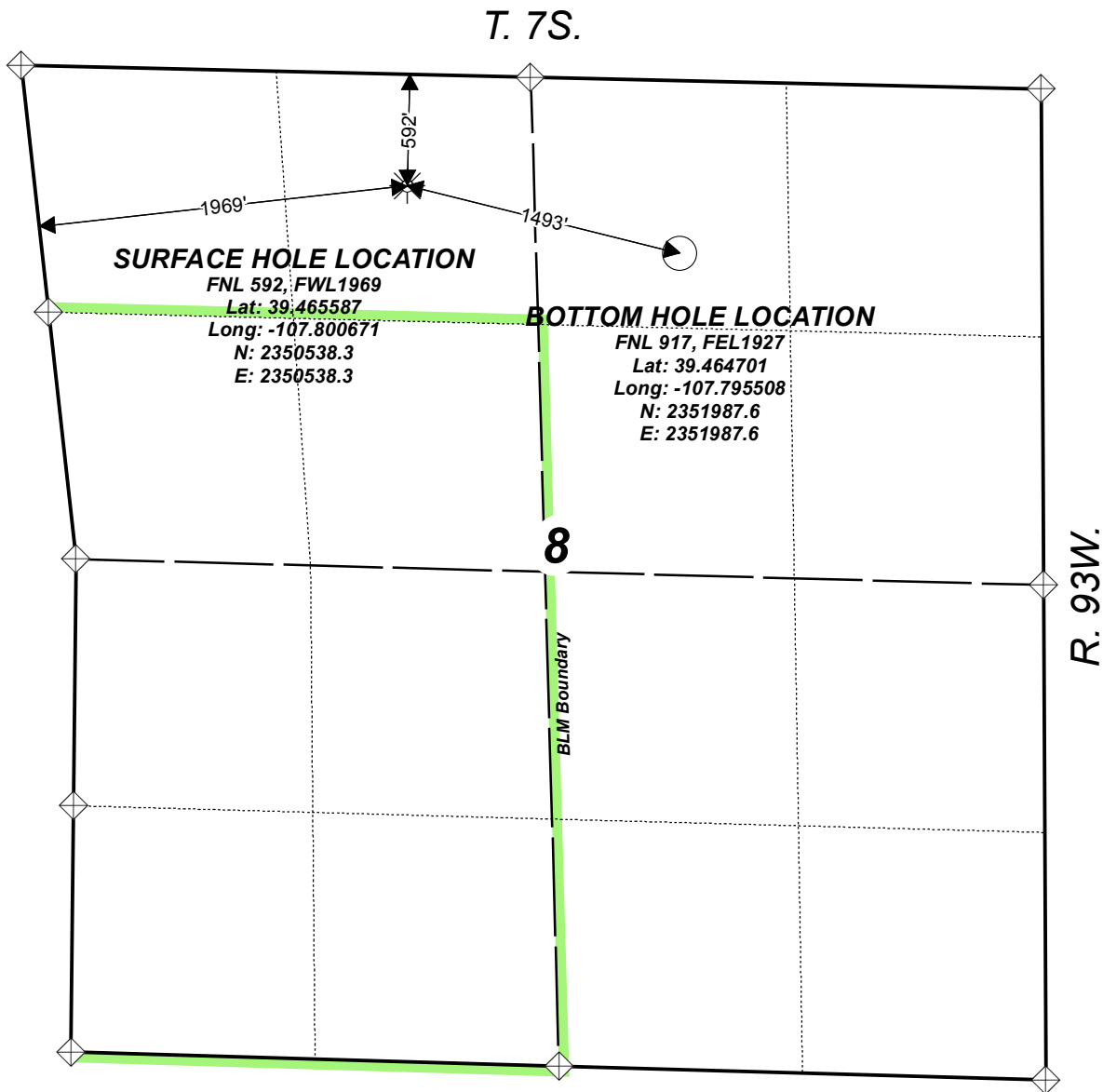


Federal RU 431-8



SURFACE HOLE LOCATION

FNL 592, FWL1969

Lat: 39.465587

Long: -107.800671

N: 2350538.3

E: 2350538.3

BOTTOM HOLE LOCATION

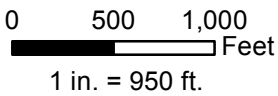
FNL 917, FEL1927

Lat: 39.464701




Long: -107.795508

N: 2351987.6

E: 2351987.6



Legend

-  Section Monument
-  Surface Hole Location
-  Bottom Hole Location



Map Date: 7/21/2016

Scale: 1" = 950'

Page 1 of 1

Well Location Plat

TEP Rocky Mountain LLC

NE1/4 NW1/4, SECTION 8,
T.7S., R.93W, of the 6th. P.M.
GARFIELD COUNTY, COLORADO