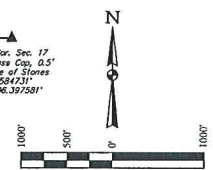
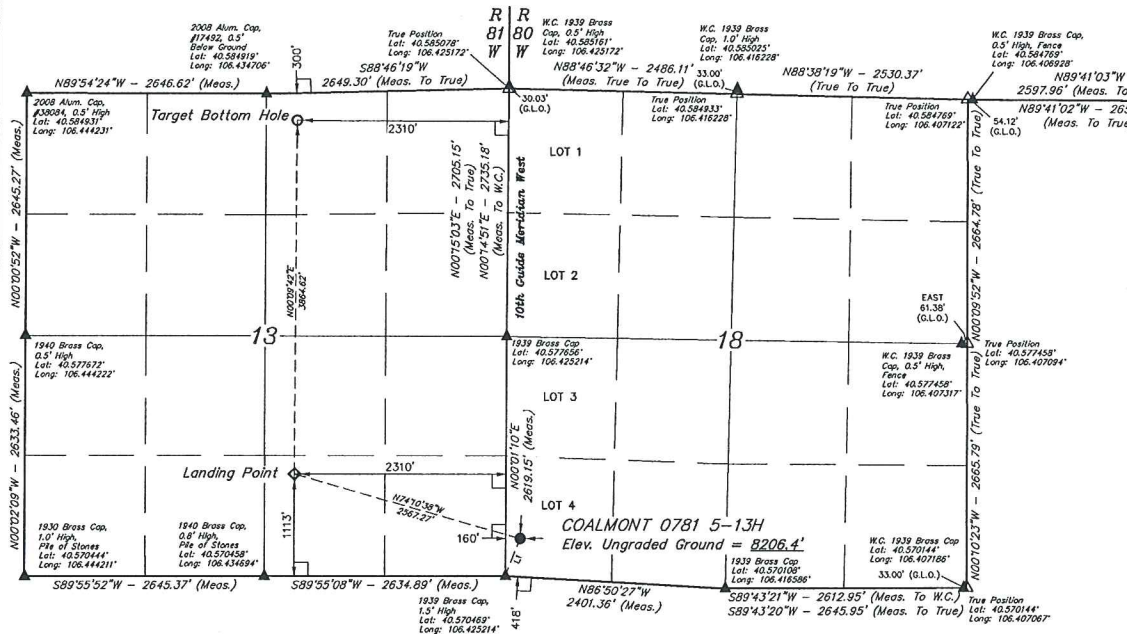


T7N, R80W, 6th P.M.

SandRidge Exploration & Production, LLC

COALMONT 0781 5-13H
LOT 4, SECTION 18, T7N, R80W, 6th P.M.
JACKSON COUNTY, COLORADO

BASIS OF BEARINGS
BASIS OF BEARINGS IS A G.P.S. OBSERVATION
BASIS OF ELEVATION
SPOT ELEVATION AT THE SOUTHEAST CORNER OF SECTION 29,
T7N, R80W, 6th P.M., TAKEN FROM THE COALMONT QUADRANGLE,
COLORADO, JACKSON COUNTY 7.5 MINUTE QUAD.
(TOPOGRAPHIC MAP) PUBLISHED BY THE UNITED STATES
DEPARTMENT OF THE INTERIOR, GEOLOGICAL SURVEY. SAID
ELEVATION IS MARKED AS BEING 8156 FEET



LINE TABLE		
LINE	DIRECTION	LENGTH
L1	N21°21'00"E	440.26'

- LEGEND:**
- 90° SYMBOL
 - PROPOSED WELLHEAD
 - LANDING POINT
 - TARGET BOTTOM HOLE
 - SECTION CORNERS LOCATED, (NAD 83)
 - SECTION CORNERS RE-ESTABLISHED, (Not Set on Ground) (NAD 83)

NAD 83 (SURFACE LOCATION)	NAD 83 (LANDING POINT)	NAD 83 (TARGET BOTTOM HOLE)
LATITUDE = 40°34'17.74" (40.571594)	LATITUDE = 40°34'24.65" (40.573514)	LATITUDE = 40°35'02.82" (40.584117)
LONGITUDE = 106°15'28.69" (106.424636)	LONGITUDE = 106°20'00.69" (106.433525)	LONGITUDE = 106°26'00.57" (106.433492)
NAD 27 (SURFACE LOCATION)	NAD 27 (LANDING POINT)	NAD 27 (TARGET BOTTOM HOLE)
LATITUDE = 40°34'17.52" (40.571617)	LATITUDE = 40°34'24.72" (40.573533)	LATITUDE = 40°35'02.90" (40.584139)
LONGITUDE = 106°15'28.58" (106.424605)	LONGITUDE = 106°20'00.58" (106.432939)	LONGITUDE = 106°25'58.45" (106.432903)
STATE PLANE NAD 83 (CO. NORTH)	STATE PLANE NAD 83 (CO. NORTH)	STATE PLANE NAD 83 (CO. NORTH)
N: 1453412.48 E: 274115.18	N: 1453113.27 E: 274057.76	N: 1456999.96 E: 2740723.94
STATE PLANE NAD 27 (CO. NORTH)	STATE PLANE NAD 27 (CO. NORTH)	STATE PLANE NAD 27 (CO. NORTH)
N: 452410.31 E: 1743791.82	N: 453133.07 E: 1748930.11	N: 456997.29 E: 1748990.36

CERTIFICATE OF RECORD
THIS IS TO CERTIFY THAT THE ABOVE
NOTES OF ACTUAL SURVEYS MADE
AND THAT THE SAME ARE TRUE AND
KNOWLEDGE AND BELIEF.
REGISTERED LAND SURVEYOR
RECEIVED JAN 20 2024
STATE OF COLORADO
16

FDOP = 1.4

REV: 4 07-14-16 M.D. (WELL NAME CHANGE)

UINTAH
ENGINEERING & LAND SURVEYING

UELS, LLC
Corporate Office 85 South 200 East
Vernal, UT 84078 • (435) 789-1817

SURVEYED BY	DARREN SHANKS, G.W.	06-10-16	SCALE
DRAWN BY	T.B.	06-16-16	1" = 1000'

WELL LOCATION PLAT