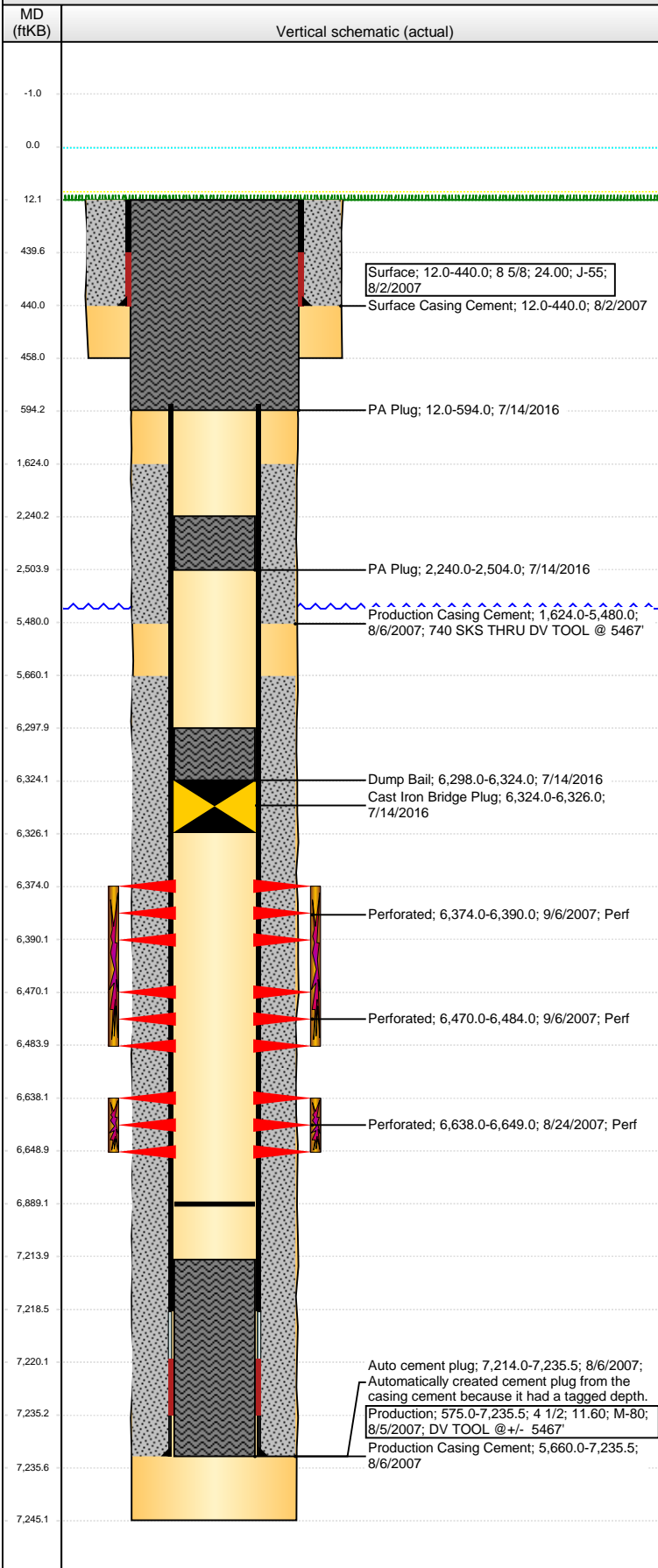


Well Name: WELLS RANCH USX BB01-06

VERTICAL - ORIGINAL HOLE, 8/17/2016 7:22:17 AM



Well Header

| | | | |
|-------------------------------------|-------------------------------|-----------------------|-------------------------|
| API 05-123-26098 | Business Unit DJ BASIN | District 15 | Well Config VERTICAL |
| Original KB Elevation (ft) 4,724 | KB - GL / MSL (ftKB) 12.00 | Spud Date 8/1/2007 | P & A Date 7/14/2016 |

Comment

DV TOOL @ +/- 5467'

Directions To Well

WCR 67 & WCR 68, E 0.2, S 2.6 TO COW CAMP, E 0.4, SE 1.5, S AND SE 0.3 INTO LOCATION.

Congressional Location

| | | | | | | |
|-----------------|-----------------|--------------|-----------------|------------------------|---------------|---------------|
| Quarter 3 SE | Quarter 4 NW | Section 1 | Township 5 N | Twship N/S Dir 63 W | Range 63 W | Range E/W Dir |
|-----------------|-----------------|--------------|-----------------|------------------------|---------------|---------------|

Bottom Hole Location

| | | | |
|---------------------------|------------------|-------------------------|------------------|
| North-South Distance (ft) | From N or S Line | East-West Distance (ft) | From E or W Line |
|---------------------------|------------------|-------------------------|------------------|

Plug Back Total Depths

| Date | Depth (ftKB) | Method | Com |
|------------|--------------|----------------|--|
| 8/5/2007 | 7,218.5 | CASING TALLY | FLOAT COLLAR |
| 8/24/2007 | 7,214.0 | CASED HOLE LOG | DEPTH-LOGGER/CBL |
| 9/19/2011 | 7,009.0 | TUBING TALLY | RUN BIT AND SCRAPER PRIOR TO CODELL REF... |
| 10/14/2011 | 6,889.1 | TUBING TALLY | FILL |

Wellbore Sections

| Section Des | Size (in) | Act Top, MD (ftKB) | Act Btm, MD (ftKB) |
|-------------|-----------|--------------------|--------------------|
| SURFACE | 12 1/4 | 12 | 458 |
| PRODUCTION | 7 7/8 | 458 | 7,245 |

Zone Statuses

| Zone Name | Status Date | Status | Fluid Type | Job | Prod Method |
|-----------|-------------|--------|------------|------------------|-------------|
| NIOBRARA | 9/9/2007 | PR | | DRILLING/CO... | |
| NIOBRARA | 3/12/2012 | PR | | RE-FRAC, 9/16... | |
| NIOBRARA | 7/14/2016 | P&A | | ABANDON WE... | |
| CODELL | 9/9/2007 | PR | | DRILLING/CO... | |
| CODELL | 10/31/2011 | PR | | RE-FRAC, 9/16... | |
| CODELL | 3/12/2012 | PR | | RE-FRAC, 9/16... | |
| CODELL | 7/14/2016 | P&A | | ABANDON WE... | |

Casing Strings

Surface, 440.0ftKB

| Casing Description | Run Date | OD (in) | Wt/Len (l...) | Grade | Top, MD (ft...) | MD (ftKB) |
|--------------------|----------|---------|---------------|-------|-----------------|-----------|
| Surface | 8/2/2007 | 8 5/8 | 24.00 | J-55 | 12.0 | 440.0 |

Production, 7,235.5ftKB

| Casing Description | Run Date | OD (in) | Wt/Len (l...) | Grade | Top, MD (ft...) | MD (ftKB) |
|--------------------|----------|---------|---------------|-------|-----------------|-----------|
| Production | 8/5/2007 | 4 1/2 | 11.60 | M-80 | 12.0 | 7,235.5 |

Cement

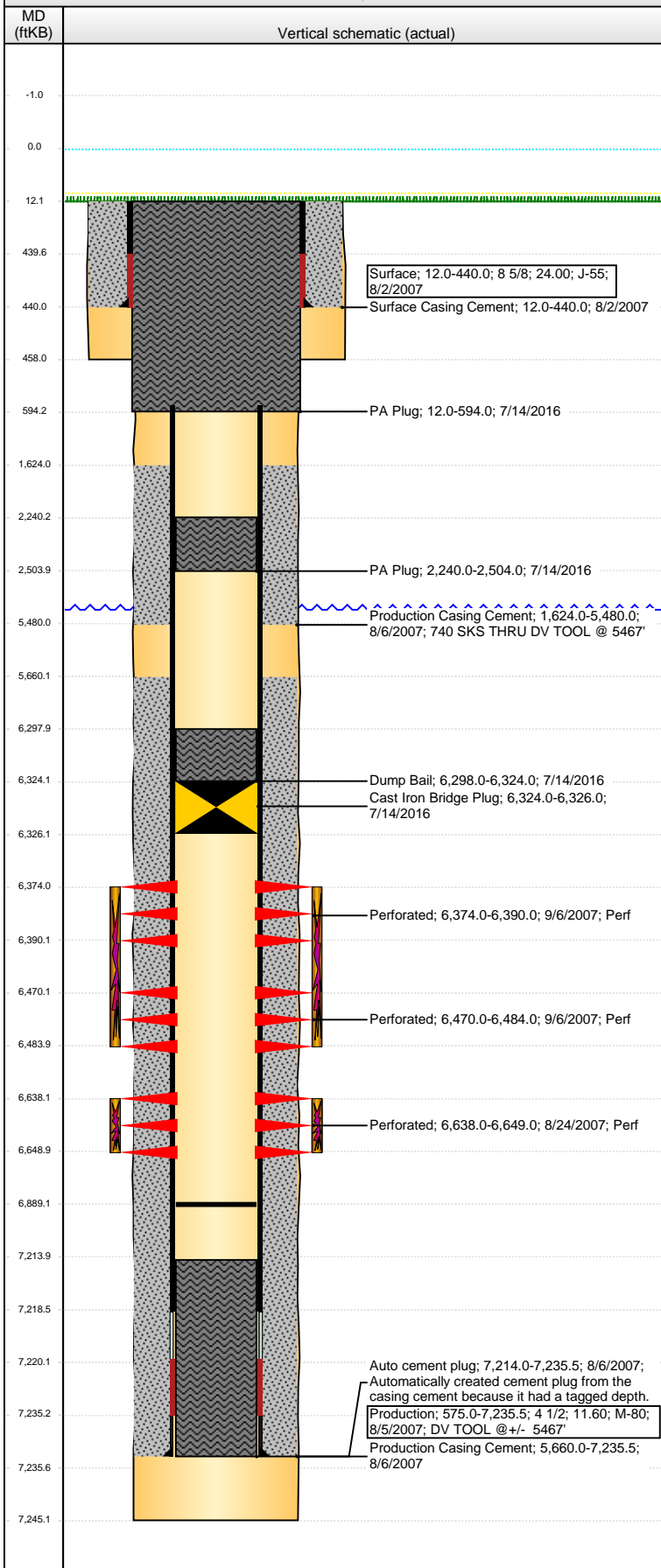
| Description | Top Depth (ftKB) | Bottom Depth (ftKB) |
|--------------------------|------------------|---------------------|
| Surface Casing Cement | 12.0 | 440.0 |
| Production Casing Cement | 1,624.0 | 5,480.0 |
| Production Casing Cement | 5,660.0 | 7,235.5 |
| Production Casing Cement | 5,660.0 | 7,235.5 |
| Dump Bail | 6,298.0 | 6,324.0 |
| PA Plug | 2,240.0 | 2,504.0 |
| PA Plug | 12.0 | 594.0 |

Tubing Strings

| Tubing Description | Run Date | String... | ID (in) | Wt (lb/ft) | Grade | Len (ft) | Set De... |
|----------------------|------------|-----------|---------|------------|-------|----------|-----------|
| Tubing - Workstring | 6/25/2011 | 2 3/8 | | 4.70 | J-55 | 6,608.00 | |
| Tubing - Frac string | 9/20/2011 | 2 7/8 | 2.441 | 6.50 | N-80 | 6,568.04 | |
| Tubing - Frac string | 10/11/2011 | 2 7/8 | 2.441 | 6.50 | N-80 | 6,284.85 | |
| Tubing - Production | 10/14/2011 | 2 3/8 | 1.995 | 4.70 | J-55 | 6,609.82 | |

Well Name: WELLS RANCH USX BB01-06

VERTICAL - ORIGINAL HOLE, 8/17/2016 7:22:20 AM



| Perforation Data | | | | | |
|------------------------|------------|--------------------|------------|------------|-----------|
| Zone | Brnch/St g | Entered Shot Total | Top (ftKB) | Btm (ftKB) | Date |
| NIORARA, ORIGINAL HOLE | A | 64 | 6,374.00 | 6,390.00 | 9/6/2007 |
| NIORARA, ORIGINAL HOLE | B | 56 | 6,470.00 | 6,484.00 | 9/6/2007 |
| CODELL, ORIGINAL HOLE | | 44 | 6,638.00 | 6,649.00 | 8/24/2007 |

| Stimulations & Treatments | | | |
|---------------------------|------------------------|--------------------------------|------------------|
| Date | Zone | Primary Job Type | |
| 9/6/2007 | NIORARA, ORIGINAL HOLE | DRILLING/COMPLETION - ORIGINAL | |
| Technical Result | | Tech Result Details | Tech Result Note |
| Comment | | | |

| Date | Zone | Primary Job Type | |
|------------------|-----------------------|--------------------------------|------------------|
| 9/6/2007 | CODELL, ORIGINAL HOLE | DRILLING/COMPLETION - ORIGINAL | |
| Technical Result | | Tech Result Details | Tech Result Note |
| Comment | | | |

| Date | Zone | Primary Job Type | |
|------------------|-----------------------|---------------------|------------------|
| 10/8/2011 | CODELL, ORIGINAL HOLE | RE-FRAC | |
| Technical Result | | Tech Result Details | Tech Result Note |
| Failure | | Mechanical | |
| Comment | | | |

ABORTED
(CODELL): BREAK - 2703 PSI @ 0.8 BPM. ISIP 2846, 5 MIN - 2193. AFTER APPROX. 470 BBLS PRESSURE ON ANNULUS BEGAN TO INCREASE. ANNULUS PRESSURE WAS BLED OFF AND ONCE CLOSE IN QUICKLY RETURNED TO ITS PRESSURE OF 1500 PSI. PUMPS WERE BROUGHT OFF LINE AND ANNULUS WAS BLED OFF AGAIN. WHILE NOT PUMPING ONCE THE ANNULUS WAS CLOSED THE PRESSURE CLIMBED AND LEVELED OFF AT 300 PSI. PRESSURE THEN WAS INCREASED TO 2000 PSI ON THE ANNULUS WITH THE BELIEF THE COMMUNICATION MAY HAVE BEEN THROUGH FORMATION. RETURNED TO PUMPING ON THE TUBING AND ONCE TO RATE OF 14 BPM ANNULUS PRESSURE BEGAN TO RISE AGAIN AND PEAKED AT 2500. ANNULAR BOP OF RIG ONLY GOOD TO 3000 PSI. STOPPED PUMPING AGAIN AND BLED OFF ANNULUS DOWN TO 2000 PSI. BEGAN PUMPING ON TUBING AGAIN ONLY PUMPING AT 10 BPM AND PUMPED 0.5 PSA SAND TO ATTEMPT TO DETERMINE COLLAR LEAK OR FORMATION COMMUNICATION. ANNULUS PRESSURE BEGAN TO RISE AGAIN JUST AFTER SAND ENTERED FORMATION. BACKSIDE PRESSURE THEN WAS BROUGHT TO A WORKING PRESSURE OF 2500 AND ATTEMPTED TO PUMP INTO AGAIN SLOWLY AND SAW COMMUNICATION QUICKLY WITH PRESSURES APPROACHING 2800 PSI ON ANNULUS. ABLE TO FLUSH WELL WITH WATER AT 4 BPM AND CALLED JOB BEFORE MORE SAND AND PRESSURE WERE ENTERED INTO WELLBORE. RIG UNABLE TO WORK ON TUBING BECAUSE OF PRESSURE ON ANNULUS AND TUBING.

| Date | Zone | Primary Job Type | |
|------------------|-----------------------|---------------------|------------------|
| 10/12/2011 | CODELL, ORIGINAL HOLE | RE-FRAC | |
| Technical Result | | Tech Result Details | Tech Result Note |
| Success | | According to Plan | |
| Comment | | | |

(CODELL RF) ISIP 3104, 5 MIN 2513, SHORT SD DUE TO BLENDER HYDRAULIC TANK OVERFILLED, CONTINUED WITH JOB PER DESIGN. WET SAND CAUSED DROP IN DENSITY ON 4PPG. AVERAGES: PRESSURE 4023, TEMP 70.49, pH 10.5, VISC 25.46. POST ISIP 3171, POST 5 MIN 3145, NOLTE POSITIVE

| Other In Hole | | | | |
|---------------|-----------------------|---------|------------|------------|
| Run Date | Des | OD (in) | Top (ftKB) | Btm (ftKB) |
| 7/14/2016 | Cast Iron Bridge Plug | 3.99 | 6,324.0 | 6,326.0 |

| Logs | | | |
|-----------|----------------------|----------------|----------------|
| Date | Type | Top, MD (ftKB) | Btm, MD (ftKB) |
| 8/5/2007 | COMPENSATED DENSITY | 2,650.0 | 7,223.0 |
| 8/5/2007 | DIFL/DENS/GR/GRD/CAL | 439.0 | 7,243.0 |
| 9/24/2007 | CBL/CCL/GR | 1,490.0 | 7,213.0 |
| 10/1/2014 | GYRO | 12.0 | 6,600.0 |