

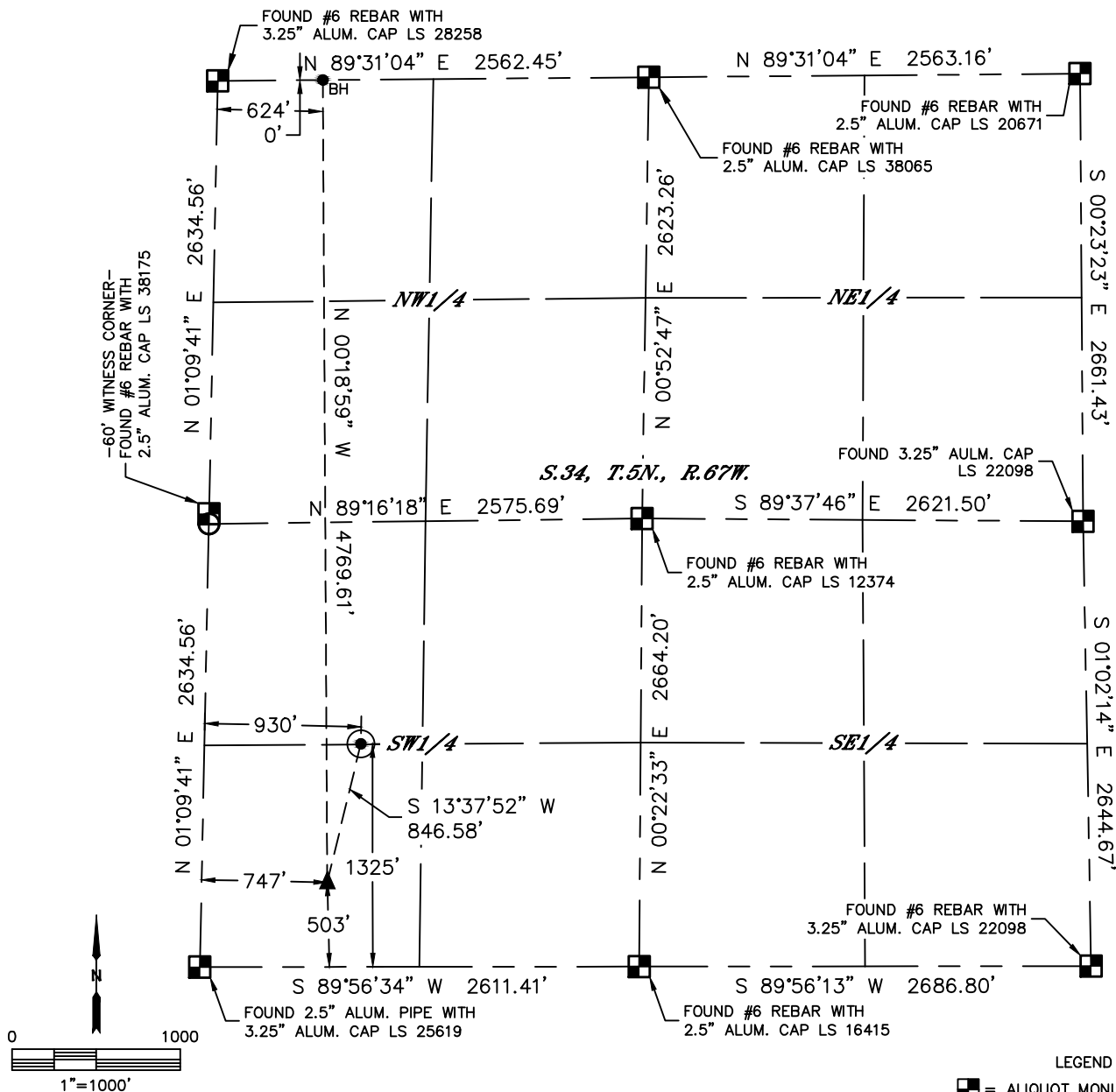


Lat40°, Inc. 6250 W. 10th Street, Unit 2, Greeley, CO 970-515-5294

WELL LOCATION CERTIFICATE

NELSON 34I-321

SECTION: 34
TOWNSHIP: 5N
RANGE: 67W
6TH. P.M.
WELD COUNTY, CO



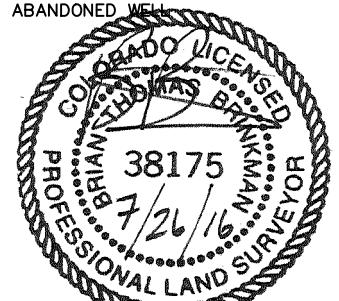
CLIENT: PDC ENERGY						LANDMAN: JEFF HINDMARSH			
INSTRUMENT OPERATOR: JIM REIB						SURVEY DATE: 7/8/2016		SURFACE USE: CROP LAND	
SHL FOOTAGE				SHL LAT °	SHL LONG °	SHL PDOP	SHL ELEV (FT.)	SHL 1/4/1/4	SHL S-T-R
1325	FSL	930	FWL	40.35258	-104.88522	2.4	4765	NWSW	34-5-67

BHL FOOTAGE				BHL LAT °	BHL LONG °	BHL S-T-R	EP LAT °	EP LONG °	EP S-T-R
0	FNL	624	FWL	40.36341	-104.88593	34-5-67	40.35032	-104.88595	34-5-67

NEAREST CULTURAL ITEMS	
BUILDING	±621' NW
BUILDING UNIT	±1257' NW
HIGH OCCUPANCY BUILDING UNIT	5280'+
DESIGNATED OUTSIDE ACTIVITY AREA	5280'+
PUBLIC ROAD (COUNTY ROAD 52)	±3944' N
ABOVE GROUND UTILITY	±523' NW
RAILROAD	±851' NE
PROPERTY LINE	±930' W

NOTE:
1) Bearings shown are Grid Bearings of the Colorado State Plane Coordinate System, North Zone, North American Datum 1983. The lineal dimensions as contained herein are based upon the "U.S. Survey Foot."
2) Distances to section lines measured at 90 degrees from said section lines.
3) Ground elevations are based on an observed GPS elevation (NAVD 1988 DATUM).
4) Latitude and Longitude shown are (NAD 83 DATUM).
5) IMPROVEMENTS: See LOCATION DRAWING for all visible improvements within 500' of oil and gas location.
6) This map does not represent a boundary survey.

- LEGEND
- AL = ALIQUOT MONUMENT AS DESCRIBED
 - CAL = CALCULATED POSITION
 - SHL = SURFACE HOLE LOCATION (SHL)
 - EP = ENTRY POINT LOCATION (EP)
 - BHL = BOTTOM HOLE LOCATION (BHL)
 - EW = EXISTING WELL
 - AW = ABANDONED WELL



Brian T. Brinkman—On behalf of Lat40°, Inc.
Colorado Licensed Professional Land Surveyor No. 38175
DATE: 7/26/2016
PROJECT#: 2015134