

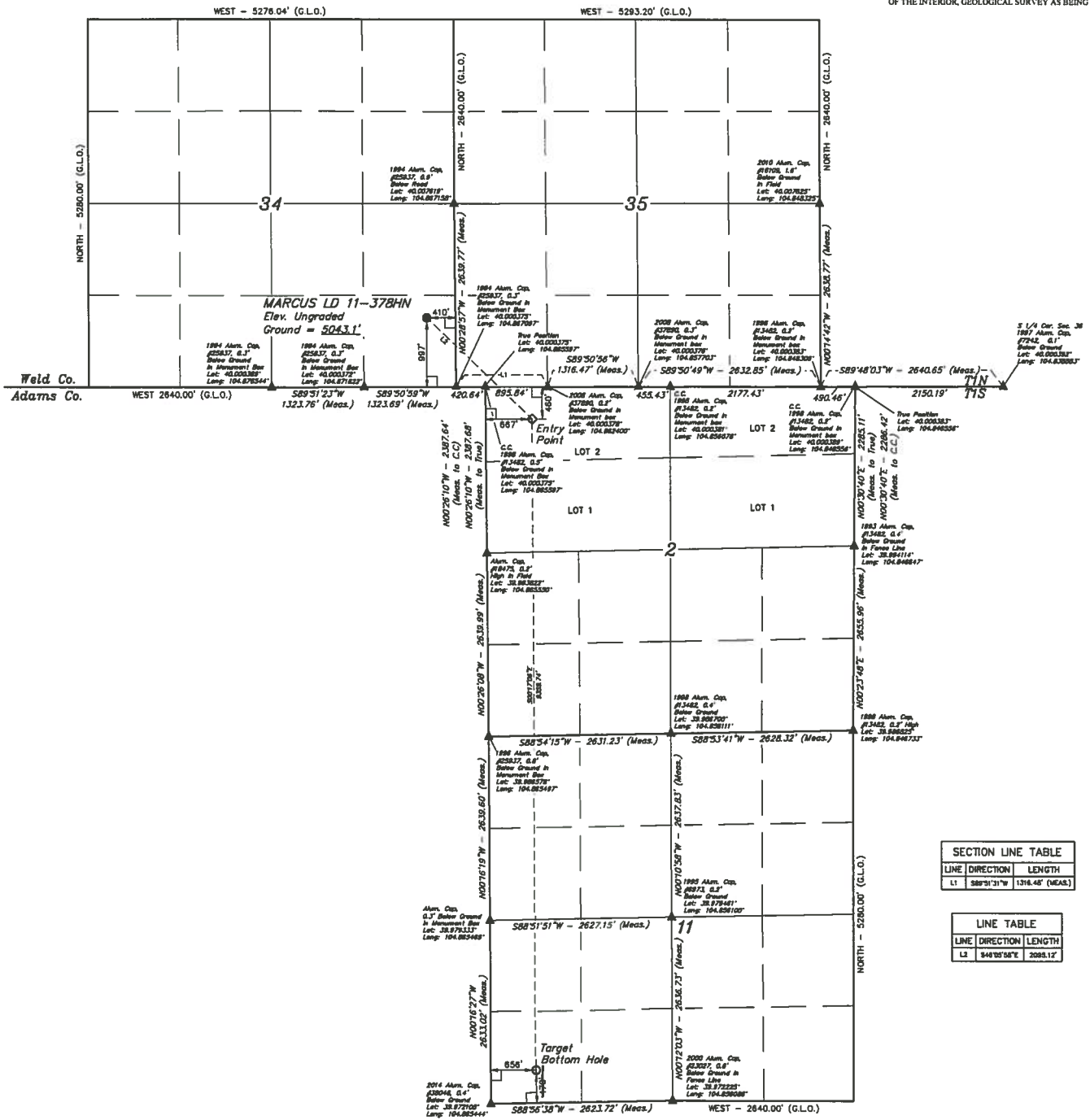
**LEGEND:**  
 - 90° SYMBOL  
 - PROPOSED WELLHEAD  
 - ENTRY POINT  
 - TARGET BOTTOM HOLE  
 - SECTION CORNERS LOCATED

T1N, R67W, 6th P.M.



**BASIS OF BEARINGS**  
 BASIS OF BEARINGS IS A G.P.S. OBSERVATION

**BASIS OF ELEVATION**  
 BENCHMARK, IR 53 5026 LOCATED IN THE SW 1/4 SE 1/4 OF SECTION 18, T1N, R68W, 6th P.M., TAKEN FROM 1988 PUBLISHED DATUM BY THE UNITED STATES DEPARTMENT OF THE INTERIOR, GEOLOGICAL SURVEY AS BEING 5028 FEET



SECTION LINE TABLE		
LINE	DIRECTION	LENGTH
L1	S89°51'31"W	1316.45' (MEAS.)

LINE TABLE		
LINE	DIRECTION	LENGTH
L2	S46°50'58"E	2065.12'

**CERTIFICATE OF RECORDING**  
 THIS IS TO CERTIFY THAT THE ABOVE DESCRIBED SURVEY WAS MADE BY THE UNDERSIGNED, A LICENSED LAND SURVEYOR, AND THAT THE SAME ARE TRUE AND CORRECT TO THE BEST OF HIS KNOWLEDGE AND BELIEF.

**GREAT WESTERN OIL & GAS COMPANY**  
 MARCUS LD 11-378HN  
 SE 1/4 SE 1/4, SECTION 34, T1N, R67W, 6th P.M.  
 WELD COUNTY, COLORADO



**UELS, LLC**  
 Corporate Office • 85 South 200 East  
 Vernal, UT 84078 • (435) 785-1917

PDOP = 1.4

NAD 83 (TARGET BOTTOM HOLE)	NAD 83 (ENTRY POINT)	NAD 83 (SURFACE LOCATION)
LATITUDE = 39°52'13.4" (N 97543)	LATITUDE = 39°52'13.4" (N 97543)	LATITUDE = 39°52'13.4" (N 97543)
LONGITUDE = 104°51'43.28" (W 8462575)	LONGITUDE = 104°51'43.28" (W 8462575)	LONGITUDE = 104°51'43.28" (W 8462575)
NAD 83 (TARGET BOTTOM HOLE)	NAD 83 (ENTRY POINT)	NAD 83 (SURFACE LOCATION)
LATITUDE = 39°52'13.4" (N 97543)	LATITUDE = 39°52'13.4" (N 97543)	LATITUDE = 39°52'13.4" (N 97543)
LONGITUDE = 104°51'43.28" (W 8462575)	LONGITUDE = 104°51'43.28" (W 8462575)	LONGITUDE = 104°51'43.28" (W 8462575)

SURVEYED BY: JARED CHRISTOPHER, J.C.	DATE: 11-30-14
DRAWN BY: J.W.	DATE DRAWN: 12-01-14
SCALE: 1" = 1000'	REVISED: 00-00-00
<b>WELL LOCATION PLAN</b>	