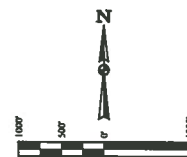


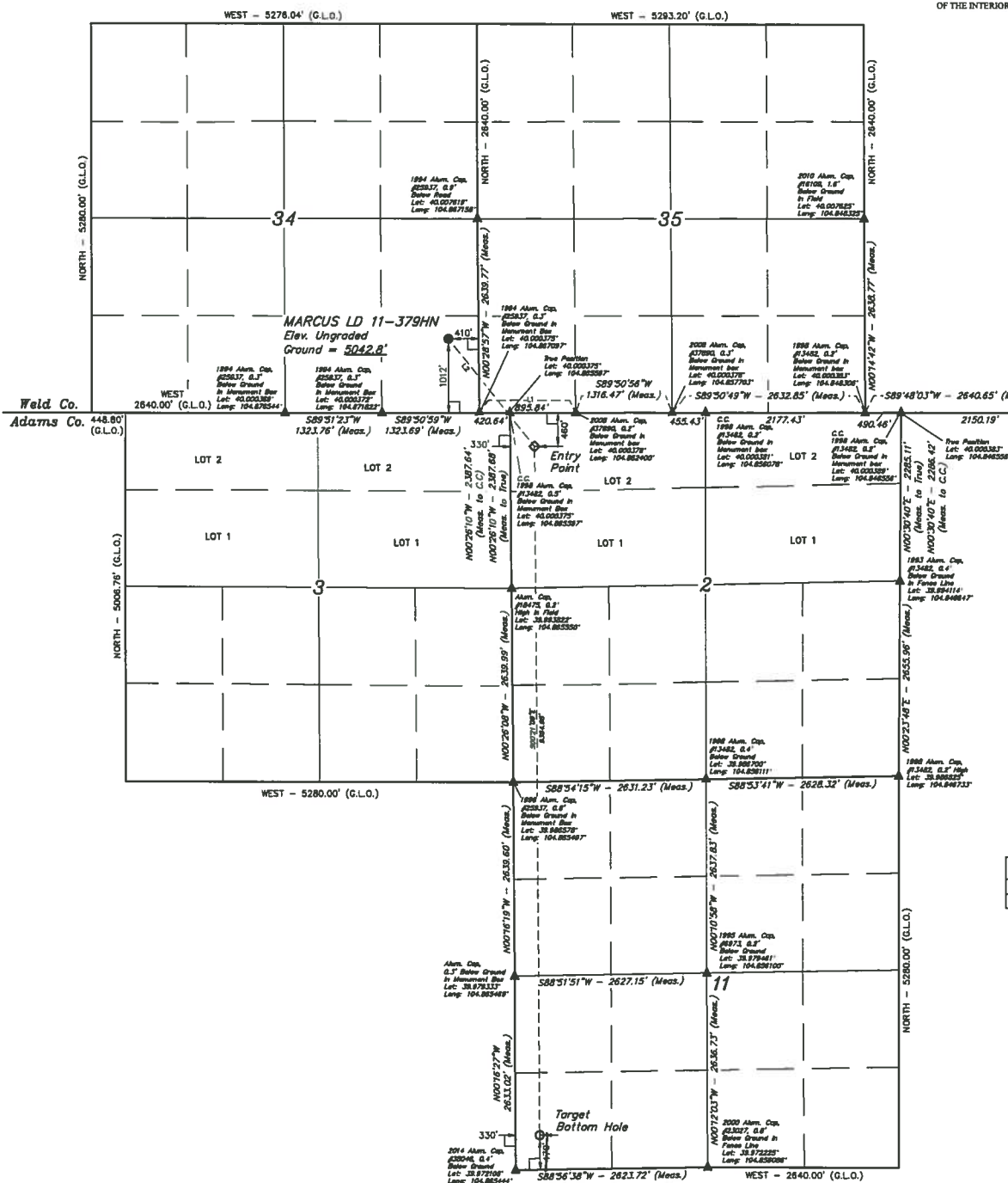
- LEGEND:**
- 6" SYMBOL
 - PROPOSED WELL HEAD
 - ENTRY POINT
 - TARGET BOTTOM HOLE
 - ▲ SECTION CORNERS LOCATED

T1N, R67W, 6th P.M.



BASIS OF BEARINGS
BASIS OF BEARINGS IS A G.P.S. OBSERVATION

BASIS OF ELEVATION
BENCHMARK IR 53 5026 LOCATED IN THE SW 1/4 SE 1/4 OF SECTION 18, T1N, R66W, 6th P.M., TAKEN FROM 1986 PUBLISHED DATUM BY THE UNITED STATES DEPARTMENT OF THE INTERIOR, GEOLOGICAL SURVEY AS BEING 5028 FEET



SECTION LINE TABLE		
LINE	DIRECTION	LENGTH
L1	S89°31'31"W	1316.44' (MEAS.)

LINE TABLE		
LINE	DIRECTION	LENGTH
L2	S38°34'34"E	1076.42'

370' FSL

THIS IS TO CERTIFY THAT THE ABOVE DESCRIBED SURVEY WAS MADE BY THE UNDERSIGNED AND THAT THE SAME ARE TRUE AND CORRECT TO THE BEST OF HIS KNOWLEDGE AND BELIEF.



GREAT WESTERN OIL & GAS COMPANY

MARCUS LD 11-379HN
SE 1/4 SE 1/4, SECTION 34, T1N, R67W, 6th P.M.
WELD COUNTY, COLORADO

PDOP = 1.4



UELS, LLC
Corporate Office: 85 South 200 East
Vernal, UT 84078 • (435) 799-1817

NAD 83 (TARGET BOTTOM HOLE)			NAD 83 (ENTRY POINT)			NAD 83 (SURFACE LOCATION)		
LATITUDE	= 39°34'34"N (199111)	LATITUDE	= 39°34'34"N (199111)	LATITUDE	= 40°07'11"N (4880135)	SURVEYED BY: JARED CHRISTOPHER, J.C.	DATE: 11-20-14	
LONGITUDE	= 104°51'31"W (10484422)	LONGITUDE	= 104°51'31"W (10484422)	LONGITUDE	= 104°51'31"W (10484422)	DRAWN BY: J.C.	DATE DRAWN: 12-01-14	
NAD 83 (TARGET BOTTOM HOLE)			NAD 83 (ENTRY POINT)			SCALE: 1" = 100'		
LATITUDE	= 39°34'34"N (199111)	LATITUDE	= 39°34'34"N (199111)	LATITUDE	= 40°07'11"N (4880135)	REVISION: 12-15-14		
LONGITUDE	= 104°51'31"W (10484422)	LONGITUDE	= 104°51'31"W (10484422)	LONGITUDE	= 104°51'31"W (10484422)	WELL LOCATION PLAN		

SURVEYED BY: JARED CHRISTOPHER, J.C. DATE: 11-20-14
DRAWN BY: J.W. DATE: 12-01-14
SCALE: 1" = 1000' REVISION: 12-15-14

WELL LOCATION PLAN