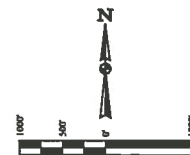


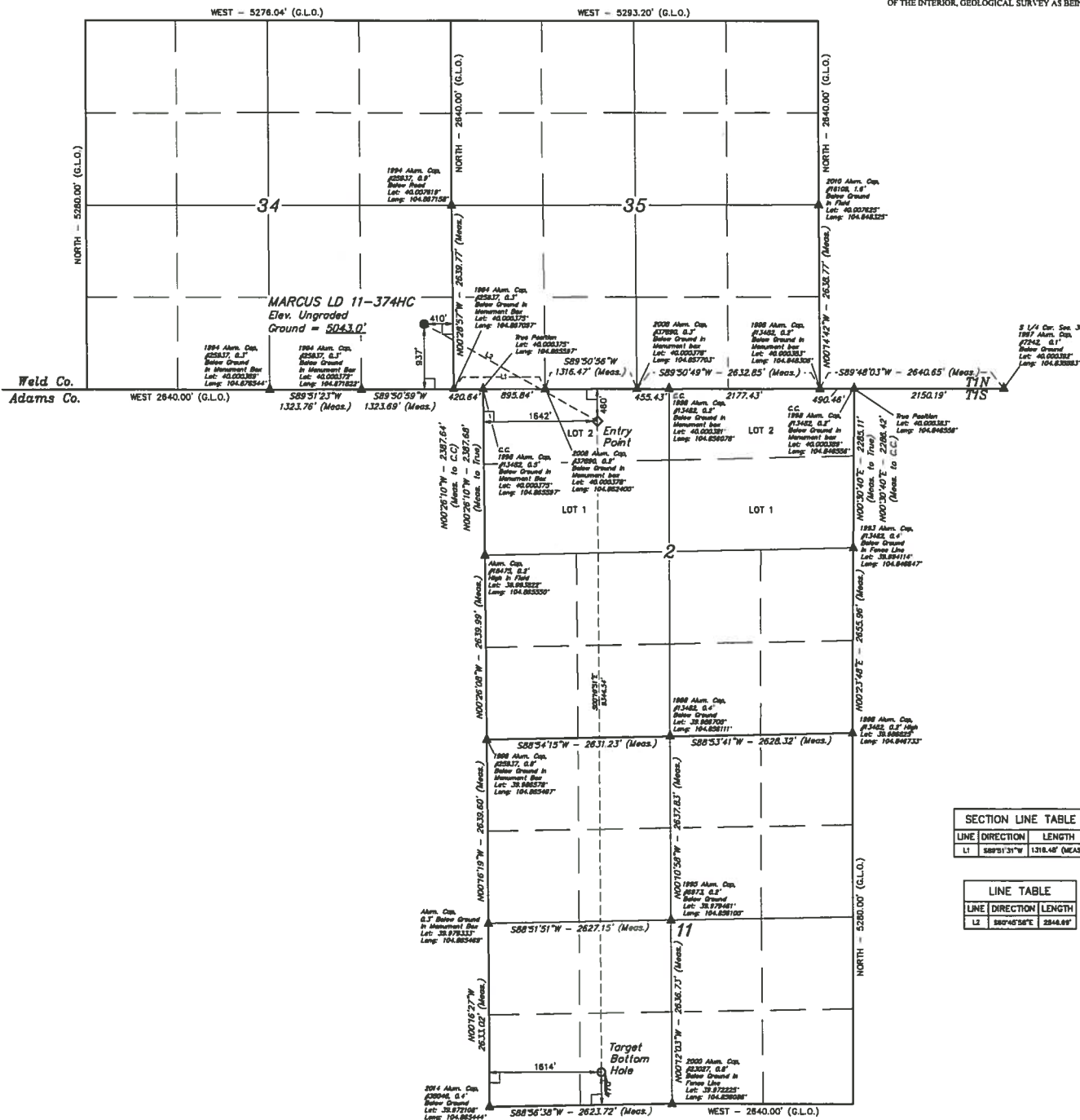
LEGEND:  
 - 90° SYMBOL  
 - PROPOSED WELL-HEAD  
 - ENTRY POINT  
 - TARGET BOTTOM HOLE  
 - SECTION CORNERS LOCATED

T1N, R67W, 6th P.M.



BASIS OF BEARINGS  
 BASIS OF ELEVATION

BENCHMARK JR 33 5026 LOCATED IN THE SW 1/4 SE 1/4 OF SECTION 18, T1N, R67W, 6th P.M., TAKEN FROM 1988 PUBLISHED DATUM BY THE UNITED STATES DEPARTMENT OF THE INTERIOR, GEOLOGICAL SURVEY AS BEING 5028 FEET



SECTION LINE TABLE		
LINE	DIRECTION	LENGTH
L1	S89°51'31"W	1318.48' (MEAS.)

LINE TABLE		
LINE	DIRECTION	LENGTH
L2	S89°46'58"E	2844.84'

THIS IS TO CERTIFY THAT THE ABOVE IS A TRUE AND CORRECT COPY OF THE ORIGINAL SURVEY MAP AND THAT THE SAME HAS BEEN RECORDED IN THE PUBLIC RECORDS OF THE STATE OF UTAH.

JARED CHRISTOPHER, J.C.  
 REGISTERED LAND SURVEYOR  
 LICENSE NO. 32723  
 STATE OF UTAH

GREAT WESTERN OIL & GAS COMPANY

MARCUS LD 11-374HC  
 SE 1/4 SE 1/4, SECTION 34, T1N, R67W, 6th P.M.  
 WELD COUNTY, COLORADO



UELS, LLC  
 Corporate Office \* 82 South 200 East  
 Vernal, UT 84078 \* (435) 789-1817

PDOP = 1.4

NAD 83 (TARGET BOTTOM HOLE)	NAD 83 (ENTRY POINT)	NAD 83 (SURFACE LOCATION)
LATITUDE = 39°12'44.49" (N 915444)	LATITUDE = 39°12'44.49" (N 915444)	LATITUDE = 39°12'44.49" (N 915444)
LONGITUDE = 104°51'34.89" (W 849923)	LONGITUDE = 104°51'34.89" (W 849923)	LONGITUDE = 104°51'34.89" (W 849923)
NAD 83 (TARGET BOTTOM HOLE)	NAD 83 (ENTRY POINT)	NAD 83 (SURFACE LOCATION)
LATITUDE = 39°12'44.55" (N 915444)	LATITUDE = 39°12'44.55" (N 915444)	LATITUDE = 39°12'44.55" (N 915444)
LONGITUDE = 104°51'32.86" (W 849911)	LONGITUDE = 104°51'32.86" (W 849911)	LONGITUDE = 104°51'32.86" (W 849911)

WELL LOCATION PLAN