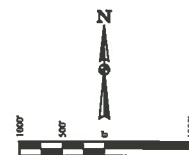
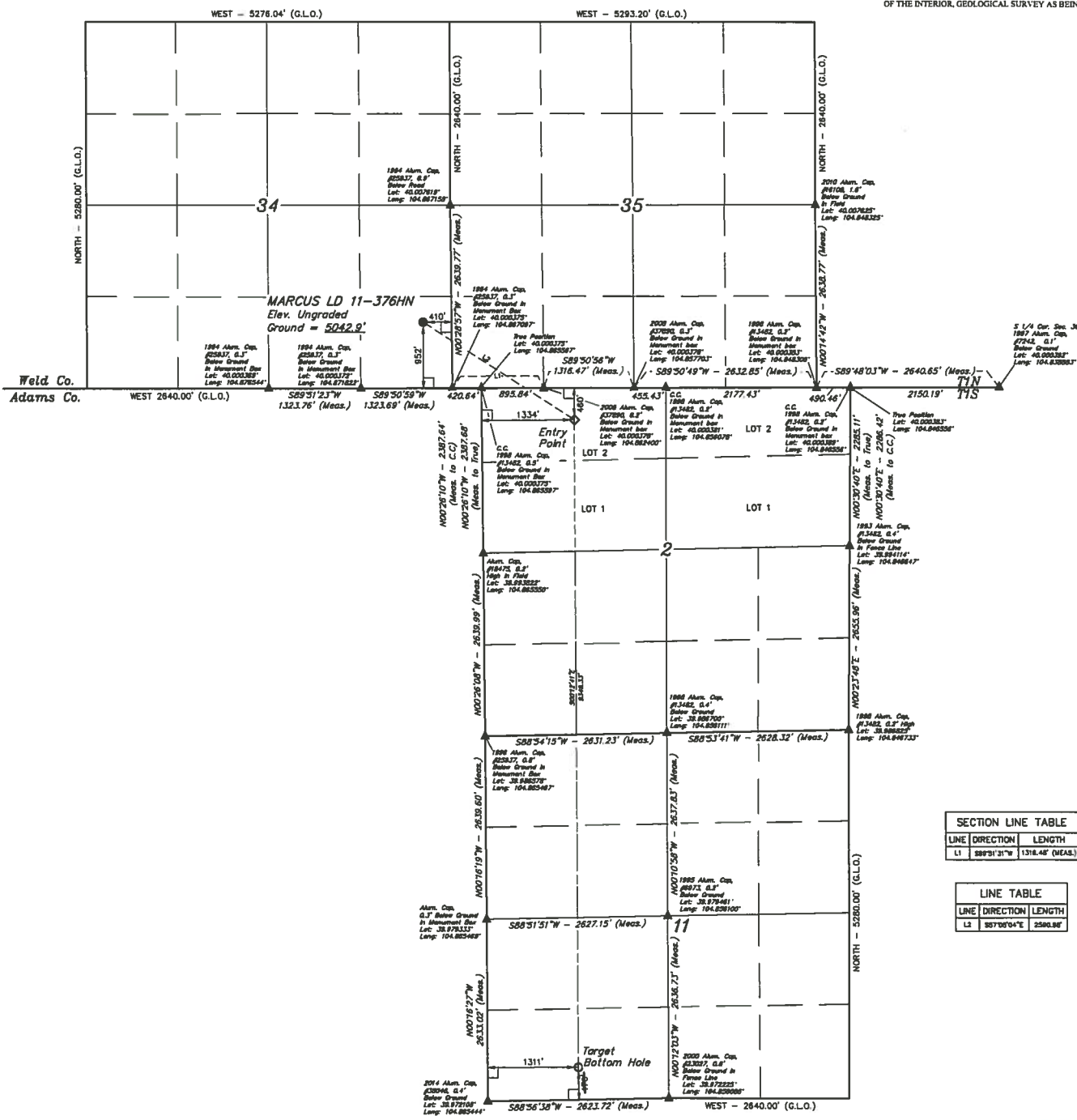


LEGEND:
 - 90° SYMBOL
 - PROPOSED WELLHEAD
 - ENTRY POINT
 - TARGET BOTTOM HOLE
 - SECTION CORNERS LOCATED

T1N, R67W, 6th P.M.



BASIS OF BEARINGS
 BASIS OF ELEVATION
 BENCHMARK JR 53 5026 LOCATED IN THE SW 1/4 SE 1/4 OF SECTION 18, T14N, R64W, 6th P.M., TAKEN FROM 1985 PUBLISHED DATUM BY THE UNITED STATES DEPARTMENT OF THE INTERIOR, GEOLOGICAL SURVEY AS BEING 5028 FEET



SECTION LINE TABLE		
LINE	DIRECTION	LENGTH
L1	S89°31'31"W	1316.48' (MEAS.)

LINE TABLE		
LINE	DIRECTION	LENGTH
L2	S87°00'04"E	2580.86'

THIS IS TO CERTIFY THAT THE ABOVE IS A TRUE AND CORRECT COPY OF THE ORIGINAL SURVEY MAP AND THAT THE SAME HAS BEEN FILED FOR RECORD IN THE PUBLIC RECORDS OF THE STATE OF COLORADO.
 JARED CHRISTOPHER, J.C.
 LAND SURVEYOR
 LICENSE NO. 22293
 STATE OF COLORADO

GREAT WESTERN OIL & GAS COMPANY
 MARCUS LD 11-376HN
 SE 1/4 SE 1/4, SECTION 34, T1N, R67W, 6th P.M.
 WELD COUNTY, COLORADO

UELS, LLC
 Corporate Office: 45 South 200 East
 Vernal, UT 84079 • (435) 799-1817

SURVEYED BY: JARED CHRISTOPHER, J.C. DATE: 11-20-14
 DRAWN BY: J.W. DATE DRAWN: 12-01-14
 SCALE: 1" = 1000' REVISION: 00-00-00
 WELL LOCATION PLAN

NAD 83 (TARGET BOTTOM HOLE)	NAD 83 (ENTRY POINT)	NAD 83 (SURFACE LOCATION)
LATITUDE = 39°42'24.42" (N 97456)	LATITUDE = 39°59'54.81" (N 999114)	LATITUDE = 40°00'18.75" (N 1002946)
LONGITUDE = 104°51'58.71" (W 104 86272)	LONGITUDE = 104°51'18.91" (W 104 86421)	LONGITUDE = 104°51'58.96" (W 104 86413)
NAD 83 (TARGET BOTTOM HOLE)	NAD 83 (ENTRY POINT)	NAD 83 (SURFACE LOCATION)
LATITUDE = 39°42'24.30" (N 97472)	LATITUDE = 39°59'54.87" (N 999111)	LATITUDE = 40°00'18.81" (N 1003000)
LONGITUDE = 104°51'58.87" (W 104 86243)	LONGITUDE = 104°51'19.07" (W 104 86497)	LONGITUDE = 104°51'58.96" (W 104 86493)

PDOP = 1.4