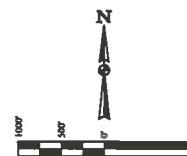


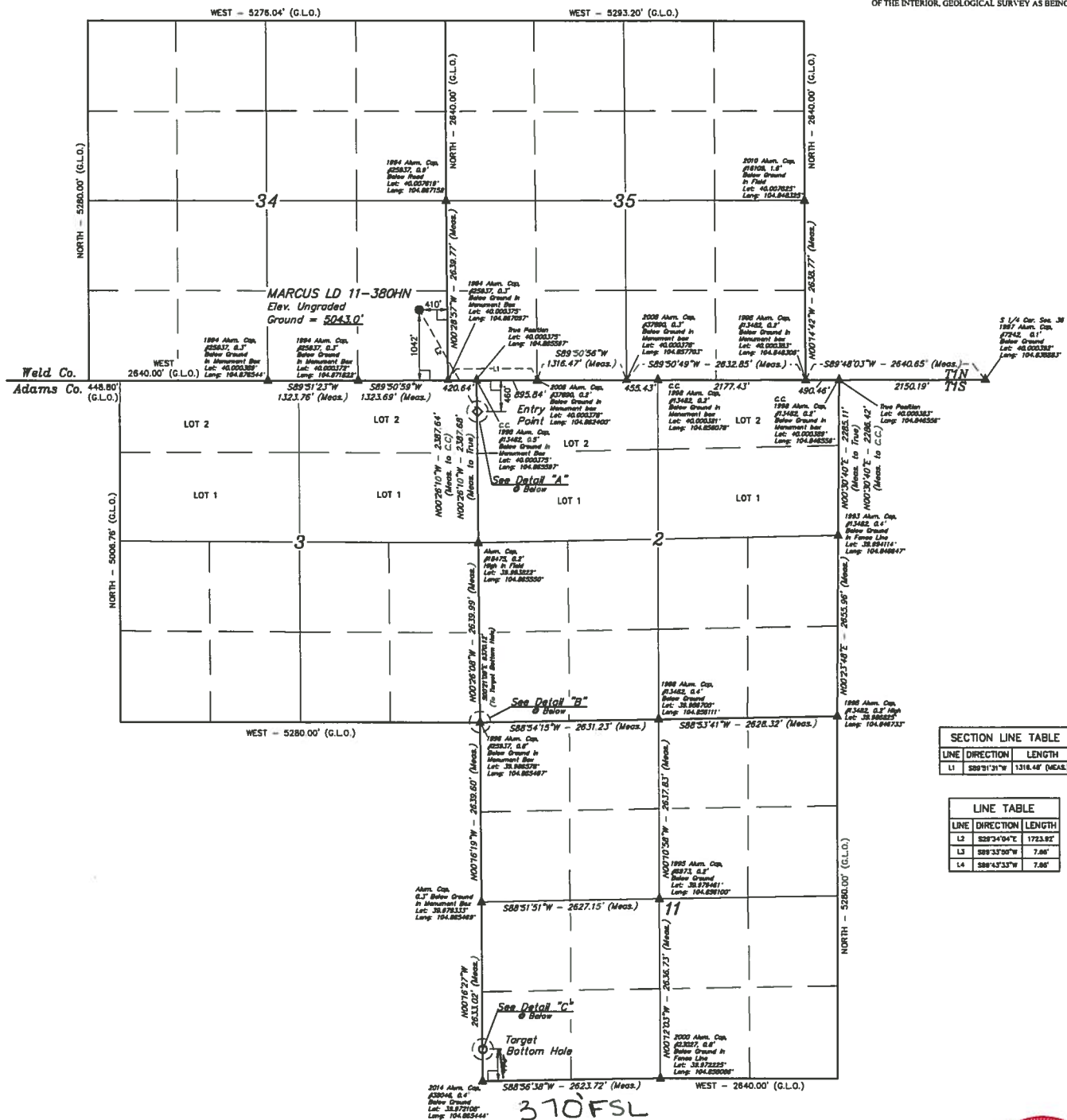
LEGEND:  
 - 60' SYMBOL  
 - PROPOSED WELL-HEAD  
 - ENTRY POINT  
 - TARGET BOTTOM HOLE  
 - SECTION CORNERS LOCATED

T1N, R67W, 6th P.M.



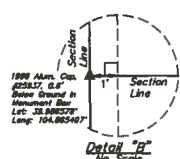
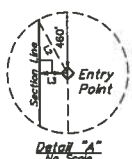
BASIS OF BEARINGS  
 BASIS OF ELEVATION

BENCHMARK IR 33 5056 LOCATED IN THE SW 1/4 SE 1/4 OF SECTION 18, T1N, R67W, 6th P.M., TAKEN FROM 1988 PUBLISHED DATUM BY THE UNITED STATES DEPARTMENT OF THE INTERIOR, GEOLOGICAL SURVEY AS BEING 5028 FEET



SECTION LINE TABLE		
LINE	DIRECTION	LENGTH
L1	S89°31'31"W	1316.48' (MEAS.)

LINE TABLE		
LINE	DIRECTION	LENGTH
L2	S28°34'34"E	1723.82'
L3	S89°33'30"W	7.88'
L4	S89°43'33"W	7.88'



CERTIFICATE OF RECORDING  
 THIS IS TO CERTIFY THAT THE ABOVE NOTED ACTUAL SURVEY MADE BY J.W. AND THAT THE SAME ARE TRUE AND KNOWN TO BE TRUE BY THE SIGNATURE AND SEAL OF THE STATE OF COLORADO

GREAT WESTERN OIL & GAS COMPANY  
 MARCUS LD 11-3801N  
 SE 1/4 SE 1/4, SECTION 34, T1N, R67W, 6th P.M.  
 WELD COUNTY, COLORADO

UJELS, LLC  
 Corporate Office • 85 South 280 East  
 Vernal, UT 84778 • (435) 789-1917

SURVEYED BY JARED CHRISTOPHER, J.C. DATE 11-20-14  
 DRAWN BY J.W. DATE 12-01-14  
 SCALE: 1" = 100' REVISED: 00-00-00

NAD 83 (TARGET BOTTOM HOLE)	NAD 83 (ENTRY POINT)	NAD 83 (SURFACE LOCATION)
LATITUDE = 39°12'33.33" N (194.86422)	LATITUDE = 39°12'33.33" N (194.86422)	LATITUDE = 39°12'33.33" N (194.86422)
LONGITUDE = 104°13'53.81" W (104.86497)	LONGITUDE = 104°13'53.81" W (104.86497)	LONGITUDE = 104°13'53.81" W (104.86497)

PDOP = 1.3