

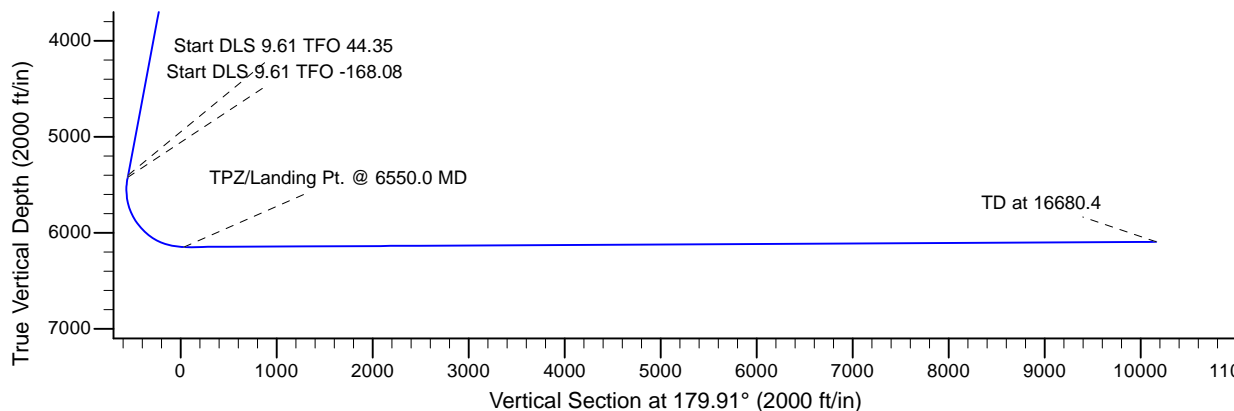
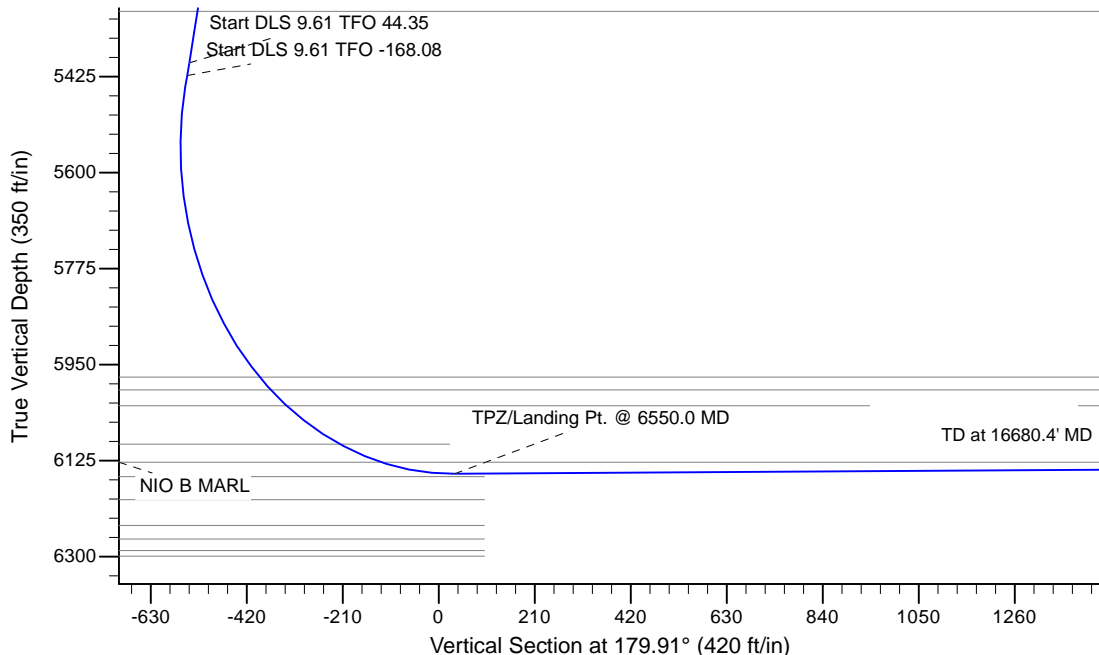
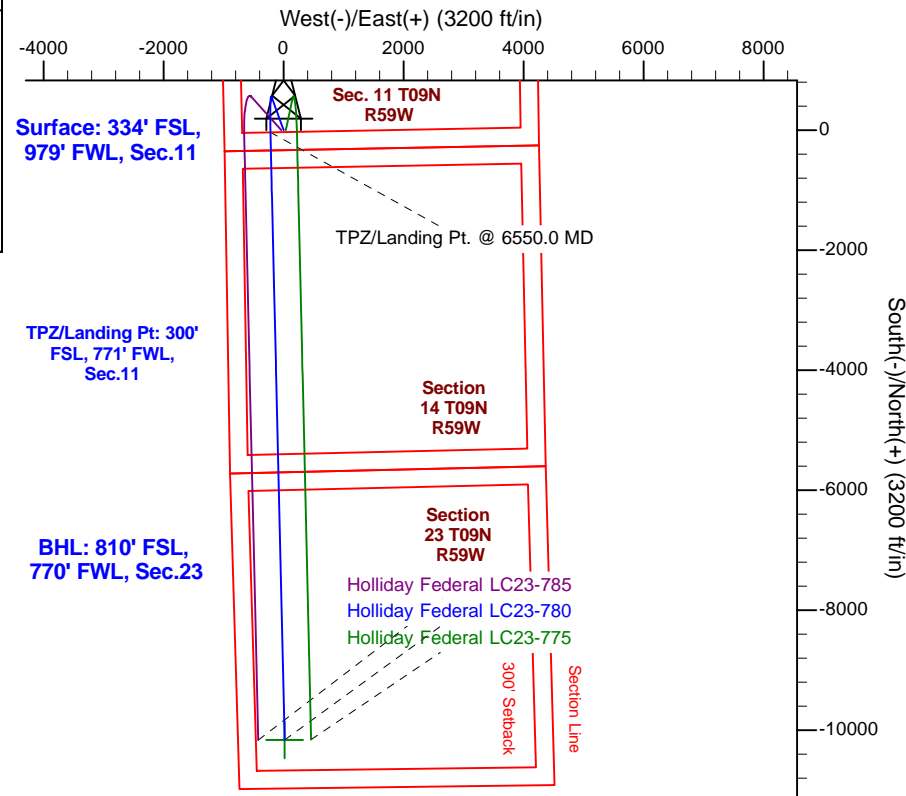
Project: Wattenberg Field
 Site: LC (Sec.12-T09N-R59W) Weld County, CO
 Well: Holliday Federal LC23-780
 Wellbore: Original Drilling
 Design: APD - Rev 2

Northern Region Drilling - Working

Geodetic System: US State Plane 1983
 Datum: North American Datum 1983
 Ellipsoid: GRS 1980
 Zone: Colorado Northern Zone
 System Datum: Mean Sea Level

SECTION DETAILS

Sec	MD	Inc	Azi	TVD	+N/-S	+E/-W	Dleg	TFace	VSec	Target
1	0.0	0.00	0.00	0.0	0.0	0.0	0.00	0.00	0.0	
2	2200.0	0.00	0.00	2200.0	0.0	0.0	0.00	0.00	0.0	
3	2762.5	11.25	340.00	2758.9	51.7	-18.8	2.00	340.00	-51.8	
4	5455.3	11.25	340.00	5400.0	545.4	-198.5	0.00	0.00	-545.7	
5	5478.8	12.96	347.05	5423.0	550.1	-199.9	9.61	44.35	-550.4	
6	6550.0	90.30	178.66	6149.0	-35.0	-220.0	9.61	-168.08	34.6	
7	16680.4	90.30	178.66	6095.8	-10162.5	16.7	0.00	45.47	10162.5	Holliday Federal LC23-780 BHL 810'FSL, 770'FWL



T G M

Azimuths to Grid North
 True North: -1.00°
 Magnetic North: 7.60°

Magnetic Field
 Strength: 53574.1snT
 Dip Angle: 67.53°
 Date: 12/31/2009
 Model: IGRF200510

WELL DETAILS: Holliday Federal LC23-780					
Ground Level: 4977.0					
	Northing	Easting	Latitude	Longitude	
0.0	0.0	1523150.37	3429035.86	40.759150	-103.951250
Plan: APD - Rev 2 (Holliday Federal LC23-780/Original Drilling)					
Created By: Shailey Jewell			Date: 13:41, August 01 2016		
<p>OK to submit with 2A as per Noble Drilling</p> <p>8/1/2016 1:44</p>					