



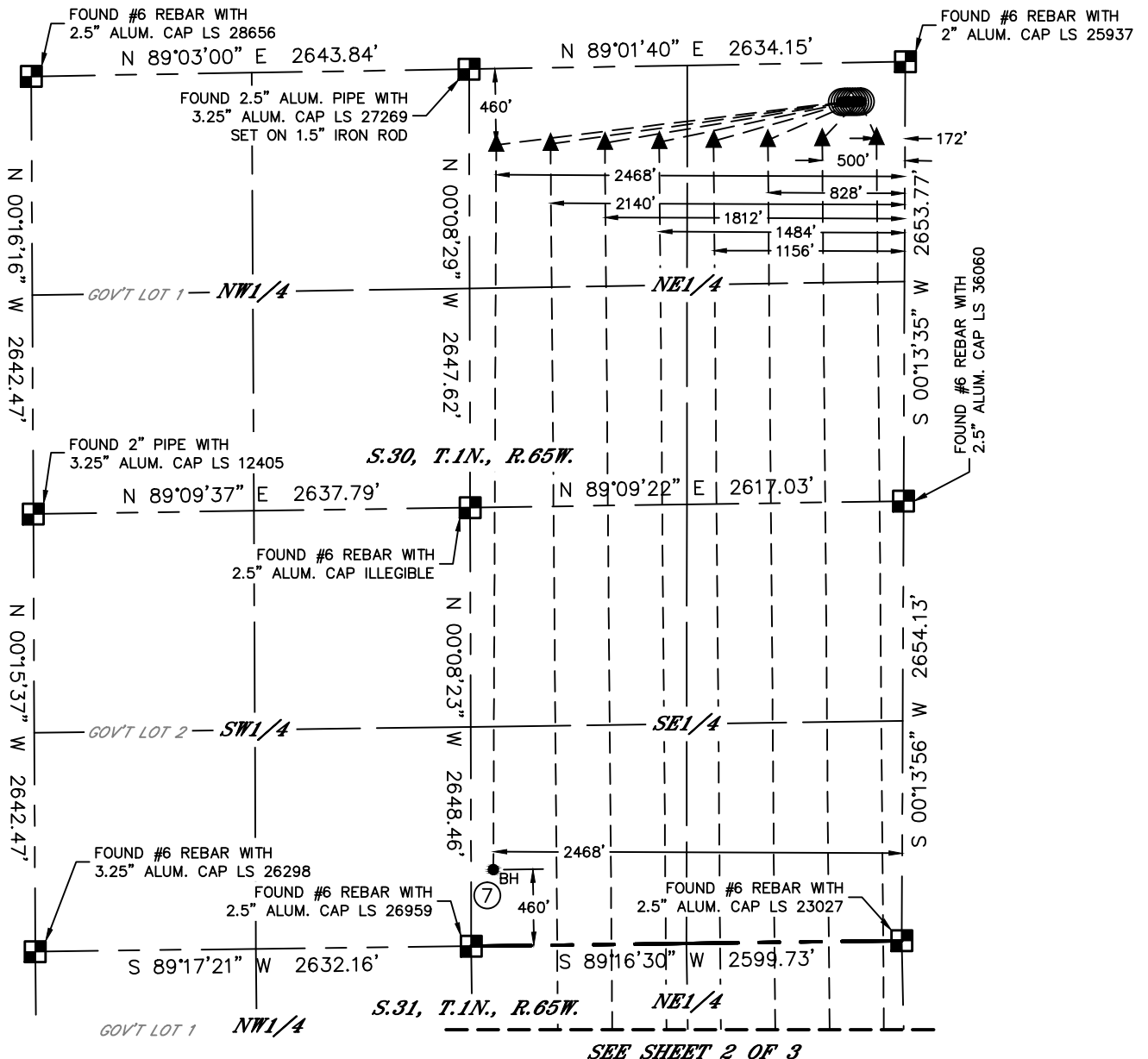
Lat40°, Inc. 6250 W. 10th Street, Unit 2, Greeley, CO 970-515-5294

MULTI-WELL PLAN

LEHL HZ PAD

SECTION: 30
TOWNSHIP: 1N
RANGE: 65W
6TH. P.M.
WELD COUNTY, CO

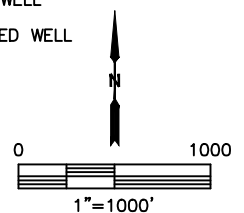
THIS MAP DOES NOT REPRESENT A BOUNDARY SURVEY



LEGEND

- = ALIQUOT MONUMENT AS DESCRIBED
- = CALCULATED POSITION
- = SURFACE HOLE LOCATION (SHL)
- ▲ = ENTRY POINT LOCATION (EP)
- _{BH} = BOTTOM HOLE LOCATION (BHL)
- ⊙ = EXISTING WELL
- ⊙ = ABANDONED WELL

#	WELL NAME	BHL FOOTAGE	BHL LAT °	BHL LONG °	BHL S-T.
1	LEHL 30-1	460 FSL 500 FEL	40.00179	-104.69906	31-1-65
2	LEHL 30-2	460 FSL 828 FEL	40.00179	-104.70023	31-1-65
3	LEHL 30-3	460 FSL 1156 FEL	40.00179	-104.70141	31-1-65
4	LEHL 30-4	460 FSL 1484 FEL	40.00179	-104.70258	31-1-65
5	LEHL 30-5	460 FSL 1812 FEL	40.00179	-104.70375	31-1-65
6	LEHL 30-6	460 FSL 2140 FEL	40.00179	-104.70492	31-1-65
7	LEHL 30-7	460 FSL 2468 FEL	40.01632	-104.70627	30-1-65
8	LEHL 30-8	460 FSL 172 FEL	40.00179	-104.69789	31-1-65



SHEET 1 OF 3

DATE: 7/13/2016
PROJECT#: 2016050



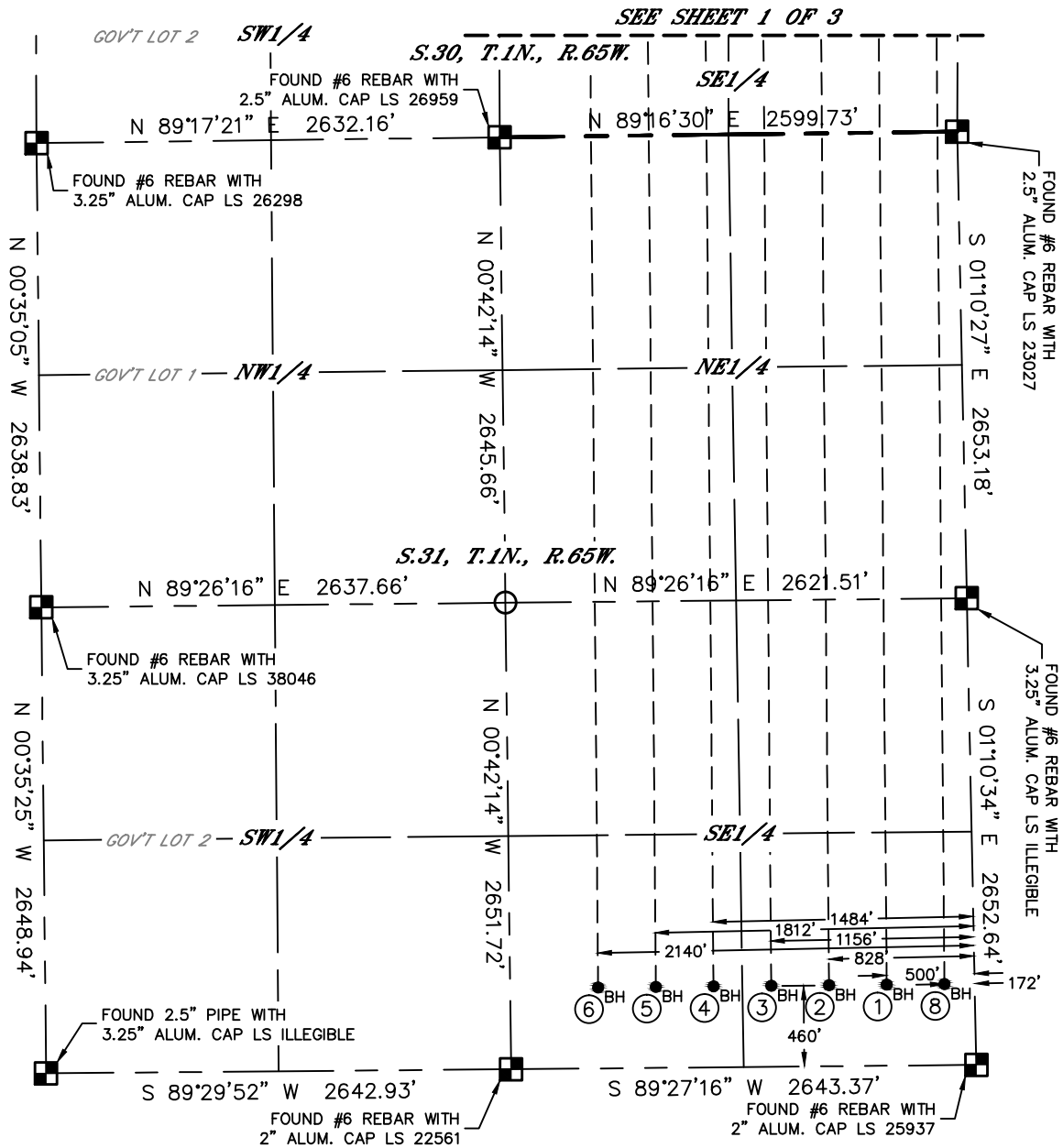
Lat40°, Inc. 6250 W. 10th Street, Unit 2, Greeley, CO 970-515-5294

MULTI-WELL PLAN

LEHL HZ PAD

SECTION: 30
TOWNSHIP: 1N
RANGE: 65W
6TH. P.M.
WELD COUNTY, CO

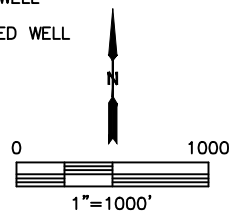
THIS MAP DOES NOT REPRESENT A BOUNDARY SURVEY



LEGEND

- = ALIQUOT MONUMENT AS DESCRIBED
- = CALCULATED POSITION
- = SURFACE HOLE LOCATION (SHL)
- ▲ = ENTRY POINT LOCATION (EP)
- = BOTTOM HOLE LOCATION (BHL)
- ⊙ = EXISTING WELL
- ⊙ = ABANDONED WELL

#	WELL NAME	BHL FOOTAGE	BHL LAT°	BHL LONG°	BHL S-T
1	LEHL 30-1	460 FSL 500 FEL	40.00179	-104.69906	31-1-65
2	LEHL 30-2	460 FSL 828 FEL	40.00179	-104.70023	31-1-65
3	LEHL 30-3	460 FSL 1156 FEL	40.00179	-104.70141	31-1-65
4	LEHL 30-4	460 FSL 1484 FEL	40.00179	-104.70258	31-1-65
5	LEHL 30-5	460 FSL 1812 FEL	40.00179	-104.70375	31-1-65
6	LEHL 30-6	460 FSL 2140 FEL	40.00179	-104.70492	31-1-65
7	LEHL 30-7	460 FSL 2468 FEL	40.01632	-104.70627	30-1-65
8	LEHL 30-8	460 FSL 172 FEL	40.00179	-104.69789	31-1-65



SHEET 2 OF 3

DATE: 7/13/2016
PROJECT#: 2016050



Lat40°, Inc. 6250 W. 10th Street, Unit 2, Greeley, CO 970-515-5294

MULTI-WELL PLAN

LEHL HZ PAD

SECTION: 30
TOWNSHIP: 1N
RANGE: 65W
6TH. P.M.
WELD COUNTY, CO

