



July 11, 2016

VIA ELECTRONIC TRANSMITTAL

Director Matt Lepore  
Colorado Oil and Gas Conservation Commission  
1120 Lincoln Street Suite 801  
Denver, Colorado 80203

RE: Rule 318.A.e. for the Lehl 30-8 HZ well,

Surface Location: NENE, Section 30, Township 1 North, Range 65 West, Weld County, CO

Dear Mr. Lepore,

HRM Resources II, LLC (HRM) is planning to drill the captioned horizontal well in accordance with the provision of COGCC Rule 318A.e.

The proposed wellbore spacing unit consists of:

Sections 30 & 31-T1N-R65W: E/2 E/2 & Sections 29 & 32-T1N-R65W: W/2 W/2.

The spacing unit is a 640-acre wellbore spacing unit for the Niobrara formation.

HRM hereby certifies to the Director that all Owners within the proposed spacing unit above were notified and 30 days have passed without objection.

If you have any questions or issues regarding this permit, please contact Paul Gottlob at 720-420-5747.

Respectfully,

Paul Gottlob  
Integrated Petroleum Technologies, Inc.  
Agent for HRM Resources II, LLC

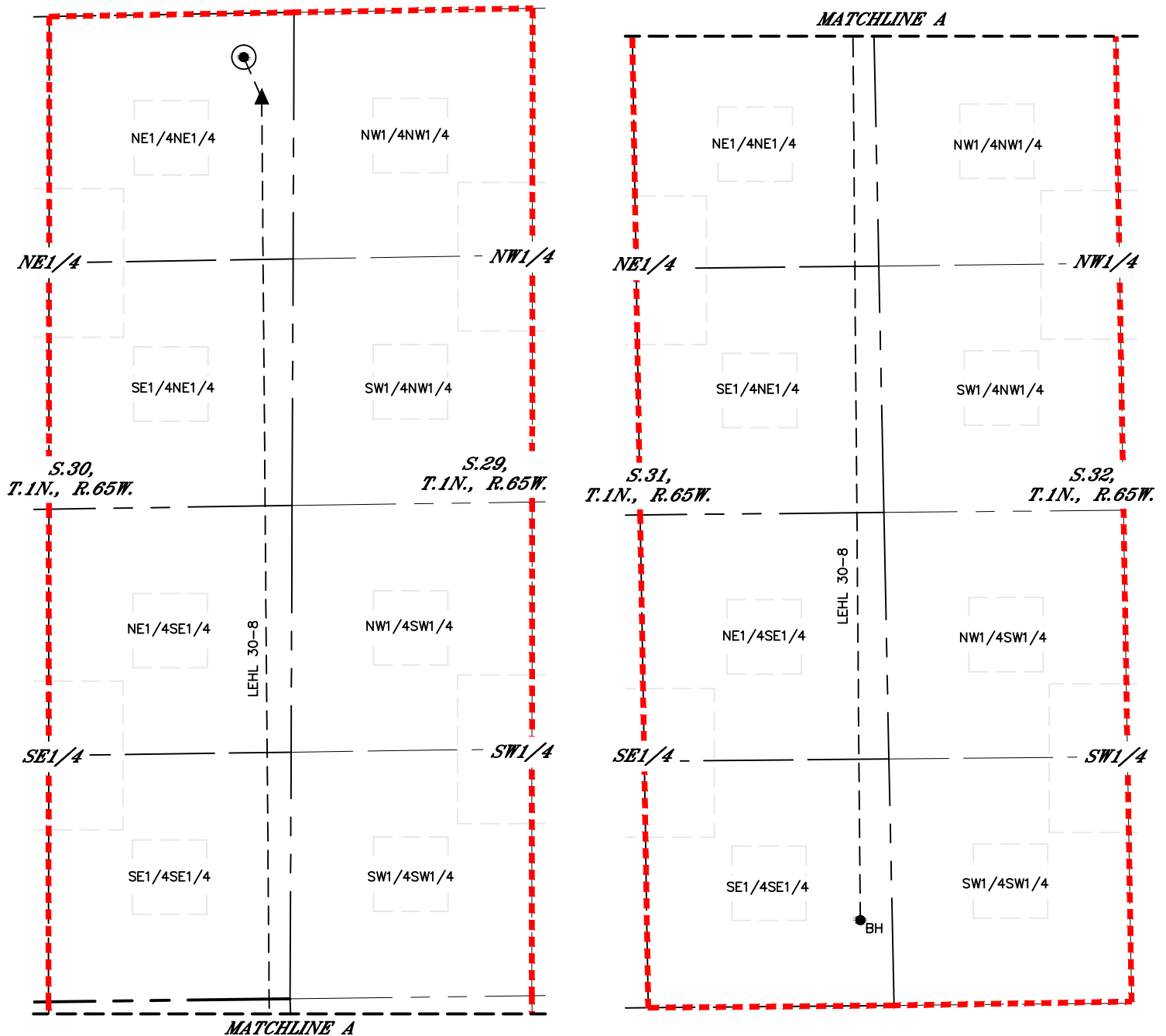


Lat40°, Inc. 6250 W. 10th Street, Unit 2, Greeley, CO 970-515-5294

# SPACING UNIT BUFFER MAP

LEHL 30-8

SECTION: 30  
TOWNSHIP: 1N  
RANGE: 65W  
6TH. P.M.  
WELD COUNTY, CO



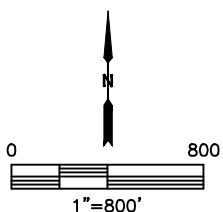
## LEGEND

● = SURFACE HOLE LOCATION (SHL)

▲ = ENTRY POINT LOCATION (EP)

●<sub>BH</sub> = BOTTOM HOLE LOCATION (BHL)

--- = PROPOSED SPACING UNIT



DATE: 5/25/2016  
PROJECT#: 2016050