

HRM Resources

Location	DJ Basin	Slot	Slot 3
Field	WATTENBERG	Well	Lehl 30-3
Installation	Lehl Pad - Rev 2 - 2016-07-15	Wellbore	Lehl 30-3 (PWB)

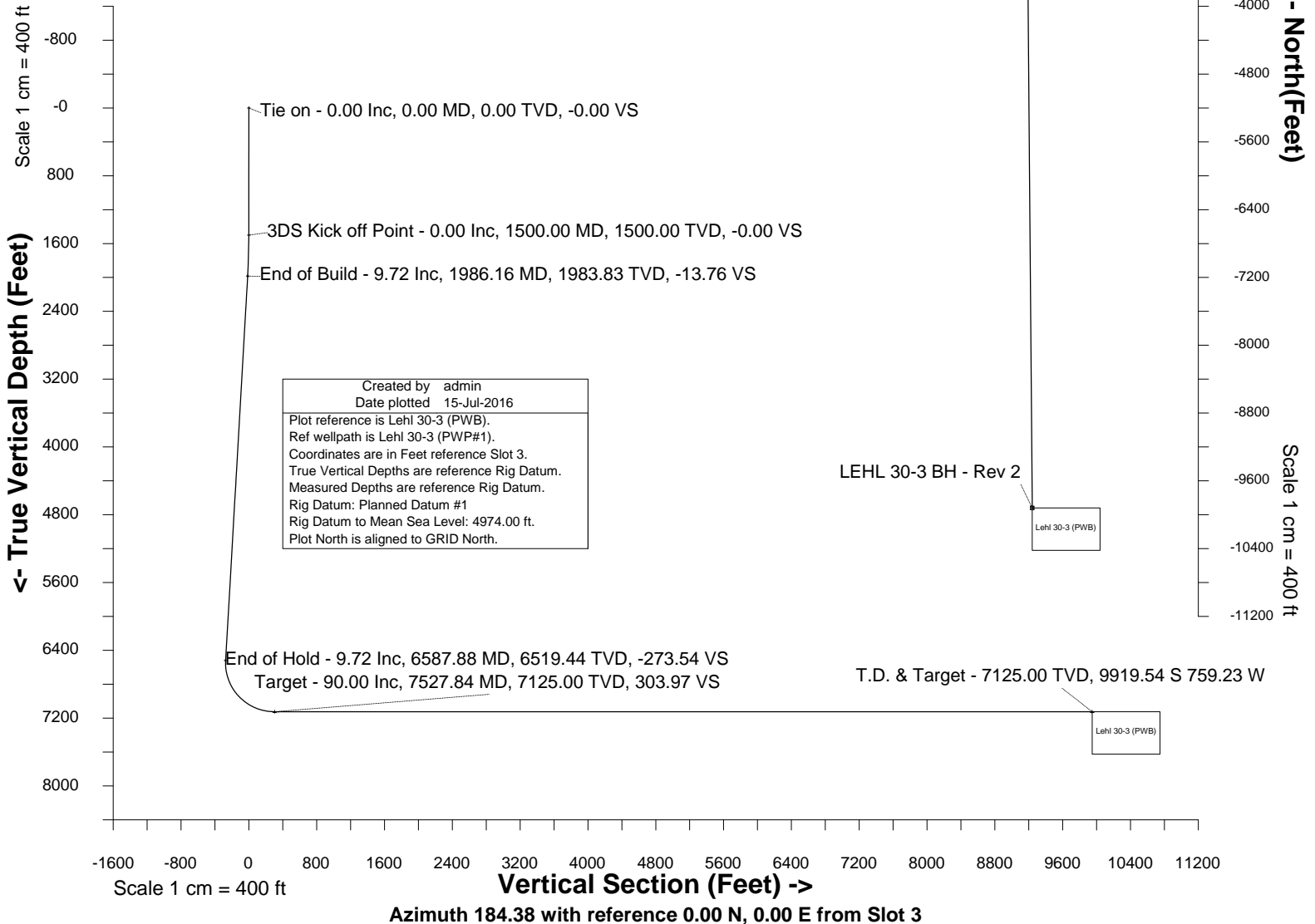
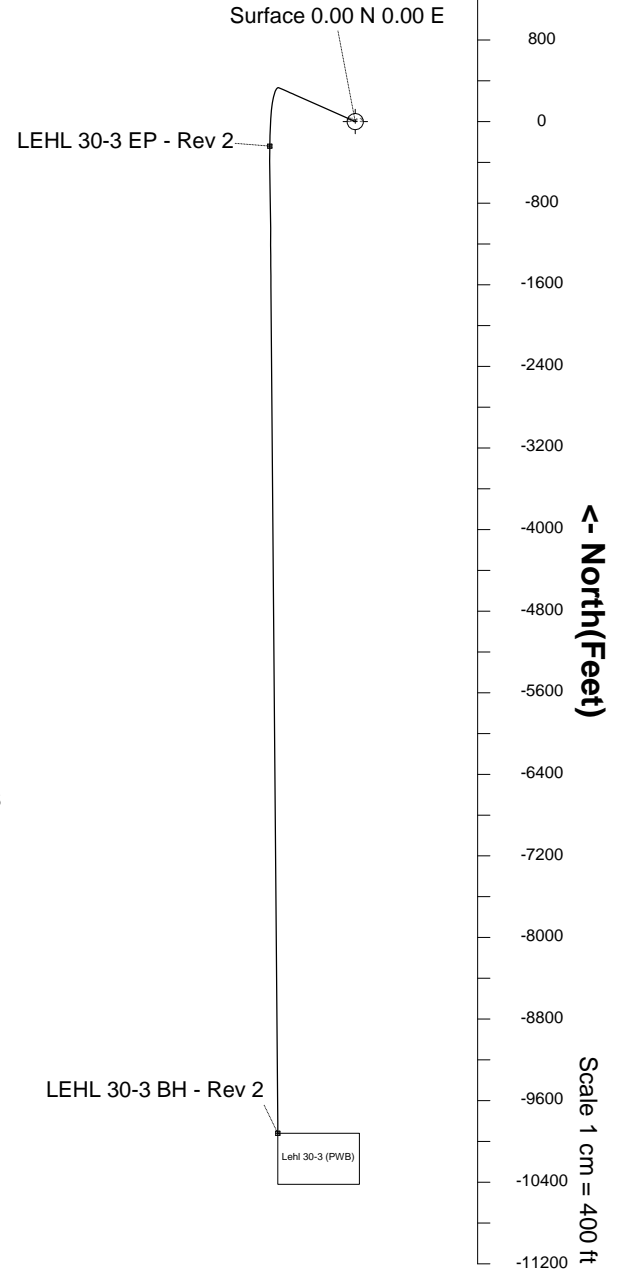
Scale 1 cm = 400 ft

East (Feet) ->

-1600 -800 0 800

WELL PROFILE DATA

Point	MD	Inc	Azi	TVD	North	East	deg/100ft	V. Sect
Tie on	0.00	0.00	0.00	0.00	S 0.00	W 0.00		-0.00
KOP	1500.00	0.00	293.90	1500.00	S 0.00	W 0.00	0.00	-0.00
End of Build	1986.16	9.72	293.90	1983.83	N 16.68	W 37.62	2.00	-13.76
End of Hold	6587.88	9.72	293.90	6519.44	N 331.60	W 748.14	0.00	-273.54
Target LEHL 3... Rev 2	7527.84	90.00	179.53	7125.00	S 240.72	W 838.00	10.00	303.97
T.D. & Target LEH...v 2	17206.98	90.00	179.53	7125.00	S 9919.54	W 759.23	0.00	9948.55





SYS DRILL
Well Design Combined Report
Wellbore: Lehl 30-3 (PWB)



Wellhead Details

Name	Latitude	Longitude	Northing	Easting	North	East	Slot Elevation Above Ground
Slot 3	40.02900000	-104.69838000	1254425.4348	3224478.1659	51.01N	5715.44E	0.00

Declination

Date	Source	Time
Jun-9-2016	EMM-2015 [2000.0-2020.0]	15:46

Installation Details

Name	Installation Position (Latitude)	Installation Position (Longitude)	Northing	Easting	Coord System Name	North Alignment
Lehl Pad - Rev 2 - 2016-07-15	40.02900000	-104.71878983	1254374.4255	3218762.9369	CO83-NF on NORTH AMERICAN DATUM 1983 datum	Grid

Summary Wellpath

MD[ft]	Inc[deg]	Azi[deg]	TVD[ft]	North[ft]	East[ft]	Dogleg [deg/100ft]	Vertical Section[ft]	Northing	Easting
0.00	0.00	0.000	0.00	0.00N	0.00E		0.00	1254425.43	3224478.17
1500.00	0.00	293.900	1500.00	0.00N	0.00E	==>	0.00	1254425.43	3224478.17
1986.16	9.72	293.900	1983.83	16.68N	37.62W	2.00	-13.76	1254442.11	3224440.54
6587.88	9.72	293.900	6519.44	331.60N	748.14W	==>	-273.54	1254757.02	3223730.06
7527.84	90.00	179.530	7125.00	240.72S	838.00W	10.00	303.97	1254184.73	3223640.20
17206.98	90.00	179.530	7125.00	9919.54S	759.23W	==>	9948.55	1244506.27	3223718.96

Interpolated Wellpath

MD[ft]	Inc[deg]	Azi[deg]	TVD[ft]	North[ft]	East[ft]	Dogleg [deg/100ft]	Vertical Section[ft]	All Station Comments
0.00	0.00	0.000	0.00	0.00N	0.00E		0.00	Slot Datum
100.00	0.00	0.000	100.00	0.00N	0.00E	==>	0.00	
200.00	0.00	0.000	200.00	0.00N	0.00E	==>	0.00	
300.00	0.00	0.000	300.00	0.00N	0.00E	==>	0.00	
400.00	0.00	0.000	400.00	0.00N	0.00E	==>	0.00	
500.00	0.00	0.000	500.00	0.00N	0.00E	==>	0.00	
600.00	0.00	0.000	600.00	0.00N	0.00E	==>	0.00	
700.00	0.00	0.000	700.00	0.00N	0.00E	==>	0.00	
800.00	0.00	0.000	800.00	0.00N	0.00E	==>	0.00	
900.00	0.00	0.000	900.00	0.00N	0.00E	==>	0.00	
1000.00	0.00	0.000	1000.00	0.00N	0.00E	==>	0.00	
1100.00	0.00	0.000	1100.00	0.00N	0.00E	==>	0.00	
1200.00	0.00	0.000	1200.00	0.00N	0.00E	==>	0.00	
1300.00	0.00	0.000	1300.00	0.00N	0.00E	==>	0.00	
1400.00	0.00	0.000	1400.00	0.00N	0.00E	==>	0.00	
1500.00	0.00	293.900	1500.00	0.00N	0.00E	==>	0.00	
1600.00	2.00	293.900	1599.98	0.71N	1.60W	2.00	-0.58	
1700.00	4.00	293.900	1699.84	2.83N	6.38W	2.00	-2.33	
1800.00	6.00	293.900	1799.45	6.36N	14.35W	2.00	-5.25	
1900.00	8.00	293.900	1898.70	11.30N	25.49W	2.00	-9.32	
2000.00	9.72	293.900	1997.47	17.62N	39.76W	==>	-14.54	
2100.00	9.72	293.900	2096.03	24.47N	55.20W	==>	-20.18	
2200.00	9.72	293.900	2194.60	31.31N	70.64W	==>	-25.83	
2300.00	9.72	293.900	2293.16	38.15N	86.08W	==>	-31.47	
2400.00	9.72	293.900	2391.73	45.00N	101.52W	==>	-37.12	
2500.00	9.72	293.900	2490.29	51.84N	116.96W	==>	-42.76	
2600.00	9.72	293.900	2588.85	58.68N	132.40W	==>	-48.41	
2700.00	9.72	293.900	2687.42	65.53N	147.84W	==>	-54.05	
2800.00	9.72	293.900	2785.98	72.37N	163.28W	==>	-59.70	
2900.00	9.72	293.900	2884.54	79.22N	178.72W	==>	-65.34	
3000.00	9.72	293.900	2983.11	86.06N	194.16W	==>	-70.99	
3100.00	9.72	293.900	3081.67	92.90N	209.60W	==>	-76.64	
3200.00	9.72	293.900	3180.23	99.75N	225.04W	==>	-82.28	

All data is in Feet unless otherwise stated
Coordinates are from Slot MD's are from Rig and TVD's are from Rig (Planned Datum #1 4974.0ft above Mean Sea Level)
Vertical Section is from 0.00N 0.00E on azimuth 184.380 degrees
Bottom hole distance is 9948.55 Feet on azimuth 184.38 degrees from Wellhead
Calculation method uses Minimum Curvature method
Prepared by IPT
Date Printed: 15-Jul-2016



SYSDRILL
Well Design Combined Report
Wellbore: Lehl 30-3 (PWB)



Interpolated Wellpath								
MD[ft]	Inc[deg]	Azi[deg]	TVD[ft]	North[ft]	East[ft]	Dogleg [deg/100ft]	Vertical Section[ft]	All Station Comments
3300.00	9.72	293.900	3278.80	106.59N	240.48W	==>	-87.93	
3400.00	9.72	293.900	3377.36	113.43N	255.92W	==>	-93.57	
3500.00	9.72	293.900	3475.92	120.28N	271.36W	==>	-99.22	
3600.00	9.72	293.900	3574.49	127.12N	286.80W	==>	-104.86	
3700.00	9.72	293.900	3673.05	133.96N	302.24W	==>	-110.51	
3800.00	9.72	293.900	3771.61	140.81N	317.68W	==>	-116.15	
3900.00	9.72	293.900	3870.18	147.65N	333.12W	==>	-121.80	
4000.00	9.72	293.900	3968.74	154.49N	348.56W	==>	-127.44	
4100.00	9.72	293.900	4067.30	161.34N	364.00W	==>	-133.09	
4200.00	9.72	293.900	4165.87	168.18N	379.44W	==>	-138.73	
4300.00	9.72	293.900	4264.43	175.03N	394.88W	==>	-144.38	
4400.00	9.72	293.900	4363.00	181.87N	410.33W	==>	-150.02	
4500.00	9.72	293.900	4461.56	188.71N	425.77W	==>	-155.67	
4600.00	9.72	293.900	4560.12	195.56N	441.21W	==>	-161.32	
4700.00	9.72	293.900	4658.69	202.40N	456.65W	==>	-166.96	
4800.00	9.72	293.900	4757.25	209.24N	472.09W	==>	-172.61	
4900.00	9.72	293.900	4855.81	216.09N	487.53W	==>	-178.25	
5000.00	9.72	293.900	4954.38	222.93N	502.97W	==>	-183.90	
5100.00	9.72	293.900	5052.94	229.77N	518.41W	==>	-189.54	
5200.00	9.72	293.900	5151.50	236.62N	533.85W	==>	-195.19	
5300.00	9.72	293.900	5250.07	243.46N	549.29W	==>	-200.83	
5400.00	9.72	293.900	5348.63	250.31N	564.73W	==>	-206.48	
5500.00	9.72	293.900	5447.19	257.15N	580.17W	==>	-212.12	
5600.00	9.72	293.900	5545.76	263.99N	595.61W	==>	-217.77	
5700.00	9.72	293.900	5644.32	270.84N	611.05W	==>	-223.41	
5800.00	9.72	293.900	5742.88	277.68N	626.49W	==>	-229.06	
5900.00	9.72	293.900	5841.45	284.52N	641.93W	==>	-234.70	
6000.00	9.72	293.900	5940.01	291.37N	657.37W	==>	-240.35	
6100.00	9.72	293.900	6038.57	298.21N	672.81W	==>	-245.99	
6200.00	9.72	293.900	6137.14	305.05N	688.25W	==>	-251.64	
6300.00	9.72	293.900	6235.70	311.90N	703.69W	==>	-257.29	
6400.00	9.72	293.900	6334.27	318.74N	719.13W	==>	-262.93	
6500.00	9.72	293.900	6432.83	325.59N	734.57W	==>	-268.58	
6600.00	9.29	287.040	6531.40	332.30N	750.01W	10.00	-274.09	
6700.00	11.42	230.150	6630.00	328.31N	765.37W	10.00	-268.95	
6800.00	19.31	205.990	6726.45	307.06N	780.25W	10.00	-246.62	
6900.00	28.52	196.230	6817.80	269.18N	794.20W	10.00	-207.79	
7000.00	38.11	191.010	6901.29	215.83N	806.80W	10.00	-153.63	
7100.00	47.85	187.660	6974.37	148.64N	817.66W	10.00	-85.80	
7200.00	57.66	185.210	7034.83	69.63N	826.45W	10.00	-6.36	
7300.00	67.50	183.240	7080.83	18.78S	832.91W	10.00	82.29	
7400.00	77.37	181.540	7110.97	113.92S	836.84W	10.00	177.45	
7500.00	87.25	179.960	7124.33	212.89S	838.12W	10.00	276.23	
7600.00	90.00	179.530	7125.00	312.87S	837.41W	==>	375.87	
7700.00	90.00	179.530	7125.00	412.87S	836.60W	==>	475.51	
7800.00	90.00	179.530	7125.00	512.87S	835.79W	==>	575.15	
7900.00	90.00	179.530	7125.00	612.86S	834.97W	==>	674.80	
8000.00	90.00	179.530	7125.00	712.86S	834.16W	==>	774.44	
8100.00	90.00	179.530	7125.00	812.86S	833.35W	==>	874.08	
8200.00	90.00	179.530	7125.00	912.85S	832.53W	==>	973.73	
8300.00	90.00	179.530	7125.00	1012.85S	831.72W	==>	1073.37	
8400.00	90.00	179.530	7125.00	1112.85S	830.90W	==>	1173.01	
8500.00	90.00	179.530	7125.00	1212.84S	830.09W	==>	1272.66	
8600.00	90.00	179.530	7125.00	1312.84S	829.28W	==>	1372.30	
8700.00	90.00	179.530	7125.00	1412.84S	828.46W	==>	1471.94	
8800.00	90.00	179.530	7125.00	1512.83S	827.65W	==>	1571.58	
8900.00	90.00	179.530	7125.00	1612.83S	826.83W	==>	1671.23	
9000.00	90.00	179.530	7125.00	1712.83S	826.02W	==>	1770.87	
9100.00	90.00	179.530	7125.00	1812.82S	825.21W	==>	1870.51	

All data is in Feet unless otherwise stated
Coordinates are from Slot MD's are from Rig and TVD's are from Rig (Planned Datum #1 4974.0ft above Mean Sea Level)
Vertical Section is from 0.00N 0.00E on azimuth 184.380 degrees
Bottom hole distance is 9948.55 Feet on azimuth 184.38 degrees from Wellhead
Calculation method uses Minimum Curvature method
Prepared by IPT
Date Printed: 15-Jul-2016

Interpolated Wellpath								
MD[ft]	Inc[deg]	Azi[deg]	TVD[ft]	North[ft]	East[ft]	Dogleg [deg/100ft]	Vertical Section[ft]	All Station Comments
9200.00	90.00	179.530	7125.00	1912.82S	824.39W	==>	1970.16	
9300.00	90.00	179.530	7125.00	2012.82S	823.58W	==>	2069.80	
9400.00	90.00	179.530	7125.00	2112.81S	822.77W	==>	2169.44	
9500.00	90.00	179.530	7125.00	2212.81S	821.95W	==>	2269.09	
9600.00	90.00	179.530	7125.00	2312.81S	821.14W	==>	2368.73	
9700.00	90.00	179.530	7125.00	2412.80S	820.32W	==>	2468.37	
9800.00	90.00	179.530	7125.00	2512.80S	819.51W	==>	2568.01	
9900.00	90.00	179.530	7125.00	2612.80S	818.70W	==>	2667.66	
10000.00	90.00	179.530	7125.00	2712.79S	817.88W	==>	2767.30	
10100.00	90.00	179.530	7125.00	2812.79S	817.07W	==>	2866.94	
10200.00	90.00	179.530	7125.00	2912.79S	816.26W	==>	2966.59	
10300.00	90.00	179.530	7125.00	3012.78S	815.44W	==>	3066.23	
10400.00	90.00	179.530	7125.00	3112.78S	814.63W	==>	3165.87	
10500.00	90.00	179.530	7125.00	3212.78S	813.81W	==>	3265.51	
10600.00	90.00	179.530	7125.00	3312.77S	813.00W	==>	3365.16	
10700.00	90.00	179.530	7125.00	3412.77S	812.19W	==>	3464.80	
10800.00	90.00	179.530	7125.00	3512.77S	811.37W	==>	3564.44	
10900.00	90.00	179.530	7125.00	3612.76S	810.56W	==>	3664.09	
11000.00	90.00	179.530	7125.00	3712.76S	809.75W	==>	3763.73	
11100.00	90.00	179.530	7125.00	3812.76S	808.93W	==>	3863.37	
11200.00	90.00	179.530	7125.00	3912.75S	808.12W	==>	3963.02	
11300.00	90.00	179.530	7125.00	4012.75S	807.30W	==>	4062.66	
11400.00	90.00	179.530	7125.00	4112.75S	806.49W	==>	4162.30	
11500.00	90.00	179.530	7125.00	4212.74S	805.68W	==>	4261.94	
11600.00	90.00	179.530	7125.00	4312.74S	804.86W	==>	4361.59	
11700.00	90.00	179.530	7125.00	4412.74S	804.05W	==>	4461.23	
11800.00	90.00	179.530	7125.00	4512.73S	803.24W	==>	4560.87	
11900.00	90.00	179.530	7125.00	4612.73S	802.42W	==>	4660.52	
12000.00	90.00	179.530	7125.00	4712.73S	801.61W	==>	4760.16	
12100.00	90.00	179.530	7125.00	4812.72S	800.79W	==>	4859.80	
12200.00	90.00	179.530	7125.00	4912.72S	799.98W	==>	4959.45	
12300.00	90.00	179.530	7125.00	5012.72S	799.17W	==>	5059.09	
12400.00	90.00	179.530	7125.00	5112.71S	798.35W	==>	5158.73	
12500.00	90.00	179.530	7125.00	5212.71S	797.54W	==>	5258.37	
12600.00	90.00	179.530	7125.00	5312.71S	796.73W	==>	5358.02	
12700.00	90.00	179.530	7125.00	5412.70S	795.91W	==>	5457.66	
12800.00	90.00	179.530	7125.00	5512.70S	795.10W	==>	5557.30	
12900.00	90.00	179.530	7125.00	5612.70S	794.28W	==>	5656.95	
13000.00	90.00	179.530	7125.00	5712.69S	793.47W	==>	5756.59	
13100.00	90.00	179.530	7125.00	5812.69S	792.66W	==>	5856.23	
13200.00	90.00	179.530	7125.00	5912.69S	791.84W	==>	5955.87	
13300.00	90.00	179.530	7125.00	6012.68S	791.03W	==>	6055.52	
13400.00	90.00	179.530	7125.00	6112.68S	790.22W	==>	6155.16	
13500.00	90.00	179.530	7125.00	6212.68S	789.40W	==>	6254.80	
13600.00	90.00	179.530	7125.00	6312.67S	788.59W	==>	6354.45	
13700.00	90.00	179.530	7125.00	6412.67S	787.77W	==>	6454.09	
13800.00	90.00	179.530	7125.00	6512.67S	786.96W	==>	6553.73	
13900.00	90.00	179.530	7125.00	6612.66S	786.15W	==>	6653.38	
14000.00	90.00	179.530	7125.00	6712.66S	785.33W	==>	6753.02	
14100.00	90.00	179.530	7125.00	6812.66S	784.52W	==>	6852.66	
14200.00	90.00	179.530	7125.00	6912.65S	783.70W	==>	6952.30	
14300.00	90.00	179.530	7125.00	7012.65S	782.89W	==>	7051.95	
14400.00	90.00	179.530	7125.00	7112.65S	782.08W	==>	7151.59	
14500.00	90.00	179.530	7125.00	7212.64S	781.26W	==>	7251.23	
14600.00	90.00	179.530	7125.00	7312.64S	780.45W	==>	7350.88	
14700.00	90.00	179.530	7125.00	7412.64S	779.64W	==>	7450.52	
14800.00	90.00	179.530	7125.00	7512.63S	778.82W	==>	7550.16	
14900.00	90.00	179.530	7125.00	7612.63S	778.01W	==>	7649.81	
15000.00	90.00	179.530	7125.00	7712.63S	777.19W	==>	7749.45	

All data is in Feet unless otherwise stated
Coordinates are from Slot MD's are from Rig and TVD's are from Rig (Planned Datum #1 4974.0ft above Mean Sea Level)
Vertical Section is from 0.00N 0.00E on azimuth 184.380 degrees
Bottom hole distance is 9948.55 Feet on azimuth 184.38 degrees from Wellhead
Calculation method uses Minimum Curvature method
Prepared by IPT
Date Printed: 15-Jul-2016



SYSDRILL
Well Design Combined Report
Wellbore: Lehl 30-3 (PWB)



Interpolated Wellpath								
MD[ft]	Inc[deg]	Azi[deg]	TVD[ft]	North[ft]	East[ft]	Dogleg [deg/100ft]	Vertical Section[ft]	All Station Comments
15100.00	90.00	179.530	7125.00	7812.62S	776.38W	==>	7849.09	
15200.00	90.00	179.530	7125.00	7912.62S	775.57W	==>	7948.73	
15300.00	90.00	179.530	7125.00	8012.62S	774.75W	==>	8048.38	
15400.00	90.00	179.530	7125.00	8112.61S	773.94W	==>	8148.02	
15500.00	90.00	179.530	7125.00	8212.61S	773.13W	==>	8247.66	
15600.00	90.00	179.530	7125.00	8312.61S	772.31W	==>	8347.31	
15700.00	90.00	179.530	7125.00	8412.61S	771.50W	==>	8446.95	
15800.00	90.00	179.530	7125.00	8512.60S	770.68W	==>	8546.59	
15900.00	90.00	179.530	7125.00	8612.60S	769.87W	==>	8646.23	
16000.00	90.00	179.530	7125.00	8712.60S	769.06W	==>	8745.88	
16100.00	90.00	179.530	7125.00	8812.59S	768.24W	==>	8845.52	
16200.00	90.00	179.530	7125.00	8912.59S	767.43W	==>	8945.16	
16300.00	90.00	179.530	7125.00	9012.59S	766.62W	==>	9044.81	
16400.00	90.00	179.530	7125.00	9112.58S	765.80W	==>	9144.45	
16500.00	90.00	179.530	7125.00	9212.58S	764.99W	==>	9244.09	
16600.00	90.00	179.530	7125.00	9312.58S	764.17W	==>	9343.74	
16700.00	90.00	179.530	7125.00	9412.57S	763.36W	==>	9443.38	
16800.00	90.00	179.530	7125.00	9512.57S	762.55W	==>	9543.02	
16900.00	90.00	179.530	7125.00	9612.57S	761.73W	==>	9642.66	
17000.00	90.00	179.530	7125.00	9712.56S	760.92W	==>	9742.31	
17100.00	90.00	179.530	7125.00	9812.56S	760.11W	==>	9841.95	
17200.00	90.00	179.530	7125.00	9912.56S	759.29W	==>	9941.59	
17206.98	90.00	179.530	7125.00	9919.54S	759.23W	==>	9948.55	

All data is in Feet unless otherwise stated
Coordinates are from Slot MD's are from Rig and TVD's are from Rig (Planned Datum #1 4974.0ft above Mean Sea Level)
Vertical Section is from 0.00N 0.00E on azimuth 184.380 degrees
Bottom hole distance is 9948.55 Feet on azimuth 184.38 degrees from Wellhead
Calculation method uses Minimum Curvature method
Prepared by IPT
Date Printed: 15-Jul-2016



Targets							
Name	North[ft]	East[ft]	TVD[ft]	Latitude	Longitude	Northing	Easting
LEHL 30-3 BH - Rev 2	9919.54S	759.23W	7125.00	40.00179000	-104.70141000	1244506.27	3223718.96
LEHL 30-3 EP - Rev 2	240.72S	838.00W	7125.00	40.02836000	-104.70138000	1254184.73	3223640.20

Survey Tool Program						
Reference	Survey Name	MD[ft]	TVD[ft]	Survey Tool	Error Model	
505914	Planned	17206.98	7125.00	ISCWSA MWD	Rev 4 + SAG	

Notes



SYSDRILL
Closest Approach + Clearance Factor Summary Report
Wellbore: Lehl 30-3 (PWB)



Ellipse separations are reported ONLY if BOTH wells have uncertainty data
Only Depth and Magnetic Reference Field error terms are correlated across tie points
Scan limit is calculated on CENTRE to CENTRE distance
Summary data uses Closest Approach clearance calculation for all minima
Hole size/Casings ARE included
Hole size/Casings are NOT subtracted from Centre-Centre distance
Confidence limit of 95.00% / 2.80 SD.

Wellbore		
Name	Created	Last Revised
Lehl 30-3 (PWB)	Jun-13-2016	Jul-15-2016

Well		
Name	Government ID	Last Revised
Lehl 30-3		Jun-13-2016

Slot						
Name	Latitude	Longitude	Grid Northing	Grid Easting	North	East
Slot 3	40.02900000	-104.69838000	1254425.4348	3224478.1659	51.01N	5715.44E

Installation						
Name	Installation Position (Latitude)	Installation Position (Longitude)	Easting	Northing	Coord System Name	North Alignment
Lehl Pad - Rev 2 - 2016-07-15	40.02900000	-104.71878983	3218762.9369	1254374.4255	CO83-NF on NORTH AMERICAN DATUM 1983 datum	Grid

Clearance Summary							
Offset WellName	Separation [ft]	MD[ft]	Diverging From[ft]	Ellipse Separation [ft]	Ellipse MD[ft]	Clearance Factor	Clearance MD[ft]
Lehl 30-4	14.47	1533.47	1700.79	-2.57	1900.00	0.86	1837.27
Lehl 30-2	16.77	1509.19	1509.19	-169.04	17206.98	0.66	17206.98
Lehl 30-5	31.02	1533.65	1701.87	14.28	1837.27	1.31	17206.98
Lehl 30-1	33.59	1509.19	1509.19	18.23	1574.80	1.51	17206.98
Lehl 30-8	47.61	1500.00	1500.00				
Lehl 30-6	47.75	1500.07	1702.95	31.06	1837.27	1.97	17206.98
W Sack-Dreyer 1	55.68	14380.15	14380.15	-125.51	14386.48	0.31	14380.15
Lehl 30-7	64.52	1534.01	1704.03	47.82	1837.27	3.46	2034.12
W Adam Ten 1-A	559.31	17021.07	17021.07	314.10	17021.07	2.28	17021.07
W Lutz 1	719.54	13080.58	13080.58	569.47	13106.96	4.76	13156.17
W Dreyer 1	740.87	15706.75	15706.75	527.20	15731.63	3.46	15764.44
MARGUERITE B LEHL #A-1	831.40	8946.36	8946.36	751.05	8973.10	10.01	9137.14
M B LEHL A #1	871.36	9051.67	9051.67	783.33	9071.52	9.59	9251.97
ELLS #XX 19-4D	897.00	6627.30	6627.30	836.07	6627.30	14.67	6692.91
W Adam Ten Ltd 1	1433.73	17206.98	17206.98	1372.53	17206.98	23.43	17206.98
W Lochbuie 2H-31H D165	1438.15	12764.89	12764.89	1230.03	17206.98	6.06	17206.98
W Highland 01N-65W-29-1N	1570.35	17195.20	17195.20	1321.04	17206.98	6.30	17206.98
W Lochbuie 2G-31H D165	1781.95	12946.80	12946.80	1566.97	17206.98	7.28	17206.98

All data is in Feet unless otherwise stated
Coordinates are from Slot MD's are from Rig and TVD's are from Rig (Planned Datum #1 4974.0ft above Mean Sea Level)
Vertical Section is from 0.00N 0.00E on azimuth 184.380 degrees
Prepared by IPT
Date Printed: 15-Jul-2016



SYSDRILL
Closest Approach + Clearance Factor Summary Report
Wellbore: Lehl 30-3 (PWB)



Clearance Summary							
Offset WellName	Separation [ft]	MD[ft]	Diverging From[ft]	Ellipse Separation [ft]	Ellipse MD[ft]	Clearance Factor	Clearance MD[ft]
CHARLES M BROWN GAS UNIT #1	1889.60	1500.00	1500.00	1871.03	1558.40	40.06	6709.32
W Sawyer/Powell 32-4	1966.30	15600.39	15600.00	1755.56	15633.20	9.28	15764.44
W Lochbuie 2F-31H D165	2017.12	14380.07	14380.07	1836.06	14583.33	8.85	17206.98
KILKER #1	2088.33	11362.26	11362.26	1955.53	11400.92	15.45	11679.79
W Dreyer 32-1	2107.96	14331.19	14331.19	1927.99	14370.08	11.61	14550.52
W Sack-Hiett 1	2138.19	16650.26	16650.26	1901.81	16683.07	9.00	16814.30
W Lutz 1A	2139.82	14360.01	14360.01	1958.50	14419.29	11.48	14747.38
W Lochbuie 21-31	2195.63	12848.26	12848.26	2050.74	12910.10	14.48	13353.02
GILMORE #1-30	2303.41	8229.53	8229.53	2235.25	8267.72	28.83	9383.20
W Lochbuie 2E-31H D165	2481.03	12877.30	12877.30	2266.16	17206.98	10.08	17206.98
W Eppinger 1	2569.73	16667.38	16667.38	2332.11	16732.28	10.58	17076.77
DECHANT #1-19	2742.10	6873.36	6873.36	2684.69	6873.36	46.67	7381.89
LEHL #1	3127.72	10721.89	10721.89	3008.86	10810.37	23.36	11893.04

