

Photo# 1:

Overview of Location to NE ; washed, failed area circled.



August 2, 2016

Inspection Photos: Bayswater PA API#103-  
07766



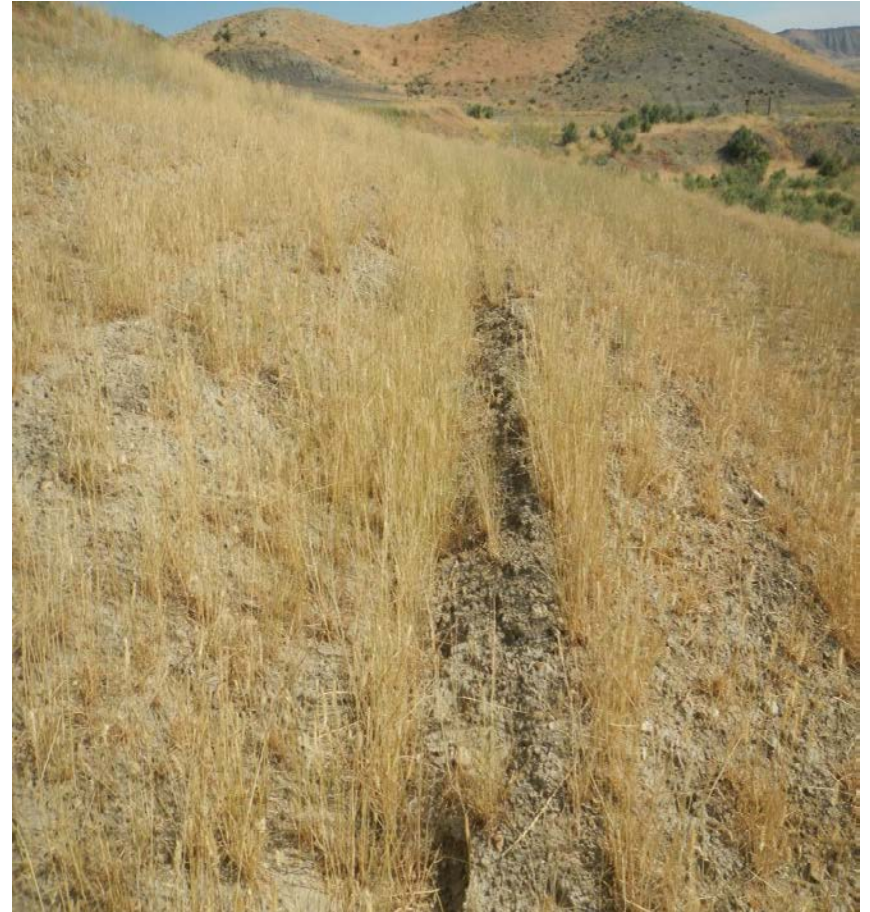
**Photo#2:**

Close up view of Failed area



**Photo#3:**

View of Slope area that is Well stabilized.





Photo#4:

Wattles that run along bottom edge of Location.



Photo#5:

Debris on Location.





Photo# 6:  
View of undisturbed area Vegetation outside of Location .



August 2, 2016

Inspection Photos: Bayswater PA API#103-  
07766