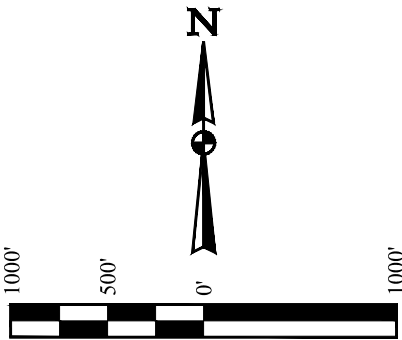
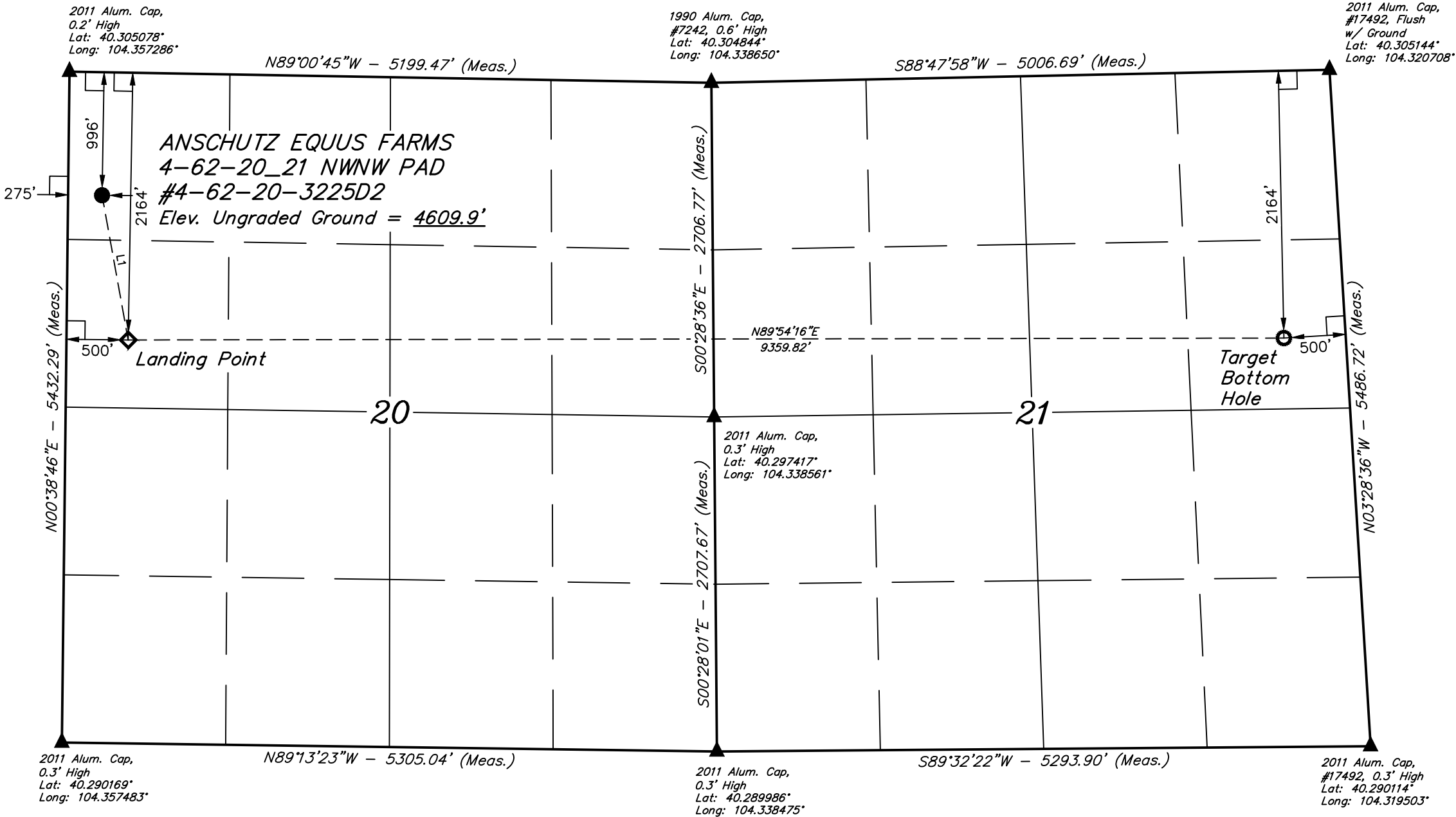


T4N, R62W, 6th P.M.

BILL BARRETT CORPORATION  
ANSCHUTZ EQUUS FARMS 4-62-20\_21 NWNW PAD  
#4-62-20-3225D2  
NW 1/4 NW 1/4, SECTION 20, T4N, R62W, 6th P.M.  
WELD COUNTY, COLORADO  
BASIS OF BEARINGS  
BASIS OF ELEVATION  
BASIS OF BEARINGS IS A G.P.S. OBSERVATION

SPOT ELEVATION LOCATED AT THE NORTHEAST CORNER OF SECTION 24, T5N, R62W, 6th P.M. TAKEN FROM THE POINT OF ROCKS, QUADRANGLE, COLORADO, WELD COUNTY, 7.5 MINUTE QUAD (TOPOGRAPHIC MAP) PUBLISHED BY THE UNITED STATES DEPARTMENT OF THE INTERIOR, GEOLOGICAL SURVEY. SAID ELEVATION IS MARKED AS BEING 4530 FEET.



LINE TABLE		
LINE	DIRECTION	LENGTH
L1	S10°14'54"E	1190.76'

CERTIFICATE  
THIS IS TO CERTIFY THAT THE ABOVE PLAT WAS PREPARED FROM FIELD NOTES OF ACTUAL SURVEYS MADE BY ME OR UNDER MY SUPERVISION, AND THAT THE SAME ARE TRUE AND CORRECT TO THE BEST OF MY KNOWLEDGE AND BELIEF.

REGISTERED LAND SURVEYOR  
REGISTRATION NO. 28285  
STATE OF COLORADO



REV: 5 08-09-16 L.C.S. (LP, BHL & NAME CHANGE)

PDOP = 1.4

LEGEND:

- 90° SYMBOL
- PROPOSED WELLHEAD.
- LANDING POINT.
- TARGET BOTTOM HOLE.
- SECTION CORNERS LOCATED.

NAD 83 (TARGET BOTTOM HOLE)	NAD 83 (LANDING POINT)	NAD 83 (SURFACE LOCATION)
LATITUDE = 40°17'57.05" (40.299181)	LATITUDE = 40°17'56.82" (40.299117)	LATITUDE = 40°18'08.39" (40.302331)
LONGITUDE = 104°19'19.29" (104.322025)	LONGITUDE = 104°21'20.06" (104.355572)	LONGITUDE = 104°21'22.81" (104.356336)
NAD 27 (TARGET BOTTOM HOLE)	NAD 27 (LANDING POINT)	NAD 27 (SURFACE LOCATION)
LATITUDE = 40°17'57.12" (40.299200)	LATITUDE = 40°17'56.89" (40.299136)	LATITUDE = 40°18'08.46" (40.302350)
LONGITUDE = 104°19'17.46" (104.321517)	LONGITUDE = 104°21'18.23" (104.355064)	LONGITUDE = 104°21'20.98" (104.355828)
STATE PLANE NAD 83 (CO. NORTH)	STATE PLANE NAD 83 (CO. NORTH)	STATE PLANE NAD 83 (CO. NORTH)
N: 1354015.25 E: 3328556.45	N: 1353868.99 E: 3319200.23	N: 1355037.37 E: 3318972.09
STATE PLANE NAD 27 (CO. NORTH)	STATE PLANE NAD 27 (CO. NORTH)	STATE PLANE NAD 27 (CO. NORTH)
N: 354017.77 E: 2328706.71	N: 353871.45 E: 2319350.49	N: 355039.80 E: 2319122.34



UELS, LLC  
Corporate Office \* 85 South 200 East  
Vernal, UT 84078 \* (435) 789-1017

SURVEYED BY: DALLAS NIELSEN, B.C.	DATE: 06-15-15
DRAWN BY: J.W.	DATE DRAWN: 10-06-14
SCALE: 1" = 1000'	

WELL LOCATION PLAT