

# **BILL BARRETT CORP**

**WELD COUNTY, COLORADO**

**Anschutz Equus Farms 4-62-20\_21 NWNW Pad**

**Anschutz Equus Farms 4-62-20-3225D2**

**Wellbore #1**

**Plan: Design #1**

## **Standard Planning Report**

**12 August, 2016**



**Bill Barrett Corporation**

## COMPANY DETAILS: BILL BARRETT CORP

Calculation Method: Minimum Curvature  
Error System: ISCWSA  
Scan Method: Closest Approach 3D  
Error Surface: Elliptical Conic  
Warning Method: Error Ratio

## REFERENCE INFORMATION

Co-ordinate (N/E) Reference: Well Anschutz Equus Farms 4-62-20-3225D2, True North  
Vertical (TVD) Reference: KB @ 4619.0ft (Original Well Elev)  
Section (VS) Reference: Slot - (0.0N, 0.0E)  
Measured Depth Reference: KB @ 4619.0ft (Original Well Elev)  
Calculation Method: Minimum Curvature

## WELL DETAILS: Anschutz Equus Farms 4-62-20-3225D2

+N/-S	+E/-W	Northing	Easting	Latitude	Longitude
0.0	0.0	1355037.19	3318972.31	40° 18' 8.391 N	104° 21' 22.810 W

## WELLBORE TARGET DETAILS

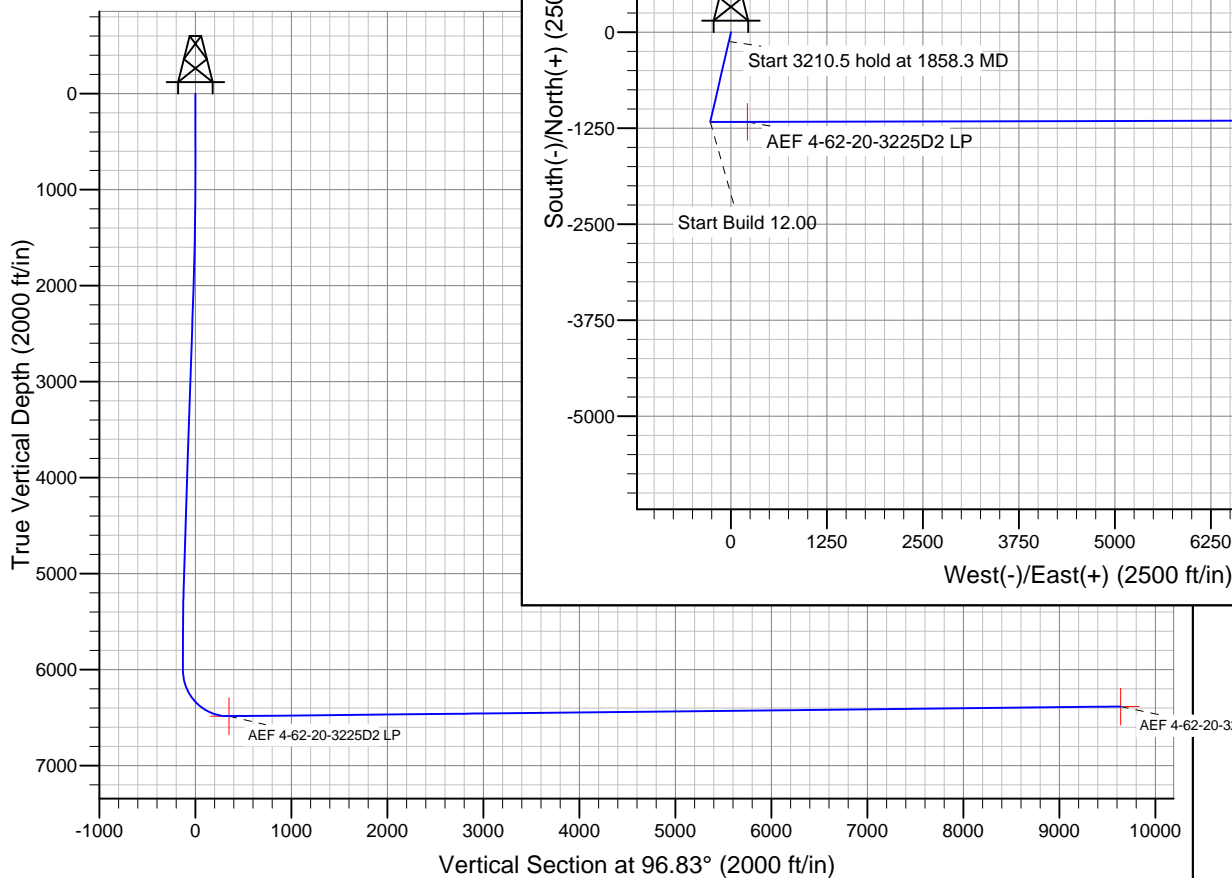
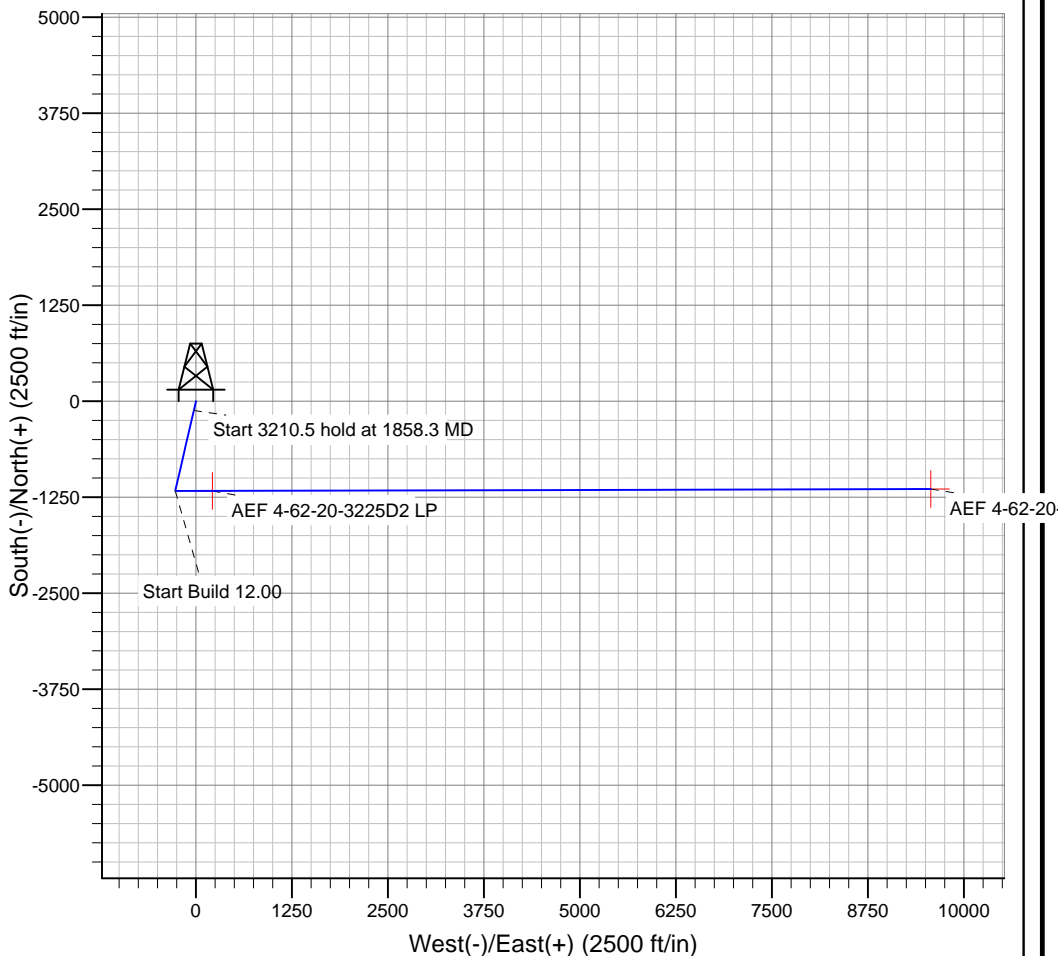
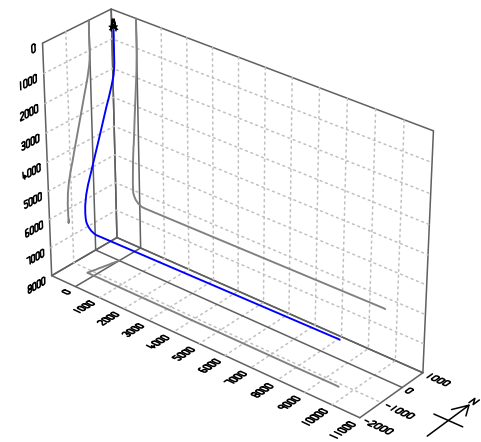
Name	TVD	+N/-S	+E/-W	Shape
AEF 4-62-20-3225D2 PBHL	1145.8	9570.2	Point	Point
AEF 4-62-20-3225D2 LP	-1170.9	213.0	Point	Point

## PROJECT DETAILS: WELD COUNTY, COLORADO

Geodetic System: US State Plane 1983  
Datum: North American Datum 1983  
Ellipsoid: GRS 1980  
Zone: Colorado Northern Zone

## SECTION DETAILS

Sec	MD	Inc	Azi	TVD	+N/-S	+E/-W	DLeg	TFace	VSec	Target
1	0.0	0.00	0.00	0.0	0.0	0.0	0.00	0.00	0.0	
2	1000.0	0.00	0.00	1000.0	0.0	0.0	0.00	0.00	0.0	
3	1858.3	17.17	192.95	1845.5	-124.4	-28.6	2.00	192.95	-13.6	
4	5068.8	17.17	192.95	4913.0	-1047.9	-240.9	0.00	0.00	-114.7	
5	5927.2	0.00	89.85	5758.6	-1172.2	-269.5	2.00	180.00	-128.3	
6	6177.2	0.00	89.85	6008.6	-1172.2	-269.5	0.00	0.00	-128.3	
7	6932.3	90.61	89.85	6486.0	-1170.9	213.0	12.00	0.00	350.7	AEF 4-62-20-3225D2 LP
8	16290.0	90.61	89.85	6385.8	-1145.7	9570.2	0.00	0.00	9638.5	AEF 4-62-20-3225D2 PBHL



Azimuths to True North  
Magnetic North: 8.16°

Magnetic Field  
Strength: 52750.5snT  
Dip Angle: 66.91°  
Date: 12/31/2014  
Model: IGRF2010

# Bill Barrett Corp

## Planning Report

<b>Database:</b>	Compass	<b>Local Co-ordinate Reference:</b>	Well Anschutz Equus Farms 4-62-20-3225D2
<b>Company:</b>	BILL BARRETT CORP	<b>TVD Reference:</b>	KB @ 4619.0ft (Original Well Elev)
<b>Project:</b>	WELD COUNTY, COLORADO	<b>MD Reference:</b>	KB @ 4619.0ft (Original Well Elev)
<b>Site:</b>	Anschutz Equus Farms 4-62-20_21 NWNW Pad	<b>North Reference:</b>	True
<b>Well:</b>	Anschutz Equus Farms 4-62-20-3225D2	<b>Survey Calculation Method:</b>	Minimum Curvature
<b>Wellbore:</b>	Wellbore #1		
<b>Design:</b>	Design #1		

<b>Project</b>	WELD COUNTY, COLORADO		
<b>Map System:</b>	US State Plane 1983	<b>System Datum:</b>	Mean Sea Level
<b>Geo Datum:</b>	North American Datum 1983		
<b>Map Zone:</b>	Colorado Northern Zone		

<b>Site</b>	Anschutz Equus Farms 4-62-20_21 NWNW Pad		
<b>Site Position:</b>		<b>Northing:</b>	1,355,097.67 ft
<b>From:</b>	Lat/Long	<b>Easting:</b>	3,318,971.53 ft
<b>Position Uncertainty:</b>	0.0 ft	<b>Slot Radius:</b>	"
		<b>Latitude:</b>	40° 18' 8.989 N
		<b>Longitude:</b>	104° 21' 22.810 W
		<b>Grid Convergence:</b>	0.74 °

<b>Well</b>	Anschutz Equus Farms 4-62-20-3225D2		
<b>Well Position</b>	<b>+N/-S</b>	-60.5 ft	<b>Northing:</b>
	<b>+E/-W</b>	0.0 ft	<b>Easting:</b>
<b>Position Uncertainty</b>		0.0 ft	<b>Wellhead Elevation:</b>
			<b>Latitude:</b>
			<b>Longitude:</b>
			<b>Ground Level:</b>

<b>Wellbore</b>	Wellbore #1				
<b>Magnetics</b>	<b>Model Name</b>	<b>Sample Date</b>	<b>Declination (°)</b>	<b>Dip Angle (°)</b>	<b>Field Strength (nT)</b>
	IGRF2010	12/31/2014	8.16	66.91	52,751

<b>Design</b>	Design #1			
<b>Audit Notes:</b>				
<b>Version:</b>	<b>Phase:</b>	PLAN	<b>Tie On Depth:</b>	0.0
<b>Vertical Section:</b>	<b>Depth From (TVD) (ft)</b>	<b>+N/-S (ft)</b>	<b>+E/-W (ft)</b>	<b>Direction (°)</b>
	0.0	0.0	0.0	96.83

<b>Plan Sections</b>										
<b>Measured Depth (ft)</b>	<b>Inclination (°)</b>	<b>Azimuth (°)</b>	<b>Vertical Depth (ft)</b>	<b>+N/-S (ft)</b>	<b>+E/-W (ft)</b>	<b>Dogleg Rate (°/100ft)</b>	<b>Build Rate (°/100ft)</b>	<b>Turn Rate (°/100ft)</b>	<b>TFO (°)</b>	<b>Target</b>
0.0	0.00	0.00	0.0	0.0	0.0	0.00	0.00	0.00	0.00	
1,000.0	0.00	0.00	1,000.0	0.0	0.0	0.00	0.00	0.00	0.00	
1,858.3	17.17	192.95	1,845.5	-124.4	-28.6	2.00	2.00	0.00	192.95	
5,068.8	17.17	192.95	4,913.0	-1,047.9	-240.9	0.00	0.00	0.00	0.00	
5,927.2	0.00	89.85	5,758.6	-1,172.2	-269.5	2.00	-2.00	0.00	180.00	
6,177.2	0.00	89.85	6,008.6	-1,172.2	-269.5	0.00	0.00	0.00	0.00	
6,932.3	90.61	89.85	6,486.0	-1,170.9	213.0	12.00	12.00	0.00	0.00	AEF 4-62-20-3225C
16,290.0	90.61	89.85	6,385.8	-1,145.7	9,570.2	0.00	0.00	0.00	0.00	AEF 4-62-20-3225C

# Bill Barrett Corp

## Planning Report

<b>Database:</b>	Compass	<b>Local Co-ordinate Reference:</b>	Well Anschutz Equus Farms 4-62-20-3225D2
<b>Company:</b>	BILL BARRETT CORP	<b>TVD Reference:</b>	KB @ 4619.0ft (Original Well Elev)
<b>Project:</b>	WELD COUNTY, COLORADO	<b>MD Reference:</b>	KB @ 4619.0ft (Original Well Elev)
<b>Site:</b>	Anschutz Equus Farms 4-62-20_21 NWNW Pad	<b>North Reference:</b>	True
<b>Well:</b>	Anschutz Equus Farms 4-62-20-3225D2	<b>Survey Calculation Method:</b>	Minimum Curvature
<b>Wellbore:</b>	Wellbore #1		
<b>Design:</b>	Design #1		

Planned Survey									
Measured Depth (ft)	Inclination (°)	Azimuth (°)	Vertical Depth (ft)	+N/-S (ft)	+E/-W (ft)	Vertical Section (ft)	Dogleg Rate (°/100ft)	Build Rate (°/100ft)	Turn Rate (°/100ft)
0.0	0.00	0.00	0.0	0.0	0.0	0.0	0.00	0.00	0.00
100.0	0.00	0.00	100.0	0.0	0.0	0.0	0.00	0.00	0.00
200.0	0.00	0.00	200.0	0.0	0.0	0.0	0.00	0.00	0.00
300.0	0.00	0.00	300.0	0.0	0.0	0.0	0.00	0.00	0.00
400.0	0.00	0.00	400.0	0.0	0.0	0.0	0.00	0.00	0.00
500.0	0.00	0.00	500.0	0.0	0.0	0.0	0.00	0.00	0.00
600.0	0.00	0.00	600.0	0.0	0.0	0.0	0.00	0.00	0.00
700.0	0.00	0.00	700.0	0.0	0.0	0.0	0.00	0.00	0.00
800.0	0.00	0.00	800.0	0.0	0.0	0.0	0.00	0.00	0.00
900.0	0.00	0.00	900.0	0.0	0.0	0.0	0.00	0.00	0.00
1,000.0	0.00	0.00	1,000.0	0.0	0.0	0.0	0.00	0.00	0.00
1,100.0	2.00	192.95	1,100.0	-1.7	-0.4	-0.2	2.00	2.00	0.00
1,200.0	4.00	192.95	1,199.8	-6.8	-1.6	-0.7	2.00	2.00	0.00
1,300.0	6.00	192.95	1,299.5	-15.3	-3.5	-1.7	2.00	2.00	0.00
1,400.0	8.00	192.95	1,398.7	-27.2	-6.2	-3.0	2.00	2.00	0.00
1,500.0	10.00	192.95	1,497.5	-42.4	-9.8	-4.6	2.00	2.00	0.00
1,600.0	12.00	192.95	1,595.6	-61.0	-14.0	-6.7	2.00	2.00	0.00
1,700.0	14.00	192.95	1,693.1	-82.9	-19.1	-9.1	2.00	2.00	0.00
1,800.0	16.00	192.95	1,789.6	-108.2	-24.9	-11.8	2.00	2.00	0.00
1,858.3	17.17	192.95	1,845.5	-124.4	-28.6	-13.6	2.00	2.00	0.00
1,900.0	17.17	192.95	1,885.4	-136.4	-31.4	-14.9	0.00	0.00	0.00
2,000.0	17.17	192.95	1,980.9	-165.1	-38.0	-18.1	0.00	0.00	0.00
2,100.0	17.17	192.95	2,076.4	-193.9	-44.6	-21.2	0.00	0.00	0.00
2,200.0	17.17	192.95	2,172.0	-222.7	-51.2	-24.4	0.00	0.00	0.00
2,300.0	17.17	192.95	2,267.5	-251.4	-57.8	-27.5	0.00	0.00	0.00
2,400.0	17.17	192.95	2,363.1	-280.2	-64.4	-30.7	0.00	0.00	0.00
2,500.0	17.17	192.95	2,458.6	-309.0	-71.0	-33.8	0.00	0.00	0.00
2,600.0	17.17	192.95	2,554.2	-337.7	-77.7	-37.0	0.00	0.00	0.00
2,700.0	17.17	192.95	2,649.7	-366.5	-84.3	-40.1	0.00	0.00	0.00
2,800.0	17.17	192.95	2,745.3	-395.2	-90.9	-43.3	0.00	0.00	0.00
2,900.0	17.17	192.95	2,840.8	-424.0	-97.5	-46.4	0.00	0.00	0.00
3,000.0	17.17	192.95	2,936.4	-452.8	-104.1	-49.6	0.00	0.00	0.00
3,100.0	17.17	192.95	3,031.9	-481.5	-110.7	-52.7	0.00	0.00	0.00
3,200.0	17.17	192.95	3,127.4	-510.3	-117.3	-55.8	0.00	0.00	0.00
3,300.0	17.17	192.95	3,223.0	-539.1	-124.0	-59.0	0.00	0.00	0.00
3,400.0	17.17	192.95	3,318.5	-567.8	-130.6	-62.1	0.00	0.00	0.00
3,500.0	17.17	192.95	3,414.1	-596.6	-137.2	-65.3	0.00	0.00	0.00
3,600.0	17.17	192.95	3,509.6	-625.4	-143.8	-68.4	0.00	0.00	0.00
3,700.0	17.17	192.95	3,605.2	-654.1	-150.4	-71.6	0.00	0.00	0.00
3,800.0	17.17	192.95	3,700.7	-682.9	-157.0	-74.7	0.00	0.00	0.00
3,900.0	17.17	192.95	3,796.3	-711.7	-163.6	-77.9	0.00	0.00	0.00
4,000.0	17.17	192.95	3,891.8	-740.4	-170.2	-81.0	0.00	0.00	0.00
4,100.0	17.17	192.95	3,987.4	-769.2	-176.9	-84.2	0.00	0.00	0.00
4,200.0	17.17	192.95	4,082.9	-797.9	-183.5	-87.3	0.00	0.00	0.00
4,300.0	17.17	192.95	4,178.4	-826.7	-190.1	-90.5	0.00	0.00	0.00
4,400.0	17.17	192.95	4,274.0	-855.5	-196.7	-93.6	0.00	0.00	0.00
4,500.0	17.17	192.95	4,369.5	-884.2	-203.3	-96.8	0.00	0.00	0.00
4,600.0	17.17	192.95	4,465.1	-913.0	-209.9	-99.9	0.00	0.00	0.00
4,700.0	17.17	192.95	4,560.6	-941.8	-216.5	-103.1	0.00	0.00	0.00
4,800.0	17.17	192.95	4,656.2	-970.5	-223.2	-106.2	0.00	0.00	0.00
4,900.0	17.17	192.95	4,751.7	-999.3	-229.8	-109.4	0.00	0.00	0.00
5,000.0	17.17	192.95	4,847.3	-1,028.1	-236.4	-112.5	0.00	0.00	0.00
5,068.8	17.17	192.95	4,913.0	-1,047.9	-240.9	-114.7	0.00	0.00	0.00

# Bill Barrett Corp

## Planning Report

<b>Database:</b>	Compass	<b>Local Co-ordinate Reference:</b>	Well Anschutz Equus Farms 4-62-20-3225D2
<b>Company:</b>	BILL BARRETT CORP	<b>TVD Reference:</b>	KB @ 4619.0ft (Original Well Elev)
<b>Project:</b>	WELD COUNTY, COLORADO	<b>MD Reference:</b>	KB @ 4619.0ft (Original Well Elev)
<b>Site:</b>	Anschutz Equus Farms 4-62-20_21 NWNW Pad	<b>North Reference:</b>	True
<b>Well:</b>	Anschutz Equus Farms 4-62-20-3225D2	<b>Survey Calculation Method:</b>	Minimum Curvature
<b>Wellbore:</b>	Wellbore #1		
<b>Design:</b>	Design #1		

### Planned Survey

Measured Depth (ft)	Inclination (°)	Azimuth (°)	Vertical Depth (ft)	+N/-S (ft)	+E/-W (ft)	Vertical Section (ft)	Dogleg Rate (°/100ft)	Build Rate (°/100ft)	Turn Rate (°/100ft)
5,100.0	16.54	192.95	4,942.9	-1,056.7	-243.0	-115.6	2.00	-2.00	0.00
5,200.0	14.54	192.95	5,039.2	-1,082.8	-249.0	-118.5	2.00	-2.00	0.00
5,300.0	12.54	192.95	5,136.4	-1,105.6	-254.2	-121.0	2.00	-2.00	0.00
5,400.0	10.54	192.95	5,234.4	-1,125.1	-258.7	-123.1	2.00	-2.00	0.00
5,500.0	8.54	192.95	5,333.0	-1,141.3	-262.4	-124.9	2.00	-2.00	0.00
5,600.0	6.54	192.95	5,432.1	-1,154.0	-265.4	-126.3	2.00	-2.00	0.00
5,700.0	4.54	192.95	5,531.6	-1,163.5	-267.5	-127.3	2.00	-2.00	0.00
5,800.0	2.54	192.95	5,631.4	-1,169.5	-268.9	-128.0	2.00	-2.00	0.00
5,900.0	0.54	192.95	5,731.4	-1,172.1	-269.5	-128.3	2.00	-2.00	0.00
5,927.2	0.00	89.85	5,758.6	-1,172.2	-269.5	-128.3	2.00	-2.00	0.00
6,000.0	0.00	89.85	5,831.4	-1,172.2	-269.5	-128.3	0.00	0.00	0.00
6,100.0	0.00	89.85	5,931.4	-1,172.2	-269.5	-128.3	0.00	0.00	0.00
6,177.2	0.00	89.85	6,008.6	-1,172.2	-269.5	-128.3	0.00	0.00	0.00
6,200.0	2.74	89.85	6,031.4	-1,172.2	-269.0	-127.7	12.00	12.00	0.00
6,300.0	14.74	89.85	6,130.1	-1,172.2	-253.8	-112.7	12.00	12.00	0.00
6,400.0	26.74	89.85	6,223.4	-1,172.1	-218.5	-77.6	12.00	12.00	0.00
6,500.0	38.74	89.85	6,307.4	-1,172.0	-164.5	-24.0	12.00	12.00	0.00
6,600.0	50.74	89.85	6,378.3	-1,171.8	-94.2	45.7	12.00	12.00	0.00
6,700.0	62.74	89.85	6,433.0	-1,171.5	-10.8	128.6	12.00	12.00	0.00
6,800.0	74.74	89.85	6,469.2	-1,171.3	82.3	220.9	12.00	12.00	0.00
6,900.0	86.74	89.85	6,485.3	-1,171.0	180.8	318.7	12.00	12.00	0.00
6,932.3	90.61	89.85	6,486.0	-1,170.9	213.0	350.7	12.00	12.00	0.00
<b>AEF 4-62-20-3225D2 LP</b>									
7,000.0	90.61	89.85	6,485.3	-1,170.8	280.8	417.9	0.00	0.00	0.00
7,100.0	90.61	89.85	6,484.2	-1,170.5	380.8	517.2	0.00	0.00	0.00
7,200.0	90.61	89.85	6,483.1	-1,170.2	480.8	616.4	0.00	0.00	0.00
7,300.0	90.61	89.85	6,482.1	-1,169.9	580.7	715.7	0.00	0.00	0.00
7,400.0	90.61	89.85	6,481.0	-1,169.7	680.7	814.9	0.00	0.00	0.00
7,500.0	90.61	89.85	6,479.9	-1,169.4	780.7	914.2	0.00	0.00	0.00
7,600.0	90.61	89.85	6,478.8	-1,169.1	880.7	1,013.5	0.00	0.00	0.00
7,700.0	90.61	89.85	6,477.8	-1,168.9	980.7	1,112.7	0.00	0.00	0.00
7,800.0	90.61	89.85	6,476.7	-1,168.6	1,080.7	1,212.0	0.00	0.00	0.00
7,900.0	90.61	89.85	6,475.6	-1,168.3	1,180.7	1,311.2	0.00	0.00	0.00
8,000.0	90.61	89.85	6,474.6	-1,168.1	1,280.7	1,410.5	0.00	0.00	0.00
8,100.0	90.61	89.85	6,473.5	-1,167.8	1,380.7	1,509.7	0.00	0.00	0.00
8,200.0	90.61	89.85	6,472.4	-1,167.5	1,480.7	1,609.0	0.00	0.00	0.00
8,300.0	90.61	89.85	6,471.3	-1,167.2	1,580.7	1,708.2	0.00	0.00	0.00
8,400.0	90.61	89.85	6,470.3	-1,167.0	1,680.7	1,807.5	0.00	0.00	0.00
8,500.0	90.61	89.85	6,469.2	-1,166.7	1,780.7	1,906.7	0.00	0.00	0.00
8,600.0	90.61	89.85	6,468.1	-1,166.4	1,880.7	2,006.0	0.00	0.00	0.00
8,700.0	90.61	89.85	6,467.1	-1,166.2	1,980.7	2,105.2	0.00	0.00	0.00
8,800.0	90.61	89.85	6,466.0	-1,165.9	2,080.7	2,204.5	0.00	0.00	0.00
8,900.0	90.61	89.85	6,464.9	-1,165.6	2,180.6	2,303.7	0.00	0.00	0.00
9,000.0	90.61	89.85	6,463.9	-1,165.4	2,280.6	2,403.0	0.00	0.00	0.00
9,100.0	90.61	89.85	6,462.8	-1,165.1	2,380.6	2,502.2	0.00	0.00	0.00
9,200.0	90.61	89.85	6,461.7	-1,164.8	2,480.6	2,601.5	0.00	0.00	0.00
9,300.0	90.61	89.85	6,460.6	-1,164.6	2,580.6	2,700.8	0.00	0.00	0.00
9,400.0	90.61	89.85	6,459.6	-1,164.3	2,680.6	2,800.0	0.00	0.00	0.00
9,500.0	90.61	89.85	6,458.5	-1,164.0	2,780.6	2,899.3	0.00	0.00	0.00
9,600.0	90.61	89.85	6,457.4	-1,163.7	2,880.6	2,998.5	0.00	0.00	0.00
9,700.0	90.61	89.85	6,456.4	-1,163.5	2,980.6	3,097.8	0.00	0.00	0.00
9,800.0	90.61	89.85	6,455.3	-1,163.2	3,080.6	3,197.0	0.00	0.00	0.00
9,900.0	90.61	89.85	6,454.2	-1,162.9	3,180.6	3,296.3	0.00	0.00	0.00

# Bill Barrett Corp

## Planning Report

<b>Database:</b>	Compass	<b>Local Co-ordinate Reference:</b>	Well Anschutz Equus Farms 4-62-20-3225D2
<b>Company:</b>	BILL BARRETT CORP	<b>TVD Reference:</b>	KB @ 4619.0ft (Original Well Elev)
<b>Project:</b>	WELD COUNTY, COLORADO	<b>MD Reference:</b>	KB @ 4619.0ft (Original Well Elev)
<b>Site:</b>	Anschutz Equus Farms 4-62-20_21 NWNW Pad	<b>North Reference:</b>	True
<b>Well:</b>	Anschutz Equus Farms 4-62-20-3225D2	<b>Survey Calculation Method:</b>	Minimum Curvature
<b>Wellbore:</b>	Wellbore #1		
<b>Design:</b>	Design #1		

Planned Survey									
Measured Depth (ft)	Inclination (°)	Azimuth (°)	Vertical Depth (ft)	+N/-S (ft)	+E/-W (ft)	Vertical Section (ft)	Dogleg Rate (°/100ft)	Build Rate (°/100ft)	Turn Rate (°/100ft)
10,000.0	90.61	89.85	6,453.1	-1,162.7	3,280.6	3,395.5	0.00	0.00	0.00
10,100.0	90.61	89.85	6,452.1	-1,162.4	3,380.6	3,494.8	0.00	0.00	0.00
10,200.0	90.61	89.85	6,451.0	-1,162.1	3,480.6	3,594.0	0.00	0.00	0.00
10,300.0	90.61	89.85	6,449.9	-1,161.9	3,580.6	3,693.3	0.00	0.00	0.00
10,400.0	90.61	89.85	6,448.9	-1,161.6	3,680.6	3,792.5	0.00	0.00	0.00
10,500.0	90.61	89.85	6,447.8	-1,161.3	3,780.5	3,891.8	0.00	0.00	0.00
10,600.0	90.61	89.85	6,446.7	-1,161.0	3,880.5	3,991.0	0.00	0.00	0.00
10,700.0	90.61	89.85	6,445.6	-1,160.8	3,980.5	4,090.3	0.00	0.00	0.00
10,800.0	90.61	89.85	6,444.6	-1,160.5	4,080.5	4,189.5	0.00	0.00	0.00
10,900.0	90.61	89.85	6,443.5	-1,160.2	4,180.5	4,288.8	0.00	0.00	0.00
11,000.0	90.61	89.85	6,442.4	-1,160.0	4,280.5	4,388.1	0.00	0.00	0.00
11,100.0	90.61	89.85	6,441.4	-1,159.7	4,380.5	4,487.3	0.00	0.00	0.00
11,200.0	90.61	89.85	6,440.3	-1,159.4	4,480.5	4,586.6	0.00	0.00	0.00
11,300.0	90.61	89.85	6,439.2	-1,159.2	4,580.5	4,685.8	0.00	0.00	0.00
11,400.0	90.61	89.85	6,438.1	-1,158.9	4,680.5	4,785.1	0.00	0.00	0.00
11,500.0	90.61	89.85	6,437.1	-1,158.6	4,780.5	4,884.3	0.00	0.00	0.00
11,600.0	90.61	89.85	6,436.0	-1,158.4	4,880.5	4,983.6	0.00	0.00	0.00
11,700.0	90.61	89.85	6,434.9	-1,158.1	4,980.5	5,082.8	0.00	0.00	0.00
11,800.0	90.61	89.85	6,433.9	-1,157.8	5,080.5	5,182.1	0.00	0.00	0.00
11,900.0	90.61	89.85	6,432.8	-1,157.5	5,180.5	5,281.3	0.00	0.00	0.00
12,000.0	90.61	89.85	6,431.7	-1,157.3	5,280.5	5,380.6	0.00	0.00	0.00
12,100.0	90.61	89.85	6,430.6	-1,157.0	5,380.5	5,479.8	0.00	0.00	0.00
12,200.0	90.61	89.85	6,429.6	-1,156.7	5,480.4	5,579.1	0.00	0.00	0.00
12,300.0	90.61	89.85	6,428.5	-1,156.5	5,580.4	5,678.3	0.00	0.00	0.00
12,400.0	90.61	89.85	6,427.4	-1,156.2	5,680.4	5,777.6	0.00	0.00	0.00
12,500.0	90.61	89.85	6,426.4	-1,155.9	5,780.4	5,876.8	0.00	0.00	0.00
12,600.0	90.61	89.85	6,425.3	-1,155.7	5,880.4	5,976.1	0.00	0.00	0.00
12,700.0	90.61	89.85	6,424.2	-1,155.4	5,980.4	6,075.4	0.00	0.00	0.00
12,800.0	90.61	89.85	6,423.1	-1,155.1	6,080.4	6,174.6	0.00	0.00	0.00
12,900.0	90.61	89.85	6,422.1	-1,154.9	6,180.4	6,273.9	0.00	0.00	0.00
13,000.0	90.61	89.85	6,421.0	-1,154.6	6,280.4	6,373.1	0.00	0.00	0.00
13,100.0	90.61	89.85	6,419.9	-1,154.3	6,380.4	6,472.4	0.00	0.00	0.00
13,200.0	90.61	89.85	6,418.9	-1,154.0	6,480.4	6,571.6	0.00	0.00	0.00
13,300.0	90.61	89.85	6,417.8	-1,153.8	6,580.4	6,670.9	0.00	0.00	0.00
13,400.0	90.61	89.85	6,416.7	-1,153.5	6,680.4	6,770.1	0.00	0.00	0.00
13,500.0	90.61	89.85	6,415.7	-1,153.2	6,780.4	6,869.4	0.00	0.00	0.00
13,600.0	90.61	89.85	6,414.6	-1,153.0	6,880.4	6,968.6	0.00	0.00	0.00
13,700.0	90.61	89.85	6,413.5	-1,152.7	6,980.4	7,067.9	0.00	0.00	0.00
13,800.0	90.61	89.85	6,412.4	-1,152.4	7,080.3	7,167.1	0.00	0.00	0.00
13,900.0	90.61	89.85	6,411.4	-1,152.2	7,180.3	7,266.4	0.00	0.00	0.00
14,000.0	90.61	89.85	6,410.3	-1,151.9	7,280.3	7,365.6	0.00	0.00	0.00
14,100.0	90.61	89.85	6,409.2	-1,151.6	7,380.3	7,464.9	0.00	0.00	0.00
14,200.0	90.61	89.85	6,408.2	-1,151.3	7,480.3	7,564.1	0.00	0.00	0.00
14,300.0	90.61	89.85	6,407.1	-1,151.1	7,580.3	7,663.4	0.00	0.00	0.00
14,400.0	90.61	89.85	6,406.0	-1,150.8	7,680.3	7,762.7	0.00	0.00	0.00
14,500.0	90.61	89.85	6,404.9	-1,150.5	7,780.3	7,861.9	0.00	0.00	0.00
14,600.0	90.61	89.85	6,403.9	-1,150.3	7,880.3	7,961.2	0.00	0.00	0.00
14,700.0	90.61	89.85	6,402.8	-1,150.0	7,980.3	8,060.4	0.00	0.00	0.00
14,800.0	90.61	89.85	6,401.7	-1,149.7	8,080.3	8,159.7	0.00	0.00	0.00
14,900.0	90.61	89.85	6,400.7	-1,149.5	8,180.3	8,258.9	0.00	0.00	0.00
15,000.0	90.61	89.85	6,399.6	-1,149.2	8,280.3	8,358.2	0.00	0.00	0.00
15,100.0	90.61	89.85	6,398.5	-1,148.9	8,380.3	8,457.4	0.00	0.00	0.00
15,200.0	90.61	89.85	6,397.4	-1,148.7	8,480.3	8,556.7	0.00	0.00	0.00

# Bill Barrett Corp

## Planning Report

<b>Database:</b>	Compass	<b>Local Co-ordinate Reference:</b>	Well Anschutz Equus Farms 4-62-20-3225D2
<b>Company:</b>	BILL BARRETT CORP	<b>TVD Reference:</b>	KB @ 4619.0ft (Original Well Elev)
<b>Project:</b>	WELD COUNTY, COLORADO	<b>MD Reference:</b>	KB @ 4619.0ft (Original Well Elev)
<b>Site:</b>	Anschutz Equus Farms 4-62-20_21 NWNW Pad	<b>North Reference:</b>	True
<b>Well:</b>	Anschutz Equus Farms 4-62-20-3225D2	<b>Survey Calculation Method:</b>	Minimum Curvature
<b>Wellbore:</b>	Wellbore #1		
<b>Design:</b>	Design #1		

### Planned Survey

Measured Depth (ft)	Inclination (°)	Azimuth (°)	Vertical Depth (ft)	+N/-S (ft)	+E/-W (ft)	Vertical Section (ft)	Dogleg Rate (°/100ft)	Build Rate (°/100ft)	Turn Rate (°/100ft)
15,300.0	90.61	89.85	6,396.4	-1,148.4	8,580.3	8,655.9	0.00	0.00	0.00
15,400.0	90.61	89.85	6,395.3	-1,148.1	8,680.3	8,755.2	0.00	0.00	0.00
15,500.0	90.61	89.85	6,394.2	-1,147.8	8,780.2	8,854.4	0.00	0.00	0.00
15,600.0	90.61	89.85	6,393.2	-1,147.6	8,880.2	8,953.7	0.00	0.00	0.00
15,700.0	90.61	89.85	6,392.1	-1,147.3	8,980.2	9,052.9	0.00	0.00	0.00
15,800.0	90.61	89.85	6,391.0	-1,147.0	9,080.2	9,152.2	0.00	0.00	0.00
15,900.0	90.61	89.85	6,389.9	-1,146.8	9,180.2	9,251.4	0.00	0.00	0.00
16,000.0	90.61	89.85	6,388.9	-1,146.5	9,280.2	9,350.7	0.00	0.00	0.00
16,100.0	90.61	89.85	6,387.8	-1,146.2	9,380.2	9,450.0	0.00	0.00	0.00
16,200.0	90.61	89.85	6,386.7	-1,146.0	9,480.2	9,549.2	0.00	0.00	0.00
16,290.0	90.61	89.85	6,385.8	-1,145.7	9,570.2	9,638.5	0.00	0.00	0.00
AEF 4-62-20-3225D2 PBHL									