

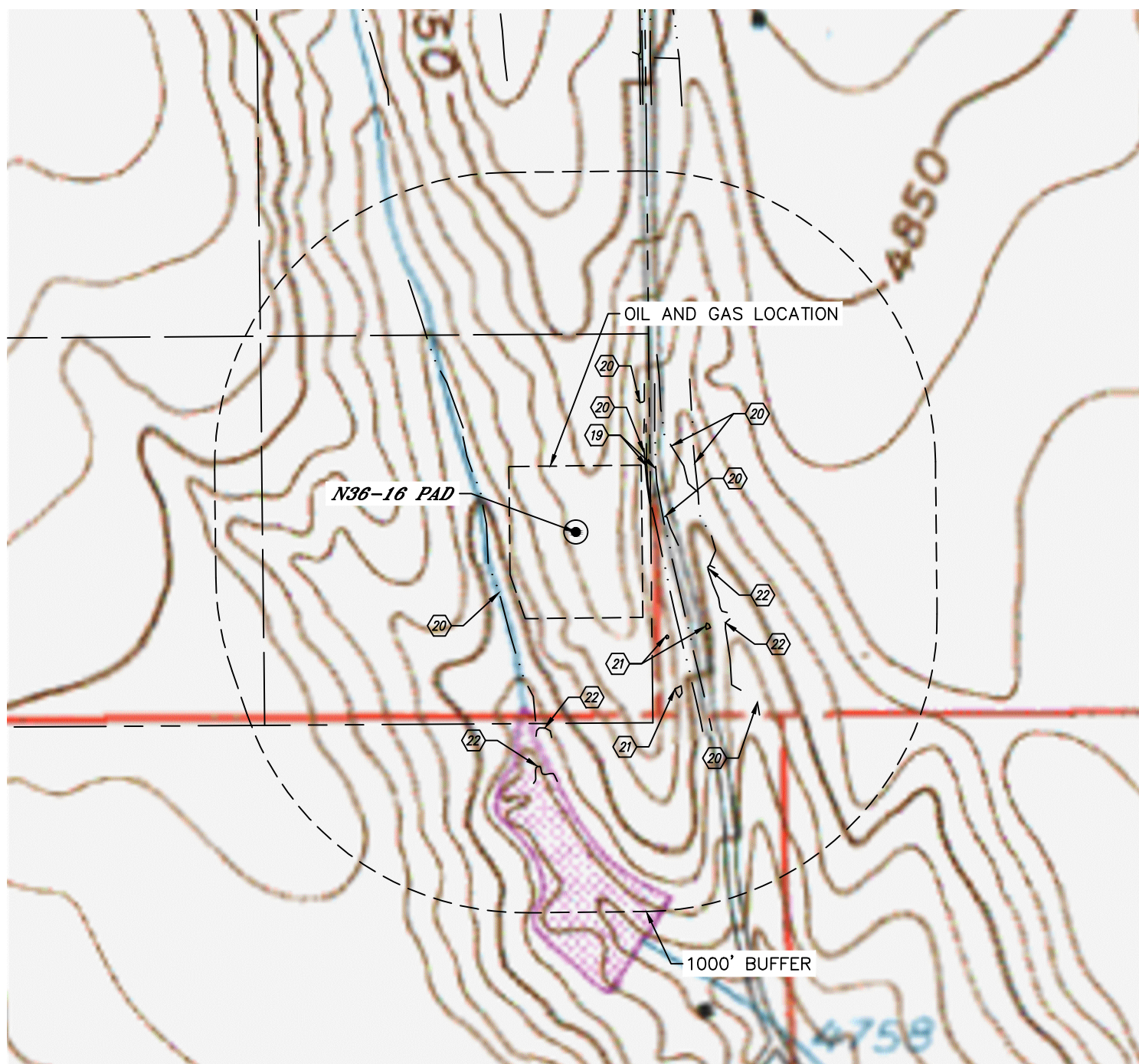


Lat40°, Inc. 6250 W. 10th Street, Unit 2, Greeley, CO 970-515-5294

HYDROLOGY MAP

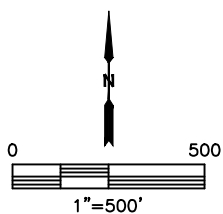
N36-16 PAD

SECTION: 36
TOWNSHIP: 5N
RANGE: 67W
6TH. P.M.
WELD COUNTY, CO



DISTANCES MEASURED FROM THE EDGE OF THE OIL AND GAS LOCATION.

- 19 BORROW DITCH 19' & 48' E
- 20 DITCH 13', 48' & 182' E, 55' SW, 121' NE, 213' N, 484' SE
- 21 LOW AREA 102', 216' & 266' SE
- 22 POND 223' E, 281' SE, 373' & 503' S



DATE: 5/4/2016
PROJECT#: 2016030